

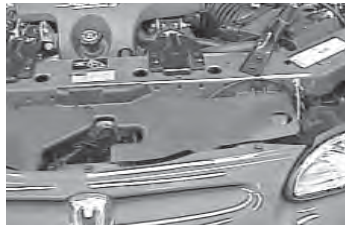


Installation Instructions BX1641

Serial No.

Monte Carlo SS 2000-03

The front bumper and headlights are removed for baseplate installation. The lower plastic rock guard is temporarily removed from the front only. Holes need to be drilled. The attachment tabs are center at 22 inches. If customer is using a car mounted tow bar it will be necessary to use either a BX88133 or a BX88135.



1. Open the hood and remove the plastic push pins from the top of the bumper fascia. Remove the push pins from the plastic cover for the hood latch. Set cover aside.

4. Remove the 7mm screws from the bumper fascia/ fender well molding forward of the front tires. The two lower rivets need to be drilled out



2. Remove the headlights by pulling out the two white clips from the back of the headlight assemblies.

5. Slightly pull the fender well molding out and remove the 11mm bolts fastening the bumper fascia to the fenders.



3. Once the headlights are removed, remove the 11mm screws fastening the bumper fascia to the fenders.

6. Remove the 7mm screws from the bottom of the bumper fascia. The fascia can be removed from the vehicle.

7. Remove the push pins holding the center grill, it will be trimmed later once baseplate is installed.

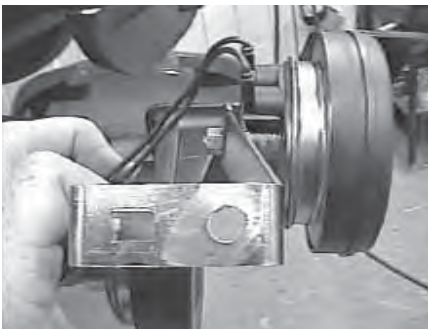
Automatic



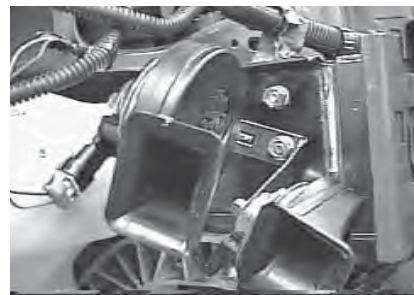
8. Remove the push pins from the foam piece fastened to the metal bumper



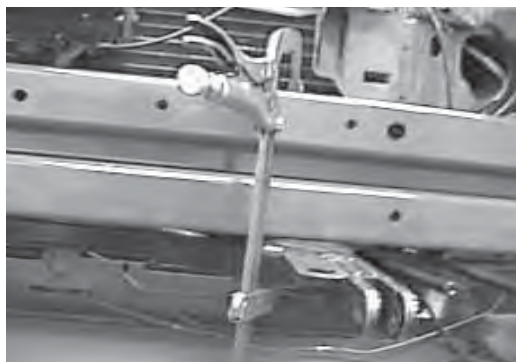
11. Drill the two 3/8" holes for each side plate, use baseplate as a template. Place spacer plates between the sideplates and frame and use hardware as shown in the diagram on last page. NOTE: The fluid reservoir bolts may need to be removed to insert the spacer for the passenger side.



9. Remove the horn from the passenger side frame. Drill the holes to 3/8" diameter.



12. Use the 3/8" Whiz nut and fasten the horn to the lower bolt on the side plate.



10. Place the baseplate up to the vehicle so the front holes in the brace are centered to the bottom of the metal bumper and the side plates are on the outside of the frame. Clamp the baseplate to the bumper.



13. Insert the boltplates through the holes on the bottom of each frame.



13. Drill out the hole of the horn bracket to 3/8" and mount horn to the lower side plate hole.



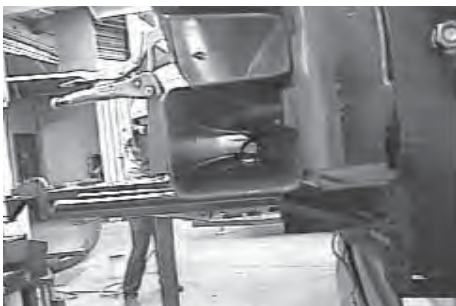
16. Hold the center grill support up to its original position, mark and trim. See above picture.



14. Drill the 1/2" holes under the metal bumper. Use the holes in the brace as a template. Use the 1/2" hardware as shown in the drawing.



17. Hold the bumper facia up to original position. Mark and trim to allow the attachment tabs to extend through. Replace the bumper facia and headlights.



15. The bolt plates with wire can be inserted through the ends of the metal bumper. Tighten bolts.



Tools Required

8mm Wrench
3/4" Wrench

Loctite
C-Clamp Vise Grip

1/4" Drill Bit
Utility Knife

9/16" Wrench
Plastic Pop Rivet Gun

Parts List

Ref. No.	Qty.	Part No.	Description
1	1	61-5532	Weldment, Base Plate, BX1641
2	4	61-5941	Weldment 3/8 Bolt Plate, 14 In Wire
3	2	61-5509	Weldment, 1/2 Bolt Plate, w/Wire
4	2	102-6037	Spacer Plate, BX1641
5	3	203-0010	3/8 Lock Washer, ZP
6	3	202-0003	3/8-16 Hex Nut, ZP
7	1	202-0071	Nut, Hex Flng Whiz Lock, ZP
8	2	203-0012	1/2 Lock Washer, ZP
9	2	202-0005	1/2-13 Hex Nut, ZP
10	2	201-0553	1/4-20 x 1/2 HX. WSHD. Type F, TCS
11	2	101-5822	Adapter, 4 Way Connector
12	2	202-0047	#10-32 Hex Nut
13	2	203-0054	#10 Lock Washer
14	2	201-0192	#10-32 x 1/2 Slot, RD. HD. Screw
	2	226-0046	Baseplate Safety Cable, 36" CL III (Not Shown)
	2	229-0359	Quicklink, 3/8, ZP (Not Shown)
	4	229-0536	6.3MM, Plastic Rivets, (Not Shown)

