



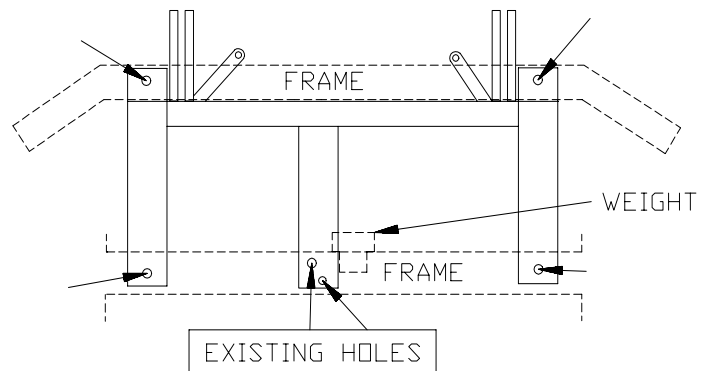
BX1928 Installation Instructions 1995-98 Dodge Stratus

Utilization of Blue Ox baseplates with any tow bar not approved by Automatic Equipment Mfg. Co. invalidates the limited warranty.

Installation of this baseplate requires removing the front bumper. Holes will be drilled in the vehicle's frame and the bumper molding will need to be cut.

1. Read the General Instruction Sheet included with this baseplate.
2. The front bumper needs to be removed to attach the baseplate to the metal cross frame and the lower cross frame. First unscrew the bottom rivets, if the screws of the rivet do not come out, use a narrow screwdriver and hammer to pop out the screw and the rivet. Remove the bolts in front of the front tires using a 10mm socket. There are three plastic rivets on the top of the bumper, use a flathead screwdriver to remove these. Now the bumper is ready to slide out.

DRILL HOLE
WHERE ARROWS POINT



3. On the right side of the radiator there is a bracket that fastens the power steering hoses to the frame of the car. With the baseplate package is an extension bracket (Item 7) and 1/4" bolt, washer and nut to lower the power steering hoses. The hoses need to be lowered so that the baseplate can fit.
4. The baseplate can now be bolted to the metal bumper. Find the cast iron weight bolted to the center of the frame, remove the two bolts that are beside the weight. With an assistant, hold the baseplate to the metal bumper. The center bracket of the baseplate needs to be aligned with the holes beside the weight. Bolt the center bracket to the frame of the car. This will position the baseplate so that holes can be marked and drilled. Use a 17/32" bit for the holes. With the holes drilled, the baseplate can be completely fastened to the car. Loosen the center bracket bolts so that the short wire nuts can be fit through existing holes of the frame for the outside brackets of the baseplate. Use Loctite Blue with every bolt and tighten all nuts.
5. The bumper and molding can now be replaced. Because of the braces of the baseplate extending out to the frame, the molding will need to be cut so that it can be bolted on again.
6. Install the tow bar and safety cables according to the instructions included in their packages.
7. Do not substitute other devices if the tow bar pin and clip are lost.
8. **DEALER OR INSTALLER: BE SURE OWNER RECEIVES THE INSTRUCTION SHEET.**

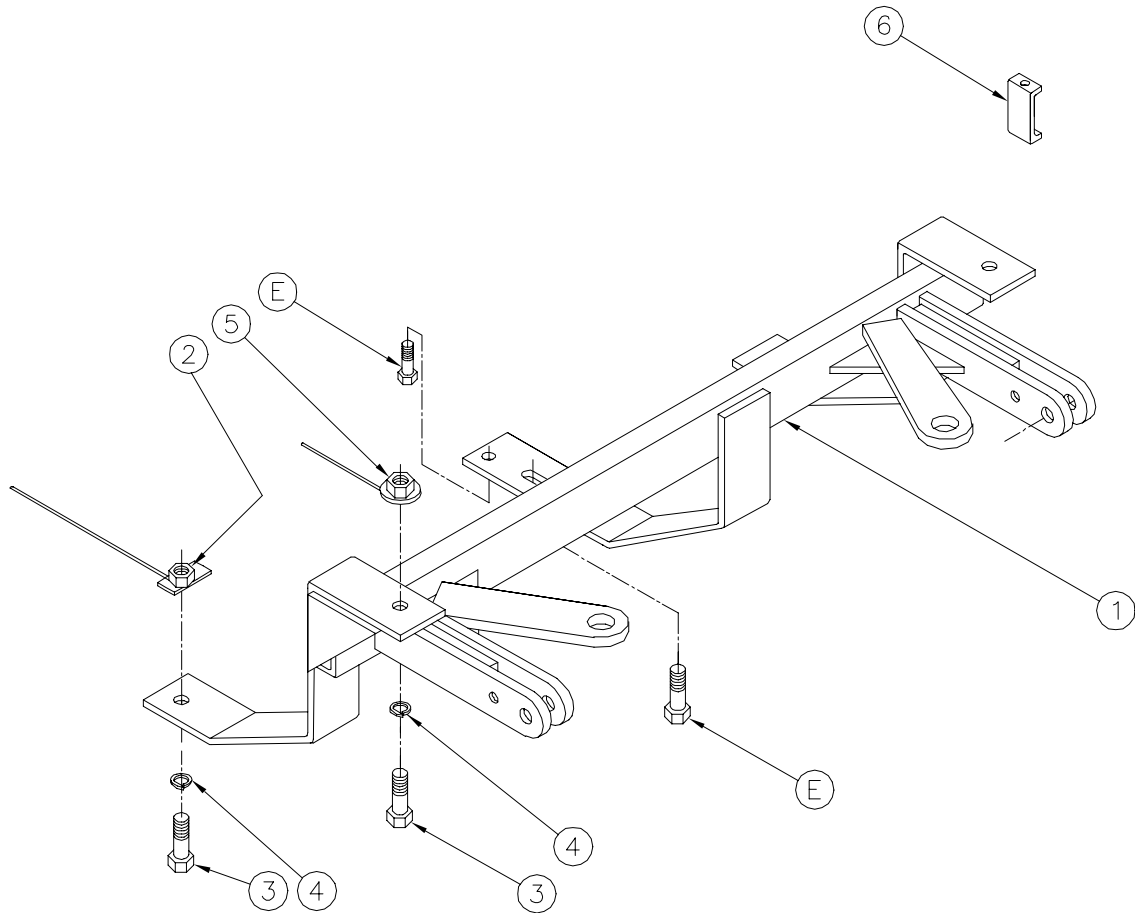
Automatic

Tools Required

3/4" Wrench
 5/8" Wrench
 13mm Wrench
 17/32" Bit
 7/16" Wrench

11/16" Wrench
 10mm Wrench
 15mm Wrench
 Drill

Loctite Blue
 Flathead Screwdriver
 Philips Screwdriver
 Vice Grips



Parts List

Ref. No.	Qty.	Part No.	Description
1	1	61-4930	Weldment Baseplate, 1996 Stratus
2	2	61-4931	1/2 Nut Plate, With 12" Wire
3	4	201-0051	1/2-13 x 1/2 Hex Bolt Grd. 5
4	4	203-0012	1/2 Lock Washer
5	2	61-4874	Weldment , 1/2 Nut Wire
6	1	102-5254	Extension Bracket
7	1	201-0569	1/4 Hex Bolt, Not Shown
8	1	202-0102	1/4 Nut, Nylon Insert, Not Shown
9	1	203-0001	1/4 Washer, Not Shown
E			Existing Hardware