



Strong As An Ox™

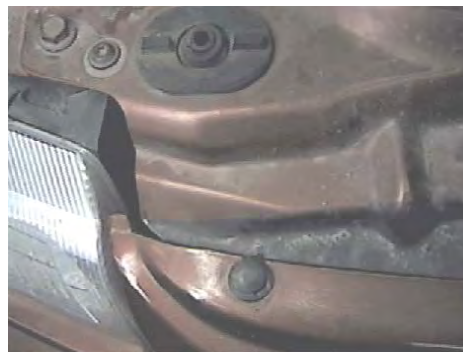
## BX1959 Installation Instructions 1995-2000 Plymouth Breeze

Serial No.

The headlight assembly, front fascia and windshield washer reservoir are removed for baseplate installation. Drilling is required. Trimming of air dam on is required on some models. The BX8869 is available for the vehicle. Attachment Tabs are 24 inches center to center and a height of 13 inches.



1. Remove two torx bolts from the top side of headlight assembly with the T-30 torx, pull assembly forward, unplug electrical connections, and set aside, both sides.



2. Just between headlights, on fascia's edge, are five push pins to remove.



3. Just forward of front tire is one metric bolt to remove with the 10MM socket, both sides.



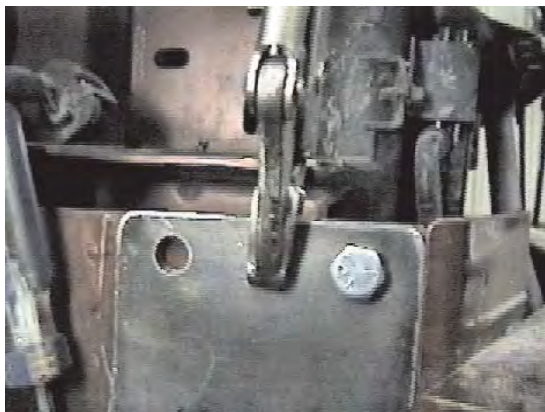
4. Remove two push pins from fascia's upper opening.



5. On bottom edge of fascia are eight push pins to remove, pull fascia forward and set aside.



Strong As An Ox™



6. Remove two front metric bolts from washer reservoir bracket on the passenger's side with the 10MM socket. Slide baseplate between reservoir bracket and frame. Align baseplate with the top edge of frame, as far forward as possible and clamp in place with vise grip, both sides.



7. Using the baseplate as a template, drill the four holes with the 13/32" drill bit, both sides. Insert 3/8-16 x 1" bolt through baseplate into drilled hole and tighten hex nut and lock washer, according to drawing on page 3, both sides. **Be sure to use loctite on all bolts before tightening. Tighten all bolts according to Torque Chart in General Instruction Sheet.**

8. Reinstall washer reservoir with existing bolts, fascia and headlight assemblies. **Be sure all electrical components and hoses are plugged in properly.**
9. The dimensional variations between otherwise identical cars can be considerable. While the location and size of the holes in the baseplate were designed to allow for easy installation, it may be necessary to file a hole slightly to allow a bolt to clear.
10. Install the tow bar and safety cables according to the instructions included in their packages.
11. Do **not** substitute other devices if the tow bar pin and clip are lost.
12. **DEALER OR INSTALLER: BE CERTAIN THE USER RECEIVES THE INSTRUCTION SHEET.**

### Tools Required

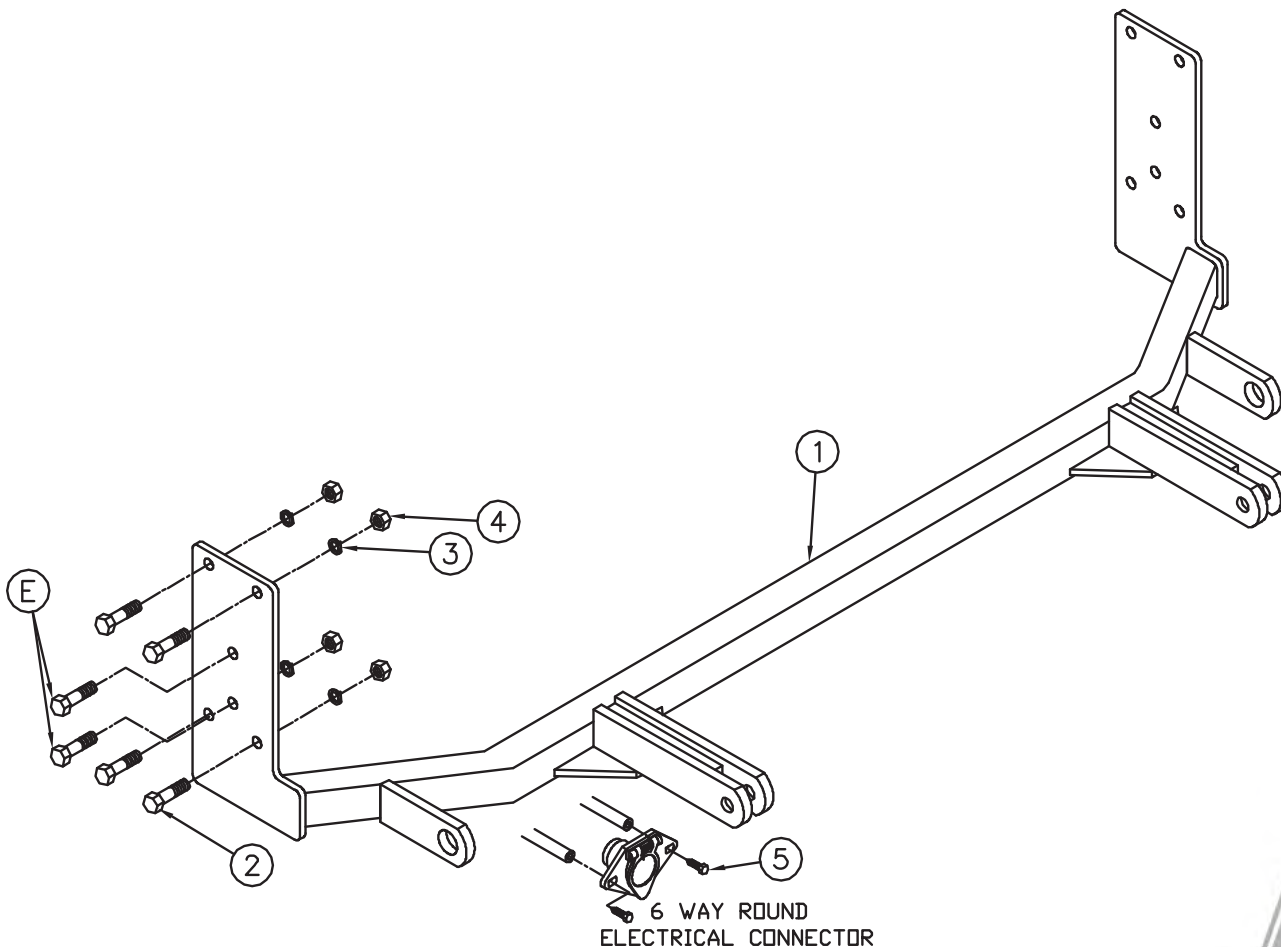
7MM Socket	10MM Socket	11MM Socket
13MM Socket	Loctite	13/32" Drill Bit
Phillips Screw Driver	Vise Grips	9/16" Socket
Pry Bar	Utility Knife	



Strong As An Ox™

### Parts List

Ref. No.	Qty.	Part No.	Description
1	1	61-5917	Weldment, Base Plate, BX1959
2	8	201-0443	3/8-16 x 1 Bolt, Grd. 5, ZP
3	8	203-0010	3/8 Lock Washer, ZP
4	8	202-0003	3/8-16 Hex Nut, ZP
5	2	201-0553	1/4-20 x 1/2 Hx. Wshd, Type F Screw
6	2	202-0047	#10-32 Hex Nut
7	2	203-0054	#10 Lock Washer
8	2	201-0192	#10-32 x 1/2 Slot, Rd. Hd. Screw
9	2	101-5822	Adapter, 4 Way Connector
E	2		Existing Metric Bolts
	2	226-0046	Baseplate Safety Cable, 36" CL III (Not Shown)
	2	229-0359	Quicklink, 3/8, ZP (Not Shown)



**IMPORTANT:** Use only genuine factory replacement parts on your Base Plate. Do not substitute homemade or nontypical parts. If a bolt is lost or in need of replacement, for your safety and the preservation of your Base Plate, be sure to use a replacement bolt of the same grade (Usually Grade 5, refer to parts list). Repair parts may be ordered through your nearest **Blue Ox** dealer or distributor.