



Strong As An Ox™

BX1963 Installation Instructions 2003 Mitsubishi Outlander

Serial No.

The front fascia, brace for cooler on driver's side and metal bumper are removed for baseplate installation. Drilling is required. Trimming of air dam is required. The BX8869 is available for the vehicle. Attachment Tabs are 24 inches center to center and a height of 15 inches.



1. Remove the metric bolts on the top edge of fascia with the 13MM socket.



2. Just forward of front tire, on wheel well edge, remove one metric bolt with the 10MM socket, both sides.



3. Just next to previous bolt, disconnect two clips on wheel well molding with the flat screw driver, both sides.



4. Remove two push pins on wheel well edge, both sides.



5. Separate wheel well molding from fascia's edge.



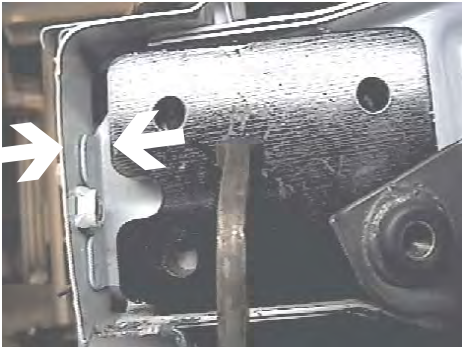
6. Just forward of front tires, on bottom of fascia, remove two push pins.



Strong As An Ox™



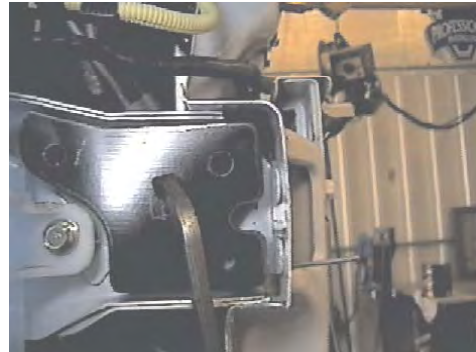
7. Using the needle nose pliers, pinch clips together on pin. While pulling fascia's tab down, remove both pins. Pull fascia forward and set aside.



9. Align driver's side spacer plate with existing hole for cooler brace, tighten 8MM-1.25 bolt and adjust spacer to a level position with the bottom of the frame. Using this spacer plate as a template, drill all three holes with the 13/32" drill bit, remove 8MM bolt and set aside. Take measurement between front edge of spacer plate and the back side of frame end.



8. Remove air dam from below metal bumper and four metric bolts from metal bumper using the 12MM socket, set aside. Locate cooler brace on driver's side and remove one metric bolt from frame.



10. Clamp passenger's side spacer plate in place while adjusting spacer to the same level position with the bottom of the frame and same distance measured on driver's side. Using this spacer plate as a template, drill all three holes with the 13/32" drill bit and set spacer aside.

11. Align passenger's side of baseplate and spacer with drilled holes. Then slide driver's side up to align with drilled holes, slide driver's side spacer in place and clamp to frame. Insert nut plates to align with drilled holes and tighten all 3/8" bolts on both sides. **Be sure to use loctite on all bolts before tightening. Tighten all bolts according to Torque Chart in General Instruction Sheet.**



Strong As An Ox™

12. After baseplate is installed, realign cooler brace with existing hole, insert 8MM-1.25 x 50MM bolt through brace and tighten. **Be sure to use loctite on all bolts before tightening. Tighten all bolts according to Torque Chart in General Instruction Sheet.**



13. Using the utility knife, trim air dam as shown in photos below.

After

Driver's side.

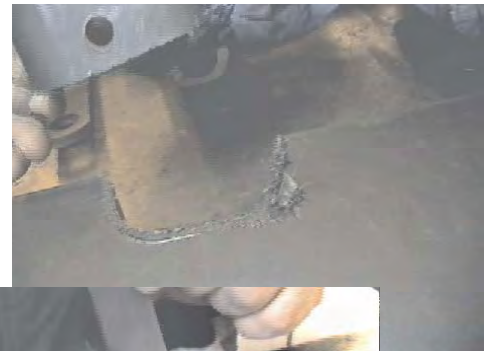


Before



Approximately 3 1/4 inches.

14. Reinstall metal bumper, air dam and fascia.



Middle



After

Passenger's side



Before

Approximately 1 inch between arrows.

15. The dimensional variations between otherwise identical cars can be considerable. While the location and size of the holes in the baseplate were designed to allow for easy installation, it may be necessary to file a hole slightly to allow a bolt to clear.

16. Install the tow bar and safety cables according to the instructions included in their packages.

17. Do **not** substitute other devices if the tow bar pin and clip are lost.

18. **DEALER OR INSTALLER: BE CERTAIN THE USER RECEIVES THE INSTRUCTION SHEET.**

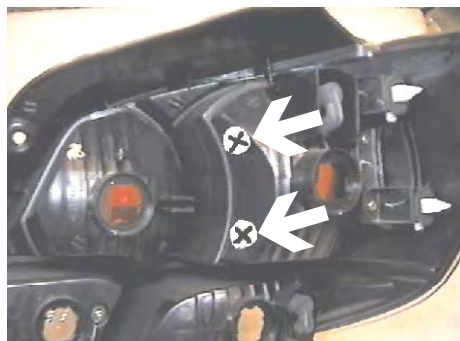


Tools Required

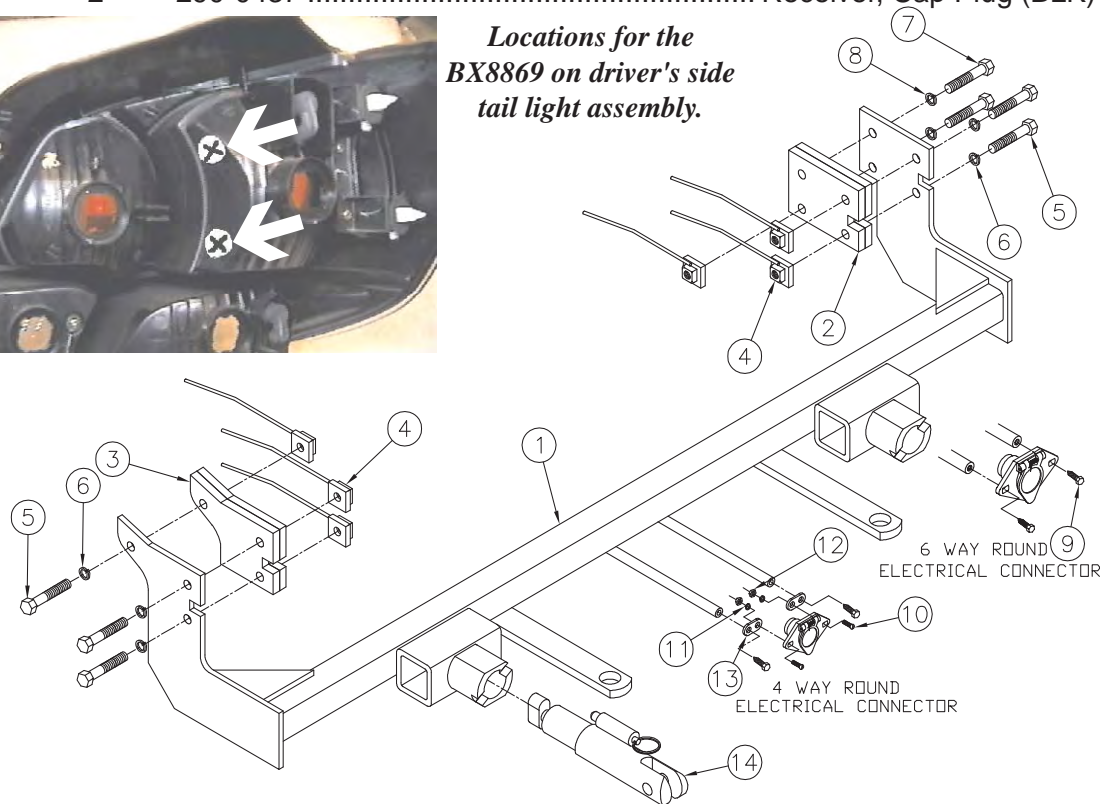
10MM Socket	12MM Socket	13MM Socket
Flat Screw Driver	Loctite	13/32" Drill Bit
Phillips Screw Driver	Vise Grips	9/16" Socket
Utility Knife	Needle Nose Pliers	

Parts List

Ref. No.	Qty.	Part No.	Description
1	1	61-5931	Weldment, Base Plate, BX1963
2	1	61-5936	Weldment, Spacer, DS, BX1963
3	1	61-5937	Weldment, Spacer, PS, BX1963
4	6	61-5208	3/8" Nut Plate, with Wire
5	6	201-0444	3/8-16 x 2 Bolt, Grd. 5, ZP
6	6	203-0010	3/8 Lock Washer, ZP
7	1	201-0419	8MM-1.25 x 50MM Bolt, Grd. 8.8, ZP
8	1	203-0102	8MM Lock Washer, ZP
9	2	201-0553	1/4-20 x 1/2 Hx. Wshd, Type F Screw
10	2	201-0192	#10-32 x 1/2 Slot, Rd. Hd. Screw
11	2	203-0054	#10 Lock Washer
12	2	202-0047	#10-32 Hex Nut
13	2	101-5822	Adapter, 4 Way Connector
14	2	62-3468	Attachment, Assembly, SF/ SB (R)
	2	226-0046	Baseplate Safety Cable, 36" CL III (Not Shown)
	2	229-0359	Quicklink, 3/8, ZP (Not Shown)
	2	290-0437	Receiver, Cap Plug (BLK) (Not Shown)



Locations for the BX8869 on driver's side tail light assembly.



IMPORTANT: Use only genuine factory replacement parts on your Base Plate. Do not substitute homemade or nontypical parts. If a bolt is lost or in need of replacement, for your safety and the preservation of your Base Plate, be sure to use a replacement bolt of the same grade (Usually Grade 5, refer to parts list). Repair parts may be ordered through your nearest **Blue Ox** dealer or distributor.