

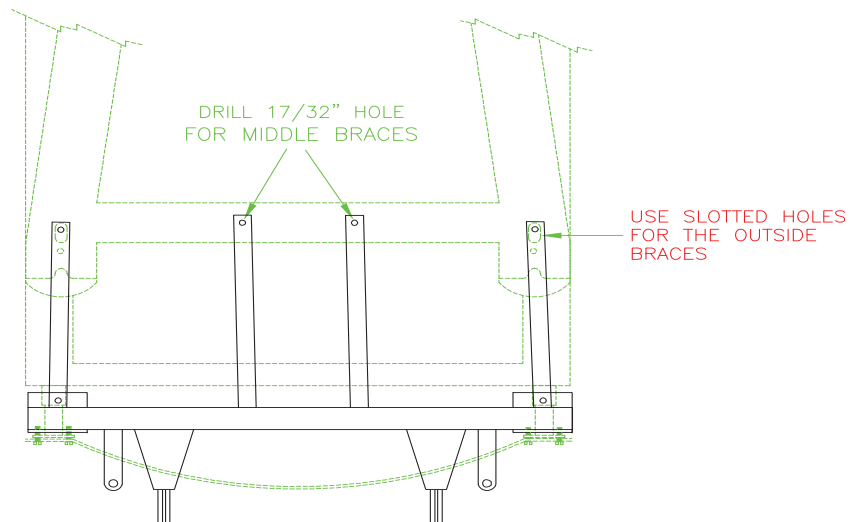


BX2133 Installation Instructions 1994 Lincoln Continental

These vehicles weigh over 3500 lbs and require a Class III (5000 lbs) rated tow bar, hitch, and accessories. Utilization of Blue Ox baseplates with any tow bar not approved by Automatic Equipment Mfg. Co. invalidates the limited warranty.

1. Read the General Instruction Sheet included with this baseplate.
2. The baseplate (Item 1) will bolt to the bottom bolts of the front fender bolt assembly (there are four bolts on each assembly). The braces (Item 2) will bolt to the rear of the baseplate and extend back to the main cross frame of the car. Holes will need to be drilled for the two middle braces and the outside braces will use existing holes of the main cross frame. **Note: When tightening bolts, use Loctite Blue to ensure the nuts will not loosen while vehicle is being towed.**

3. Remove the two bottom bolts from each end of the front fender bolt assemblies. There may be inserts that are placed in between the steel frame and the plastic frame of the bumper. You will need to remove these inserts. Use the 3/8 x 1 3/4 bolts (Item 11) along with the washers (Items 12 and 13) and nuts (Item 14) to bolt the baseplate to the bumper assembly. Tighten the bolts.



4. The center braces will extend back to the main cross frame. Use the holes of the baseplate as a guide for drilling 17/32" holes in the cross frame. After the holes have been drilled, use the 1/2 x 1 1/2" bolts (Item 7) along with lock washers (Items 8) and the 1/2" wire nuts (Item 9) to bolt the braces to the frame.
5. The straight outside braces (Item 2) will bolt to the bottom of the baseplates main braces using the 1/2" bolts, nuts and washers (Items 7, 8 and 10). The other end of the braces will use the slotted holes on the underside of the main frame. Use the 5/8" wirebolts, nuts and washers (Items 4, 5 and 6).
6. The dimensional variations between otherwise identical cars can be considerable. While the location and size of the holes in the baseplate were designed to allow for easy installation, it may be necessary to file a hole slightly to allow a bolt to clear.
7. Install the tow bar and safety cables according to the instructions included in their packages.
8. Do not substitute other devices if the tow bar pin and clip are lost.
9. **DEALER OR INSTALLER: BE CERTAIN THE USER RECEIVES THE INSTRUCTION SHEET.**

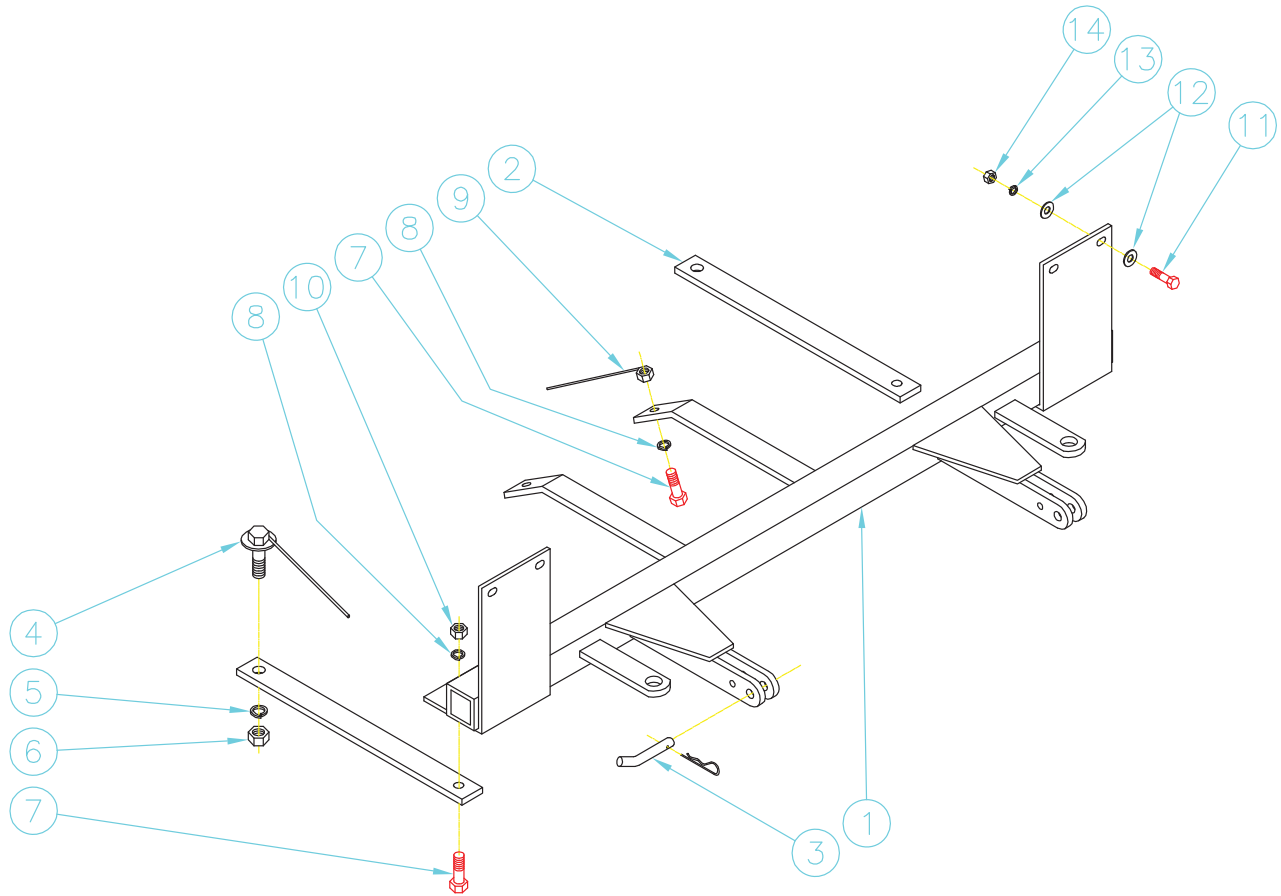
Automatic

Tools Required

9/16" Wrench
17/32" Drill Bit

3/4" Wrench
Drill

7/8" Wrench
Loctite Blue



Parts List

Ref. No.	Qty.	Part No.	Description
1	1	61-5127	Baseplate Weldment
2	2	102-5352	Outside Brace
3	2	61-5180	5/8" Wire Bolt
4	2	203-0013	5/8" Lock Washer
5	2	202-0008	5/8" Hex Nut
6	4	201-0051	1 x 1 1/2" Hex Bolt
7	4	203-0012	1/2" Lock Washer
8	2	61-4029	1/2" Wire Nut
9	2	202-0005	1/2" Hex Nut
10	4	201-0404	3/8 x 1 3/4" Hex Nut
11	8	203-0003	3/8" Flat Washer
12	4	203-0010	3/8" Lock Washer
13	4	202-0003	3/8" Hex Nut
	2	226-0046	Baseplate Safety Cable, 36" CL III (Not Shown)
	2	229-0359	Quicklink, 3/8, ZP (Not Shown)