



Baseplate Installation Instructions

# BX2239 2006-10 Honda Ridgeline Installation Instructions

Serial Number

**Please read BOTH these Installation Instructions and the General Instructions before attempting to install or operate this equipment.**

- Blue Ox® towing products and accessories are intended to be installed by Blue Ox® Dealers who are familiar with our products and have the equipment necessary and knowledge to do "fit work". When necessary Blue Ox® Dealers can be found at [www.blueox.com](http://www.blueox.com) or by contacting our Customer Care Department at (402) 385-3051.
- Many Blue Ox® Baseplates are designed to use existing holes and hardware to mount the baseplate to the towed vehicle. Even though bolts are there, do not assume they are adequate for baseplate mounting. Always use hardware supplied in the hardware kit and existing hardware specified in the Baseplate Installation Instructions.

Attachment Tab Height: 26 1/4"

Attachment Tab Width: 25"

**Bolt Torque Specifications**  
Torque in Foot-Pounds for Metric Bolts

Bolt Size	Grade 8.8	Grade 10.9
6MM	6	8
8MM	16	22
10MM	31	40
12MM	54	70
14MM	89	117

Confirm the towability and pre-towing procedures for your vehicle with the owner's manual or contact the vehicle's manufacturer for specific towing procedures.

**Bolt Torque Specifications**  
Torque in Foot-Pounds for Inch Bolts

Bolt Size	Grade 5	Grade 8
1/4"	10	14
5/16"	19	29
3/8"	33	47
7/16"	54	78
1/2"	78	119
5/8"	154	230



If the front of your vehicle looks different than this, call us at (402) 385-3051.

## WARNING

Failure to read and follow these instructions could result in separation of the towed vehicle from the tow bar, causing property damage, loss of towed vehicle, personal injury or death.

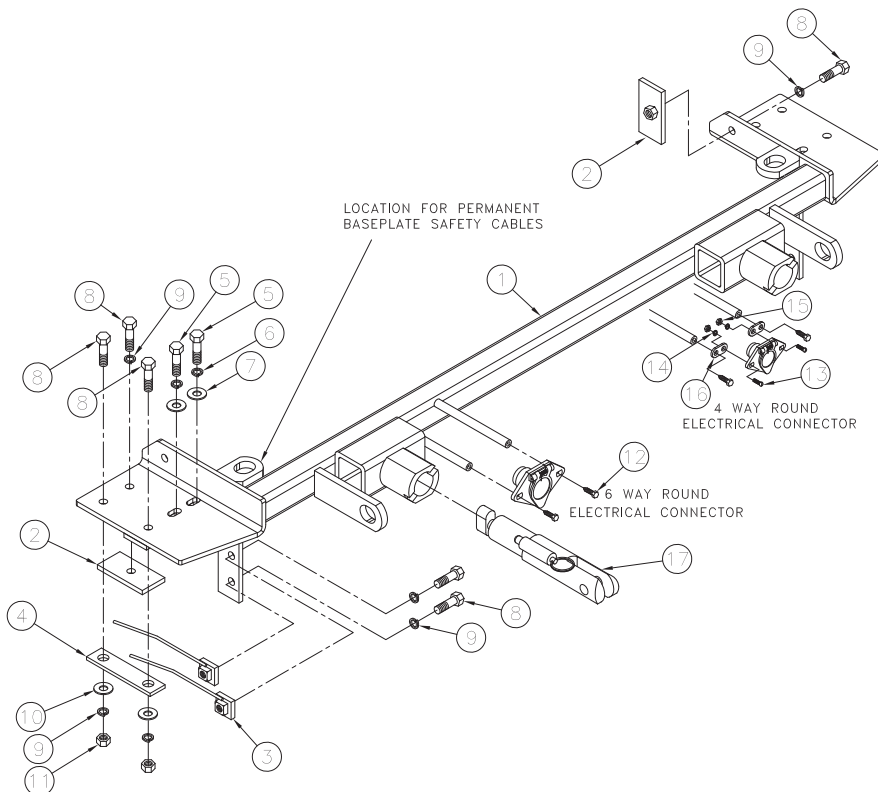
# BX2239

# 2006-10 Honda Ridgeline

## Installation Instructions

### Parts List

Ref. No.	Qty.	Part #	Description
1	1	61-6127	Weldment, Baseplate, BX2239
2	4	61-5589	Nut Plate, 3/8-16 Nut, w/ 14" Wire
3	4	61-5208	Wld, Nut Plt 1/4X1X1, 3/8"/14"Wire
4	2	102-6682	Backing, Plate, BX1015
5	4	201-0418	8MM-1.25 X 35MM Hex Bolt Grd.8.8 ZP
6	4	203-0102	8MM Lock Washer, ZP
7	4	203-0002	5/16 Flat Washer, ZP
8	12	201-0440	3/8-16 X 1 1/2 Hex Bolt, Grd.5, ZP
9	12	203-0010	3/8 Lock Washer, ZP
10	4	203-0003	3/8 Flat Washer, ZP
11	4	202-0003	3/8-16 Hex Nut, ZP
12	2	201-0553	1/4-20 X 1/2 HX.Wshd.Type F Tcs, ZP
13	2	201-0192	10-32 X 1/2 Slot, RD. HD. Screw
14	2	203-0054	#10 Lock Washer
15	2	202-0047	#10-32 Hex Nut
16	2	101-5822	Adapter, 4 Way Connector
17	2	62-3468	Att Tab Assy, Rem, SF/SB, 1 Hole
	2	226-0046	Baseplate Safety Cable, 36" CL III (Not Shown)
	4	229-0359	Quicklink, 3/8, ZP (Not Shown)
	2	290-0437	Cap Plug, Black (Not Shown)



### Tools Required

- 8MM Socket
- 10MM Socket
- 12MM Socket
- 9/16" Socket
- 13/32" Drill Bit
- Utility Knife
- Phillips Screwdriver
- Reciprocating Saw
- Vise Grip
- LOCTITE Red

### Important:

Use only genuine factory replacement parts on your baseplate. Do NOT substitute homemade or non-typical parts. If a bolt is lost or in need of replacement, for your safety and the preservation of your baseplate, be sure to use a replacement bolt of the same grade (In most cases it will be Grade 5, please reference the parts list above). Replacement parts may be ordered through your nearest Blue Ox® Dealer or Distributor, or call our Customer Care Team at (402) 385-3051. Failing to follow and/or altering these installation instructions in either installation or required equipment will void the manufacturer's warranty.

# BX2239

## 2006-10 Honda Ridgeline

### Installation Instructions

#### Attachment Tabs:

Due to the design of the removable tabs, the RangeFinder II and Ambassador tow bars can not be used. Adapters, except the BX8833 and the BX88151, can not be used with this baseplate.

#### Instructions:

The front fascia, headlights, horn bracket, and bumper are removed for the baseplate installation. Drilling is required. Trimming of the air dam is required.

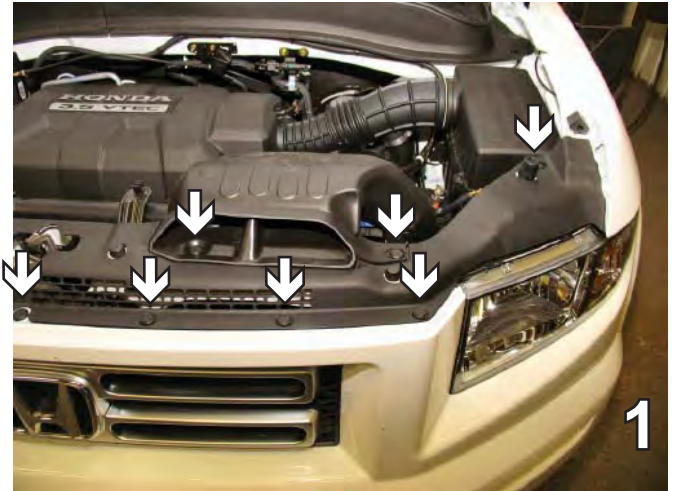
The dimensional variations between otherwise identical vehicles can be considerable. While the baseplate was designed for easy installation, it may be necessary to tailor the baseplate slightly to compensate for auto manufacturer's tolerances. These minor adjustments may include filing a hole slightly, bending electrical rods or bending end plates.

The BX8869 Bulb and Socket Wiring Kit is recommended for this vehicle.



Handling of some cosmetic parts when installing this product may require the use of protective covers, rags, specialty tools, etc. to prevent damage.

#### Installation Instructions:



1. Remove 12 pushpins from the plastic above the radiator. Remove the plastic from the top of the radiator. Set pushpins aside to reinstall later.



2. Just forward of the front tire, on the edge of the fascia, use an 8MM socket or Phillips screwdriver to remove one metric bolt. Set bolt aside to reinstall later. Do this to both sides of the vehicle.

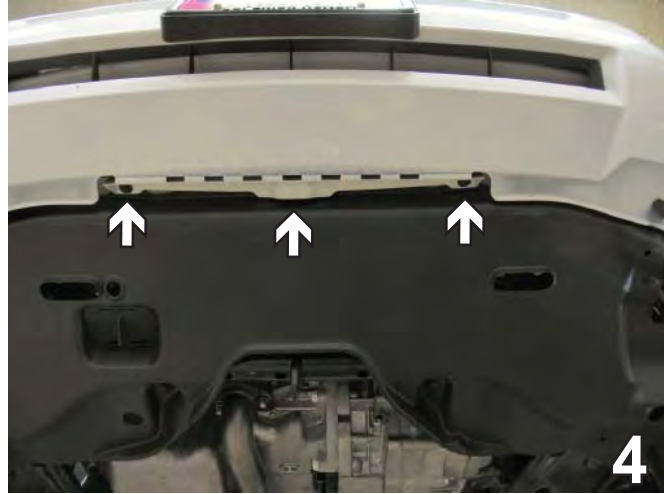
# BX2239

## 2006-10 Honda Ridgeline

### Installation Instructions



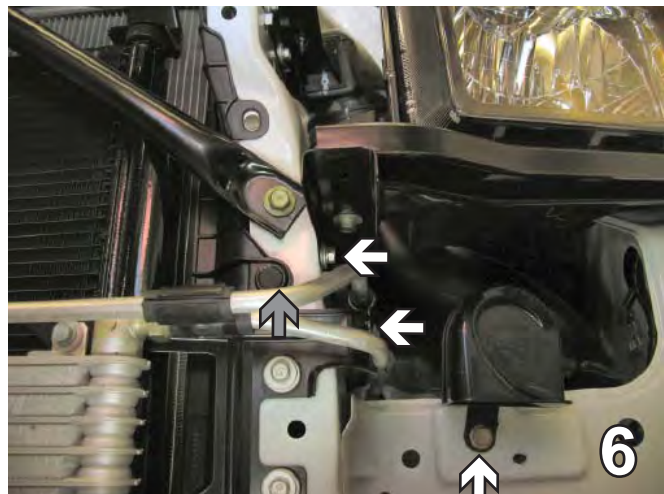
3. Just forward of the front tire, on the outermost bottom edge of fascia, remove two metric bolts using a 10MM socket. Do this to both sides of the vehicle. Set bolts aside to reinstall later.



4. Using a 10MM socket, remove three metric bolts that run horizontally along the bottom of fascia, where the belly pan and fascia meet. Set bolts aside to be reinstalled later.



5. Remove the metric bolt, using an 10MM socket. Also remove the push pin above the headlight, gray arrow. Do this to both sides of the vehicle. Set bolts and push pins aside to reinstall later. Start fascia removal by pulling down on the fascia where it meets the fender, just forward of the front tire. While still on the side of the vehicle, pull fascia slightly forward. Do the steps above to both sides of the vehicle. From the front of the vehicle, pull fascia forward to remove. Set fascia aside carefully to reinstall later.



6. Remove another push pin from underneath, gray arrow. Remove the two bolts on the side. Using a 12MM socket, remove the bolt from the horn bracket, bottom arrow. Do this to both sides of the vehicle. Set push pins and bolts aside to reinstall later.

BX2239  
2006-10 Honda Ridgeline  
Installation Instructions



7. Remove this bolt on the side. Do this to both sides of the vehicle. Set bolts aside to reinstall later.



8. Using a Phillips screwdriver, remove the screw. Do this to both sides of the vehicle.



9. Using a 12MM socket, remove two metric bolts on the top and one metric bolt underneath the metal bumper. Do this to both sides of the vehicle. Set bolts aside to reinstall later.



10. Lay the bracket of the metal bumper on a solid surface. Use a hammer to pound and flatten the rib on top of the bracket. Do this to both sides of the vehicle.

When using power drills be aware of the dangers of torque and drill bit length.

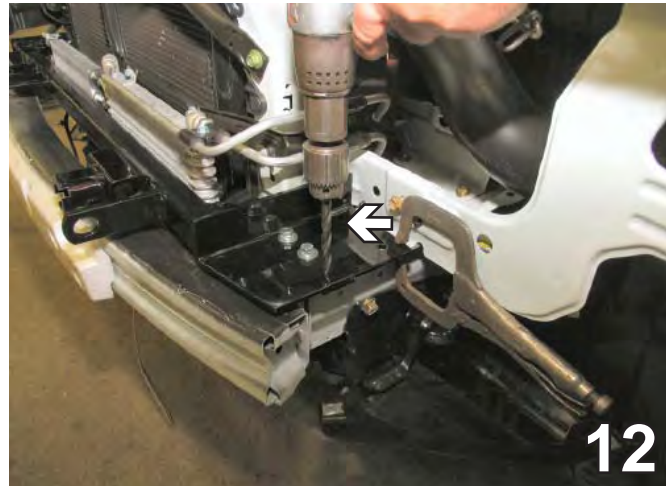
# BX2239

## 2006-10 Honda Ridgeline

### Installation Instructions

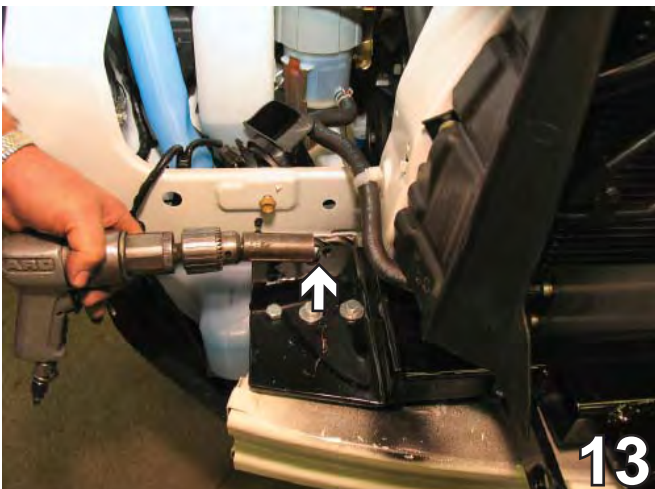


11. Slide metal bumper back on to the frame rail, guiding the baseplate on top of frame rail. Align with the existing holes of the bumper bracket. Insert two 8MM-1.25 x 30MM hex bolts through the baseplate into the two existing bumper bracket holes using 5/16" lock washer and 5/16" flat washers Snug the bolts down. Do this on both sides.

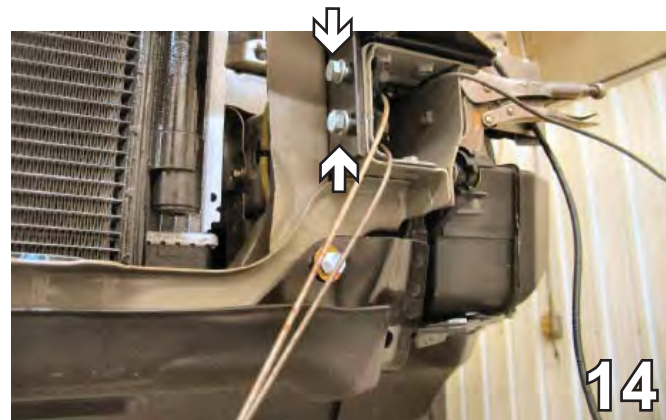


12. Using a vice grip; clamp the rear of the baseplate to the webbing. Using the baseplate as a template, drill into the frame rail through the three baseplate holes using a 13/32" drill bit. Remove the two bolts and pull the bolt out of the bottom. Remove the bumper. Line up the baseplate with the back hole. Guide a 3/8-16 nut plate through the frame opening and align with bolt hole. Insert the 3/8-16 hex bolt into those bolt holes with the 3/8 lock washer and hand tighten. Do this on both sides of the vehicle. **Be sure to use LOCTITE Red on ALL bolts.**

**BE SURE TO USE LOCTITE® RED ON ALL BOLTS BEFORE TIGHTENING. TIGHTEN ALL BOLTS ACCORDING TO THE TORQUE CHART ON THE FRONT PAGE OF THESE INSTRUCTIONS OR ON PAGE 3 OF THE BASEPLATE TOWING GENERAL INSTRUCTIONS.**



13. Temporarily slide the metal bumper in between the frame and the baseplate. Insert additional bolts and tighten using Loctite. Torque to specs. Do this on both sides. Drill the side hole being sure not to drill into the radiator, use a socket over the drill bit.

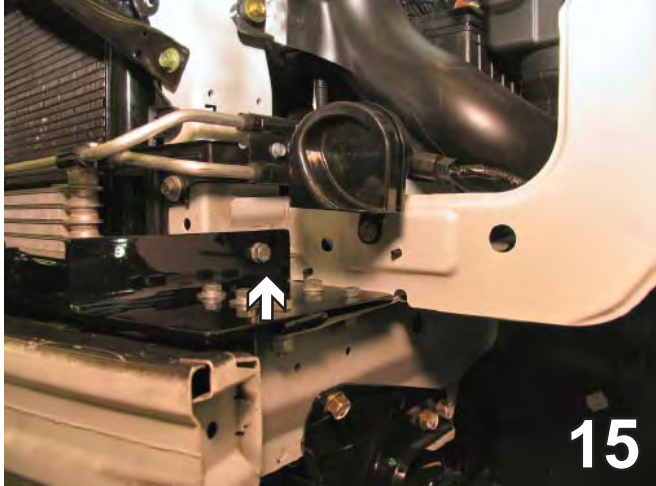


14. Remove metal bumper. Insert the 3/8-16 hex bolts with the 3/8" lock washer through the baseplate holes on the side of the frame rail. Hand tighten bolts to the 3/8-16 nut plates placed on hex bolts through opening in frame end. Do this to both sides of the vehicle. Using diagonal cutters, cut all nut plate wires flush with the end of the frame. Reinstall bumper and tighten bolt for steps 12, 13 and 14. **Be sure to apply LOCTITE Red to ALL bolts.**

# BX2239

## 2006-10 Honda Ridgeline

### Installation Instructions

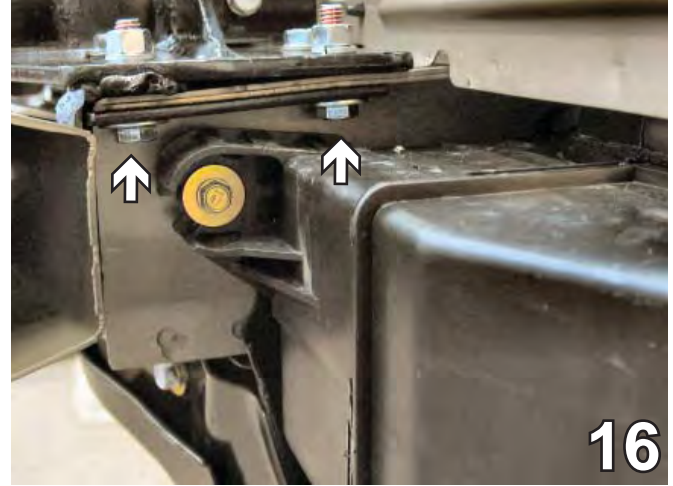


15. Insert the 3/8-16 hex bolts with the 3/8" lock washer through the baseplate holes on the side of the radiator support. Then tighten bolts to the 3/8-16 nut plates on back side of radiator support. Do this to both sides of the vehicle. Using diagonal cutters, cut all nut plate wires flush with the end of the frame. **Be sure to apply LOCTITE Red to ALL bolts.**

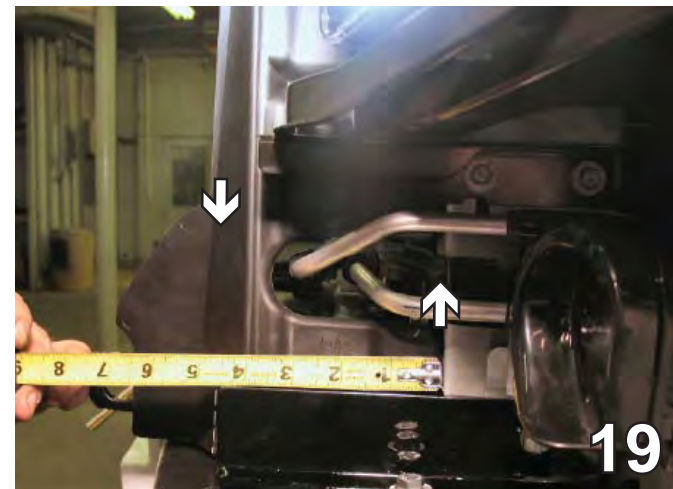
17. Reinstall the horns using the 12MM socket. Put the headlight assemblies back on and plug in. Do this to both sides of the vehicle.



18. Just outside the driver's side radiator, trim the air dam up 1 1/2", follow the top of the ridge all the way across.



16. Place the backing plate on the bottom side of the frame webbing to align with drilled holes, insert the 3/8-16 x 1 1/2" hex bolts and 3/8" flat washers into this hole, tighten the 3/8-16 hex nuts and 3/8" lock washers. Reinstall the air baffle to its original position.



19. Trim 4 1/2" across, leave the tab by cutting below the tab.

Install the tow bar and safety cables according to their instructions. When demonstrating this to the customer, be sure to include all of the Blue Ox packaging and contents.

Reinstall fascia. Be sure to install all pushpins and bolts.

Baseplate Installation is now Complete.

BX2239  
**2006-10 Honda Ridgeline**  
Installation Instructions

**Be sure that ALL electrical connections are plugged in properly and functioning BEFORE Installing the fascia.**

**DEALER OR INSTALLER:**

**Be certain the user receives the instruction sheets for their products.**



**With removable tabs installed.**

If the baseplate is in an accident, it must be replaced. DO NOT use it again! An accident can cause unseen damage and using it again could result in more damage or serious injury. DO NOT use the baseplate if it is damaged or missing parts.

**CUSTOMER SERVICE COMMITMENT**

Blue Ox is committed to providing you with exceptional customer care throughout your lifetime with our products. Our team is here to assist you with any questions you may have regarding the performance of your product. Simply call (402) 385-3051 and you can speak with our customer care team.

Additionally, please visit our website to see which rallies our Destination America team will be attending. For a nominal fee, our service technician will service your towing system to ensure it's in proper working condition. Also as a commitment to our customers, should you visit our factory you can stay at our full service Blue Ox campground at no charge along with enjoying a factory tour.

Again thank you for being our customer and for the confidence you have shown in the performance of our products. It is because of customers like you we enjoy the success we have today.



© 2009, 10 Blue Ox  
One Mill Road, Industrial Park  
Pender, Nebraska 68047  
Phone: (402) 385-3051  
Toll Free: (888) 425-5382  
Fax: (402) 385-3360  
[www.blueox.com](http://www.blueox.com)