



Strong As An Ox™

BX2316 Installation Instructions

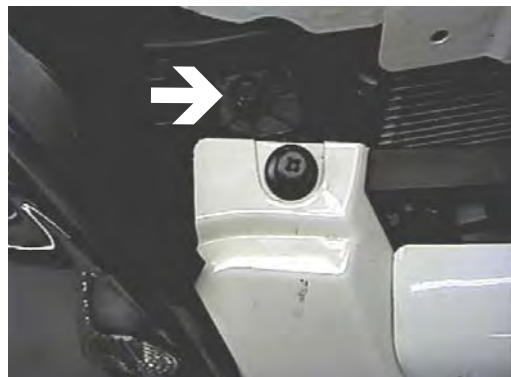
Serial No.

2003 Hyundai Accent

The front fascia, window washer reservoir, head light assemblies and factory tie down brackets are removed for baseplate installation. The two factory tie down brackets will not be reinstalled. No holes to drill and there is no trimming of fascia. The attachment tabs are centered at 22 inches and at 11 1/2 inches height.



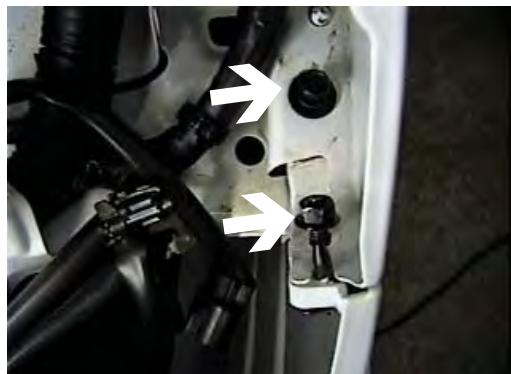
1. Remove two phillips push pins from the top side of fascia.



2. Remove phillips push pin from top side of fascia just inside of head light assembly, both sides. Locate metric bolt just behind phillips push pins and remove them with the 10MM socket, both sides.



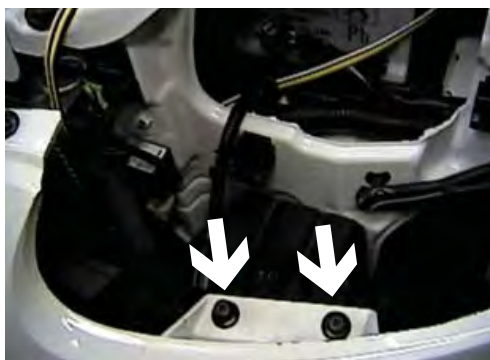
3. Remove one metric bolt from top of head light assembly, pull assembly forward, unplug and set aside, both sides.



4. Just behind head light assembly area, in fender, is one metric bolt and one metric nut to remove with the 10MM socket.



5. Remove two phillips push pins from the upper fascia opening.



6. Remove the two phillips push pins located just under head light assembly on both sides, pull fascia forward and set aside.



Strong As An Ox™



7. Remove two phillips push pins from bottom of fascia just forward of front tires.



8. Just forward of front tire, on the outside corner of fascia, is one metric bolt to remove with the 8MM socket, both sides.



9. Remove two phillips push pins from lower tabs of fascia, pull outside corners of fascia down and forward, unplug electrical connections and set fascia aside.



10. Loosen metric bolt located just above tie down bracket on passenger's side and remove one metric bolt on the other side of the tank, with the 10MM socket.



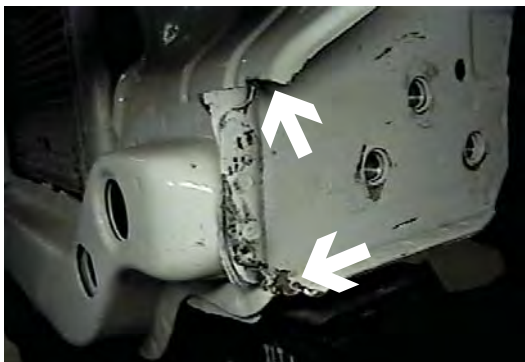
11. Drain window washer reservoir or plug water lines, unplug electrical connections and remove the metric bolt with the 10MM socket from the top of reservoir near fill spout, set reservoir aside.



12. Remove the three metric bolts from the tie down brackets using the 17MM socket, both sides. **Factory tie down brackets will not be reinstalled.**



Strong As An Ox™



13. Using the hack saw, make a horizontal cut along the lower edge of webbing to the frame. Make a second cut 3" above first cut and fold webbing forward (see Photo).

15. Reinstall window washer reservoir, reconnect electrical and plug in water lines.

16. Reinstall fascia and head light assemblies making sure all electrical connections are established.

17. The dimensional variations between otherwise identical cars can be considerable. While the location and size of the holes in the baseplate were designed to allow for easy installation, it may be necessary to file a hole slightly to allow a bolt to clear.

18. Install the tow bar and safety cables according to the instructions included in their packages.

19. Do **not** substitute other devices if the tow bar pin and clip are lost.

20. **DEALER OR INSTALLER: BE CERTAIN THE USER RECEIVES THE INSTRUCTION SHEET.**



14. Slide baseplate into place, align with tie down bracket holes, place spacer plate between baseplate and frame. Install and tighten 12MM bolts and lock washers while holding baseplate level. **Be sure and use loctite on all bolts before tightening. Tighten all bolts according to torque chart in the General Instruction Sheet.**





Strong As An Ox™

Tools Required

17MM Wrench
10MM Wrench

Loctite Blue
Vise Grips

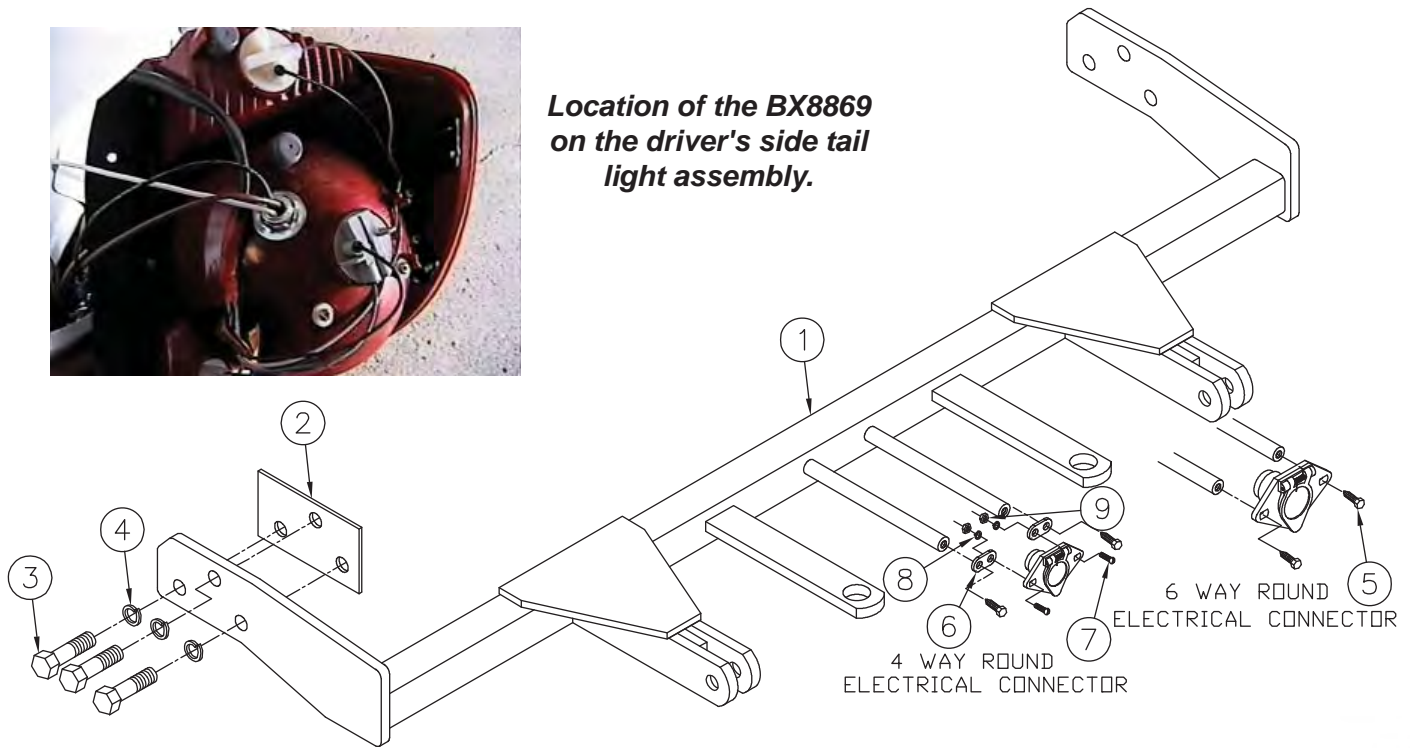
8MM Socket
Phillip Screw Driver

Parts List

Ref. No.	Qty.	Part No.	Description
1	1	61-5893	Weldment, Base Plate, BX2316
2	2	102-6428	Spacer Plate, BX2316
3	6	201-0603	12MM-1.25 x 45MM, Hex Bolt, Grd. 8.8, ZP
4	6	203-0105	12MM Lock Washer, ZP
5	2	201-0553	1/4-20 X 1/2 Hx. Wshd, Type F Screw
6	2	203-0054	#10 Lock Washer
7	2	202-0047	#10-32 Hex Nut
8	2	101-5822	Adapter, 4 Way Connector
9	2	201-0192	#10-32 x 1/2 Slot, Rd. Hd. Screw



**Location of the BX8869
on the driver's side tail
light assembly.**



IMPORTANT: Use only genuine factory replacement parts on your Base Plate. Do not substitute homemade or nontypical parts. If a bolt is lost or in need of replacement, for your safety and the preservation of your Base Plate, be sure to use a replacement bolt of the same grade (Usually Grade 5, refer to parts list). Repair parts may be ordered through your nearest **Blue Ox** dealer or distributor.