



# BX2322

# 2004 Hyundai Santa Fe

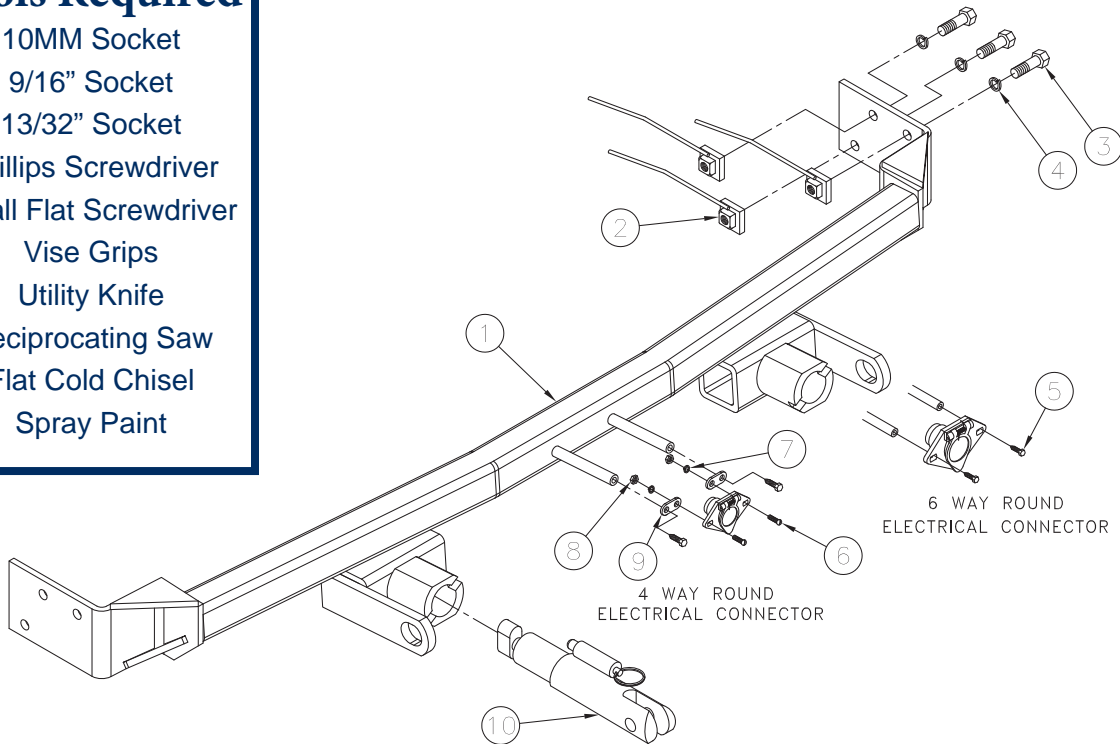
## Installation Instructions

### Parts List

Ref. No.	Qty.	Part #	Description
1	1	61-6214	Weldment, Baseplate, BX2322
2	6	61-5208	3/8" Nutplate, with 14" Wire
3	6	201-0440	3/8-16 x 1 1/2" Bolt, Grd. 5, ZP
4	6	203-0010	3/8" Lock Washer, ZP
5	2	201-0553	1/4-20 x 1/2" Hx. Wshd, Type F Screw
6	2	201-0192	#10-32 x 1/2" Slot, Rd.Hd. Screw
7	2	203-0054	#10 Lock Washer
8	2	202-0047	#10-32 Hex Nut
9	2	101-5822	Adapter, 4 Way Connector
10	2	62-3468	Att Tab Assy, Rem, SF/SB, 1 Hole
	2	226-0046	Baseplate Safety Cable, 36" CL III (NS)
	2	229-0359	Quicklink, 3/8, ZP (Not Shown)
	2	290-0437	Cap Plug (Not Shown)

### Tools Required

10MM Socket  
 9/16" Socket  
 13/32" Socket  
 Phillips Screwdriver  
 Small Flat Screwdriver  
 Vise Grips  
 Utility Knife  
 Reciprocating Saw  
 Flat Cold Chisel  
 Spray Paint



### Important:

Use only genuine factory replacement parts on your baseplate. Do NOT substitute homemade or non-typical parts. If a bolt is lost or in need of replacement, for your safety and the preservation of your baseplate, be sure to use a replacement bolt of the same grade. In most cases it will be Grade 5—please reference the parts list above. Replacement parts may be ordered through your nearest Blue Ox® dealer or distributor, or call our 24/7 Customer Care Team at (402)385-3051 or toll free (888) 425-5382.

# BX2322

## 2004 Hyundai Santa Fe

### Installation Instructions

#### Attachment Tabs:

Due to the design of the removable tabs, the RangeFinder II, Adventurer, and Ambassador tow bars can not be used. Adapters, except the BX8833 and the BX88151, can not be used with this baseplate.

#### Instructions:

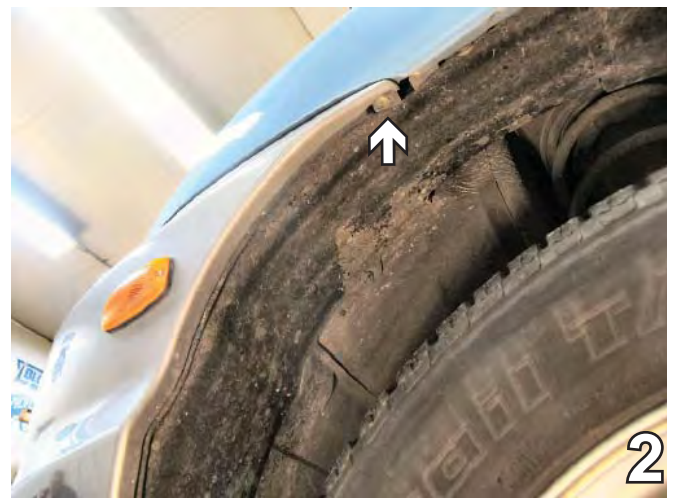
The headlight assembly and front fascia are removed for baseplate installation. Drilling is required.

The dimensional variations between otherwise identical vehicles can be considerable. Although the baseplate was designed for easy installation, it may be necessary to tailor the baseplate slightly to compensate for auto manufacturer's tolerances. These minor adjustments may include filing a hole slightly, bending electrical rods, and/ or bending end plates.

The BX8869 Bulb and Socket Wiring Kit is recommended for this vehicle.



1. Remove six Phillips pushpins from the top edge of the fascia. Set pushpins aside to be reinstalled later.



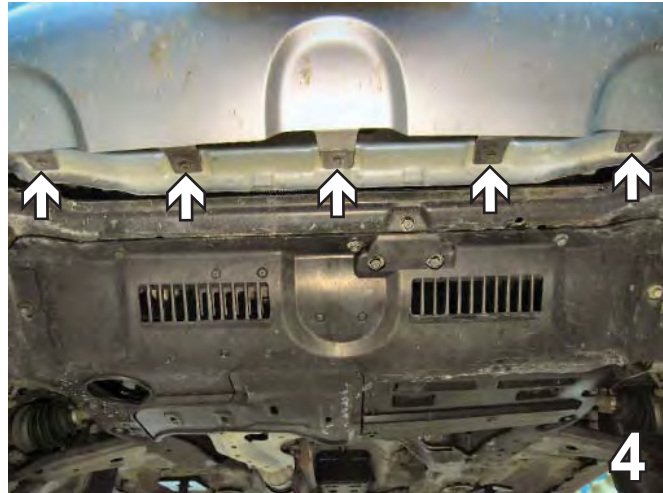
2. Just forward of the front tire is one Phillips screw to remove with the Phillips screwdriver. Do this to both sides of the vehicle. Set screws aside to be reinstalled later.



BX2322  
2004 Hyundai Santa Fe  
Installation Instructions



3. Remove the two Phillips screws just forward of the front tire, on the underside of the fascia, with the Phillips screw driver. Do this to both sides of the vehicle. Set screws aside to be reinstalled later.



4. Remove the five metric bolts from the lower edge of the front fascia with the 10MM Socket. Set bolts aside to be reinstalled later.



5. Using the 10MM socket, remove the three metric bolts from the headlight assembly. Pull assembly forward and unplug electrical connections. Do this to both sides of the vehicle. Set headlight assemblies and metric bolts aside to be reinstalled later.

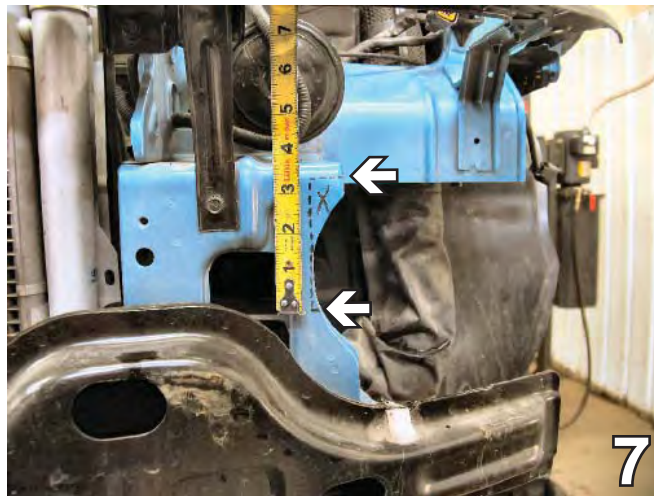


6. Just below headlight assembly is a Phillips pushpin to remove. Do this to both sides of the vehicle. Set pushpins aside to be reinstalled later. Pull fascia corner out to the side and then forward. Unplug marker lights and unplug fog light, if applicable. Set fascia aside to be reinstalled later.

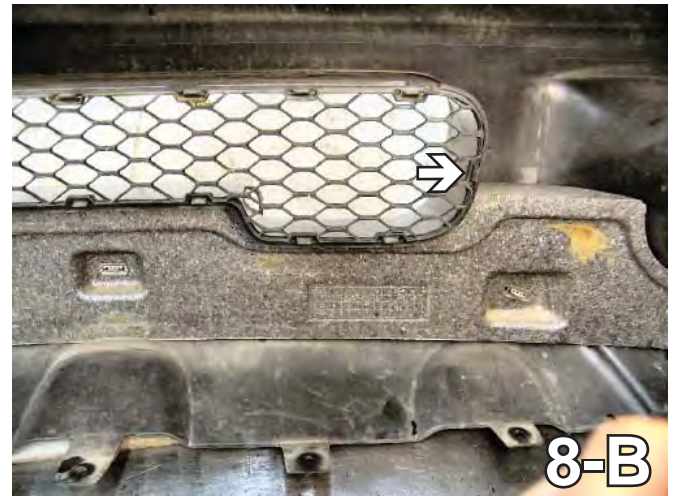
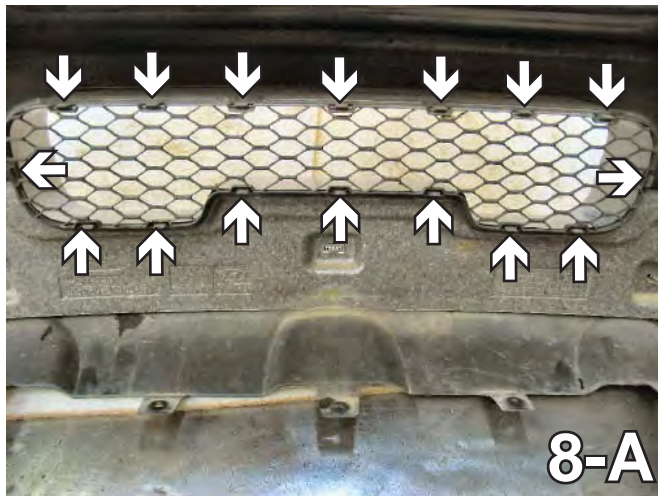
# BX2322

## 2004 Hyundai Santa Fe

### Installation Instructions



7. Mark two horizontal lines, one  $3\frac{3}{4}$ " and one  $\frac{5}{8}$ " down from the top edge of frame's front edge. Mark a vertical line flush with the outside edge of the frame. Remove this area with the Reciprocating Saw. Do this to both sides of the vehicle. Using a good quality paint, spray all cut edges of the frame to prevent rusting.



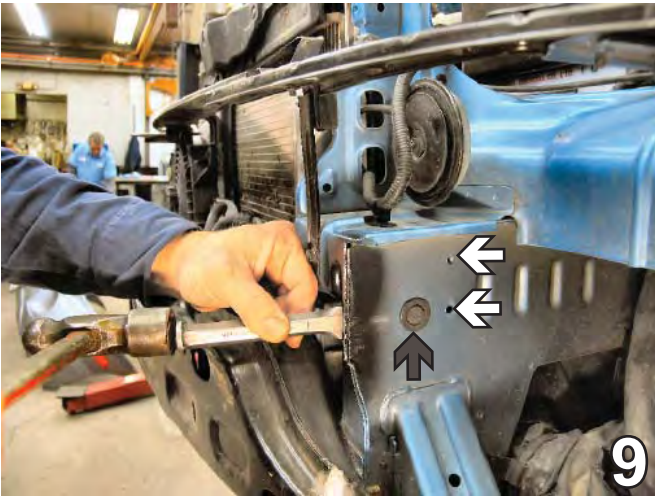
8. Set the front fascia face down on a soft surface to protect it from being scratched. Using a small flat screwdriver, release the sixteen clips from the grille, shown in 8-A. Remove the side clip from the fascia with a utility knife 8-B. The **GRILLE** will **NOT** be reinstalled.



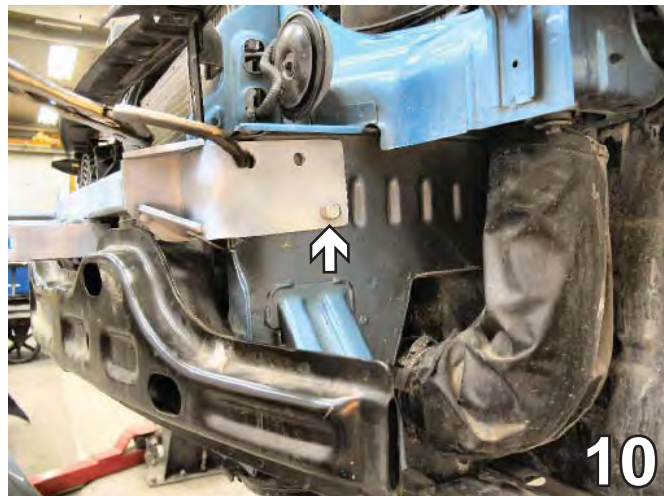
# BX2322

## 2004 Hyundai Santa Fe

### Installation Instructions



9. Remove the two weld nuts from the existing holes inside the frame with the Flat Cold Chisel, see grey arrow in the photo above. Remove the rubber plug from the frame, please reference the white arrows in the photo above. Do this to both sides of the vehicle. Plugs will NOT be reinstalled.



10. Slide the baseplate on the frame to align lower back hole with the existing lower hole in the frame. Clamp in place with the a vise grip to the frame. Align passenger's side of baseplate to the same location on the frame and clamp in place. Using the baseplate as a template, ream out the existing hole with the 13/32" drill bit. Insert the 3/8" nut plate into the opening on the end of the frame to align with the drill hole. While maintaining a level position with the frame, tighten the 3/8" lock washer and 3/8-16 x 1 1/2" hex bolt into the nut plate. Do this to both sides of the vehicle.

**\*\*BE SURE TO USE LOCTITE® RED ON ALL BOLTS BEFORE TIGHTENING. TIGHTEN ALL BOLTS ACCORDING TO THE TORQUE CHART ON THE FRONT PAGE OF THESE INSTRUCTIONS OR ON PAGE 3 OF THE BASEPLATE TOWING GENERAL INSTRUCTIONS.**

**BASEPLATE IS PAINTED WHITE TO INCREASE VISIBILITY IN PHOTOS.**



11. Using the baseplate as a template, drill the two remaining holes with the 13/32" drill bit. Do this to both sides of the vehicle.



12. Insert the 3/8" nut plates into the opening on the end of the frame to align with drilled holes. Tighten the 3/8" lock washers and the 3/8-16 x 1 1/2" hex bolts into the nut plates., Do this to both sides of the vehicle.

# BX2322

## 2004 Hyundai Santa Fe

### Installation Instructions

13. Reinstall the headlight assemblies and the fascia. Be sure to reconnect all electrical connections to fascia and headlights. Installation of baseplate is complete.

Install the tow bar and safety cables according to the instructions included in their packages.

Do **NOT** substitute other devices if the tow bar pin and clip is lost



The BX8869 Bulb & Socket Wiring Kit is recommended to be used with this vehicle.



BX2322  
**2004 Hyundai Santa Fe**  
Installation Instructions

## **Customer Service Commitment**

Blue Ox® is focused on providing exemplary customer service, as observed in our mission statement and guiding principles. In accordance with this objective, Blue Ox® is proud to provide services such as repairs and general maintenance of Blue Ox® products at over 150 RV Rallies. Look for our Destination America or Blue Ox® Racing service crews at the next rally or race that you attend. If you were not present, you will find an informative, personalized note explaining any services that may have been performed to your Blue Ox® products.

Blue Ox® also offers educational seminars at rallies and through our Park and Resort teams. In addition, Blue Ox® customers visiting our factory may take advantage of the well-equipped Blue Ox® RV park at no charge to you, our valued and appreciated customer.



© 2005 Blue Ox  
One Mill Road, Industrial Park  
Pender, Nebraska 68047  
Phone: (402) 385-3051  
Fax: (402) 385-3360  
[www.blueox.us](http://www.blueox.us)