



## STEP 1 – PRIOR TO INSTALLATION

- A) Bushwacker®** only approves installing the flares according to these written instructions with the hardware provided. **WARNING:** Failure to install according to these instructions will invalidate the warranty. This includes, but is not limited to using alternative installation methods, hardware, or materials. **DO NOT USE:** Loctite, SuperGlue, or similar products on the hardware or the flares.
- B) Fit:** Verify the fit of the flares to vehicle. (Some filing, sanding, or cutting may be necessary to ensure proper fit).
- C) Painting:** (Optional) if paint is desired it must be done prior to installing flares on vehicle. Clean outer surface with a good grade degreaser. **DO NOT USE LACQUER THINNER OR ENAMEL REDUCER AS A DEGREASER.** Wipe outer surface thoroughly with a tack rag prior to paint. Application of plastic adhesion promoter for ABS plastic as per your paint system manufacturer's recommendations is required. Paint flares using a high quality enamel, or polyurethane automotive paint. If painting edge trim (not recommended), use a flex additive.
- D) Performance:** Using larger Tires may increase the area required to turn the vehicle. Some Tire/Rim combinations may require lowering bump stops and or installing steering stops to prevent tire from contacting flare.
- E) Exhaust System:** Modifications may be necessary to maintain a minimum 4" clearance between flares and exhaust pipes. (Exhaust gases should not vent directly onto flares)
- F) Metal Protection:** All exposed fasteners and bare metal should be treated with rust resistant paint **BEFORE** installing flares. Spray inner fender wells with undercoating **AFTER** flare attachments have been completed.
- G) Decals:** Flares may interfere with existing decals on vehicle. If you wish, remove decals prior to installation of flares.
- H) Care & Cleaning:** Bushwacker fender flares are built to last; any detergent you use to wash your vehicle is sufficient to clean the flare. Do not use any harsh abrasive detergents.

# RAM DRT Style® Fender Flares Set of 2 (Rear)

Set Part #50074-02

Rev-1 10/23/2018

For complete fitment info visit : [www.bushwacker.com](http://www.bushwacker.com)

## TOOLS FOR EASY INSTALLATION:

- Utility Knife
- #2 Phillips Driver
- Socket Wrench
- 8mm Socket
- Awl or Similar Pointed Tool
- Plastic Fastener Removal Tool

**PLEASE READ:** Dirt and debris can become lodged between the fender flares and the vehicle's fenders, causing scratching and paint wear from vibration. Lund International is not responsible for any damage, and the installation of our fender flares is done with the buyer's understanding that this scratching and paint wear may occur.

## LIMITED LIFETIME WARRANTY AGAINST ANY MANUFACTURING DEFECTS

- To claim a warranty, you must provide Proof of Purchase.



The material that your product is made from can be recycled. Please also consider recycling the packaging that your product came in.



## Included in Hardware Kit:

- |    |   |    |   |    |   |    |   |    |  |
|----|---|----|---|----|---|----|---|----|--|
| 1. |  | 2. |  | 3. |  | 4. |  | 5. |  |
|    | CL1-0022,<br>#10 "U" Clip,  |    | SW1-0056,<br>#8 x 3/4"<br>PH Screw,   |    | MT1-0014,<br>1" x1.5" x.01"<br>Black Mylar Tab,                                     |    | ET1-0002,<br>Edge Trim Tool,  |    | GP1-0025,<br>EX4008 Wiper<br>Style Edge Trim,<br>200 inches                          |
|    | 6 pcs   |    | 6 pcs   |    | 6 pcs   |    | 1 pc  |    |  |

If your flares already have the edge trim installed, skip to Rear Flare Installation Step 1.

## STEP 2 - EDGE TRIM INSTALLATION

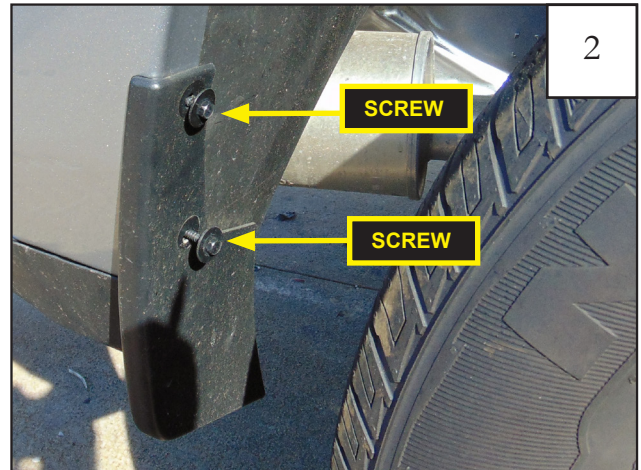
- A) Peel two to three inches of red vinyl backing away from Edge Trim (GP1-0025) tape. Applying the adhesive side of the edge trim to the inner side of the flare, affix the edge trim to the top edge of the flare (the portion that comes in contact with the vehicle).
- B) Press edge trim into place along the top edge of the flare in one-foot increments, pulling red vinyl backing free as you continue to work your way around the top edge of the flare.



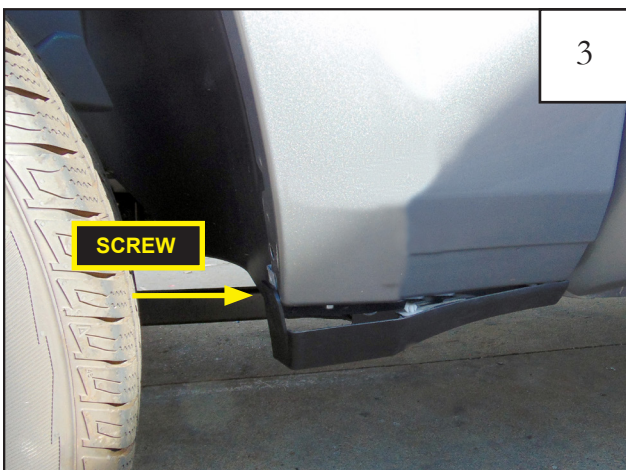
## Rear Flare Installation Procedures (Passenger's Side)



Locate the (2) factory installed mud flaps on the passenger side rear wheel well.



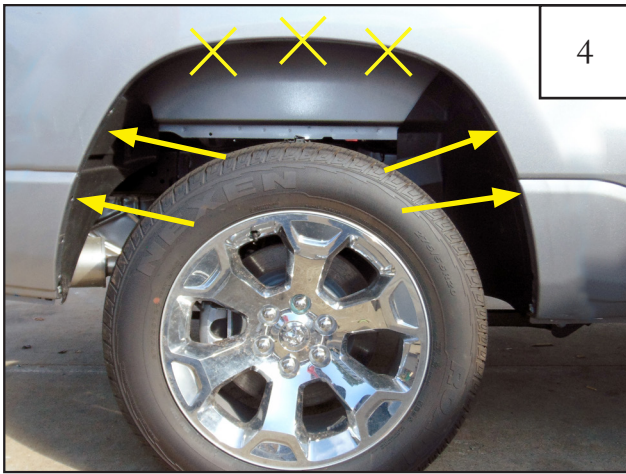
Remove and keep (2) factory installed screws, and remove mud flap from vehicle. These factory screws will be used to install the rear fender flare.



Remove and keep (1) factory installed screw, and remove mud flap from vehicle. This factory screw will be used to install the rear fender flare.

Trucks equipped with fender liners go to Step 9. Trucks equipped with fender liners will have (3) factory screws at the top of the fender.

Trucks without this type of fender liner continue to Step 4.



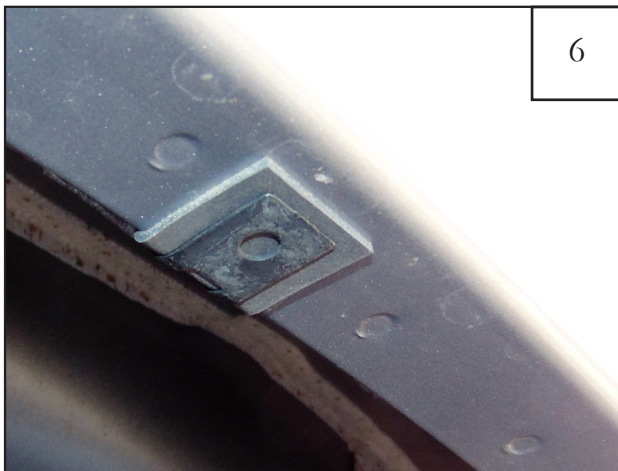
4

Remove (4) factory installed screws using an 8mm socket wrench. Keep screws for installation of the rear flare. X's indicate an existing factory hole that is empty.



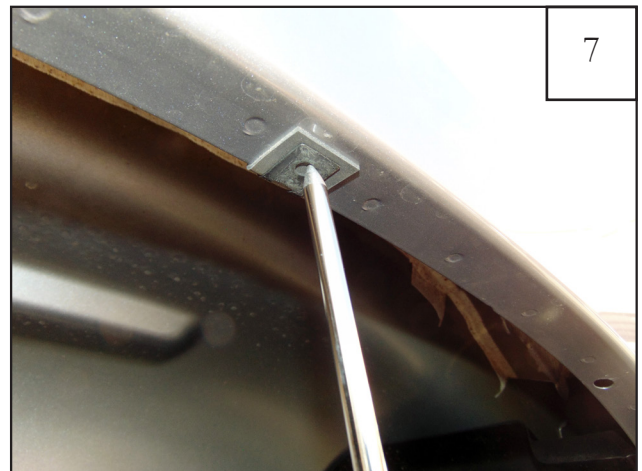
5

Install supplied Tab (MT1-0014) over existing factory hole.



6

Install supplied Clip (CL1-0022) over Tab (MT1-0014).



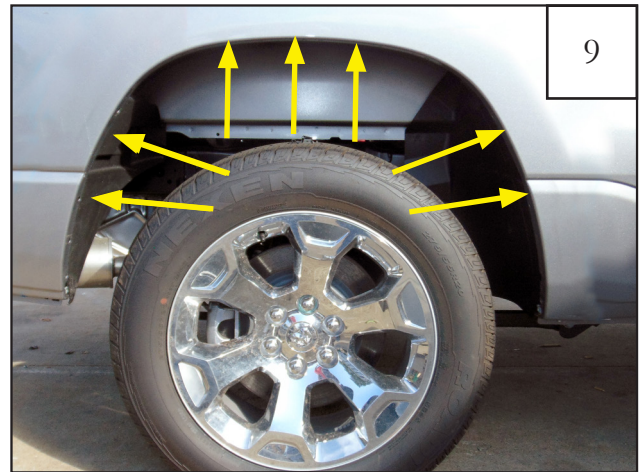
7

Using an awl or similar pointed tool, poke a hole through Tab (MT1-0014) using the Clip (CL1-0022) hole as a guide. Repeat Steps 5-7 for remaining (2) empty hole locations.



8

Hold flare in place and start Screw (SW1-0056) using a Phillips screwdriver in (3) locations as shown. *Do not tighten.* **Continue to Step 11.**



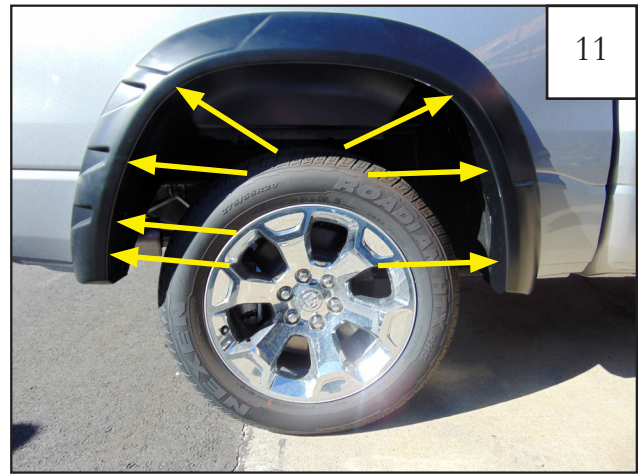
9

Remove and keep (7) factory installed screws.



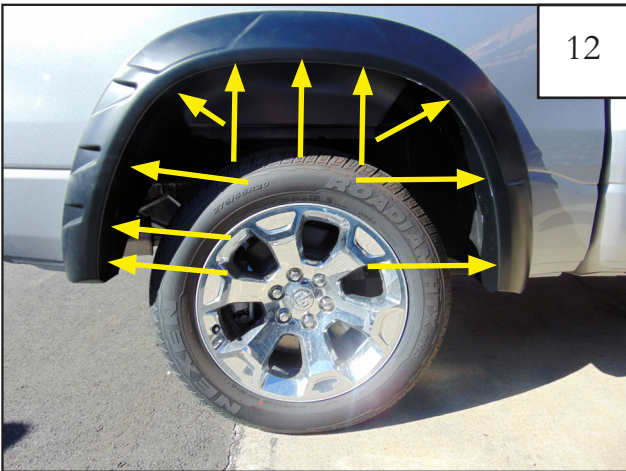
10

Hold flare in place and reinstall (3) factory screws removed in Step 9. *Do not tighten.*



11

Continue holding flare in place while you start re-installing (7) factory screws using an 8 mm socket wrench. *Do not tighten.*



12

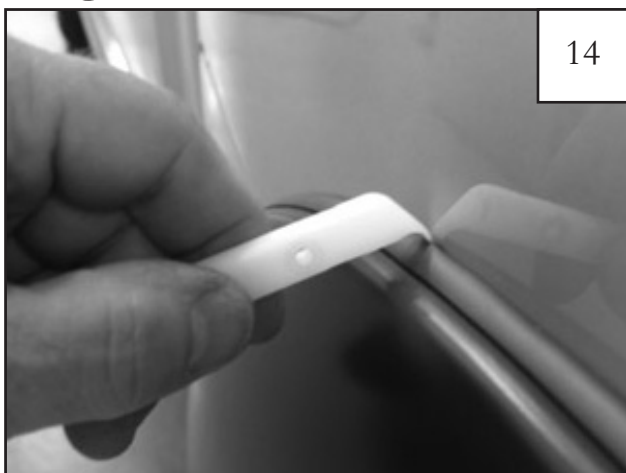
Press flare firmly against sheet metal and tighten all screws.



13

Completed rear flare installation.

## Edge Trim Tool Procedures:



14

Using supplied Edge Trim Tool (ET1-0002), seat edge trim against vehicle by hooking curved end under edge trim at one end of flare. Next, slide around outer edge of flare to the other end.



15

Using flat end of supplied Edge Trim Tool (ET1-0002), seat edge trim against flare by inserting straight end between edge trim and flare at one end. Next, slide around entire edge to the other end.