

# 99-03 [includes 04 Heritage] FORD F-150 Exhaust System Installation

**SuperCab 1999-2000** (without Intermediate Pipe hanger) **#14340**

**SuperCab 2001-2003 (includes '04 Heritage)** (with Intermediate Pipe hanger) **#14345**

**SuperCrew 2001-2003 #14350**

TOOLS/SUPPLIES NEEDED: Safety Glasses, 15mm wrench or deep socket, Torque wrench, Silicone spray or WD40, Level (optional)



Please be sure to review the attached instructions prior to beginning the installation process. If you have any questions about the enclosed parts, instructions or encounter a problem during installation, call CORSA Performance Technical Assistance at 800.486.0999. Do not attempt to make any modifications to parts as this will void your warranty.

**All TORCA clamps should be tightened using a properly calibrated Torque Wrench. Using an air impact gun will damage the clamp and reduce its ability to effectively seal the joint. It may also cause the joint to separate thereby causing damage to your exhaust system and your vehicle.**

## C A U T I O N

Prior to installation, be sure your vehicle is parked on a level surface and the exhaust system is cool. For safety purposes and ease of installation, we urge you to take your vehicle to a qualified service center or muffler installer that employs the use of a lift.

### Exhaust System Removal:

- 1) Using a 15mm socket or wrench, remove the U-bolt clamp from the Intermediate Pipe located directly in front of the Muffler (**See Fig aa & bb**).
- 2) Next, remove the Muffler hangers located at the rear of the Muffler from the rubber insulators (**See Fig A & B**) and the Tail Pipe (**See Fig C**).

NOTE: Use lubricate on all hangers and rubber insulators to facilitate removal.

- 3) On most models an Intermediate Pipe hanger is used. If your vehicle employs this hanger, remove it from the rubber insulator.

► **NOTE: Most 1999-2000 SuperCab and some earlier SuperCrew models did not employ an Intermediate Pipe hanger (see p. 3 for illustrations)**

- 4) With Muffler hangers now removed, there should be enough flex to separate the Muffler from the Intermediate Pipe.
- 5) Now exhaust system can be maneuvered and removed from vehicle.
- 6) After the system is removed, the Intermediate Pipe extension can now be removed from the vehicle (**See Fig cc**). >



FIG. aa



FIG. bb

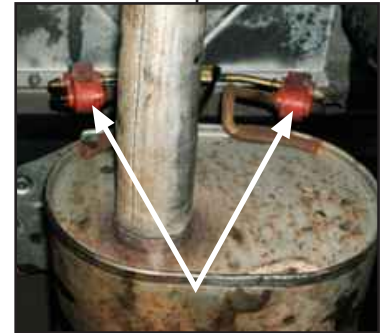


FIG. A



FIG. B

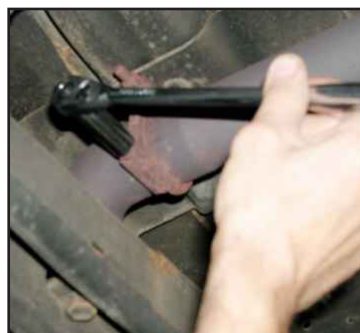


FIG. cc



FIG. C

## Exhaust System Installation:



### INSTALLATION NOTE:

Be sure to apply the anti-seize lubricant that has been provided to all bolts, fasteners and clamps. A pouch with anti-seize lubricant is included with the hardware kit. Apply the supplied anti-seize lubricant to the threads **ONLY** of all TORCA band clamps. Failure to follow this procedure can cause the nuts to seize on clamps and potentially damage threads.

**WARNING:** Be sure to thoroughly clean hands after use. Anti-seize lubricant will tarnish stainless steel parts.

- 1) Locate the Intermediate Pipe and slide a 2-1/2" TORCA clamp on the opposite end of the Intermediate Pipe hanger (See Fig D).
- 2) Position the Intermediate Pipe over outlet pipe (See Fig E) and snug fit the clamp (See Fig F).  
**NOTE: This model does not have an Intermediate Pipe frame hanger (See Fig G).**

- 3) Locate Muffler and slide a 3-inch TORCA clamp over the slotted or expanded inlet of muffler (See Fig H) and slide Muffler over Intermediate Pipe outlet (See Fig I) and snug fit clamp (See Fig J).

**NOTE: IMPORTANT-Make sure that the small drain or weep hole in rear of muffler faces down when muffler is installed (See Fig K).**

- 4) Locate Tail Pipe and slide a 3-inch TORCA clamp over inlet (See Fig L) then route it over axle housing (See Fig M) and slide on to Muffler outlet (See Fig N). Snug fit clamp.
- 5) Next insert the two Tail Pipe hangers (at the rear of muffler) into rubber insulators (See Fig O).
- 6) Insert the rear Tail Pipe hanger into rubber insulator (See Fig P).
- 7) Next tighten all clamps to TORCA clamp specification (See Fig Q) making sure there is enough clearance at each hanger and between muffler and frame.  
**Tighten all TORCA clamps to 45 LB.-FT.**
- 8) Locate Dual Tip Assembly and slide a 3-inch TORCA clamp on inlet (See Fig R) and slide over Tail Pipe (See Fig S).
- 9) Before tightening Tip clamp, check alignment of tips using a level and be sure to allow enough clearance between top of Tip Assembly and the body panel. Make necessary adjustments, including fore and aft, and tighten clamp. **Tighten all TORCA clamps to 45 LB.-FT.**



FIG. D



FIG. E



FIG. F



FIG. G



FIG. J



FIG. I



FIG. H

10) It is MANDATORY that all clamps be checked and tightened if necessary after road testing the vehicle and after system has cooled.



FIG. K



FIG. L



FIG. M



FIG. N



FIG. O



FIG. P

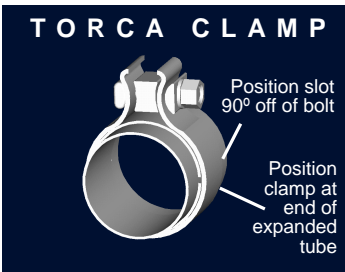


FIG. Q



FIG. R



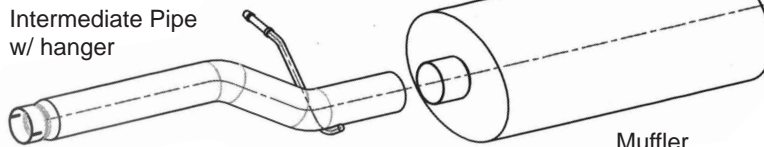
FIG. S

**NOTE:** During cold weather start-ups, you may experience an exhaust sound that is deeper and louder in tone than usual. This is temporary and will diminish to normal levels once your engine has reached its normal operating temperature.

**NOTE:** Immediately following the installation of your CORSA exhaust system, you may experience a trace of smoke after initial start-up. DO NOT be alarmed. The smoke is caused by the burning of a small amount of forming oil residue used in the manufacturing process.

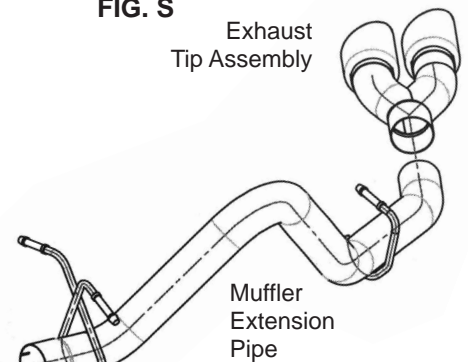


Intermediate Pipe w/ hanger



Muffler

Intermediate Pipe without hanger



Exhaust Tip Assembly

Muffler Extension Pipe

Clamps

