



IMPORTANT WARRANTY & INSTALLATION INSTRUCTIONS ATTACHED

*Please Forward All Attached Information to Consumer
Warranty Not Valid Unless Returned to CORSA Exhaust*

We ask that you take a few moments to complete our warranty registration form:

TO ACTIVATE YOUR LIMITED LIFETIME WARRANTY GO TO:

CORSAPERFORMANCE.COM/WARRANTY



For Full-Color Installation Instructions, Please Visit:

CORSAPERFORMANCE.COM and Search by Part Number

Please be sure to review the enclosed instructions prior to beginning the installation process.
If you have any questions about the enclosed parts, instructions or encounter a problem during
Installation: **CALL CORSA PERFORMANCE TECHNICAL ASSISTANCE AT
800.486.0999**

Please take time to read and understand these installation instructions.

CORSA recommends that installation of this system be performed by a qualified service center or professional muffler installer who has the necessary equipment, tools and experienced personnel. However, if you decide to perform this install, the use of a hoist and an additional person will be required.

CAUTION: Never work on a hot exhaust system. Allow time for the vehicle to cool. Always wear eye protection when working under a vehicle.

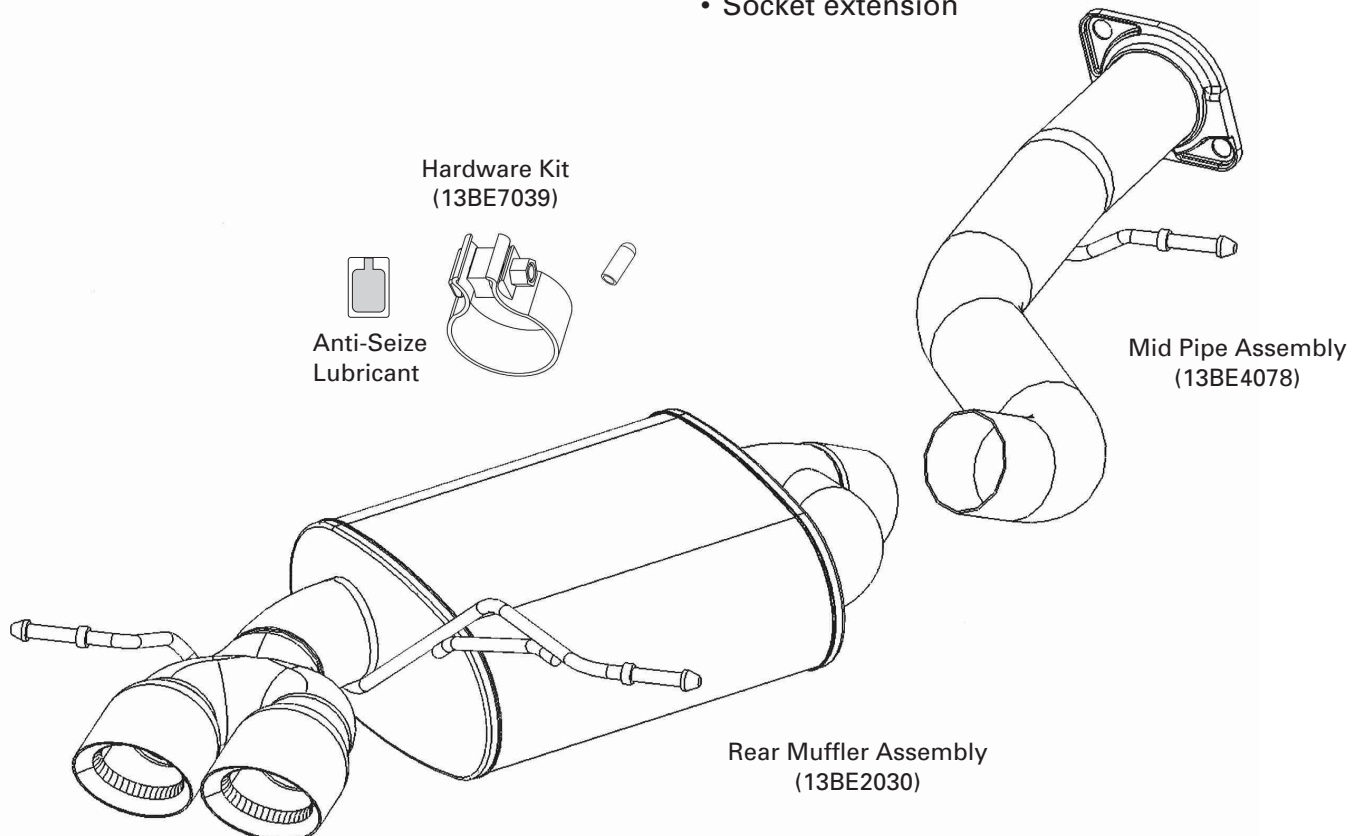
Please confirm that all parts are present before beginning the factory exhaust system removal and CORSA exhaust system installation.

Bill of Materials:

- Rear Muffler Assembly (13BE2030)
- Mid Pipe Assembly (13BE4078)
- Hardware Kit (13BE7039)
- Packet of Anti-Seize Lubricant

Recommended Tools:

- Safety Glasses
- 10mm, 8mm, 14mm & 15mm sockets
- Torque wrench
- Soap & water solution
- Socket extension



Removal of Stock System:

1. Using a 14mm socket or wrench, remove the 2 spring bolts from the flange forward of the axle (**See Fig. A**). Retain the bolts, springs, and gasket as they will be reused when installing the new exhaust.
2. Locate the vacuum line that actuates the valve near the driver side tip, and pull the line out of the valve (**See Fig. B**). Use the vacuum cap supplied in the hardware kit to cap the line and tuck it out of sight.
3. Using a hanger puller or similar device, remove the hanger closest to the flange from the rubber grommet (**See Fig. C**).

Note: The use of soapy water may aid in the removal and re-installation of the hangers through the rubber grommets.

4. The front of the muffler section is now free, so place a support under it to avoid damage to the rear bumper caused by the tips swinging upward (**See Fig. D**).
5. Remove the rear hanger from the grommet on the passenger side of the rear muffler (**See Fig. E**), and the hanger on the driver side (**See Fig. F**).

Note: These hangers are tucked behind the rear fascia and may be difficult to access without loosening the fascia. It does not have to be completely removed, but if the black 8mm screws are removed around the factory muffler (**See Fig. G**), and the 10mm bolt next to the rear muffler (**See Fig. H**), the plastic can be pulled down to give extra clearance to remove the muffler.

6. Once the 2 rear hangers are free, the stock muffler section can be removed.



FIG. A



FIG. B



FIG. C

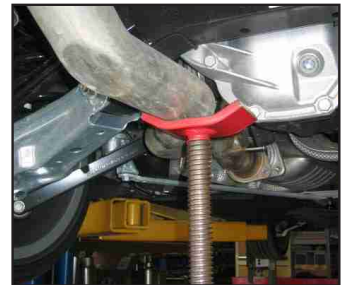


FIG. D



FIG. E



FIG. F



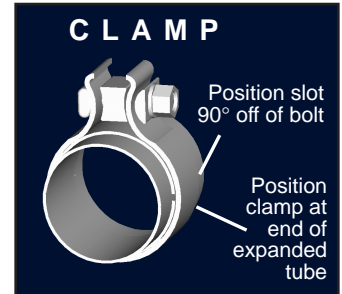
FIG. G



FIG. H

Installation of CORSA Exhaust System:

NOTE: Apply the anti-seize lubricant (supplied) to the threads **ONLY** of all the clamps and flange bolts. Failure to follow this procedure can cause nuts to seize on clamps and potentially destroy threads. After applying anti-seize lubricant, be sure to thoroughly clean hands as lubricant will tarnish stainless steel. All clamps should be tightened using a properly calibrated Torque Wrench. Using an air impact gun will damage the clamp and reduce its ability to effectively seal the joint. It may also cause the joint to separate thereby causing damage to your exhaust system and your vehicle.



1. Locate the new rear muffler assembly and install the passenger (See Fig. I) and driver (See Fig. J) hangers into the factory rubber grommets.
2. Slide the supplied clamp over the inlet of the muffler as shown (See Fig. K), and insert the outlet of the mid-pipe into the expansion. Do not tighten the clamp at this point.
3. Insert the hanger closest to the flange into the factory rubber grommet (See Fig. L).
4. Re-install the factory round gasket and align the flanges. Tighten the spring bolts through the flange. Alternate between the two spring bolts to correctly seal the joint (See Fig. M).
5. Align the tip in the bumper cutout for even clearance from side to side. Adjustments can be made at the clamp joint. When the tips are in the desired position, torque the clamp to 45 ft/lbs. (See Fig. N).
6. It is **STRONGLY SUGGESTED** that the clamp joint be checked and tightened if necessary after road testing the vehicle once the system has cooled.

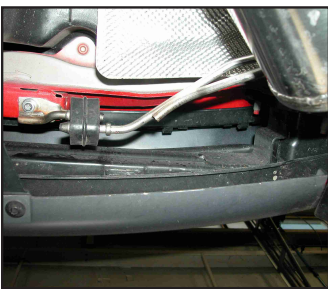


FIG. I

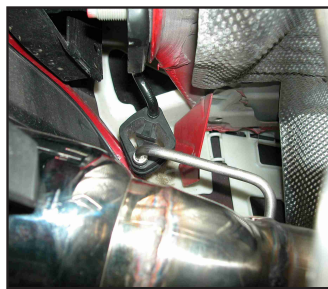


FIG. J

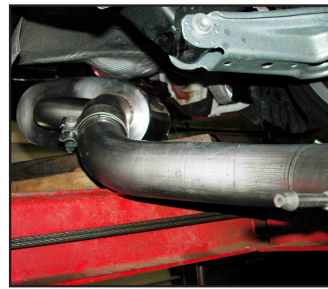


FIG. K

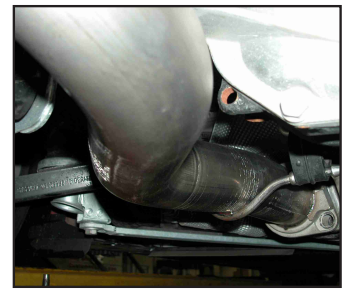


FIG. L

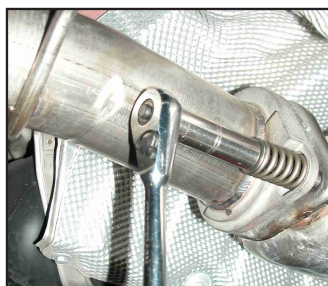


FIG. M



FIG. N

For Technical
Assistance, Please
Call (800) 486.0999.