



IMPORTANT WARRANTY & INSTALLATION INSTRUCTIONS ATTACHED

*Please Forward All Attached Information to Consumer
Warranty Not Valid Unless Returned to CORSA Exhaust*

We ask that you take a few moments to complete our warranty registration form:

TO ACTIVATE YOUR LIMITED LIFETIME WARRANTY GO TO:

CORSAPERFORMANCE.COM/WARRANTY



For Full-Color Installation Instructions, Please Visit:

CORSAPERFORMANCE.COM and Search by Part Number

Please be sure to review the enclosed instructions prior to beginning the installation process.
If you have any questions about the enclosed parts, instructions or encounter a problem during
Installation: **CALL CORSA PERFORMANCE TECHNICAL ASSISTANCE AT
800.486.0999**

Please take time to read and understand these installation instructions.

We recommend that the installation of this system be performed by a qualified service center or professional muffler installer who has the necessary equipment, tools and experienced personnel. However, if you decide to perform this install, the use of a hoist and an additional person will be required.

CAUTION: Never work on a hot exhaust system. Allow time for the vehicle to cool. Always wear eye protection when working under a vehicle.

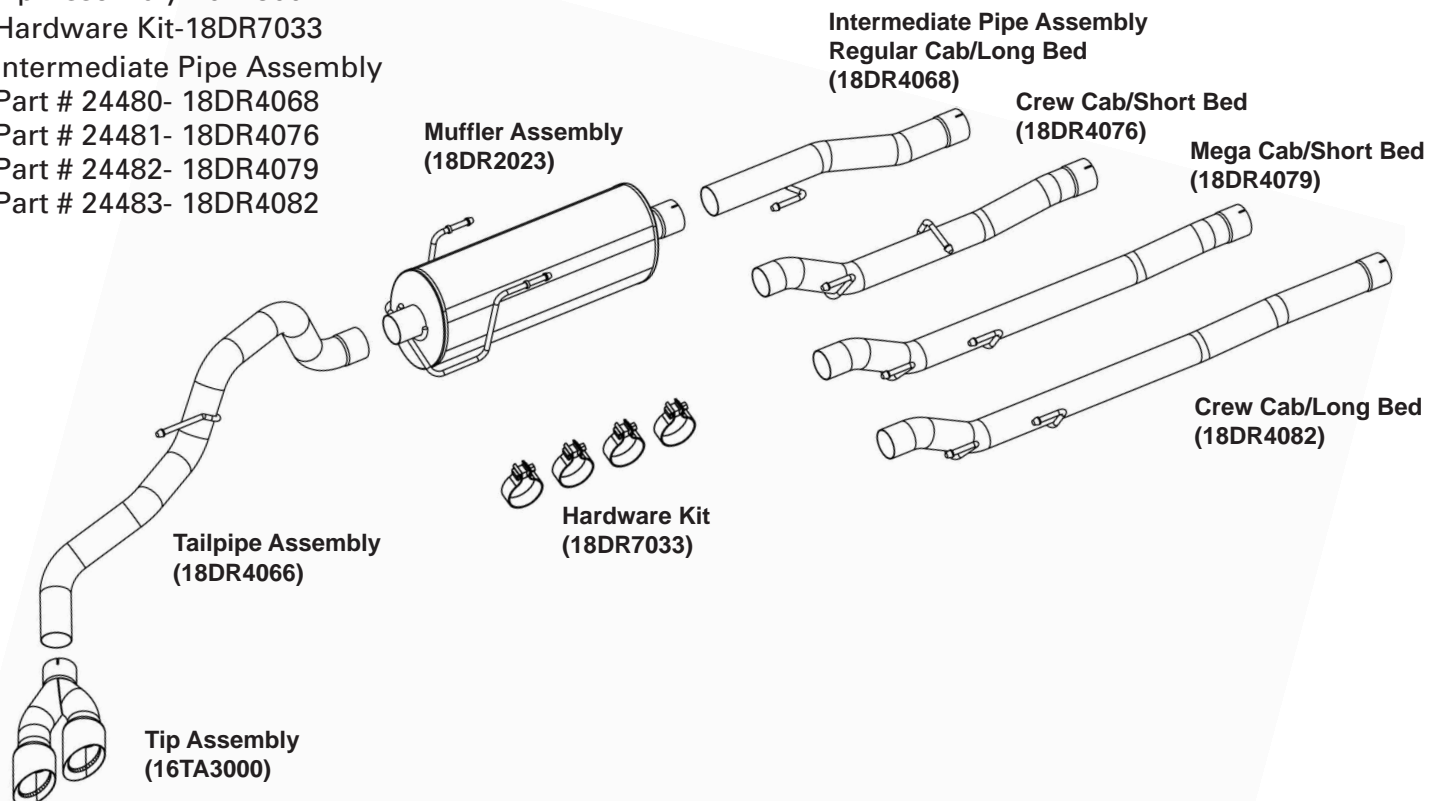
Please confirm that all parts are present before beginning the factory exhaust system removal and CORSA Performance Exhaust system installation.

Recommended Tools:

- Safety Glasses
- 15mm Socket
- 3/8" Ratchet
- Grommet Pullers
- Torque Wrench
- Soap & Water Solution

Bill of Materials:

- Muffler Assembly-18DR2023
- Tailpipe Assembly-18DR4066
- Tip Assembly-20FF3004
- Hardware Kit-18DR7033
- Intermediate Pipe Assembly
 Part # 24480- 18DR4068
 Part # 24481- 18DR4076
 Part # 24482- 18DR4079
 Part # 24483- 18DR4082



Removal of Stock Exhaust System:

1. Using a 15mm socket, loosen the factory clamp connecting the Intermediate pipe to the factory headpipe.
NOTE: The use of a soapy water solution may aid in the removal and later installation of the hangers in the rubber isolators. (See Fig. A).
2. Using a grommet puller or similar device, remove the Intermediate pipe, muffler and tailpipe hangers. Be sure to remove the grounding strap from the factory muffler before removing the system from the vehicle. (See Fig. B, C & D).
3. Remove the system over the axle towards the front of the vehicle. (See Fig. D) The removal of the factory system is complete.



FIG. A

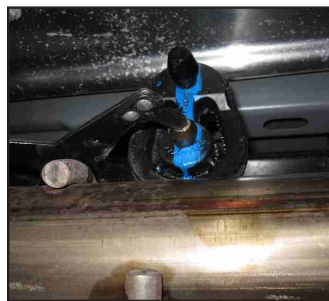


FIG. B

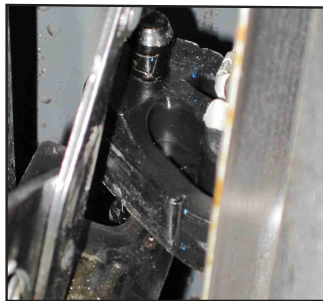


FIG. C

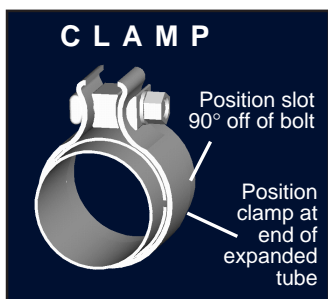


FIG. D

Installation of CORSA Exhaust System:

NOTE: Apply the anti-seize lubricant (supplied) to the threads **ONLY** of all the clamps and flange bolts. Failure to follow this procedure can cause nuts to seize on clamps and potentially destroy threads. After applying anti-seize lubricant, be sure to thoroughly clean hands as lubricant will tarnish stainless steel.

All clamps should be tightened using a properly calibrated Torque Wrench. Using an air impact gun will damage the clamp and reduce its ability to effectively seal the joint. It may also cause the joint to separate thereby causing damage to your exhaust system and your vehicle.



NOTE: IMPORTANT:
Make sure that the weep holes in the muffler are facing down.

Continue to step 1 on page 3 for the installation process.

- 1) Locate the Intermediate pipe and slide a 3" clamp over the expanded end of the pipe. Slide the expanded end of the pipe onto the factory pipe. Next, slide the hangers through the rubber grommets. Pre-tighten the clamp at this time. Leave the clamp loose enough for final adjustment later. **(See Fig's E & F).**
- 2) Locate the muffler and place a 3" clamp on the expanded end of the muffler. Slide the muffler onto the end of the Intermediate pipe. **(See Fig's G, H & I).** Make sure the weep holes in the muffler are facing down. Slide the two rear rubber grommets onto the muffler hangers as shown. Pre-tighten the clamp at this time.

Note: Spraying the rear grommet with a soap and water solution will make the installation easier.

- 3) Place a 3" clamp on the front of the tail pipe. Slide the hanger on the tail pipe through the grommet. Then slide the expanded end of the tail pipe onto the exit of the muffler. **(See Fig's J, K & L)** Pre-tighten the clamp at this time. Reinstall grounding strap.
- 4) Slide a 3" clamp over the tip assembly and place the tip assembly onto the end of the tail pipe. Align the tips so that there is about a one-half to one inch gap between the top of the tips and the bottom of the body panel with logos facing up. Pre-tighten the clamp at this time. **(See Fig M)**
- 5) **Starting from the front of the truck, tighten all clamps to 35 ft.-lbs. and tip clamp to 45 ft.-lbs.**
- 6) It is **strongly suggested** that all clamps be checked and tightened after road testing the vehicle once the system has cooled.



FIG. E



FIG. F



FIG. G

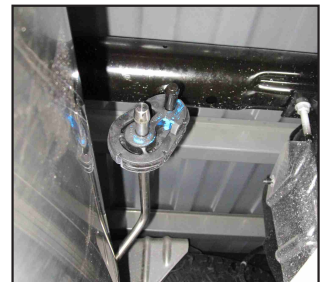


FIG. H

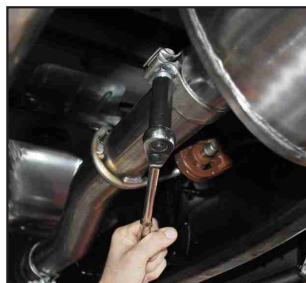


FIG. I



FIG. J



FIG. K



FIG. L

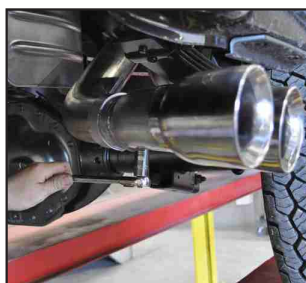


FIG. M

NOTE: During cold weather start-ups, you may experience an exhaust sound that is deeper and louder in tone than usual. This is temporary and will diminish to normal levels once your engine has reached its normal operating temperature. **NOTE:** Immediately following the installation of your exhaust system, you may experience a trace of smoke after initial start-up. **DO NOT** be alarmed. The smoke is caused by the burning of a small amount of forming oil residue used in the manufacturing process.