

09-17 NISSAN
GT-R

CORSA[®]
PERFORMANCE



IMPORTANT! WARRANTY AND INSTALLATION INSTRUCTIONS

Please Forward All Information to Consumer

Be sure to review the enclosed instructions prior to beginning the installation process. If you have any questions about the enclosed parts or instructions, or if you encounter a problem during installation:

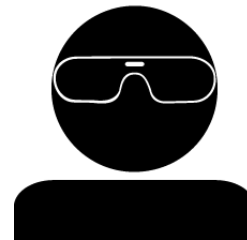
CALL TECHNICAL SUPPORT: 440.891.0999 or 800.486.0999

**TO ACTIVATE YOUR WARRANTY GO TO:
CORSAPERFORMANCE.COM/WARRANTY**

COLOR INSTRUCTIONS ARE AVAILABLE BY PART NUMBER ON: CORSAPERFORMANCE.COM



NEVER work on a hot exhaust system.
Allow time for the vehicle to cool.



**Always wear eye protection
when working under a vehicle.**

INSTALL DIFFICULTY 

RECOMMENDED TOOLS & SUPPLIES

- Clip Removal Tool
- 3/8" Ratchet
- 3/8" Drive Long Extension
- 3/8" Drive 10mm, 12mm, 14mm, 15mm, and 16mm Socket
- Soap and Water Solution
- Grommet Pullers
- 3/8" Drive Torque Wrench

NOTE: The rear underbody paneling and related bracketry must be removed to allow access to the factory exhaust system and its mounting locations. This is detailed in **Steps 1-6** of the removal process. **Set aside all mounting hardware to be reused during the installation process.**

2009-2017 NISSAN GT-R

3.5" Cat-Back, Dual Rear Exit w/ Quad 5.0" Titanium Tips

Part #: 14999, 14999BLK, 14999BRZ (Tip Kit: 14998, 14998BLK, 14998BRZ)



Please take time to read and understand these installation instructions.

CORSA recommends that the installation of this system be performed by a qualified service center or professional installer who has the necessary equipment, tools, and experienced personnel. However, if you decide to perform this installation yourself, the use of an additional person may be required.

WARNING: Never work on a hot exhaust system. Allow time for the vehicle to cool. Always wear eye protection when working under a vehicle.

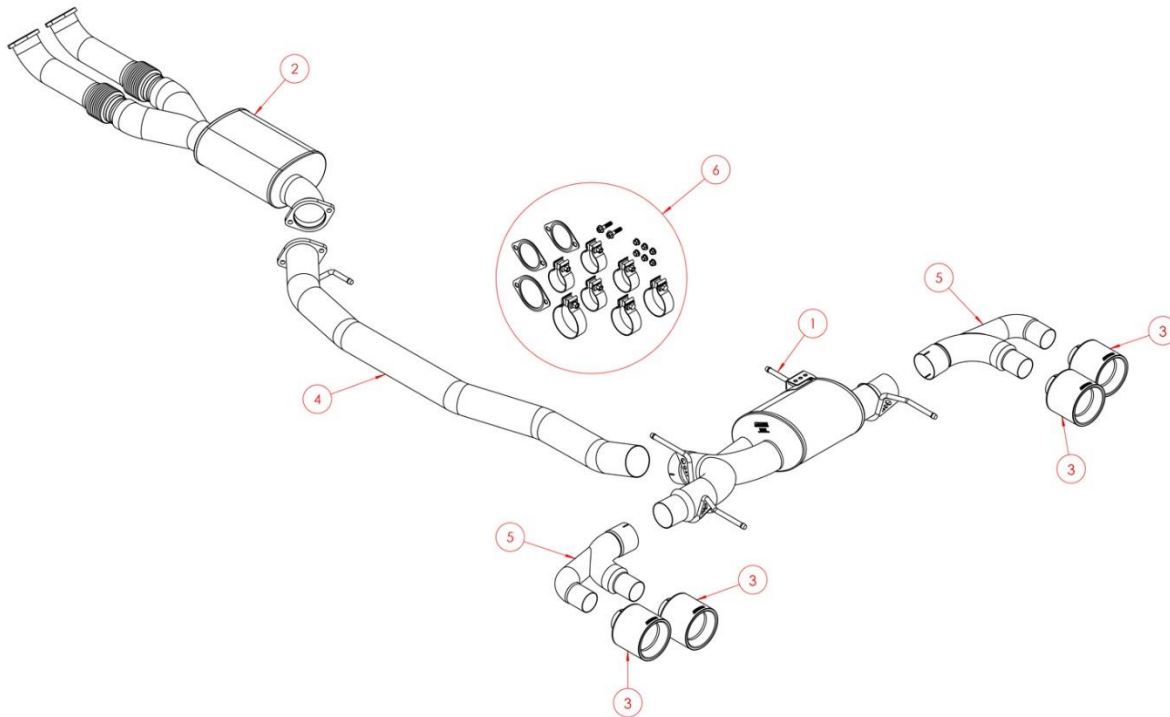
CORSA Performance makes no representation or warranty, expressed or implied that its downpipe or header products and or components there-in comply with federal, state or local emission levels, noise levels, or safety standards or that any of their parts conform with the racing vehicles exemption, unless otherwise noted. The purchaser assumes all responsibility for such use and compliance.

This warranty does not extend to damaged or defect in the finish of a product or to any product, that in the opinion of CORSA Performance, has been misused, damaged by accident or negligence, altered or modified in any way, faulty installation or installed contrary to CORSA installation instructions, or repaired by an unauthorized service facility.

Full warranty available on www.corsaperformance.com

Please confirm that all parts are present according to the bill of materials before beginning the installation.

If something is missing call Tech Support at 440.891.0999 or Toll Free: 1.800.486.0999



BILL OF MATERIALS

1.	Rear Muffler Assembly (24GZ2000)	2.	Midpipe Tunnel Muffler Assembly (24GZ2008)
3.	5.0" Titanium Clamp-On Tip (24GZ3000) (QTY 4)	4.	Axle-Pipe Assembly (24GZ4000)
5.	F-Pipe Assembly (24GZ4003) (QTY 2)	6.	Hardware Kit (24GZ7011)

CAUTION: Never work on a hot exhaust system. Allow the vehicle to cool for at least an hour and a half. Always wear eye protection when working under a vehicle. It is recommended to use cotton gloves in order to protect stainless steel surfaces from permanent grease and oil stains.

NOTE: The rear underbody paneling and related bracketry must be removed to allow access to the factory exhaust system and its mounting locations. This is detailed in **Steps 1-6** of the removal process. **Set aside all mounting hardware to be reused during the installation process.**

REMOVAL INSTRUCTIONS

FACTORY EXHAUST



1. Remove the 11 plastic clips on the center and side under paneling with a clip removal tool.



2. Remove the 15 larger sized bolts on the center under tray using a 12mm socket and ratchet.

Continued on Next Page ...

REMOVAL INSTRUCTIONS

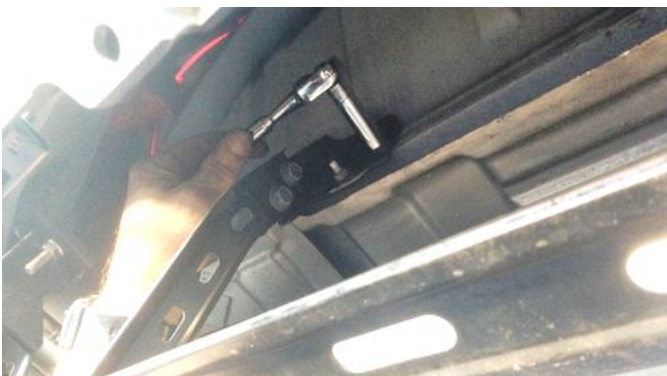
FACTORY EXHAUST



- 3.** Remove the 8 smaller sized bolts on the center under tray section using a 10mm socket and remove tray from the vehicle. **WARNING:** Carefully set the center under tray in a safe location until reinstalled.



- 4.** Start on the left side and remove the two larger sized under tray bolts using a 12mm socket and ratchet. Remove the one small bolt with a 10mm socket and ratchet and remove the left side under tray from the vehicle. Set aside in a safe location until reinstalled. Repeat on the right side under tray.



- 5.** Remove the four nuts securing the rear mounting brace with a 10mm socket and ratchet and remove it from the vehicle.

Continued on Next Page ...

REMOVAL INSTRUCTIONS

FACTORY EXHAUST



- 6.** Remove the 4 nuts securing the left and right mounting braces (2 per side) using a 12mm socket and ratchet, and remove from vehicle.



- 7.** Loosen the clamps on the stock tips using a 12mm socket and ratchet. Carefully remove each of the four stock tips from the rear valence.



- 8.** Remove the bolt on the center underbody panel closest to the tunnel exhaust hanger using a 12mm socket and ratchet. Save bolt for **Install Step 8.**



- 9.** Remove the two nuts securing the tunnel exhaust hanger grommet to the chassis (save for **Install Step 6**) using a 12mm socket and ratchet. **NOTE:** The use of a soapy water solution may aid in the removal and later installation of the hangers in the rubber isolators.

Remove the hanger grommet from the hanger using grommet pullers or similar device. Note the orientation of the hanger grommet prior to removal and set aside the grommet and mounting hardware for **Install Step 1.**

WARNING: Support the underside of the factory tunnel and rear mufflers using adjustable support stands. The entire stock exhaust will droop down once the rear muffler hanger mounts are unbolted from the chassis.



Continued on Next Page ...

REMOVAL INSTRUCTIONS

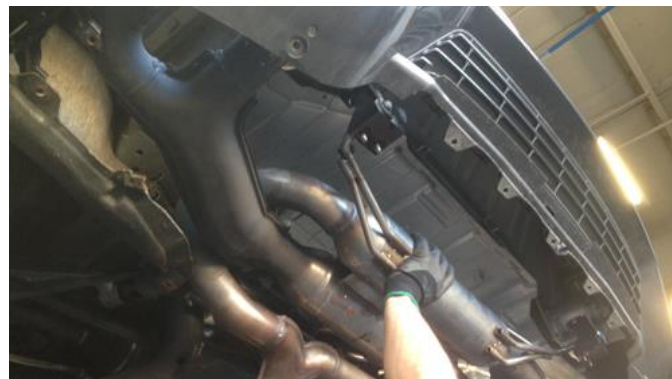
FACTORY EXHAUST



10. Remove the two nuts at the center exhaust flange using a 14mm socket and ratchet.



11. Remove the two nuts securing each of the exhaust hanger grommets to the chassis just in front of the rear muffler using a 12mm socket and ratchet, and a long extension. **Save Nuts for Install Step 7.**



12. **The use of a second person is recommended.** Remove the two nuts securing each of the exhaust hanger grommets just behind the rear muffler to the chassis using a 12mm socket and ratchet, and a long extension. Carefully remove the rear exhaust section by sliding it rearward off the studs on the front exhaust section. Let the exhaust drop down to free the hanger grommets, then move the entire rear section forward and down to free it from the vehicle. **Save Nuts for Install Step 7.**



13. Remove the two nuts at each of the front exhaust flanges using a 14mm socket and ratchet, and a long extension. Carefully remove the front exhaust section by sliding it rearward and down off the studs from the stock downpipe to free it from the vehicle.

Continued on Next Page ...

REMOVAL INSTRUCTIONS

FACTORY EXHAUST



- 14.** Remove each of the stock exhaust gaskets from the stock downpipes.



- 15.** Now that the cat-back exhaust is on the ground, remove the four rear grommet brackets from the factory hangers using grommet pullers or a similar device. Note the orientation of each hanger grommet before removal, the grommet bracket assemblies are not symmetric and have a front to back offset.

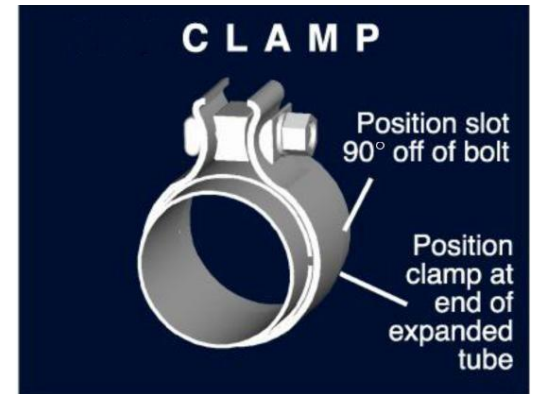
Step 15 concludes the removal of the factory exhaust.

WARNING! DO NOT SKIP THIS STEP!

Apply the anti-seize lubricant (*supplied*) to the threads **ONLY** of all the clamps and flange bolts. Failure to follow this procedure can cause nuts to seize on clamps and potentially destroy threads.

After applying anti-seize lubricant, be sure to **thoroughly** clean your hands, as lubricant will tarnish stainless steel.

All clamps should be tightened using a properly calibrated Torque Wrench. Using an air impact gun will damage the clamp and reduce its ability to effectively seal the joint. It may also cause the joint to separate, thereby causing damage to your exhaust system and to your vehicle.



NOTE: Align all clamps so that the center of the clamp bolt is 90 degrees from the notch in the pipe.

INSTALLATION INSTRUCTIONS

CORSA EXHAUST



1. Insert the CORSA axle pipe hanger into the rubber hanger grommet from **Removal Step 9** as shown.



2. Insert the CORSA rear muffler assembly hangers into the rubber hanger grommets from **Removal Step 15** as shown.



3. Pre-assemble the provided 3.5" clamp onto the inlet of the rear muffler assembly with the clamp hardware on the top side of the muffler inlet, and the nut facing towards the muffler case.

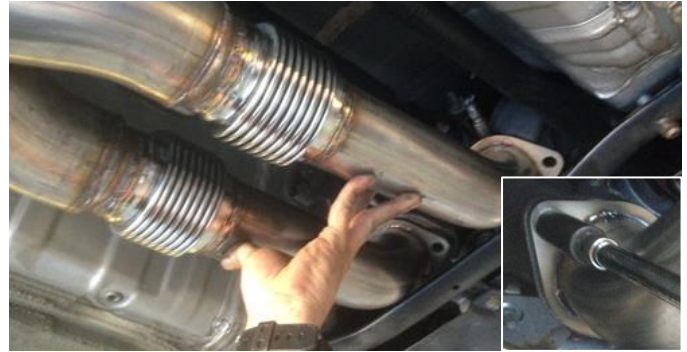
Continued on Next Page . . .

INSTALLATION INSTRUCTIONS

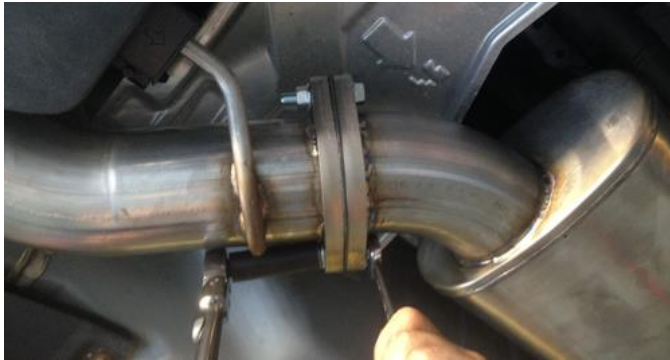
CORSA EXHAUST



- 4.** Install the provided replacement gaskets onto the stock downpipe flange connection studs.



- 5.** Install the CORSA tunnel muffler assembly onto the downpipe and secure both flanges with the provided M10 flange nuts using a 16mm socket and ratchet. Support the underside of the tunnel muffler with an adjustable support stand.



- 6.** Insert the CORSA axle pipe assembly and mount the tunnel hanger grommet to the vehicle's studs using the factory hardware from **Removal Step 9**. Install the supplied 3.5" gasket between the two flanges. Tighten the two sets of provided M10 bolts and nuts at the flange connection using a 15mm socket and 16mm wrench. Tighten the two nuts securing the hanger grommet using a 12mm socket and ratchet, and a long extension.



- 7.** Insert the CORSA rear muffler inlet onto the axle pipe outlet with at least 1.5" of overlap at the slip fit connection. Mount each of the rear hanger grommets to the vehicle's studs in the factory locations using the hardware from **Removal Step 11 & 12**. Tighten the two nuts securing each of the four hanger grommets using a 12mm socket and ratchet, and a long extension. Snug the clamp at the slip fit connection using a 15mm socket and ratchet.

Continued on Next Page ...

INSTALLATION INSTRUCTIONS

CORSA EXHAUST



- 8.** Reinstall the bolt from **Removal Step 8** on the center underbody panel closest to the tunnel exhaust hanger using a 12mm socket and ratchet.



- 9.** Slide a 3.0" clamp onto each of the CORSA F-Pipe inlets so the clamp hardware sits forward in the vehicle, and the nut is facing downwards.

Insert the F-Pipe inlet onto the muffler outlet with at least 1.5" of overlap at the slip fit connection.

Adjust the position and rotation the F-Pipe until the outlet pipes are centered in the factory rear valence cutouts. Snug the clamp at the slip fit connection using a 15mm socket and ratchet.



- 10.** Hold the CORSA 5.0" tip with the logo facing up and slide a provided 65mm clamp onto the inlet so the hardware is to the inside of the vehicle, and the nut is downwards.

Carefully install the tip onto the outer passenger side F-Pipe outlet with at least 1.5" of overlap at the slip fit connection. Adjust the position and rotation of the tip to center the logo on top with the desired amount of tip reveal.

Repeat for the second tip on the passenger side and snug both tips using a 15mm socket and ratchet.

Repeat for driver side.



- 11.** Visually inspect the exhaust system position, tip alignment, clamp orientation, and exhaust pipe clearance. Make any necessary adjustments at the slip joints and flange connections.

Start at the front of the vehicle and tighten all the nuts and clamps. Torque all hardware nuts at the three flange connections (downpipe and mid-section) to 22 ft-lbs.

Torque the muffler inlet (3.5" clamp) and the F-Pipe inlets (3.0" clamps) to 45 ft-lbs (61 N-m).

Hold the tips in the desired position and torque clamps to 45 ft-lbs (61 N-m).

Continued on Next Page ...

INSTALLATION INSTRUCTIONS

CORSA EXHAUST



12. Reinstall all the rear underbody paneling and related bracketry. Refer to **Removal Steps 1-6** for more details.

NOTE: During cold weather start-ups, you may experience an exhaust sound that is deeper and louder in tone than usual. This is temporary and will diminish to normal levels once your engine has reached its normal operating temperature.

NOTE: Immediately following the installation of your exhaust system, you may experience a trace of smoke after initial start-up. **DO NOT** be alarmed. The smoke is caused by the burning of a small amount of forming oil residue used in the manufacturing process.

NOTE: It is strongly suggested that all clamps be checked and tightened after road testing the vehicle once the system has cooled.