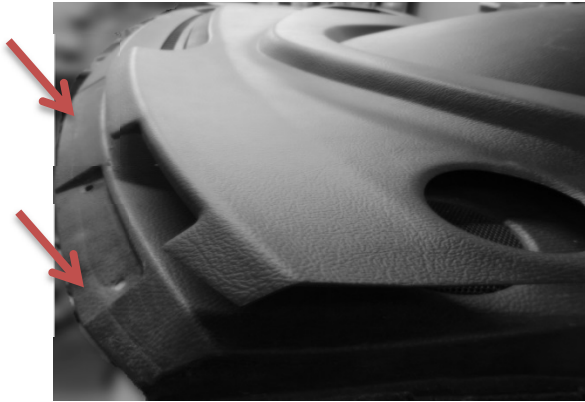




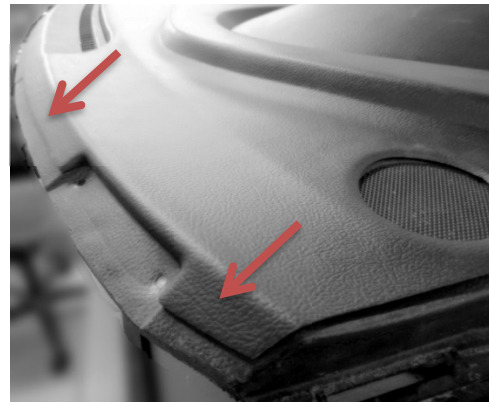
ADDITIONAL 30-408LL INSTALLATION INSTRUCTIONS

***IMPORTANT* PRIOR TO CHECKING THE FIT OF YOUR 30-408LL DASH COVER:**

1. Thoroughly clean your original dashboard with an ammonia based product such as Windex® to remove any oils or preservatives that have built up over the years. **DO NOT USE ARMOR ALL, ACETONE, PAINT THINNER OR ANY PETROLEUM BASED SOLVENTS FOR THIS MAY CAUSE COVER TO WARP OVER TIME.**
2. Remove any debris between the back of the dash and bottom of the windshield (2-a).



2-a



3-b

3. Make sure when applying dash cover for test fit and installation that the VIN portion of the dash cover is pushed all the way back and snapped in to place (3-b). Cover must lay flush or warping may occur.



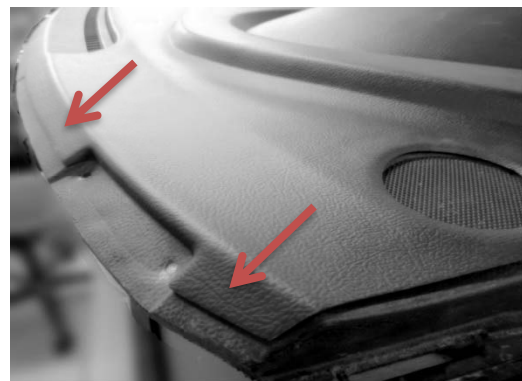
ADDITIONAL 30-408LL INSTALLATION INSTRUCTIONS

***IMPORTANT* PRIOR TO CHECKING THE FIT OF YOUR 30-408LL DASH COVER:**

1. Thoroughly clean your original dashboard with an ammonia based product such as Windex® to remove any oils or preservatives that have built up over the years. **DO NOT USE ARMOR ALL, ACETONE, PAINT THINNER OR ANY PETROLEUM BASED SOLVENTS FOR THIS MAY CAUSE COVER TO WARP OVER TIME.**
2. Remove any debris between the back of the dash and bottom of the windshield (1-a).



2-a



3-b

3. Make sure when applying dash cover for test fit and installation that the VIN portion of the dash cover is pushed all the way back and snapped in to place (3-b). Cover must lay flush or warping may occur.