

11010**93-99 VOLKSWAGEN JETTA III & WOLFBURG**

10/20/2020

GROSS LOAD CAPACITY WHEN USED AS A WEIGHT CARRYING HITCH: 2000 LBS. TRAILER WEIGHT & 200 LBS. TONGUE WEIGHT.

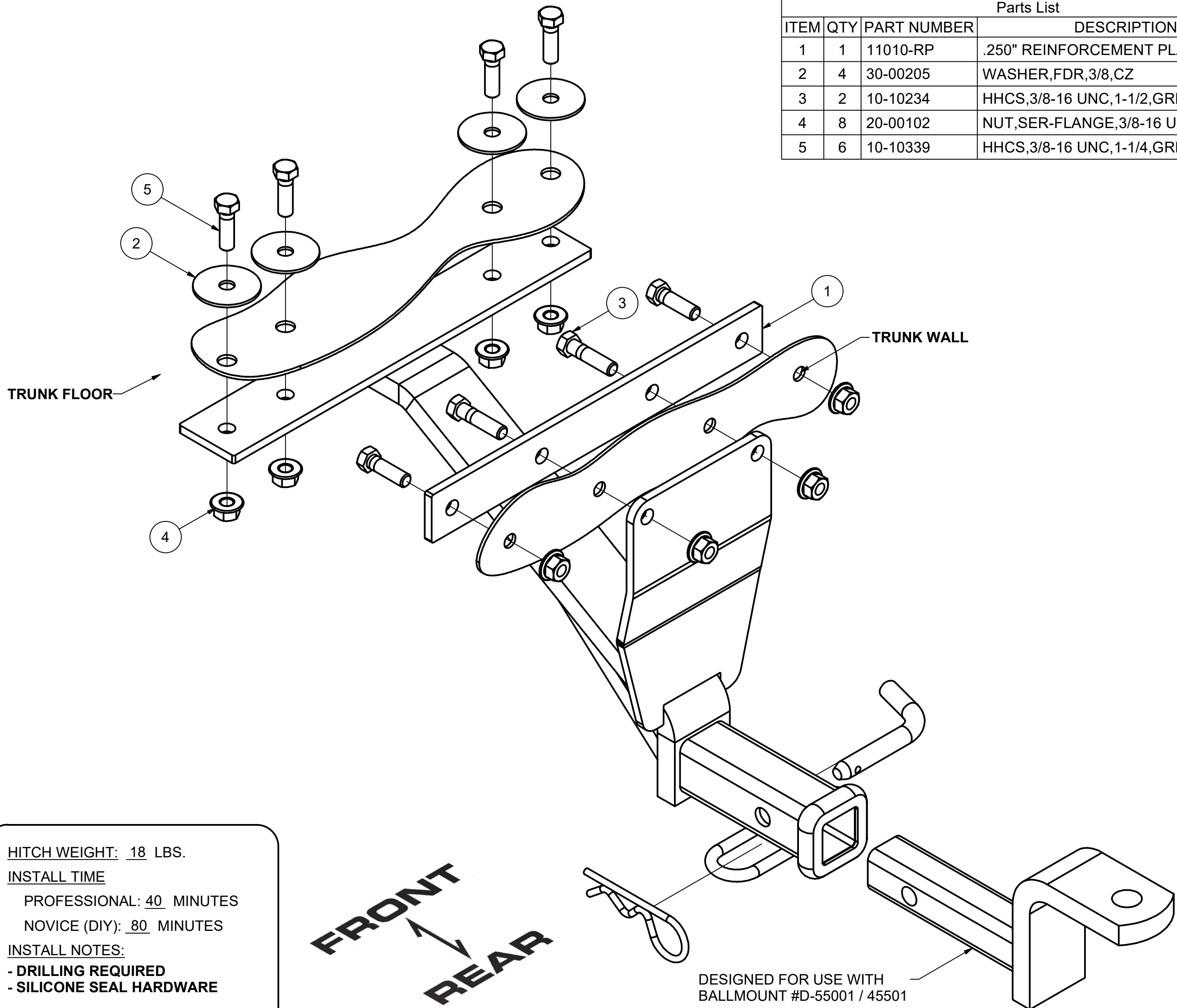
*****DO NOT EXCEED VEHICLE MANUFACTURER'S RECOMMENDED TOWING CAPACITY.*****

WARNING: ALL NON-TRAILER LOADS APPLIED TO THIS PRODUCT MUST BE SUPPORTED BY 18050 STABILIZING STRAPS.

**** FAILURE TO PROPERLY SUPPORT NON-TRAILER LOADS WILL VOID PRODUCT WARRANTY****

HAVING INSTALLATION QUESTIONS? CALL TECHNICAL SUPPORT AT 877-287-8634

Parts List			
ITEM	QTY	PART NUMBER	DESCRIPTION
1	1	11010-RP	.250" REINFORCEMENT PLATE
2	4	30-00205	WASHER,FDR,3/8,CZ
3	2	10-10234	HHCS,3/8-16 UNC,1-1/2,GRD8,YZ
4	8	20-00102	NUT,SER-FLANGE,3/8-16 UNC,GRD8,YZ
5	6	10-10339	HHCS,3/8-16 UNC,1-1/4,GRD8,YZ



HITCH WEIGHT: 18 LBS.

INSTALL TIME

PROFESSIONAL: 40 MINUTES

NOVICE (DIY): 80 MINUTES

INSTALL NOTES:

- DRILLING REQUIRED
- SILICONE SEAL HARDWARE

INSTALLATION STEPS

1. Open trunk, raise the floor mat, and mark the center of the car across on the inside of rear panel near floor level. Remove as much sealer material around corners as possible.
2. Locate reinforcement plate against rear panel and floor where sealer is removed. Holes for the hitch rear bracket will be drilled from inside the car. Center the backing plate and use as a template to drill four 13/32" holes in car's trunk wall. Install fasteners as shown. A small amount of bumper fascia may need to be cut.
3. Using the hitch as a template drill trunk floor through hitch mounting plate. Install fasteners as shown.
4. Torque all hardware to 45 ft.lbs.
5. Use silicone sealant to seal hardware installed through trunk wall.

PERIODICALLY CHECK THIS RECEIVER HITCH TO ENSURE THAT ALL FASTENERS ARE TIGHT AND THAT ALL STRUCTURAL COMPONENTS ARE SOUND.

Curt Manufacturing Inc., warrants this product to be free of defects in material and/or workmanship at the time of retail purchase by the original purchaser. If the product is found to be defective, Curt Manufacturing Inc., may repair or replace the product, at their option, when the product is returned, prepaid, with proof of purchase. Alteration to, misuse of, or improper installation of this product voids the warranty. Curt Manufacturing Inc.'s liability is limited to repair or replacement of products found to be defective, and specifically excludes liability for incidental or consequential loss or damage.