



INSTALLATION MANUAL

13632

Level of Difficulty

Easy

Installation difficulty levels are based on time and effort involved and may vary depending on the installer level of expertise, condition of the vehicle and proper tools and equipment.

Weight Carrying Capacity

Gross trailer weight (GTW) 3,500 lbs.

Tongue weight (TW) 350 lbs.

Parts List

Item	Qty	Description
1	1	Trailer hitch
2	5	Hex bolt, M12 – 1.25 x 30mm
3	5	Conical-toothed washer, 1/2"

Tools Required

Socket, 16mm Ratchet

Socket, 19mm Torque wrench

Socket extension, 10" --

* For a tools reference guide visit curtmfg.com/trailer-hitch-installation

Product Registration and Warranty

CURT stands behind our products with industry-leading warranties. To get copies of the product warranties, register your purchase or provide feedback, visit: warranty.curtgroup.com/surveys

⚠ WARNING

Never exceed the vehicle manufacturer's recommended towing capacity.

Product Photo



NOTICE

Visit www.curtmfg.com for a full-color copy of this instruction manual, as well as helpful videos, guides and much more!

Before you begin installation, read all instructions thoroughly.

Proper tools will improve the quality of installation and reduce the time required.

This installation requires:

- Part removal
- Trimming of the underbody panel.

Periodic inspection of the trailer hitch should be performed to ensure all mounting hardware remains tight and structural components are secure.

To help prevent damage to the product or vehicle, refer to the specified torque specifications when securing hardware during the installation process.

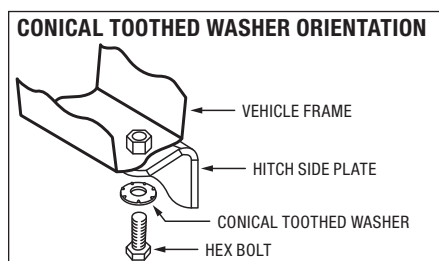
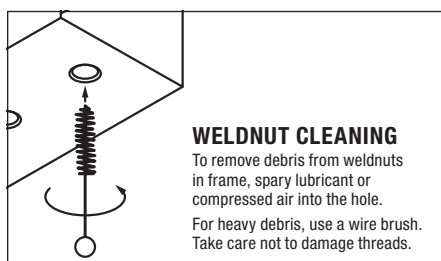
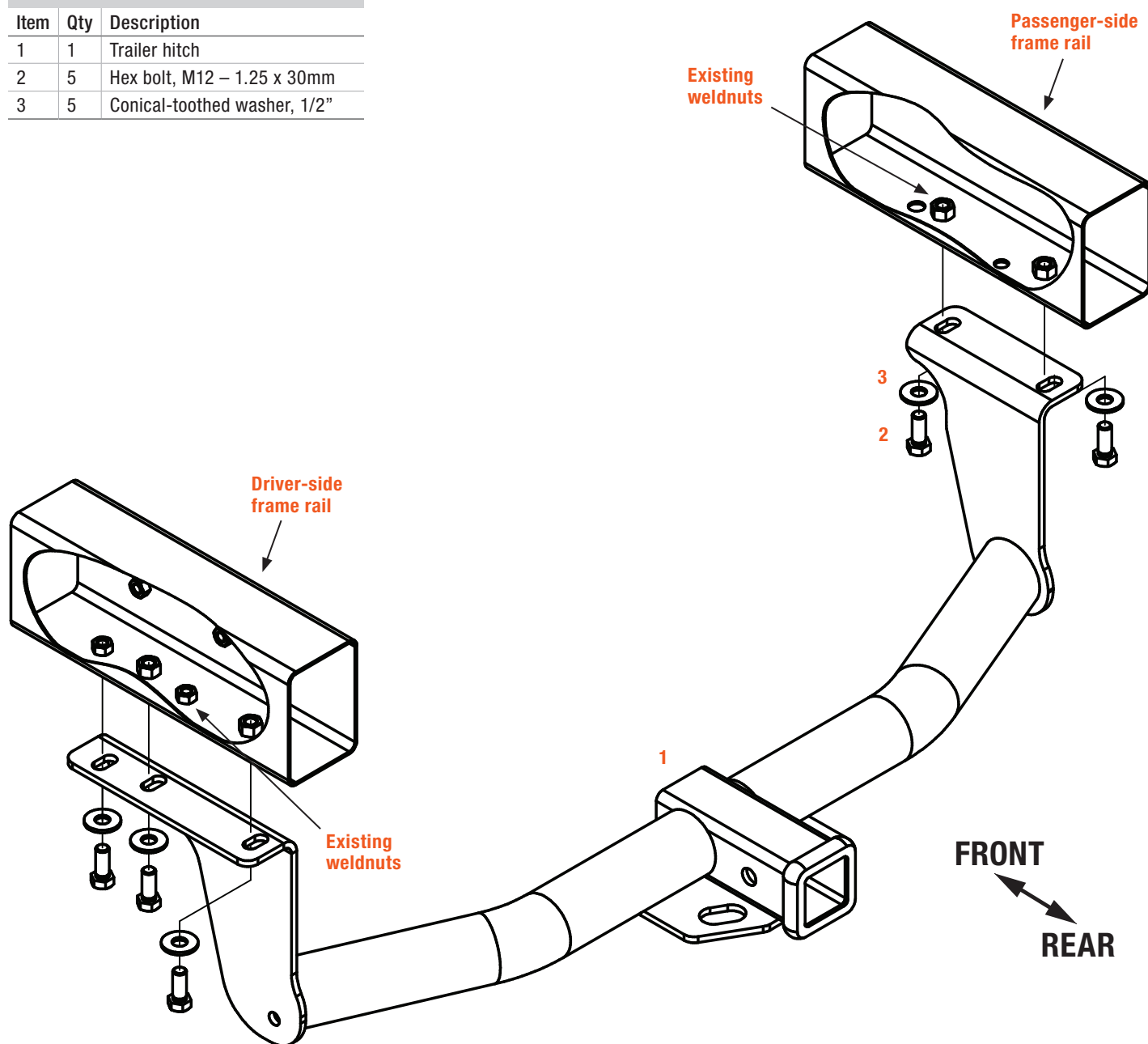
SAFETY INSTRUCTIONS

Safety glasses should be worn at all times while installing this product.

ASSEMBLY

Parts List

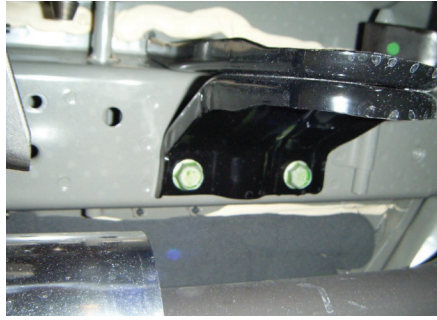
Item	Qty	Description
1	1	Trailer hitch
2	5	Hex bolt, M12 – 1.25 x 30mm
3	5	Conical-toothed washer, 1/2"



Step 1

If present, remove the four (4) bolts holding the tie down bracket onto the vehicle.

Return the hardware to the vehicle owner.



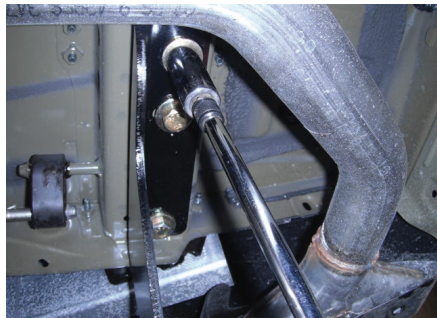
Step 2

Use a M12 bolt to clean the undercoating and debris from existing weldnuts if required.



Step 3

Raise the hitch into position between the exhaust tip(s) and attach the hitch to the vehicle with the supplied five (5) M12 bolts (#2) and five (5) 1/2" washers (#3).



Step 4

Torque all M12 hardware to 86 lb-ft.



Final Installed Image



TOWING BASICS & SAFETY INFORMATION

For information on safely towing your trailer, visit curtmfg.com/understanding-towing.