

INSTALLATION MANUAL

13636

Level of Difficulty

Moderate

Installation difficulty levels are based on time and effort involved and may vary depending on the installer level of expertise, condition of the vehicle and proper tools and equipment.

Weight Carrying Capacity

Gross trailer weight (GTW)	3,500 lbs.
Tongue weight (TW)	525 lbs.

Parts List

Item	Qty	Description
1	1	Trailer hitch
2	8	Hex bolt, M10 – 1.5 x 35mm
3	8	Conical-toothed washer, 3/8"
4	8	Flat washer, 7/16"

Tools Required

Ratchet	Drill bit, 1/2" or step
Socket, 16mm	Torque wrench
Socket, 17mm	Torx bit, T-15
Trim Panel Pry Tool	Torx bit, T-25
Drill	--

* For a tools reference guide visit curtmfg.com/trailer-hitch-installation

Product Registration and Warranty

CURT stands behind our products with industry-leading warranties. To get copies of the product warranties, register your purchase or provide feedback, visit: warranty.curtgroup.com/surveys

⚠ WARNING

Never exceed the vehicle manufacturer's recommended towing capacity.

SAFETY INSTRUCTIONS

Safety glasses should be worn at all times while installing this product.

Product Photo



NOTICE

Visit www.curtmfg.com for a full-color copy of this instruction manual, as well as helpful videos, guides and much more!

Before you begin installation, read all instructions thoroughly.

Proper tools will improve the quality of installation and reduce the time required.

This installation requires:

- Drilling bumper beam
- Bumper fascia removal

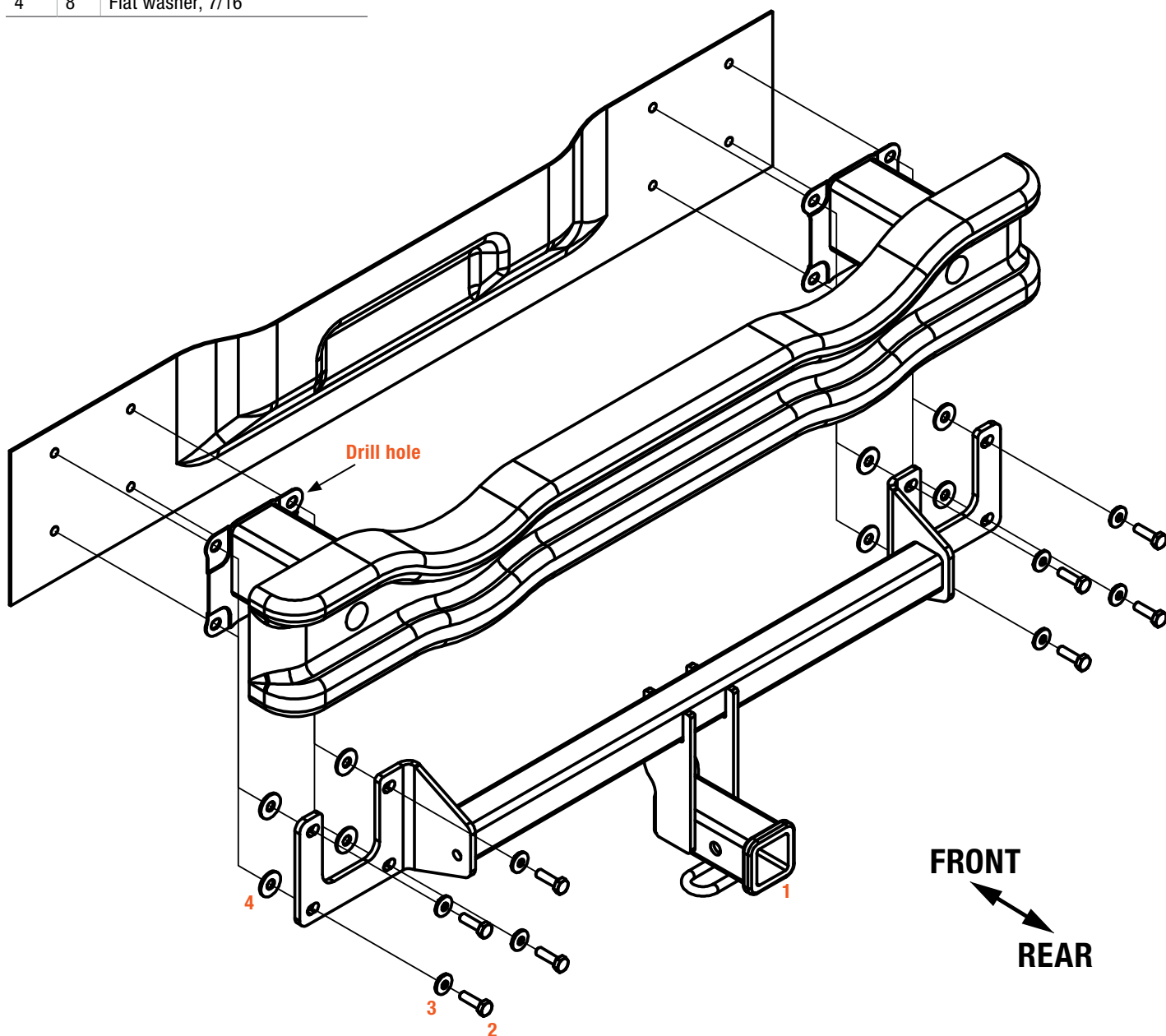
Periodic inspection of the trailer hitch should be performed to ensure all mounting hardware remains tight and structural components are secure.

To help prevent damage to the product or vehicle, refer to the specified torque specifications when securing hardware during the installation process.

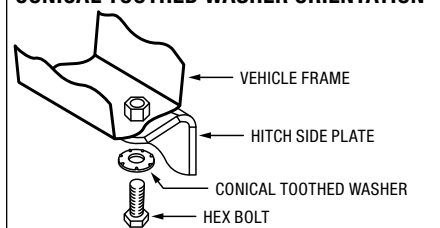
ASSEMBLY

Parts List

Item	Qty	Description
1	1	Trailer hitch
2	8	Hex bolt, M10 – 1.5 x 35mm
3	8	Conical-toothed washer, 3/8"
4	8	Flat washer, 7/16"

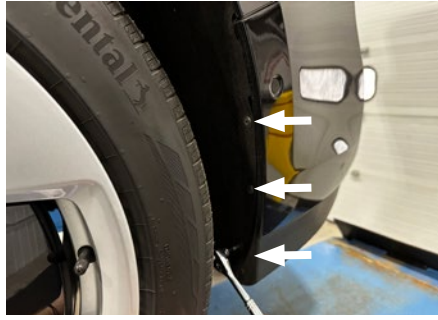


CONICAL TOOTHED WASHER ORIENTATION



Step 2

Using a T25 torx bit, remove the three (3) screws securing the wheel well liner to the fascia on both sides of the vehicle. Pull back the wheel well liner. Using a trim panel pry tool, remove the panel clip securing the top corner of the fascia on both sides.



Step 2

Using a T25 torx bit, remove the five (5) screws (circled) securing the underbody panel to the fascia. Using a T15 torx bit and a trim panel pry tool, remove the two (2) panel clips (arrows).

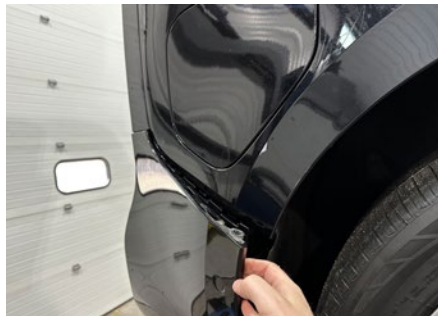
Note: Underbody panel removal is not required.



Step 3

Gently pry the bumper fascia starting from the sides near the wheel well and working towards the rear of the vehicle to release the clips holding the bumper fascia.

Carefully pull the bumper fascia away from the vehicle and disconnect the two (2) electrical connectors on the passenger side. Set the bumper fascia aside for later reinstallation.



Step 4

Using a 16mm socket, remove the seven (7) bolts securing the bumper beam.

Note: Return seven (7) bolts to vehicle owner.



Step 5

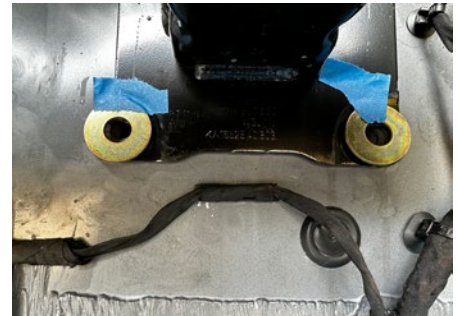
With the bumper beam removed, place the hitch over the bumper beam mounting plates, aligning the existing mounting hole. Mark and drill the missing mounting hole on the driver side of the bumper beam.



Step 6

Replace the bumper beam on the vehicle. Use tape to temporarily place eight (8) flat washers (#4) over the bumper beam mounting holes.

Raise hitch into position and using a 17mm socket, loosely secure it with eight (8) M10 bolts (#2) and conical washers (#3).



Step 7

Torque all M10 fasteners to 45 ft-lbs.

Reinstall the fascia following steps 1-3 in reverse order and placing the hitch receiver through the existing access hole in the bumper fascia.

