

INSTALLATION MANUAL

19284

Level of Difficulty

Moderate

Installation difficulty levels are based on time and effort involved and may vary depending on the installer level of expertise, condition of the vehicle and proper tools and equipment.

Weight Capacity

Vertical load	12,000 lbs.
---------------	-------------

Parts List

Item	Qty	Description
1	1	Acme threaded rod
2	1	Rod coupling nut

Tools Required

Ratchet	Socket set
Hammer	Punch

Product Registration

CURT stands behind our products with industry-leading warranties. Provide feedback and help us to improve our products by registering your purchase at: warranty.curtgroup.com/surveys

⚠ WARNING

Never exceed the vehicle manufacturer's recommended towing capacity. This may result in separation, damage to 5th wheel hitch, vehicle, trailer and / or cause serious injury or death.

Provide this entire installation manual to the end-user. Fully instruct and demonstrate the operation of this 5th wheel hitch to the end user. Include the importance of observing all warnings contained herein, including warning labels on 5th wheel hitch mid section. Serious injury or death may result if the warnings below are not observed.

Do not expose hands, body parts or clothing anywhere between the truck and trailer. Extreme care should be observed to avoid serious injury to self, property and observers.

Never position yourself or others under the trailer's kingpin area (danger zone) during coupling and uncoupling. Improperly coupled trailers can separate and drop without notice.

Product Photo



NOTICE

Before you begin installation, read all instructions thoroughly.

Proper tools will improve the quality of installation and reduce the time required.

To help prevent damage to the product or vehicle, refer to the specified torque specifications when securing hardware during the installation process.

Maintenance

To protect the product, wax after installing. Regular waxing is recommended to add a protective layer over the finish. Do not use any type of polish or wax that may contain abrasives that could damage the finish.

Mild automotive detergent may be used to clean the product. Do not use dish detergent, abrasive cleaners, abrasive pads, wire brushes or other similar products that may damage the finish.

ASSEMBLY

Parts List

Item	Qty	Description
1	1	Acme threaded rod
2	1	Rod coupling nut



Step 1

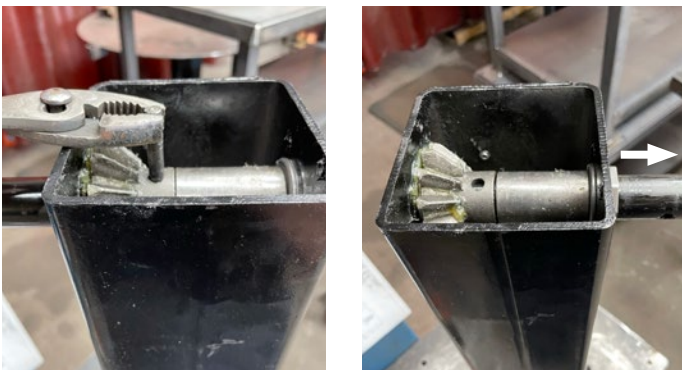
Remove the two fasteners securing the top cover to the jack assembly. Set fasteners and cover aside for reinstallation.



Step 2

With the cover removed, use a rag to wipe away any excess grease. Using a hammer and punch, remove the retaining pin securing the handle to the assembly.

With the pin removed, pull the handle out of the assembly and set it to the side.



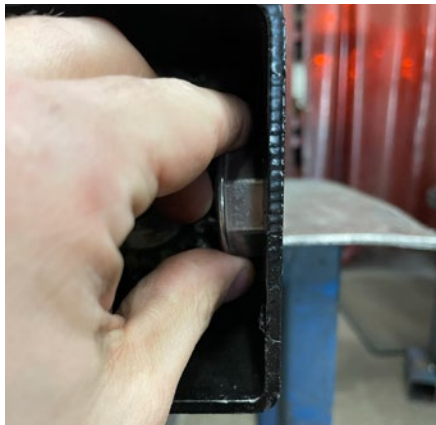
Step 3

With the handle removed, pull out the handle shaft and top gear.



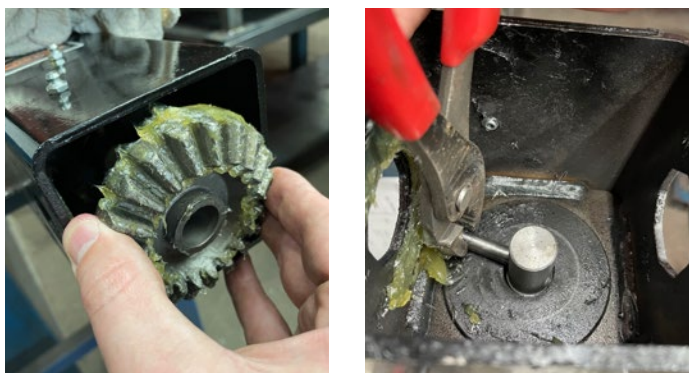
Step 4

Remove both handle bushings.



Step 5

Pull out the large gear and retaining pin.



Step 6

Remove the outer housing of the jack, exposing the four lock nuts securing the acme threaded rod and rod nut to the assembly.

Remove the four lock nuts and pull the threaded rod and rod nut out of the lower jack assembly.



Step 7

Insert the 19284 acme threaded rod (#1) and rod nut (#2) assembly into the lower jack assembly and reassemble the jack following steps 1 through 6 in reverse order.
