

# USER GUIDE

# 52203

## Level of Difficulty

Easy

Installation difficulty levels are based on time and effort involved and may vary depending on the installer level of expertise, condition of the vehicle and proper tools and equipment.

## Parts List

Item	Qty	Description
1	1	Bullseye wireless monitor
2	1	12-Volt dual USB charger
3	1	USB-C power cable
4	1	Range extender

## Product Registration and Warranty

CURT stands behind our products with industry-leading warranties. To get copies of the product warranties, register your purchase or provide feedback, visit: [warranty.curtgroup.com/surveys](http://warranty.curtgroup.com/surveys)

# ASSEMBLY

## Parts List

Item	Qty	Description
1	1	12-Volt dual USB-C charger
2	1	Screen
3	1	Lock nut
4	1	Bullseye Range Extender
5	1	USB-C power cable
6	1	Suction lock
7	1	Alligator clips
8	1	Suction mount

## WARNING

Avoid distracted driving. Only make adjustments when the vehicle is stationary. Please adhere to all applicable traffic laws and motor vehicle safety regulations including, but not limited to, all laws and regulations prohibiting the use of handheld devices while operating a motor vehicle.

## Product Photo

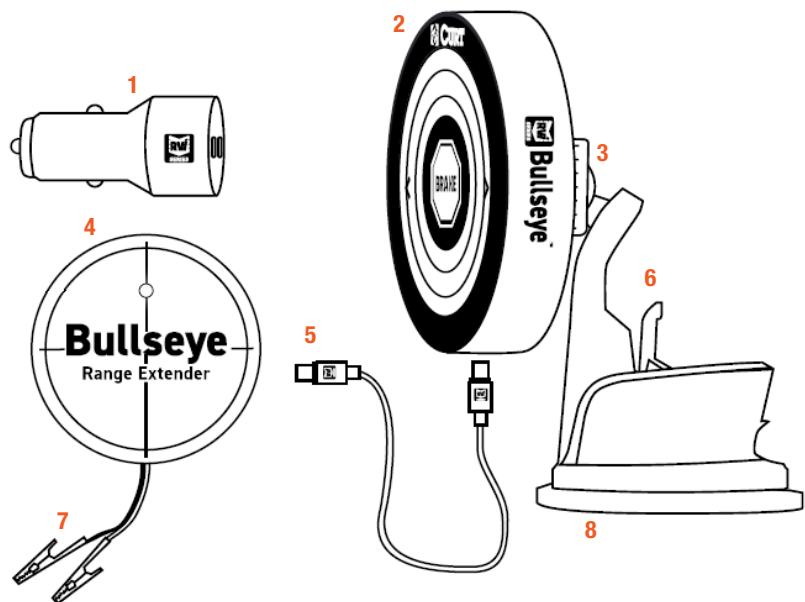


## NOTICE

Visit [www.curtmfg.com](http://www.curtmfg.com) for a full-color copy of this instruction manual, as well as helpful videos, guides and much more!

Before you begin installation, read all instructions thoroughly.

Proper tools will improve the quality of installation and reduce the time required.



# INSTALLATION

## Setting up the Bullseye

The Suction Mount can be mounted to glass or plastic. Before mounting, clean surface of dust and debris.

1. Peel protective cover from 3M suction cup and press firmly in your preferred location.
2. Snap down the suction lock lever.
3. Adjust the screen surface in the direction of choice and tighten the threaded lock nut securely.
4. Plug the USB-C cable into the Bullseye and the 12-volt dual USB-C charger.
5. Plug the 12-volt dual USB-C charger into a 12-volt outlet on or near the dash.
6. If the 12-volt outlet is not live at all times, the engine may need to be running to power the Bullseye.

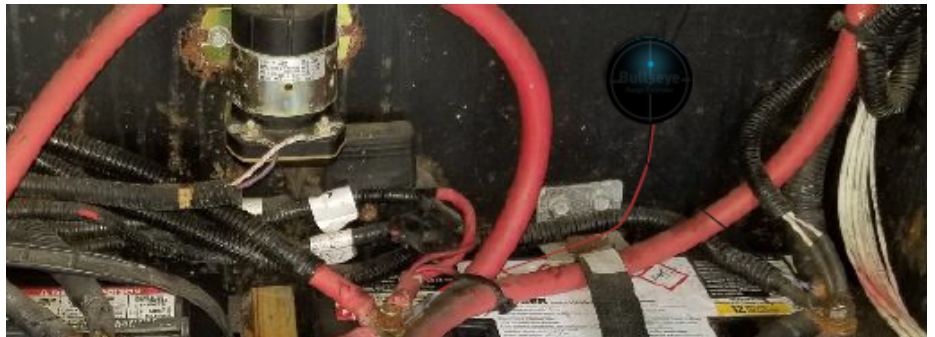
Textured surfaces are not recommended for mounting. If 3M gel suction cup loses its stickiness, rinse with warm water and let air dry.



## Installing the Range Extender

The range extender is intended to be installed at the chassis battery of the motorhome. It is not required for all motorhomes, but is recommended.

1. Find the chassis battery.
2. Attach the alligator clip on the **black** cable to the battery's **negative** post.
3. Attach the alligator clip on the **red** cable to the battery's **positive** post. The LED power indicator should start flashing.
4. Find and clean a smooth surface to attach the range extender, ensuring that you can see the LED power indicator.
5. Peel the adhesive cover off the back of the range extender and press the adhesive side firmly to the area in step 4.



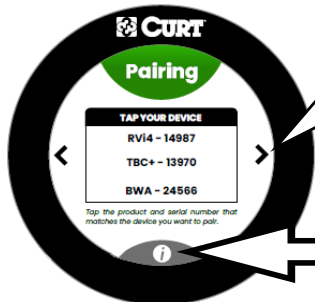
# OPERATION

## Pairing the Bullseye

By default, the Bullseye does not come paired with the braking system. Once powered on, the Bullseye will start up on the Pairing screen. It will automatically look for any RVi Series compatible devices and load their name and serial number, which is its pairing key, in a list ordered by signal strength. The screen will guide you through pairing. You can go to this screen anytime to pair a new device.

### NOTICE

Make sure to read your RVi Series product user guide for pairing steps that may be unique to that device.



The left and right arrows indicate that you can swipe left or right to leave the current page.

When you see the "i" at the bottom of a page, you can tap it and get helpful information for that screen.

## Dashboard

Once paired, the Bullseye will display the Dashboard screen. This screen allows you to navigate to different screens for info, product feedback, and Drive Mode, which is the Bullseye's primary screen.



## Screens

Drive mode is designed for monitoring, controlling and operating the RVi Series braking system as you are driving.



## Screens

The About screen is where you can find your Bullseye's firmware and serial number. To dim the screen, you can also toggle Night Mode on and off for nighttime driving.



The Brake screen allows you to change and test the settings of your RVi Series braking system. For more info, see your braking system user guide.



The Charger screen gives you feedback on the voltage of your towed vehicle's battery, the voltage coming from the motorhome, and the amperage at which your towed vehicle's battery is charging.



The Breakaway screen tells you if the breakaway is connected. Because breakaways are required by law, it is important to check this before each trip.



### NOTICE

You must first pair the Bullseye to a brake, charger and breakaway before tapping on the Products button on the Dashboard. The Bullseye will guide you through this if you forget.

# COMPLIANCE

## Antenna Usage

This equipment has been tested and found to comply with the limits for a class B digital device, pursuant to part 15 of the FCC rules. These limits are designed to provide reasonable protection against harmful interference in a residential installation.

## FCC Radiation Exposure Statement:

To comply with FCC RF exposure requirements in section 1.1307, a minimum separation distance of 0.81 cm (0.3 inches) is required between the antenna and all persons. This equipment generates, uses and can radiate radio frequency energy and, if not installed and used in accordance with the instructions, may cause harmful interference to radio communications. However, there is no guarantee that interference will not occur in a particular installation.

## FCC ID:Z64-CC3100MODR1

If this equipment does cause harmful interference to radio or television reception, which can be determined by turning the equipment off and on, the user is encouraged to try to correct the interference by one or more of the following measures:

Reorient or relocate the receiver antenna.

Increase the separation between the equipment and receiver.

Connect the equipment into an outlet on a circuit different from that to which the receiver is connected.

Consult the dealer or an experienced radio/TV technician for help.

The Installer of this radio equipment must ensure that the antenna is located or points such that it does not emit RF field in excess of Health Canada limits for the general population; consult Safety Code 6, obtainable from Health Canada's website <http://www.hc-sc.gc.ca/rpb>

This device complies with Industry Canada licence-exempt RSS standard(s). Operation is subject to the following two conditions: (1) this device may not cause interference, and (2) this device must accept any interference, including interference that may cause undesired operation of the device.

Le présent appareil est conforme aux CNR d'Industrie Canada applicables aux appareils radio exempts de licence. L'exploitation est autorisée aux deux conditions suivantes : (1) l'appareil ne doit pas produire de brouillage, et (2) l'utilisateur de l'appareil doit accepter tout brouillage radioélectrique subi, même si le brouillage est susceptible d'en compromettre le fonctionnement

**IMPORTANT:** Changes or modifications not expressly approved by Danko Manufacturing LLC could void the user's authority to operate the equipment.