

INSTALLATION MANUAL

70118

Level of Difficulty

Difficult

Installation difficulty levels are based on time and effort involved and may vary depending on the installer level of expertise, condition of the vehicle and proper tools and equipment.

Installed Attachment Tabs

Height	16"
Width	20"

Parts List

Item	Qty	Description
1	1	Tow bar base plate
2	2	Tow bar mounting tab
3	2	Safety cable, 7,500 lbs.
4	4	Square hole spacer, 1/4" x 1" x 2"
5	4	Carriage bolt, 3/8"-16 x 1-1/2", grade 8
6	4	Hex head bolt, 3/8"-16 x 1-1/4", grade 8
7	4	Lock washer, 3/8"
8	4	Nylock nut, 3/8"-16, grade 8
9	4	Flange nut, 3/8"-16, grade 8
10	2	Quick link, 1/2"
11	2	Socket plug

Tools Required

Torque wrench	Drill
Socket, 7mm	Drill bit, 3/8"
Socket, 7/16"	Nut driver, 5/16"
Socket, 9/16"	T15 Torx
Wrench, 7/16"	Tape measure
Wrench, 9/16"	Phillips screwdriver
Utility knife	Flat head screwdriver
Paint pen	Aviator shears
Large vise grip	Fishwire, 3/8" (includes four)

⚠ WARNING

Never exceed the vehicle manufacturer's recommended gross vehicle weight rating (GVWR).

Product Photo



Not pictured: Safety cables, quick links and socket plugs

⚠ CAUTION

Take care when cutting any plastic or metal as injury may occur if done improperly.

NOTICE

Visit www.curtmfg.com for a full-color copy of this instruction manual, as well as helpful videos, guides and much more!

Before you begin installation, read all instructions thoroughly.

Proper tools will improve the quality of installation and reduce the time required.

This installation requires the front fascia panel to be temporarily removed and reinstalled. Some drilling and trimming are required.

To help prevent damage to the product or vehicle, refer to the specified torque specifications when securing hardware during the installation process.

If equipped, we recommend removing the base plate attachment tabs when not in use.

SAFETY INSTRUCTIONS

Safety glasses should be worn at all times while installing this product.

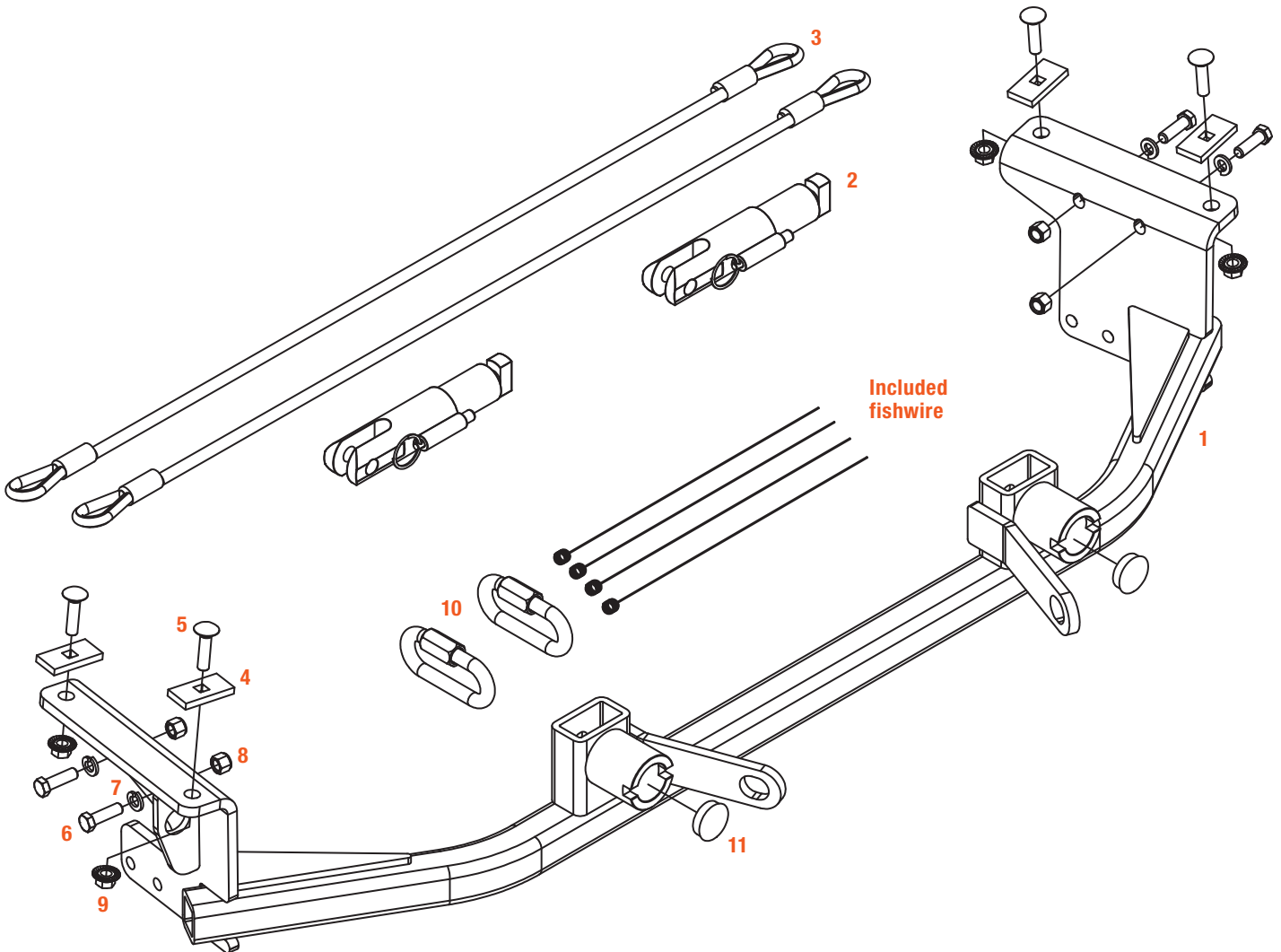
Product Registration and Warranty

CURT stands behind our products with industry-leading warranties. To get copies of the product warranties, register your purchase or provide feedback, visit: warranty.curtgroup.com/surveys

ASSEMBLY

Parts List

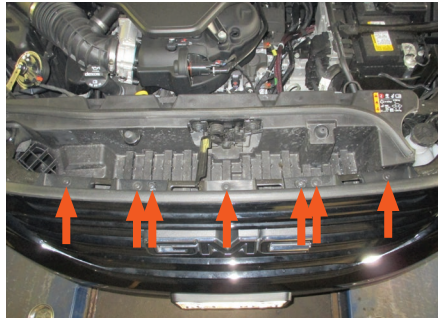
Item	Qty	Description
1	1	Tow bar base plate
2	2	Tow bar mounting tab
3	2	Safety cable, 7,500 lbs.
4	4	Square hole spacer, 1/4" x 1" x 2"
5	4	Carriage bolt, 3/8"-16 x 1-1/2", grade 8
6	4	Hex head bolt, 3/8"-16 x 1-1/4", grade 8
7	4	Lock washer, 3/8"
8	4	Nylock nut, 3/8"-16, grade 8
9	4	Flange nut, 3/8"-16, grade 8
10	2	Quick link, 1/2"
11	2	Socket plug



BUMPER FASCIA REMOVAL

Step 1

Open the hood and use a T-15 Torx bit to remove the seven screws along the top edge of the grill.



Step 2

Use a T-15 Torx bit to remove the four screws along the inside edge of the wheel well liner.

Repeat on the other side of the vehicle.



Step 3

Carefully pull the plastic wheel edge trim piece in front of the tire to allow access to the bumper cover.

Repeat on the other side of the vehicle.



Step 4

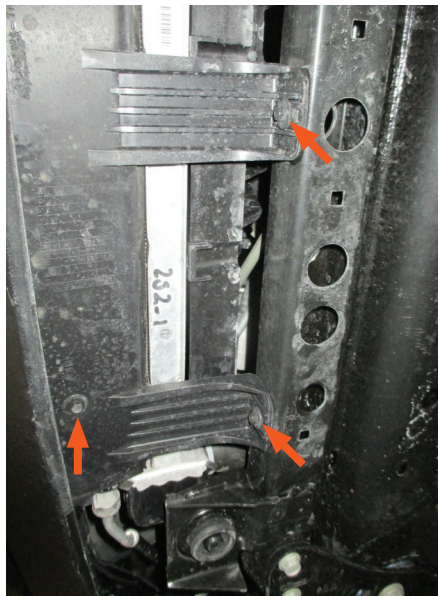
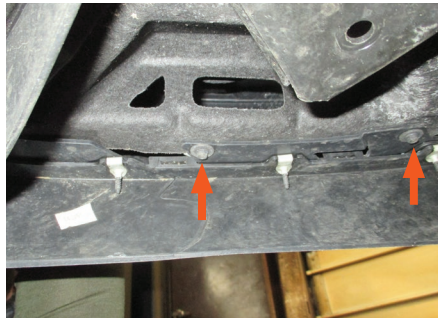
Pull the wheel well liner back and use a 7mm socket to remove the bolt at the bumper fascia joint.

Repeat on the other side of the vehicle.



Step 5

Use a 7mm socket to remove the ten bolts along the underside of the vehicle – three on each side and four in the center.

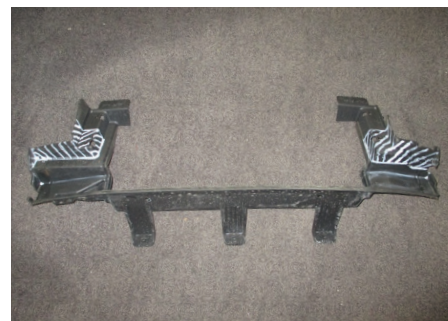
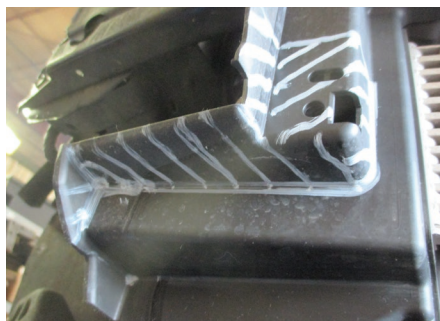
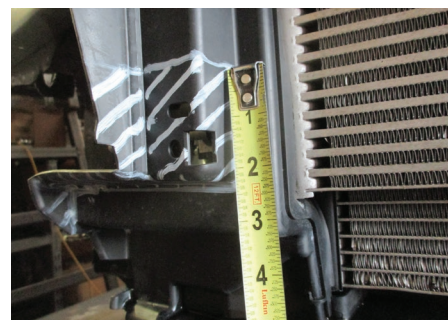
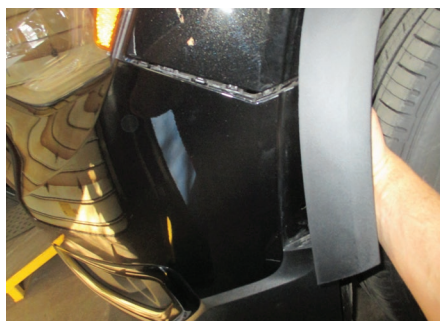


Step 6

Remove the bumper fascia by pulling up and out at the edges, near the wheel wells. Make sure to disconnect any electrical harnesses. Remove the bumper fascia entirely and set it aside.

For All-Terrain Models (as shown): Use a paint pen to mark the areas on the bumper that need to be trimmed, as shown. Use a tin snips or aviator shears to cut off the marked areas.

For Denali Models (not pictured): Hold the base plate in position and use a paint pen to mark the areas on the radiator air dam that need to be trimmed, as needed. Use a tin snips or aviator shears to cut off the marked areas.



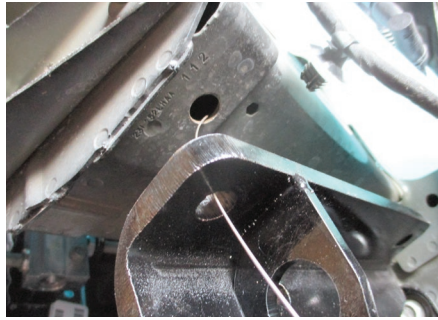
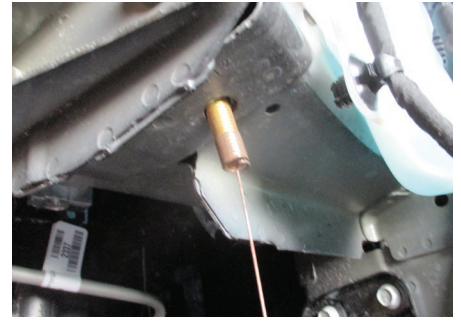
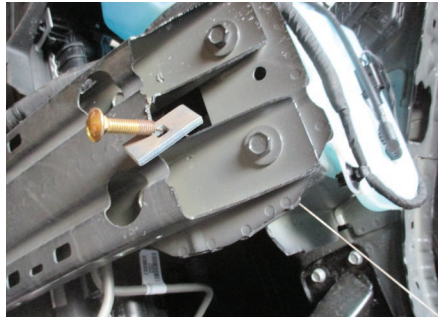
TOW BAR BASE PLATE INSTALLATION

Step 7

Position the tow bar base plate (#1) on the vehicle frame and clamp it into place.

Fishwire a 3/8" carriage bolt and square hole spacer (#4) into the front-most hole on each side of the vehicle. Secure with 3/8" flange nuts (#9).

Using the rear hole as a guide, drill a 3/8" hole into the frame. Install a 3/8" carriage bolt (#5) and square hole spacer (#4) into each of the rear holes. Secure with 3/8" flange nuts (#9).



Step 8

Using the side plate holes as a guide, drill the remaining 3/8" holes into the lower frame pinch seam. Insert a 3/8" hex head bolt (#6) and 3/8" lock washer (#7) into each hole. Secure them with 3/8" nylock nuts (#8).



Step 9

Install the permanent safety cables (#3) and quick links (#10), looping them around the vehicle frame and linking them to the tow bar base plate (#1). There must be one cable on each side of the vehicle.

Make sure the cables do not pinch or interfere with any hoses, wiring or other components.

See 'Installing the Permanent Base Plate Safety Cables' for additional information.

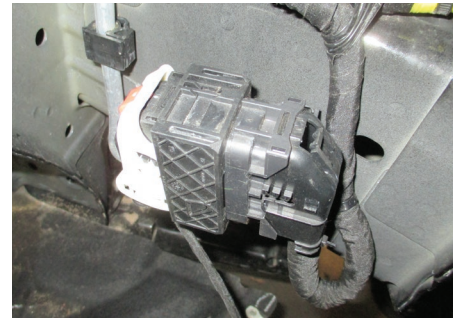


Step 10

Hold up the front fascia in its original position and mark where it will need to be trimmed to make space for the safety cable loops and attachment tabs. Trim out the marked areas.

Reinstall the panel, making sure to reconnect the electrical harnesses.

When ready to tow, install the tow bar mounting tabs (#2). When not towing, insert the socket plugs (#11) into the ends of the tow bar base plate (#1).



Final Installed Image



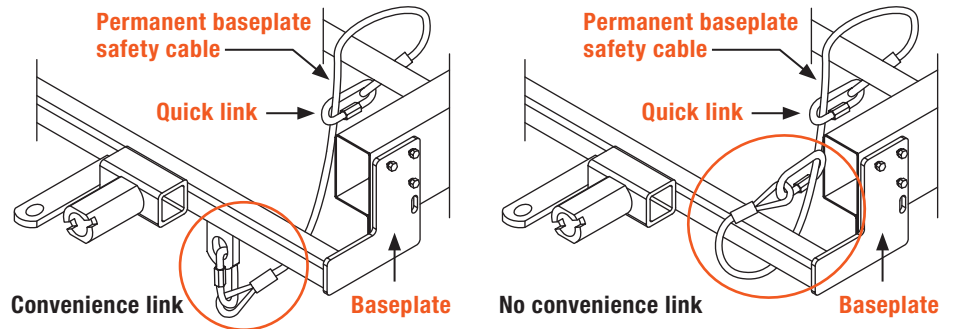
SAFETY CABLE INSTALLATION

Installing the Permanent Base Plate Safety Cables

When dinghy towing a vehicle with a tow bar, base plate safety cables should be used at all times. In the event of a disconnect, the safety cables are designed to help prevent complete vehicle separation. When installing the safety cables, use the illustrations below as a guide.

Installation guidelines

1. The cables must be connected to the base plate and the vehicle frame.
2. Two cables must be installed.
3. Each cable must meet or exceed the gross weight of the towed vehicle.
4. Make sure cables do not pinch or interfere with hoses, wiring or other components.



Note: Base plate safety cables are not a replacement for safety chains connecting the tow vehicle to the towed vehicle.

ADDITIONAL INFORMATION

Towing Tips

Check your equipment

Periodically check the condition of all towing equipment. Ensure all fasteners are tight and that all structural components are sound. Do not tow with worn or damaged parts.

Towing vehicle and trailer manufacturer's recommendations

Review the owner's manual for your towing vehicle and trailer for specific recommendations, capacities and requirements.