

# INSTALLATION MANUAL

# 70121

## Level of Difficulty

Moderate

Installation difficulty levels are based on time and effort involved and may vary depending on the installer level of expertise, condition of the vehicle and proper tools and equipment.

## Installed Attachment Tabs

Height	19"
Width	35"

## Parts List

Item	Qty	Description
1	1	Tow bar base plate, driver side
2	1	Tow bar base plate, passenger side
3	2	Tow bar mounting tab
4	2	Safety cable, 7,500 lbs.
5	2	Hex bolt, M12-1.5 x 40mm
6	2	Conical-toothed washer, 1/2"
7	2	Quick link, 1/2"
8	2	Socket plug
9	2	Serrated-flange nut, 1/2"-13, grade 5
10	2	Square-hole spacer, 1/4" x 1" x 3"
11	2	Carriage bolt, 1/2"-13, 1-1/2", grade 8
12	2	Fishwire, 1/2"

## Tools Required

Flathead screwdriver	Socket, 8mm
Torque wrench	Socket, 18 mm
Drill	Socket, 7/16"
Drill bit, 1/2"	Socket, 3/4"
Wrench, 7/16"	Die grinder with carbide burr
Wrench, 3/4"	--

## ⚠ WARNING

Never exceed the vehicle manufacturer's recommended gross vehicle weight rating (GVWR).

## Product Photo



Not pictured: Safety cables, quick links and socket plugs

## ⚠ CAUTION

Take care when cutting any plastic or metal as injury may occur if done improperly.

## NOTICE

Visit [www.curtmfg.com](http://www.curtmfg.com) for a full-color copy of this instruction manual, as well as helpful videos, guides and much more!

Before you begin installation, read all instructions thoroughly.

Proper tools will improve the quality of installation and reduce the time required.

This installation requires:

- Temporary removal of lower wheel well liners
- Removal of factory tow hooks
- Fishwiring to install hardware
- Drilling and trimming required

To help prevent damage to the product or vehicle, refer to the specified torque specifications when securing hardware during the installation process.

If equipped, we recommend removing the base plate attachment tabs when not in use.

## SAFETY INSTRUCTIONS

Safety glasses should be worn at all times while installing this product.

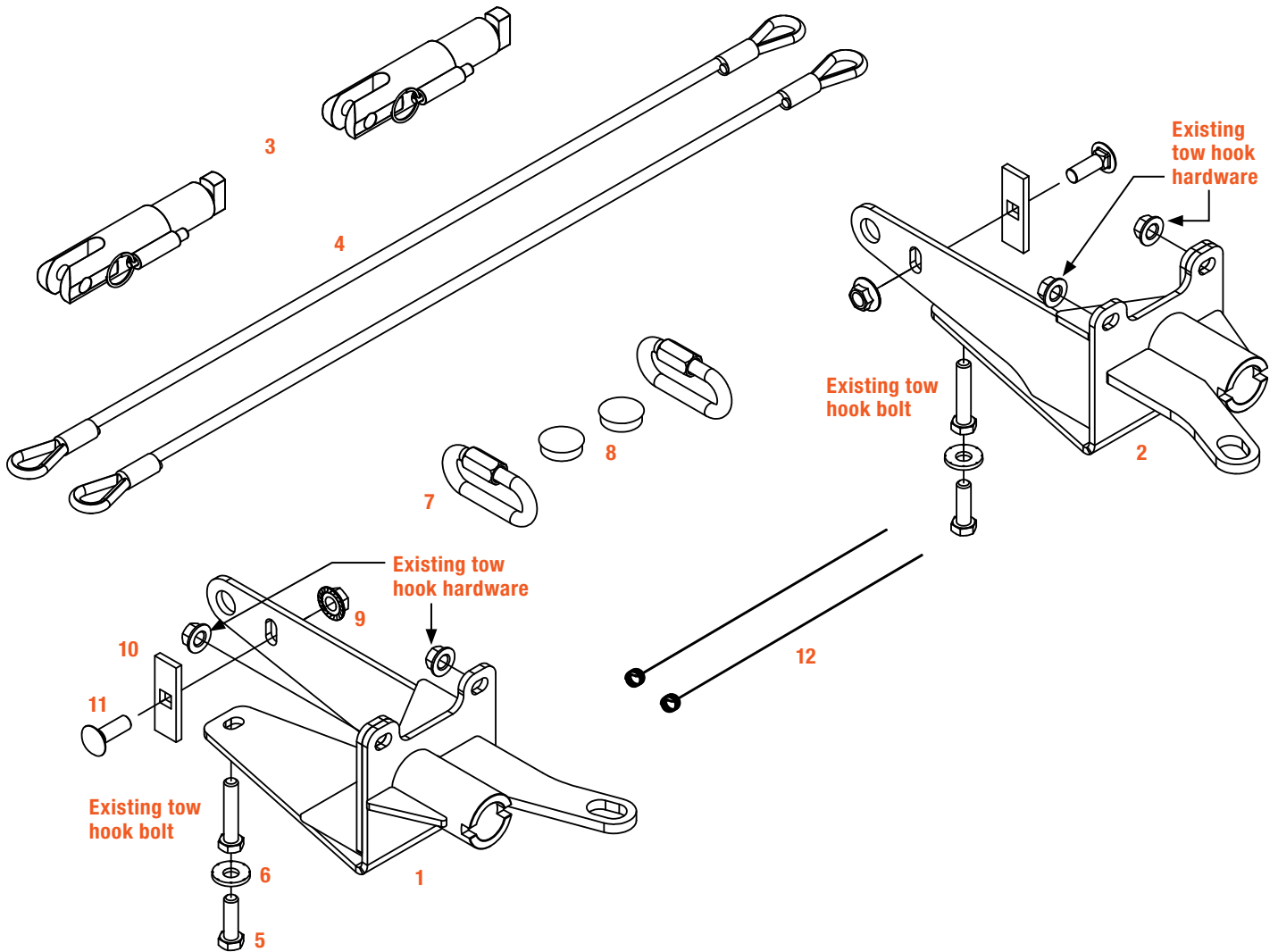
## Product Registration and Warranty

CURT stands behind our products with industry-leading warranties. To get copies of the product warranties, register your purchase or provide feedback, visit: [warranty.curtgroup.com/surveys](http://warranty.curtgroup.com/surveys)

# ASSEMBLY

## Parts List

Item	Qty	Description
1	1	Tow bar base plate, driver side
2	1	Tow bar base plate, passenger side
3	2	Tow bar mounting tab
4	2	Safety cable, 7,500 lbs.
5	2	Hex bolt, M12-1.5 x 40mm
6	2	Conical-toothed washer, 1/2"
7	2	Quick link, 1/2"
8	2	Socket plug
9	2	Serrated-flange nut, 1/2"-13, grade 5
10	2	Square-hole spacer, 1/4" x 1" x 3"
11	2	Carriage bolt, 1/2"-13, 1-1/2", grade 8
12	2	Fishwire, 1/2"

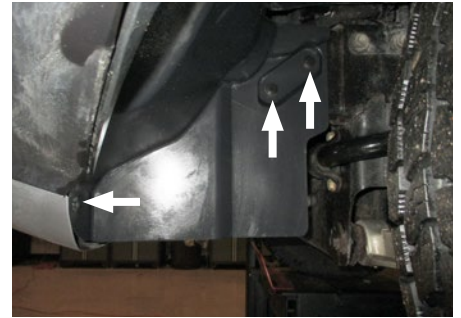


# TOW HOOK & LINER REMOVAL

## Step 1

**Rebel models only:** Use an 8mm socket to remove the three screws from the lower wheel well liner. Also remove the two push pins. Remove the liner and set it aside.

Repeat on the other side of the vehicle.



## Step 2

Use an 18mm socket to remove the two nuts and one bolt securing the tow hook in place. Remove the tow hook and set it aside.

Repeat on the other side of the vehicle.



## Step 3

Use a 1/2" drill bit to ream out the inner, lower hole in the frame extension as needed.

Repeat on the other side of the vehicle.



# TOW BAR BASE PLATE INSTALLATION

## Step 4

Position the driver-side base plate (#1) on the vehicle frame and secure it with the factory tow hook hardware on each side.

Some trimming may be required for the baseplate tube to pass through the tow hook opening. Use a die grinder to trim the top of the opening as needed.

Repeat on the other side of the vehicle using the passenger-side base plate (#2).

Torque the hardware to 58 lb-ft.



## Step 5

Fishwire (#12) the 1/2" carriage bolt (#11) and square-hole spacer (#10) into the rear base plate hole, through the frame extension. Enlarge the lower corner opening on frame extension if needed.

Repeat on the other side of the vehicle and torque the hardware to 110 lb-ft.

**Note:** The base plate holes may need to be reamed out for proper alignment with the bottom extension holes.



## Step 6

Install the permanent safety cables (#4) and quick links (#7), looping them around the vehicle frame and linking them to the tow bar base plates (#1,#2). There must be one cable on each side of the vehicle.

Make sure the cables do not pinch or interfere with any hoses, wiring or other components.

See 'Installing the Permanent Base Plate Safety Cables' for additional information.

**Rebel models only:** Reinstall the lower wheel well liners.

When ready to tow, install the tow bar mounting tabs (#3). When not towing, insert the socket plugs (#8) into the ends of the tow bar base plates (#1,#2).



## Final Installed Image



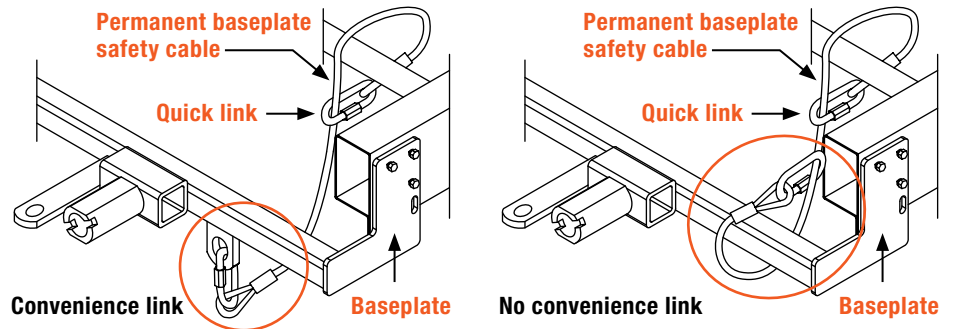
# SAFETY CABLE INSTALLATION

## Installing the Permanent Base Plate Safety Cables

When dinghy towing a vehicle with a tow bar, base plate safety cables should be used at all times. In the event of a disconnect, the safety cables are designed to help prevent complete vehicle separation. When installing the safety cables, use the illustrations below as a guide.

### Installation guidelines

1. The cables must be connected to the base plate and the vehicle frame.
2. Two cables must be installed.
3. Each cable must meet or exceed the gross weight of the towed vehicle.
4. Make sure cables do not pinch or interfere with hoses, wiring or other components.



**Note:** Base plate safety cables are not a replacement for safety chains connecting the tow vehicle to the towed vehicle.

## ADDITIONAL INFORMATION

### Towing Tips

#### Check your equipment

Periodically check the condition of all towing equipment. Ensure all fasteners are tight and that all structural components are sound. Do not tow with worn or damaged parts.

#### Vehicle manufacturer's recommendations

Review the owner's manual for your towed vehicle and towing vehicle for specific recommendations, capacities and requirements.