

INSTALLATION MANUAL

70125

Level of Difficulty

Difficult

Installation difficulty levels are based on time and effort involved and may vary depending on the installer level of expertise, condition of the vehicle and proper tools and equipment.

Installed Attachment Tabs

Height	16"
Width	35-1/4"

Parts List

Item	Qty	Description
1	1	Tow bar base plate, driver-side
2	1	Tow bar base plate, passenger-side
3	1	Center assembly
4	2	Mounting plate
5	2	Round-hole spacer
6	2	Tow bar mounting tab
7	2	Safety cable, 7,500 lbs.
8	10	Serrated-flange nut, 3/8"-16, grade 8
9	2	Hex head bolt, 3/8"-16 x 1-1/4", grade 8
10	6	Conical-toothed washer, 3/8"
11	8	Square hole spacer, 1/4" x 1" x 2"
12	2	Hex head bolt, 1/2"-13 x 3-1/2", grade 5
13	4	Hex head bolt, 1/2"-13 x 2-3/4", grade 8
14	4	Serrated-flange nut, 1/2"-13, grade 8
15	2	Conical-toothed washer, 1/2"
16	4	Hex head bolt, 3/8"-16 x 1-1/2", grade 8
17	8	Carriage bolt, 3/8"-16 x 1-1/2", grade 8
18	2	Quick link, 1/2"
19	2	Socket plug

Product Registration and Warranty

CURT stands behind our products with industry-leading warranties. To get copies of the product warranties, register your purchase or provide feedback, visit: warranty.curtgroup.com/surveys

⚠ WARNING

Never exceed the vehicle manufacturer's recommended gross vehicle weight rating (GVWR).

Product Photo



Not pictured: Safety cables, quick links and socket plugs

⚠ CAUTION

Take care when cutting any plastic or metal as injury may occur if done improperly.

NOTICE

Visit www.curtmfg.com for a full-color copy of this instruction manual, as well as helpful videos, guides and much more!

Before you begin installation, read all instructions thoroughly.

Proper tools will improve the quality of installation and reduce the time required.

This installation requires:

- Temporary removal and reinstallation of the bumper cover, fascia panels, wiring and engine block heater
- Fishwiring to install hardware
- Drilling and trimming

To help prevent damage to the product or vehicle, refer to the specified torque specifications when securing hardware during the installation process.

If equipped, we recommend removing the base plate attachment tabs when not in use.

SAFETY INSTRUCTIONS

Safety glasses should be worn at all times while installing this product.

Tools Required

Torque Wrench	Drill
Socket, 7mm	Drill bit, 1/8"
Socket, 10mm	Drill bit, 3/8"
Socket, 15mm	Drill bit, 1/2"
Socket, 3/4"	Hole saw, 1-1/4"
Socket, 7/16"	Hole saw, 2-1/4"

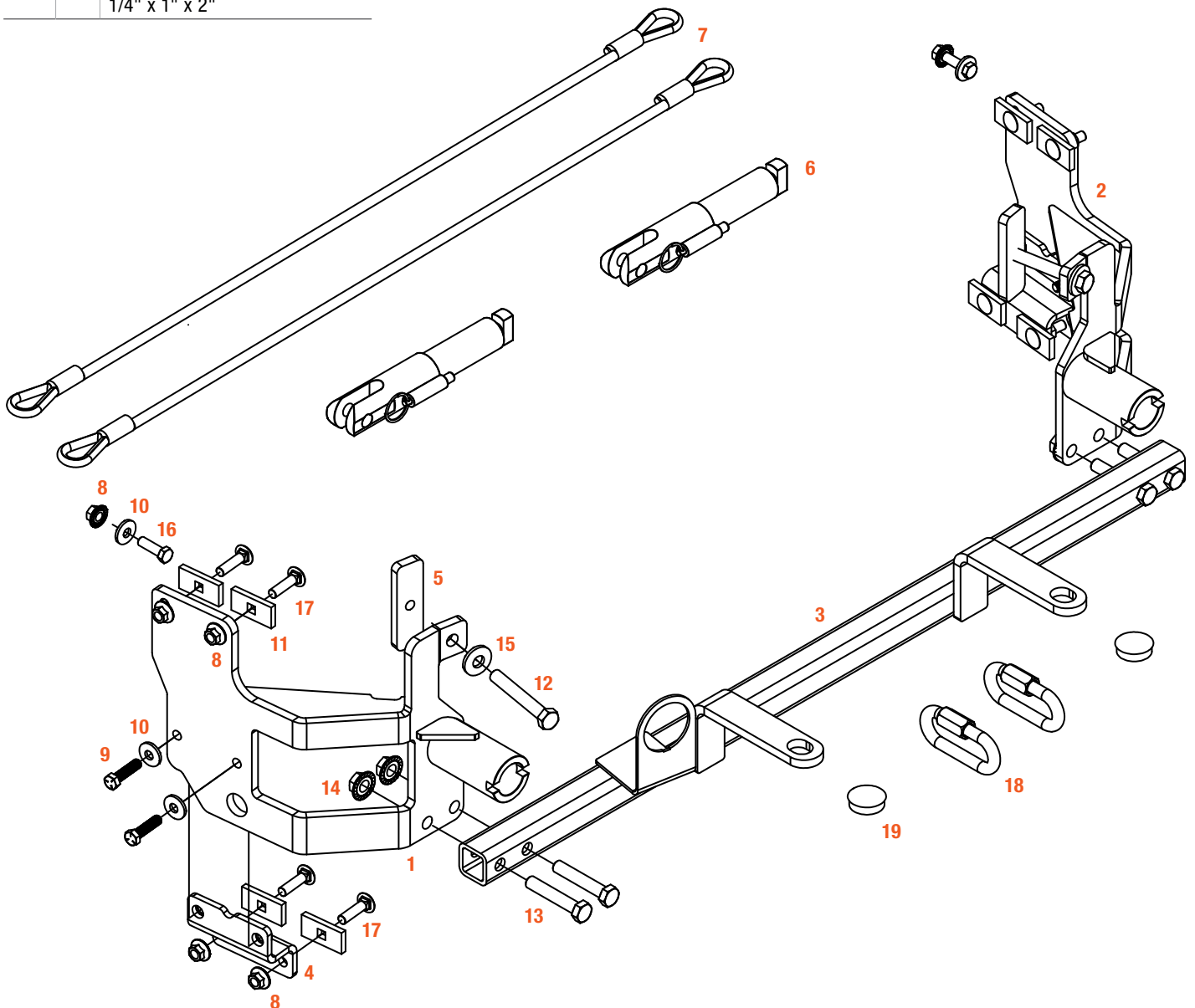
Tools Required

Socket, 9/16"	Die grinder
Flat screwdriver	Wrench, 8mm
Utility knife	Wrench, 7/16"
Nut driver, 5/16"	Wrench, 3/4"
T25 Torx	Wrench, 9/16"
T30 Torx	Fishwire, 3/8" (includes eight)

ASSEMBLY

Parts List		
Item	Qty	Description
1	1	Tow bar base plate, driver-side
2	1	Tow bar base plate, passenger-side
3	1	Center assembly
4	2	Mounting plate
5	2	Round-hole spacer
6	2	Tow bar mounting tab
7	2	Safety cable, 7,500 lbs.
8	10	Serrated-flange nut, 3/8"-16, grade 8
9	2	Hex head bolt, 3/8"-16 x 1-1/4", grade 8
10	6	Conical-toothed washer, 3/8"
11	8	Square hole spacer, 1/4" x 1" x 2"

Parts List		
Item	Qty	Description
12	2	Hex head bolt, 1/2"-13 x 3-1/2", grade 5
13	4	Hex head bolt, 1/2"-13 x 2-3/4", grade 8
14	4	Serrated-flange nut, 1/2"-13, grade 8
15	2	Conical-toothed washer, 1/2"
16	4	Hex head bolt, 3/8"-16 x 1-1/2", grade 8
17	8	Carriage bolt, 3/8"-16 x 1-1/2", grade 8
18	2	Quick link, 1/2"
19	2	Socket plug

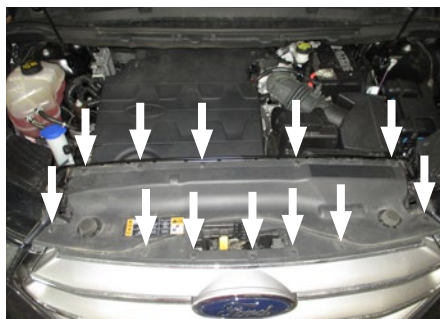


PART REMOVAL

2015-2018 FORD EDGE

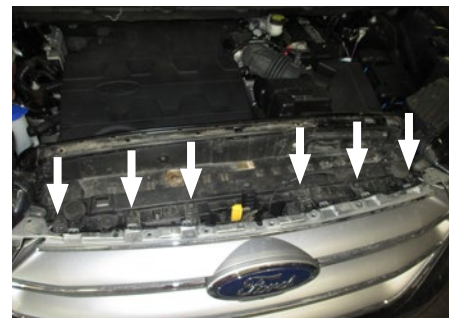
Step 1

Remove the 12 pushpins securing the radiator cover. Set the cover aside to be reinstalled later.



Step 2

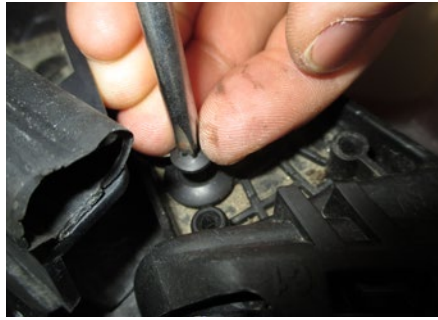
Use a 10mm socket to remove the six bolts holding the top of the grille, three on each side.



Step 3

Use a 10mm socket and Phillips screwdriver to remove the two bolts and one pushpin securing the top of the headlight housing.

Unhook the headlight connectors and set the headlights aside.



Step 4

Use a 5.5mm socket to remove the six bolts from the edge of the wheel well on both sides of the vehicle.



Step 5

Use an 8mm socket to remove the three bolts from the bumper cover / fender seam below the headlight cavity on both sides.

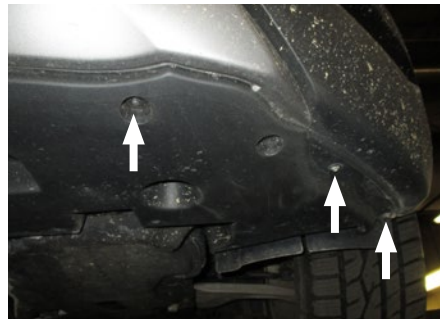
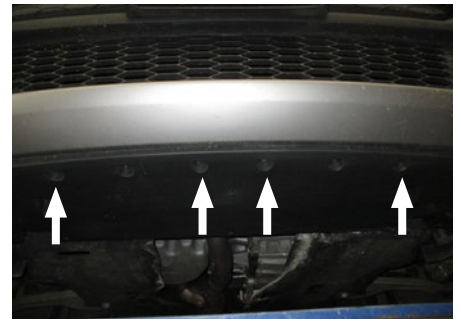
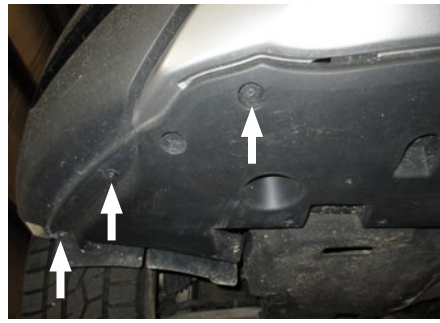


Step 6

Use a 5.5mm socket to remove the 10 bolts from bottom of the bumper cover, three on each side and four in the middle.

Unpin the fascia by the headlight locations and lift the clips in the center of the bumper cover. Pull the corners of the fascia away from the vehicle disconnecting any electrical connections and set the fascia aside.

Note: Some models have as many as five electrical connectors on the driver side and a hose for windshield wash on the passenger side. Temporarily pinch off / plug the hose to the windshield wash reservoir with a clamp as it will leak when disconnected.



Step 7

Automatic Shutter Models without ACC: Remove the air dam on the driver side next to the shutter mounting bracket.

Step 8

Trim the side area of the air dam as needed.



Step 9

ACC Models: Disconnect the ACC wiring harness and route it in behind the metal bracket.

Step 10

Trim the lower sides of the shutter frame as needed and remove the bottom two shutters on the vehicle to allow room for the baseplate.



Step 11

Using a utility knife, trim the marked areas on the driver and passenger side of the vehicle.

Proceed to step 24.



PART REMOVAL

2016-2018 LINCOLN MKX

Step 12

To remove the radiator cover, remove the 19 pushpins, eight on each side and three in center.

Step 13

Using a T-25 Torx bit, remove the four screws from the top of the headlight housings, two on each side.

Step 14

Remove six bolts from the top of the grill using a 10mm socket, three on each side.

Step 15

Remove the ten pushpins along the edge of the wheel well, five on each side.

Step 16

Using an 8mm socket, remove six bolts inside the wheel well liner by pulling it back, three on each side.

Step 17

Use a 5.5mm socket to remove 18 screws from the bottom of the bumper fascia, eight on each side and two in the middle.

Step 18

Use a 7mm socket to remove the two bolts and one pushpin from both sides of the underbody panel. Remove the panel.

Step 19

If the vehicle has a plug in the grill on the passenger side, it is the engine block heater and will require temporary removal

Carefully remove the bumper fascia and set aside.

Step 20

Using a utility knife, trim the air dam on the driver side of the vehicle.

Step 21

On the driver side, unclip the electrical harness from the pushpin bracket. Use a utility knife to trim as needed.

Step 22

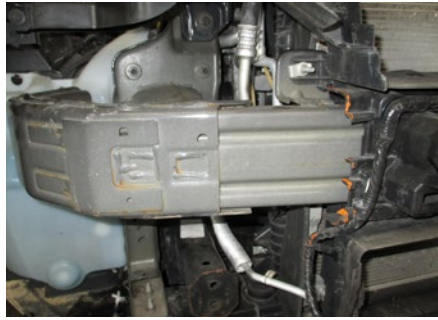
Using a utility knife, trim the air dam on the driver side.

Step 23

Using a utility knife, trim the section above the adaptive cruise control sensor on the driver side as needed.

Step 24

Using a utility knife, trim the indicated areas on the passenger side of the vehicle.



TOW BAR BASE PLATE INSTALLATION

Step 25

Place the driver-side base plate side plate (#1) onto the vehicle frame and mark the two holes on the side of the frame. Use a 3/8" drill bit or die grinder to drill and enlarge the two small holes and then use a 1-1/4" drill bit / hole saw to drill one access hole in the top slanted edge of the frame.

Next, drill a 3/8" hole and insert one 3/8" hex bolt (#16) into the top of the frame flange as needed to reinforce the bumper to the frame.

Repeat on the passenger side of the vehicle using the passenger-side base plate side plate (#2).



Step 26

Remove the foam pieces from both sides of the radiator and discard.

Step 27

Remove the two pushpins from the air dam. Set the back plastic piece off to the side to allow baseplate to fit.
Note: If equipped with automatic shutters, the bottom two blades will need removal for the baseplate to fit.

Step 28

Using a 1-1/4" drill bit / hole saw, drill one hole as shown into the end of the lower frame, both sides of the vehicle.



Step 29

Fishwire two square-hole spacers (#11) and two 3/8" carriage bolts (#17) into position and hold the baseplate side plate in position over the bolts. Loosely install two 3/8" serrated-flange nuts (#8). Make sure the bracket is level and snug.

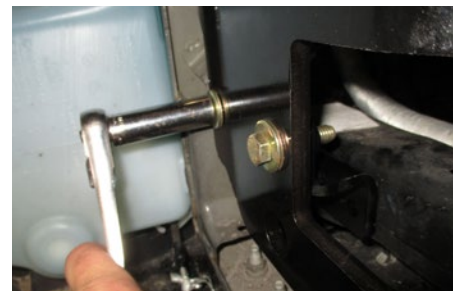
Repeat on the other side of the vehicle.



Step 30

Attach the mounting plate (#4) to the baseplate side plate with two 3/8" hex bolts (#9) and two conical tooth washers (#10), as shown.

Repeat on the other side of the vehicle.



Step 31

Using four 1/2" x 2-3/4" hex bolts (#13) and four 1/2" serrated-flange nuts (#14), attach the baseplate center assembly (#3) to the baseplate side plates (#1, #2).

Note: The round-hole spacer (#5) allows for reinstallation of factory engine block heater, if equipped.



Step 32

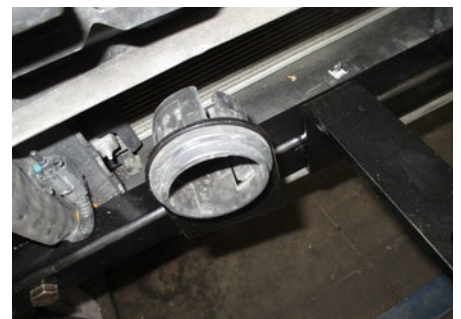
Level each baseplate side plate and use a 1/2" drill bit to drill out the two holes in the top of each. Start with a 1/4" drill bit and work up to a 3/8" drill bit. Then use a 1/2" drill bit.



Step 33

Install the two 1/2" hex bolts (#12), conical-toothed washers (#15) and threaded round-hole spacers (#5) on the backside of the bumper beam, as shown.

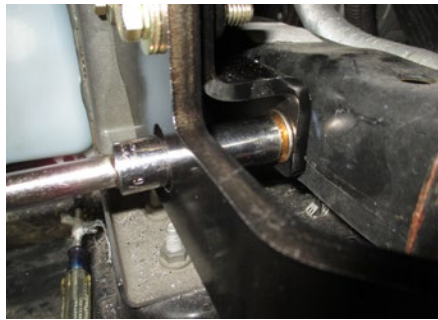
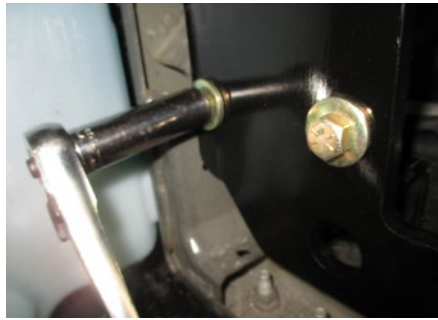
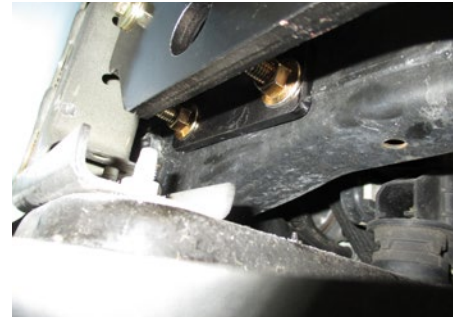
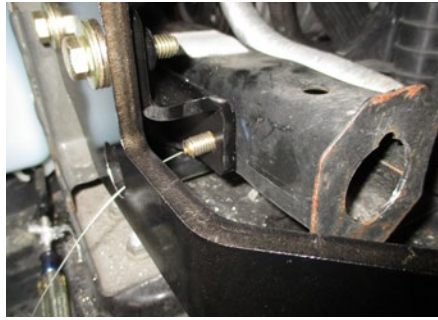
If equipped, reinstall engine block heater.



Step 34

Drill the lower two holes in the frame for the mounting plate with a 3/8" drill bit. Then fishwire two 3/8" bolts (#17) with square-hole spacers (#11). Loosely install the remaining 3/8" serrated-flange nuts (#8) on both sides of the vehicle as shown.

Torque all 3/8" fasteners to 37 lb-ft, the upper two 1/2" fasteners to 64 lb-ft and the remaining four 1/2" fasteners to 110 lb-ft.



Step 35

Install the permanent safety cables (#7) and quick links (#18), looping them around the vehicle frame and linking them to the tow bar base plates (#1,#2). There must be one cable on each side of the vehicle.

Make sure the cables do not pinch or interfere with any hoses, wiring or other components.

See 'Installing the Permanent Base Plate Safety Cables' for additional information.



Step 36

Note: If there is a factory engine block heater on the vehicle, the grill insert will need to be trimmed to fit the new mounted location.

Step 37

Hold the fascia in its installed position, mark and trim the fascia for the attachment tabs to pass through. Reinstall the bumper fascia cover. Make sure to reconnect all electrical connections, hose and reinstall all structural fasteners that were removed.

Note: Trim as closely to the tabs as possible in the bumper cover to prevent any interference with the adaptive cruise control.

When ready to tow, install the tow bar mounting tabs (#6).

When not towing, insert the socket plugs (#19) into the ends of the tow bar base plates (#1,#2).

Final Installed Image



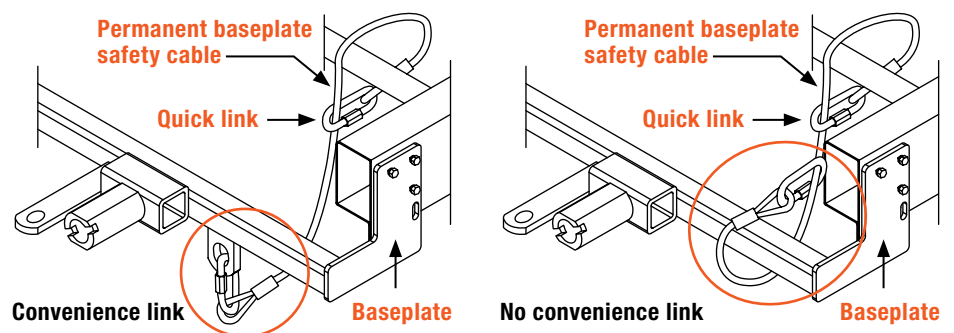
SAFETY CABLE INSTALLATION

Installing the Permanent Base Plate Safety Cables

When dinghy towing a vehicle with a tow bar, base plate safety cables should be used at all times. In the event of a disconnect, the safety cables are designed to help prevent complete vehicle separation. When installing the safety cables, use the illustrations below as a guide.

Installation guidelines

1. The cables must be connected to the base plate and the vehicle frame.
2. Two cables must be installed.
3. Each cable must meet or exceed the gross weight of the towed vehicle.
4. Make sure cables do not pinch or interfere with hoses, wiring or other components.



Note: Base plate safety cables are not a replacement for safety chains connecting the tow vehicle to the towed vehicle.

ADDITIONAL INFORMATION

Towing Tips

Check your equipment	Periodically check the condition of all towing equipment. Ensure all fasteners are tight and that all structural components are sound. Do not tow with worn or damaged parts.
Vehicle manufacturer's recommendations	Review the owner's manual for your towed vehicle and towing vehicle for specific recommendations, capacities and requirements.