

INSTALLATION MANUAL

70128

Level of Difficulty

Moderate

Installation difficulty levels are based on time and effort involved and may vary depending on the installer level of expertise, condition of the vehicle and proper tools and equipment.

Installed Attachment Tabs

Height	19"
Width	20"

Parts List

Item	Qty	Description
1	1	Tow bar base plate
2	2	Backing plate
3	2	Tow bar mounting tab
4	2	Safety cable, 7,500 lbs.
5	4	Carriage bolt, 7/16"-14, 1-1/2", grade 8
6	2	Carriage bolt, 3/8"-16, 1-1/2", grade 8
7	6	Rivet, M6
8	2	Serrated flange nut, 3/8"-16, grade 8
9	4	Serrated flange nut 7/16"-14, grade 8
10	2	Square hole spacer, 1/4" X 1" X 2"
11	2	3/8" Fishwire
12	2	Quick link, 1/2"
13	2	Caplugs, # dop-1375

Tools Required

Torque wrench	Torx socket, T-20
Ratchet	Drill
Socket, 10mm	Drill Bit, 13/32"
Socket, 15mm	Diagonal cutters
Socket, 9/16"	Plastic fastener remover or flathead screwdriver
Socket, 11/16"	

⚠ WARNING

Never exceed the vehicle manufacturer's recommended towing capacity.

Product Photo



NOTICE

Visit www.curtmfg.com for a full-color copy of this instruction manual, as well as helpful videos, guides and much more!

Before you begin installation, read all instructions thoroughly.

Proper tools will improve the quality of installation and reduce the time required.

This installation requires:

- Drilling
- Removal of tow hooks
- Fishwiring

Periodic inspection of your product should be performed to ensure all hardware and / or components remain secure.

To help prevent damage to the product or vehicle, refer to the specified torque specifications when securing hardware during the installation process.

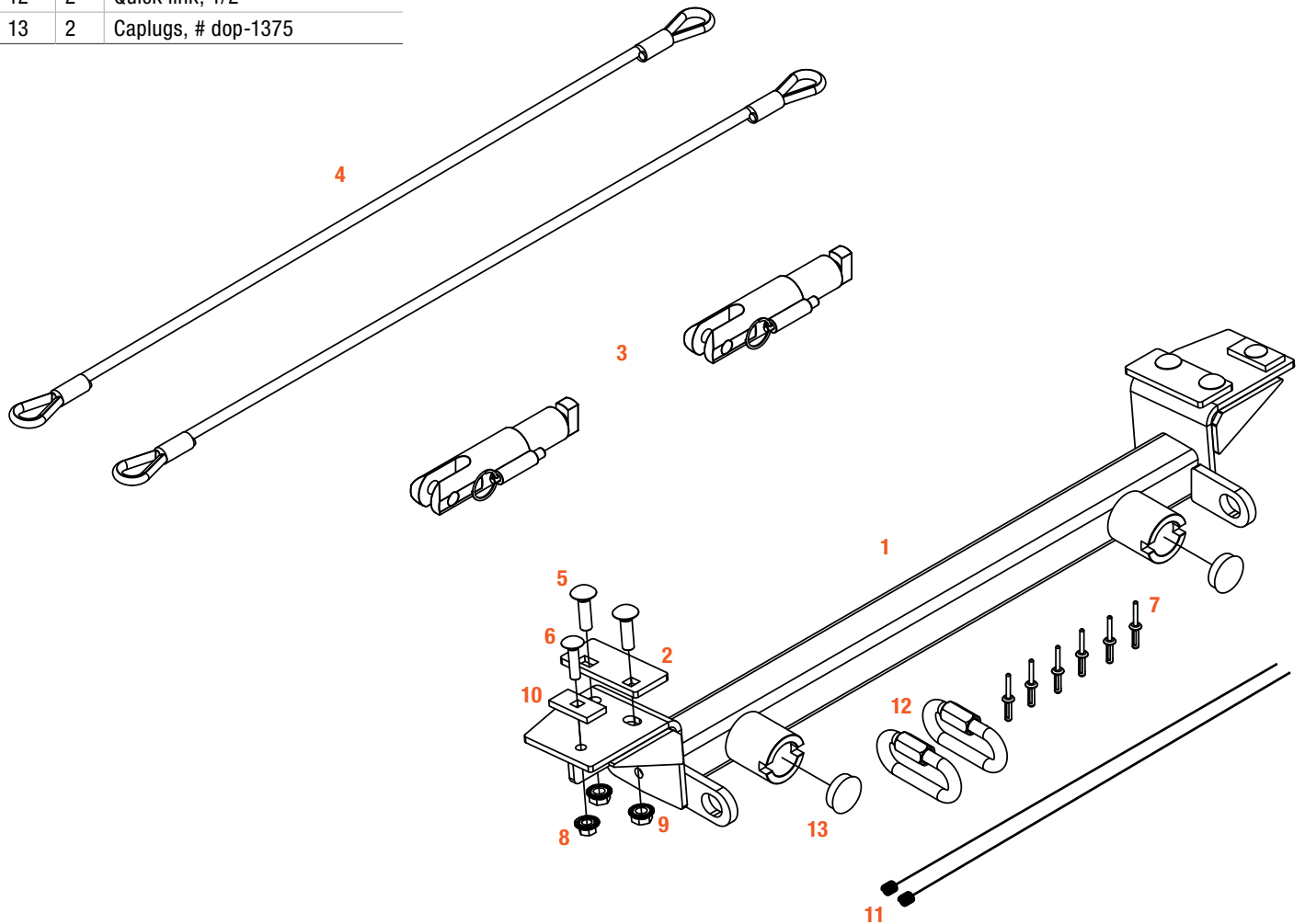
Product Registration and Warranty

CURT stands behind our products with industry-leading warranties. To get copies of the product warranties, register your purchase or provide feedback, visit: warranty.curtgroup.com/surveys

ASSEMBLY

Parts List

Item	Qty	Description
1	1	Tow bar base plate
2	2	Backing plate
3	2	Tow bar mounting tab
4	2	Safety cable, 7,500 lbs.
5	4	Carriage bolt, 7/16"-14, 1-1/2", grade 8
6	2	Carriage bolt, 3/8"-16, 1-1/2", grade 8
7	6	Rivet, M6
8	2	Serrated flange nut, 3/8"-16, grade 8
9	4	Serrated flange nut 7/16"-14, grade 8
10	2	Square hole spacer, 1/4" X 1" X 2"
11	2	3/8" Fishwire
12	2	Quick link, 1/2"
13	2	Caplugs, # dop-1375



Step 1

Disconnect the six tabs on the top edge of the grill by lifting up on each tab. Pull the grill forward slightly to release.

Note: Some models may have two bolts on the top edge that will need to be removed, one on each side of vehicle. Use T-20 Torx socket to remove the bolts.



Step 2

Remove the grill by pulling the top of the grill forward and up. Set the grill aside for reinstallation later.



Step 3

Remove the two bolts located just below the headlight assembly using a 10mm socket. There will be one on each side of vehicle.



Step 4

Remove the two christmas tree fasteners just in front of the front tire on the inside of the wheel well. Repeat on the other side of the vehicle.

Note: Some models may have rivets in these locations. Remove the rivets using diagonal cutters.



Step 5

Remove the christmas tree fastener from the lower inner edge of wheel well just in front of the front wheel. Repeat on the other side.

Note: Some models may have rivets in these locations. Remove the rivets using diagonal cutters.



Step 6

Use a 10mm socket to remove the two metric bolts from the bottom edge of the fascia just below the radiator support.



Step 7

Release the tab on the inside of the wheel well and pull the fascia corner to the side. Repeat on the other side of the vehicle.



Step 8

Push the two tabs down that are located on top of the fascia and gently pull the fascia forward.



Step 9

Unplug the electrical connections on both sides of the vehicle. Set the fascia aside for reinstallation later.



Step 10

Remove the bolt from the hub with a 10mm socket and set the hub aside for reinstallation later. Repeat on the other side of the vehicle.



Step 11

If equipped, remove two nuts and one bolt securing the tow hook mounting bracket using a 15mm socket. Repeat on the other side of the vehicle.

Once removed, return the tow hooks and hardware to the vehicle owner.



Step 12

Insert backing plate (#2) and two 7/16" carriage bolts (#5) into the opening on the end of the frame rail. Pass the bolts through existing holes within the bottom of the frame rail. Repeat this step for both sides of the vehicle. Some vehicles may need to have these existing holes enlarged to achieve proper fit. Raise the baseplate into place and lightly secure using the 7/16" serrated flange nuts (#9).

Note: Insert the backing plate with the slot toward the rear of the vehicle and the holes toward the inside of the vehicle. Tighten the 7/16" serrated flange nuts with a 11/16" socket on both sides of the vehicle.



Step 13

Using the baseplate (#1) as a template, drill a hole into the frame with a 13/32" drill bit, both sides. Fishwire a 3/8" carriage bolt (#6) and spacer (#10) into the opening. Tighten the 3/8" serrated flange nut (#8) using a 9/16" socket on both sides of the vehicle. Torque all 3/8" hardware to 37 ft-lbs and all 7/16" hardware to 59 ft-lbs



Step 14

Install the permanent safety cables (#4), looping them around the vehicle frame and linking them to the tow bar base plate. There must be one cable on each side of the vehicle. Make sure the cables do not pinch or interfere with any hoses, wiring or other components (see Installing the Permanent Base Plate Safety Cables for additional information).



Step 15

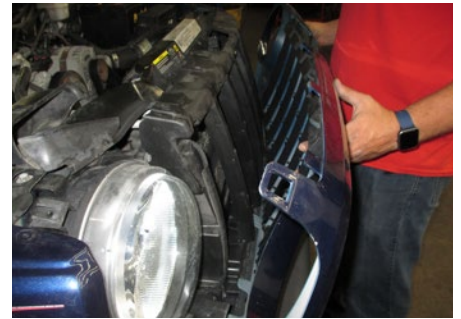
Using a 10mm socket, reinstall each hub on the front of the bumper with the two bolts that were removed during step 10.



Step 16

Reinstall the fascia and grill. Replace the plastic rivets that were removed during steps 4 and 5 of disassembly with the ones provided.

Note: Be sure to reconnect all electrical components that were disconnected during disassembly.



Final Installed Image



TOWING BASICS & SAFETY INFORMATION

For information on safely towing your trailer, visit curtmfg.com/understanding-towing.