

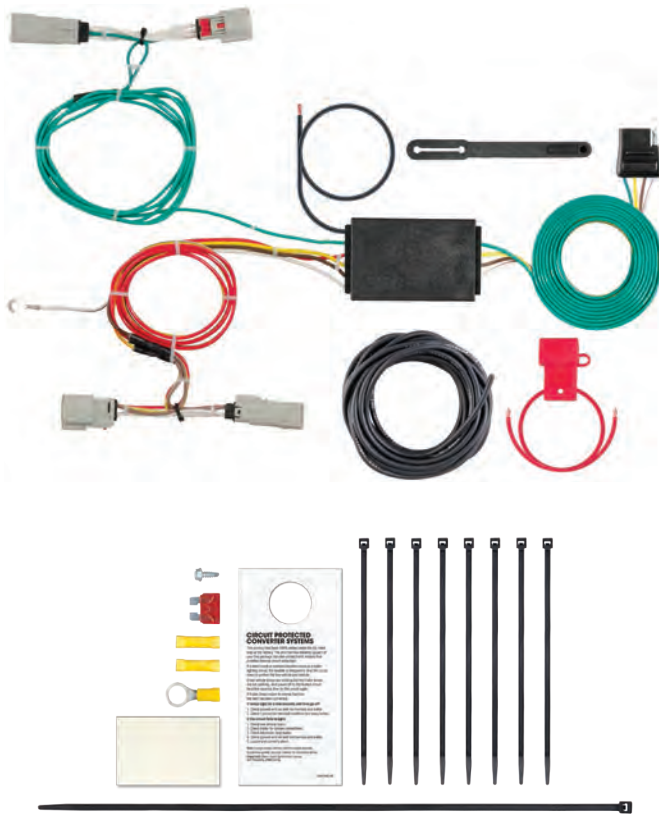
INSTALLATION INSTRUCTIONS

⚠ WARNING: DO NOT EXCEED PRODUCT RATING OR TOW VEHICLE LAMP LOAD RATING, WHICHEVER IS LOWER

APPLICATIONS

Make	Model
Lincoln	MKX

CUSTOM WIRING HARNESS



WIRING LOCATION GUIDE

SUVs, MINI & FULL-SIZED VANS (S)

Representative vehicle shown below

S1 - Behind driver side taillight housing

S2 - Behind passenger side taillight housing



NOTICE  

All steps must be followed to ensure the wiring harness will function properly. Once installed, test for proper function by using a test light or connecting a properly wired trailer.

TOOLS NEEDED

5.5mm socket

T-20 Torx bit

Ratchet

Panel trim removal tool

Phillips screwdriver

Wire stripper

Crimping tool

Cutting tool

⚠ WARNING ⚠ ⚡

The battery connection must be fuse-protected, 10-amp max. Exceeding the product rating can cause loss of warranty, overheating and potential fire. Do not exceed product rating or tow vehicle lamp load rating, whichever is lower.

Signal Circuits - 3.0 amps per side

Tail / Running Circuits - 6.0 amps total

Check vehicle owner's manual or contact the vehicle manufacturer for more information.

INSTALLATION / SAFETY INSTRUCTIONS

Step 1

Locate vehicle battery on the driver side under the hood and disconnect the negative battery terminal.

Step 2

Open the vehicle tailgate. Starting on the driver side, locate and remove the two Phillips screws holding the taillight in place (A).

Removing the taillight by gently pulling to the side of the vehicle and rearward (B). **Note:** Use a soft pry tool on the leading edge of the taillight to assist in the removal.

Step 3

Behind the taillight, locate the vehicle taillight wiring harness connectors (C). The connectors will be similar to those on the custom wiring harness. Separate the connectors from the taillight housing taking care not to damage the locking tabs. Set the taillight aside.

Step 4

Starting with the locking tab closest to the rear hatch and working your way around and down to the rear wheel well, begin removing the bumper fascia by releasing the locking tabs with a soft pry tool (D,E).

Step 5

Release the six locking tabs holding the rear wheel well trim panel in place (F). Locate the T-20 Torx fastener by pushing the rear wheel well trim panel aside. Remove the T-20 Torx bumper retaining fastener (G).

Step 6

Underneath the vehicle locate the panel behind rear tire. Remove the 5.5mm fasteners (H).

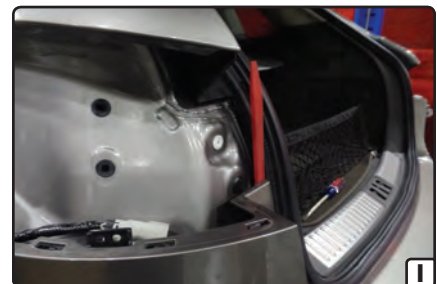
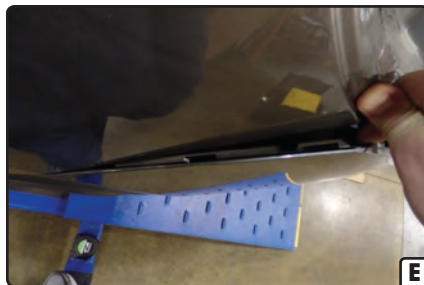
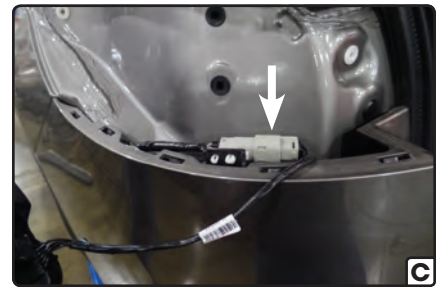
Step 7

Repeat steps 3 - 9 on the passenger side.

Step 8

Begin to remove the bumper fascia by using a soft pry tool to gently pry or pull out at the edges near the hatch opening (I). Once the top retainers are loose the remaining tabs will pop loose and the bumper fascia will be free.

Instructions continued on page 3



INSTALLATION / SAFETY INSTRUCTIONS

Step 9

Locate and unplug the rear collision connector that is exposed on the driver side in the bumper frame (J).

Step 10

Place the bumper fascia off to the side on a clean, soft surface to avoid any scratches or damage.

Step 11

On the driver side, insert the custom wiring harness end with yellow wire between the separated connectors. Make sure the connectors are fully inserted with locking tabs in place.

Step 12

Using the vehicle wiring harness as a guide, route the wiring harness, along with the black converter module, down along the vehicle until the black converter module is at the bumper frame (K).

Step 13

Locate a flat clean surface along the bumper frame that is out of the path of spray and debris from the rear wheels and road (L). Adhere the black converter box using the provided double-sided tape. Failure to mount the box in a protected area can cause loss of warranty, product failure, overheating and potential fire.

Step 14

Route the custom wiring harness end with the green wire to the passenger side along the bumper frame. Repeat steps 11 - 12 on the passenger side using the harness end with the green wire.

Step 15

Locate a suitable grounding point near the connector such as an existing screw with nut in the vehicle frame or drill a 3/32" pilot hole for the provided screw. The area should be free of rust, dirt and paint. Secure the white ground wire using the ring terminal and provided screw.



WARNING: Check for miscellaneous items that may be hidden behind or under any surface before drilling to avoid damage and / or personal injury.

Step 16

Route the black power wire from the vehicle battery as shown on the included CME-PCL-INS sheet.

Step 17

When in use, route the 4-flat to the center of the vehicle. When not in use, roll up and store in a convenient, out of the way location. Secure any loose wires with the provided cable ties.

Step 18

Reinstall all items removed during install and reconnect negative battery terminal. Install the provided 4-flat dust cover to help prevent corrosion.

