

INSTALLATION MANUAL

Level of Difficulty

Moderate

Electrical Ratings

Signal circuits	5.0-amps per side
Tail / Running Circuits	7.5-amps total

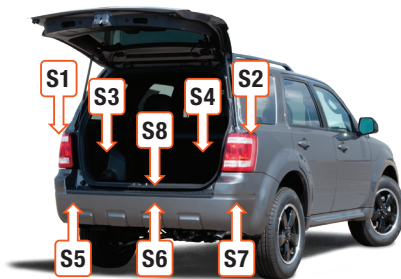
Check vehicle owner's manual or contact the vehicle manufacturer for more information.

Wiring Location(s)

S8 and S9

Wiring Location Guide* for SUVs and Vans (S)

S1	Behind driver side taillight housing
S2	Behind passenger side taillight housing
S3	Behind driver side rear access panel
S4	Behind passenger side rear access panel
S5	Behind driver side rear bumper
S6	Behind center of rear bumper
S7	Behind passenger side rear bumper
S8	Under rear floor panel
S9	



* Representative vehicle shown

Tools Required

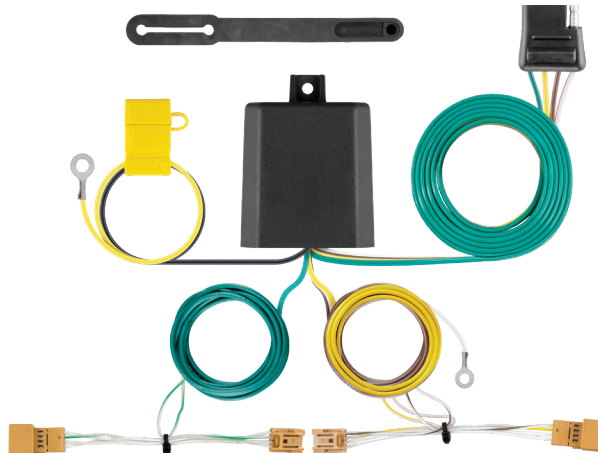
Ratchet	Utility knife
Torx bit, T-20	Wire crimper
Socket extension	Wire stripper
Panel trim removal tool	Flathead screwdriver

⚠ WARNING

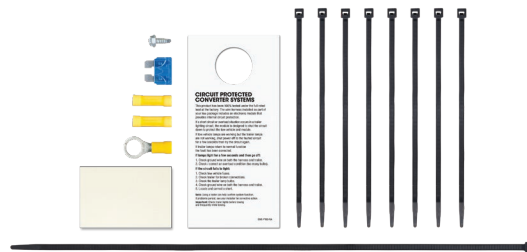
Do not exceed product rating or tow vehicle lamp load rating, whichever is lower.

The battery connection must be fuse-protected, 15-amp max. Exceeding the product rating can cause loss of warranty, overheating and potential fire.

Product Photo



Hardware Photo



NOTICE

Before you begin installation, read all instructions thoroughly.

Proper tools will improve the quality of installation and reduce the time required.

All steps must be followed to ensure the product will function properly. Once installed, test for proper function by using a test light or connecting a properly wired trailer.

Maintenance

Periodic inspection of all wires and connections should be performed to ensure there is no visible damage or loose connections.

Product Registration and Warranty

CURT Group stands behind our products with industry-leading warranties.

Provide feedback and help us to improve our products by registering your purchase at: warranty.curtgroup.com/surveys

Step 1

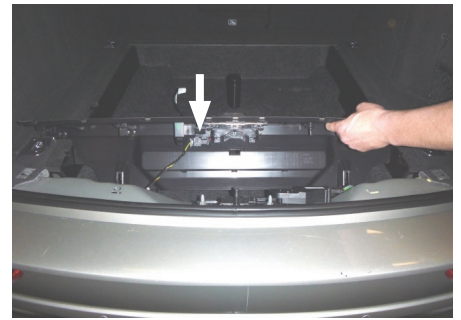
Open the rear lift gate.

Remove all trunk floor coverings.

Remove the trunk storage tray, sub woofer and spare tire. Separate the connectors on the sub woofer taking care not to damage the locking tabs.

Remove the fasteners securing the rear scuff panel. Remove the scuff panel by pulling out on the bottom and then up. Take care not to damage the alignment tabs on the back.

Disconnect the latch sensor connector from the scuff panel.



Step 2

Starting on the driver side, locate and remove the taillight access panel in the rear lift gate.

Locate and remove the fastener behind the taillight access panel.

Repeat on the passenger side of the lift gate.



Step 3

Open center access panel on the lift gate. Locate and remove the two fasteners behind the panel.

Remove the lift gate trim panel by carefully pulling down or using a trim panel removal tool. Take care not to damage any alignment tabs on the back.

Locate and disconnect the connector from the lift gate trim panel. Take care not to damage the locking tabs.



Step 4

On the driver side, locate and remove the trim cover on the lift gate hinge.

Starting on the top near the lift gate hinge, remove the weather stripping. Remove until you reach the lower felt trim panel located inside the cargo area.

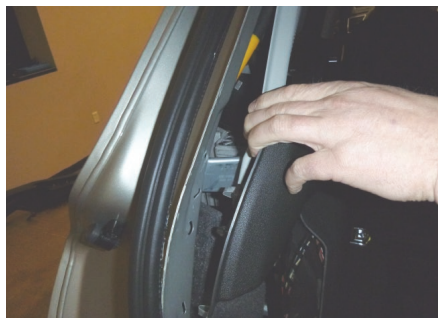


Step 5

Locate and remove the fastener behind the seat latch. Pull out on the side trim panels to locate the push fastener that is holding the upper trim panel in place.

Remove the fastener from the panel.

Carefully pull outwards on the side trim panels to allow routing of the custom wiring harness.



Step 6

From inside the cargo area, route the T-ends of the custom wiring harness behind the vehicle side trim panels, along the removed weather stripping, to the lift gate hinge.

Route the T-end with yellow wire along the lift gate hinge and out under the removed lift gate trim panel to the driver-side taillight connectors.

Route the T-end with the green wire to the passenger-side taillight connectors.

Locate the vehicle taillight wiring harness connectors on the backside of the taillight. The connectors will be similar to those on the custom wiring harness. Separate the connectors from the taillight housing taking care not to damage the locking tabs.



Step 7

On the driver side, insert the custom wiring harness T-end with the yellow wire between the separated taillight and vehicle connectors. Make sure the connectors are fully inserted with locking tabs in place.

Repeat on passenger side with the T-end with the green wire. Use provided cable ties to secure any loose wires while routing the custom wiring harness.

Step 8

Locate a suitable grounding point near the connector such as an existing screw with nut in the vehicle frame or drill a 3/32" pilot hole for the provided screw. The area should be free of rust, dirt and paint. Secure the white ground wire using the ring terminal and provided screw.

WARNING

Check for miscellaneous items that may be hidden behind or under any surface before drilling to avoid damage and / or personal injury.

Step 9

Inside the cargo area behind the side trim access panel, locate a flat spot inside the vehicle, near the taillight. Adhere the black converter box using the provided double-sided tape.

Route the black power wire from the vehicle battery as shown on the last page of this manual.

Check that the custom wiring harness wires are clear of any trim panel mounting points, pinch points or sharp edges. There should be enough slack in the wire for the lift gate to open and close with no harm to the custom wiring harness.

Step 10

Route the 4-flat down along the side trim panel and out the bottom. When in use, route the 4-flat to the center of the vehicle and out of the trunk. When not in use, roll up and store in a convenient, out-of-the way location inside the trunk. Secure any loose wires with the provided cable ties.

Reinstall all items removed during install. Install the provided 4-flat dust cover to help prevent corrosion.

POWERED CONVERTER LEAD INSTRUCTION SHEET

FICHE DE CONSIGNES DU CONVERTISSEUR D'ALIMENTATION

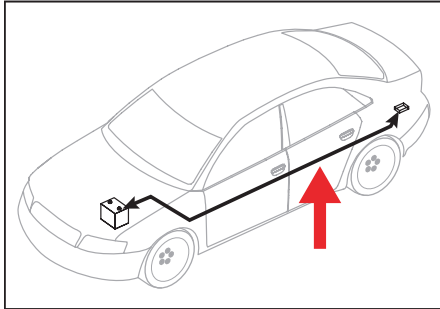
HOJA DE INSTRUCCIONES DEL CONDUCTOR DEL ADAPTADOR ALIMENTADO POR BATERÍA

NOTICE AVIS / AVISO

Illustrations are for reference only. Battery location may differ depending on the vehicle.

Les images ne sont fournies qu'à des fins de référence. L'emplacement de la batterie peut varier en fonction du véhicule.

Las ilustraciones son solo para referencia. La ubicación de la batería puede variar según el vehículo.



WARNING AVERTISSEMENT / ADVERTENCIA

Route 12 GA wire to vehicle battery location, taking care to avoid any pinch points and hot or rotating components.

Acheminer le câble de calibre 12 à la batterie du véhicule en prenant soin d'éviter les points de pincement et les éléments chauds ou pivotants.

Pase el cable calibre 12 hacia la ubicación de la batería del vehículo, con cuidado de evitar atascos y componentes calientes o giratorios.

WARNING AVERTISSEMENT / ADVERTENCIA

To avoid personal injury or property damage, check for miscellaneous items that may be behind or under any surface before drilling.

Pour éviter les blessures et les dommages matériels, vérifier les divers articles qui peuvent se trouver derrière ou sous la surface avant de percer.

Para evitar lesiones personales o daños materiales, verifique que no haya ningún elemento detrás o debajo de la superficie antes de perforar.

NOTICE AVIS / AVISO

1. This converter system is to be used only on 12 volt negative ground systems.
2. Secure power wire to vehicle chassis using cable ties provided.
3. When passing the power wire through sheet metal, use an existing grommet, add a grommet or use silicone to protect the power wire from sharp edges.
4. Overall T-connector design may differ from illustration. The illustration should be used for power lead instruction only. Illustration is not to scale.

1. Ce système de convertisseur ne doit être utilisé qu'avec une prise de masse de polarité négative de 12 volts.
2. Fixer le câble d'alimentation au châssis du véhicule à l'aide des courroies d'attache de câble fournies.
3. Utiliser un œillet existant, ajouter un œillet ou appliquer du silicone pour protéger le câble d'alimentation des rebords tranchants au moment de le passer à travers la tôle.
4. La disposition générale du connecteur en T peut différer de l'illustration. Celle-ci ne doit être utilisée que pour le convertisseur d'alimentation. L'illustration n'est pas à l'échelle.

1. Este sistema de adaptadores solo se debe utilizar con sistemas con polo negativo a masa de 12 voltios.
2. Sujete el cable de alimentación al chasis del vehículo utilizando los sujetacables suministrados.
3. Al pasar el cable de alimentación por la lámina de metal, utilice la arandela pasacable existente, agregue una arandela pasacable o utilice silicona para proteger el cable de alimentación de los bordes filosos.
4. El diseño general del conector T puede ser distinto de la ilustración. La ilustración solo se debe utilizar para la instrucción del conductor de alimentación. La ilustración no está a escala.

