

RV TOW Harness Wiring Kit

INSTALLATION INSTRUCTIONS

Fits: Chevrolet Colorado

Kit Includes:

- (1) Wiring Harness with 4-Flat Connector
- (1) 48" 4-Flat Extension
- (20) 15" Cable Tie
- (1) 4-Flat Bracket
- (3) #8 Self-Tapping Ground Screw

RV TOW HARNESS INSTALLATION INSTRUCTIONS

1. Read instructions thoroughly before beginning.

2. Locate vehicle's taillight connectors located underneath vehicle on the frame near bottom of taillight opening shown in **Figure 1** on both sides of the vehicle. The connectors will be similar to those on the RV harness. Slide the Red lock on the connector and carefully separate the vehicle connectors, taking care not to damage the locking tabs. Inspect connectors for dirt and debris and clean if necessary.

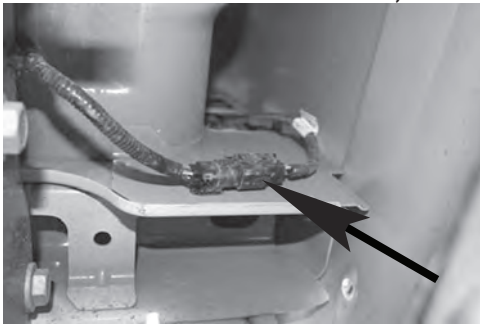


Figure 1

3. Starting on driver's side position RV harness connectors ends containing **Yellow** wires between separated vehicle harness connectors shown in **Figure 2**. Press connectors firmly into vehicle connectors until they lock into place and slide Red lock on factory connector. Pull on connectors to ensure locks are engaged.



Figure 2

4. Locate a clean and accessible mounting location on the vehicle near the RV harness ends within reach of white wire and ring terminal. Remove any debris or undercoating to expose a clean metal surface and drill a 3/32" hole.

Caution: Take care not to drill through the body or any exposed surface.

Attach ring terminal on White wire using ground screw provided.

5. Route portion of RV Harness with connectors containing **Green** wires across frame rail and over spare tire shown in **Figure 3** and **Figure 4**. Route connector ends to vehicle's connectors and repeat Step 3 for connector plugging. Secure RV harness to existing factory wire harness with cable ties provided.

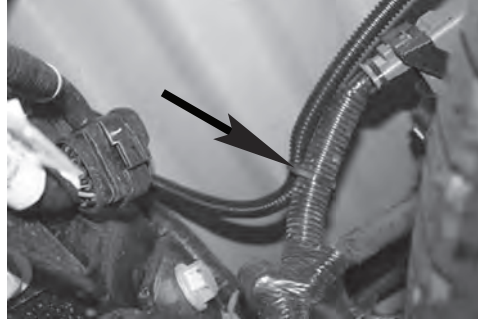


Figure 3

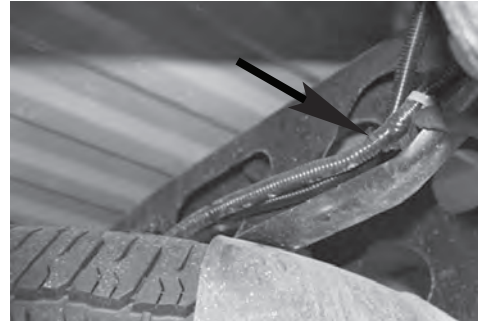


Figure 4

6. Cut the cable ties on 4-Flat portion of harness. Route the 4-Flat portion of the RV harness towards the front of vehicle along the factory wire harness along the frame rail shown in **Figure 5** and **Figure 6** and secure with cable ties provided.

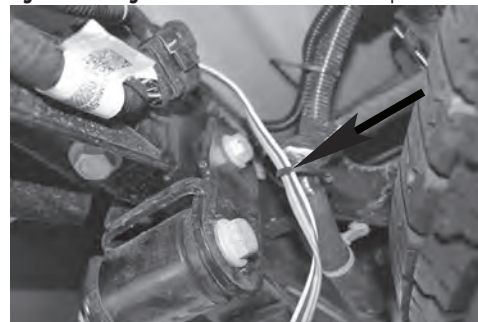


Figure 5



Figure 6

7. Continue routing 4-Flat towards front of vehicle securing to factory wire harness with cable ties provided shown in **Figure 7** until you reach the driver's side front wheel well.

Caution: Make sure to avoid areas that contain moving parts or could cut, pinch or burn the wires when routing the 4-flat harness towards the front of the vehicle. Also avoid routing harness near the fuel lines as it may cause the fuel to ignite.

Failure to follow these warnings may cause property damage, personal injury or loss of life.



Figure 7

8. From inside the engine compartment shown in **Figure 8**, route a fish tape down, over the top of driver's wheel well.

Note: It may be necessary to remove additional clips and screws from wheel well cover. Secure the 4-Flat to the fish tape at other side of driver's front wheel well and pull up and into the engine compartment.



Figure 8

9. Route 4-Flat to area flat surface in engine compartment. Locate a suitable position to mount the 4-Flat bracket shown in **Figure 9**. Using the bracket as a template mark the two holes and drill two 3/32" holes and attach the bracket using the two remaining screws.

Caution: Take care not to drill through the body or any exposed surface.



Figure 9

10. With the 4-flat extension plugged into the RV harness on one end and the motorhome on the other, test that the functions work on the Chevrolet Colorado. These functions will only work on the brake/tail combination lamp.

4-Flat Harness Color Code:

- White - Ground
- Brown - Tail Lights
- Green - Right Turn and Brake Signal
- Yellow - Left Turn and Brake Signal

When not in use store the 4-flat extension in the vehicles glove box.

11. At the rear of the vehicle secure any loose wires using cable ties provided. Re-install taillights and any other items removed during installation.