



# 11530 INSTALLATION INSTRUCTIONS



Safety glasses should be worn at all times while installing this product.

YEARS: 2017-PRESENT

MAKE: BMW

MODEL: X2

STYLE: WAGON



**WARNING: NEVER EXCEED YOUR VEHICLE MANUFACTURER'S RECOMMENDED TOWING CAPACITY**  
For more information log onto [www.curtmfg.com](http://www.curtmfg.com) & for helpful towing tips log onto [www.hitchinfo.com](http://www.hitchinfo.com)

## WEIGHT CARRYING:

TRAILER WEIGHT: 2,000 LBS.  
TONGUE WEIGHT: 200 LBS.

## WARNING:

WE RECOMMEND THE USE OF 18050 STABILIZING STRAPS FOR ALL NON-TRAILER (WHEEL-LESS) LOADS. PLEASE SEE THE CURT CATALOG OR VISIT US ONLINE AT [WWW.CURTMFG.COM](http://WWW.CURTMFG.COM) FOR FURTHER INFORMATION.

**PRO INSTALL TIME: 90 MIN.**

**NOVICE INSTALL TIME: 180 MIN.**

IF YOU ARE HESITANT TO UNDERTAKE THIS TASK ON YOUR OWN, CONTACT AN AUTHORIZED CURT INSTALLER FOR ADDITIONAL ASSISTANCE.



## INSTALLATION REQUIRES:

 RATCHET	 TORQUE WRENCH	 8" SOCKET EXTENSION
 8mm 10mm 18mm SOCKETS	 PRY BAR	 CENTER PUNCH
 PLASTIC RIVET GUN	 SCREW DRIVER	 SAFETY GLASSES

## INSTALLATION TIPS:

1. BEFORE YOU BEGIN INSTALLATION, READ ALL INSTRUCTIONS THOROUGHLY.
2. TO EASE INSTALLATION, 2 PEOPLE MAY BE REQUIRED.
3. USING PROPER TOOLS WILL GREATLY IMPROVE THE QUALITY OF THE INSTALL AND REDUCE THE TIME REQUIRED.
4. NEED HELP OR HAVE SOME QUESTIONS? CALL TECHNICAL SUPPORT AT 800.798.0813

## LEVEL OF DIFFICULTY: CHALLENGING

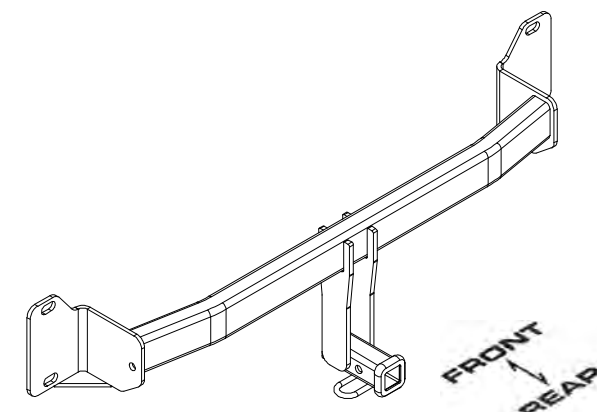
EASY	MODERATE	CHALLENGING
	NO DRILLING REQUIRED	
	TEMPORARILY REMOVE BUMPER AND REAR FASCIA	

## VEHICLE PHOTO:



REPRESENTATIVE PHOTO

## HITCH ILLUSTRATION:



MAKE SURE YOUR HITCH MATCHES



SCAN FOR MORE INFO

**PERIODICALLY CHECK THIS RECEIVER HITCH TO ENSURE ALL FASTENERS ARE TIGHT AND ALL STRUCTURAL COMPONENTS ARE SOUND**

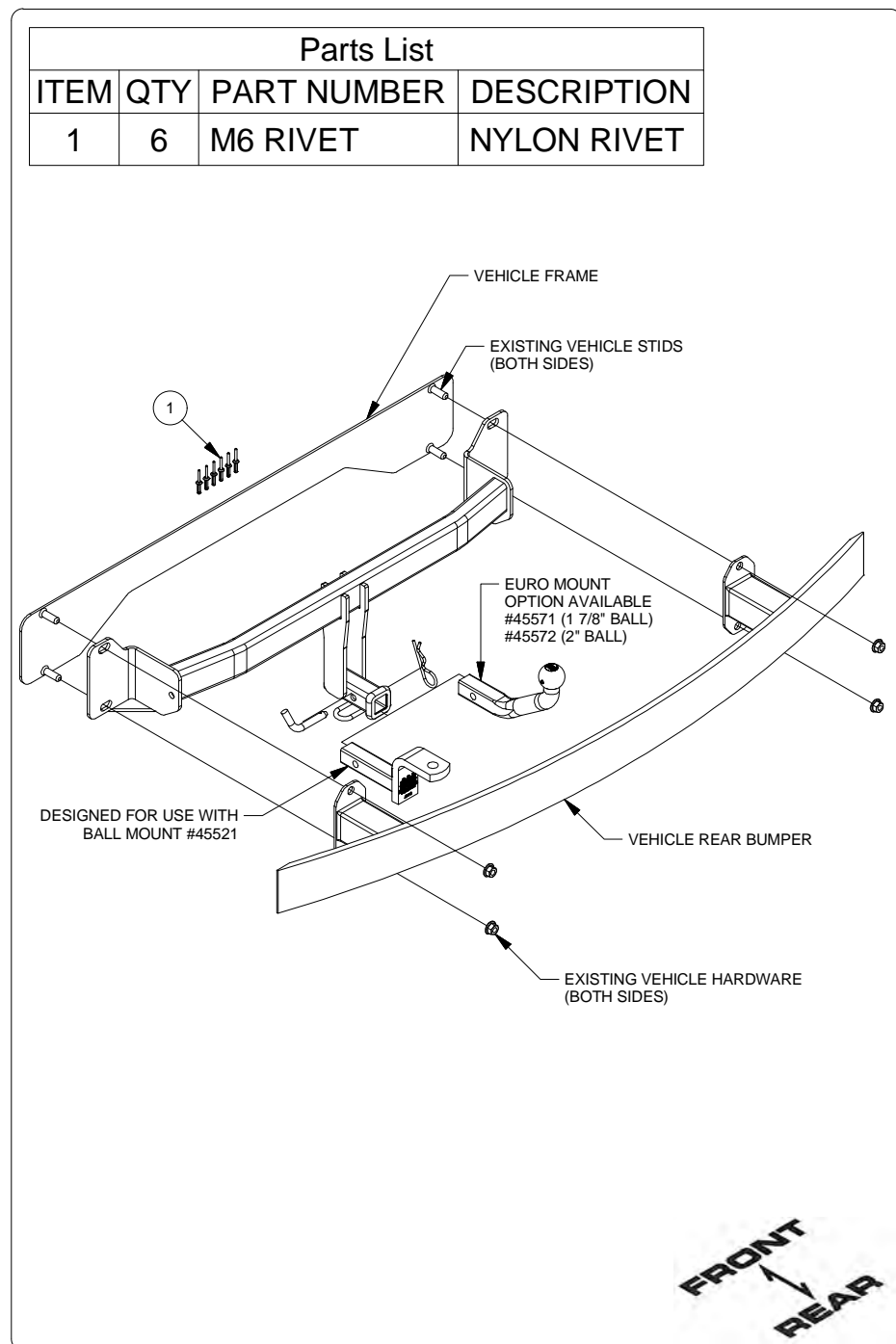
CURT Manufacturing LLC. warrants this product to be free of defects in material and/or workmanship at the time of retail purchase by the original purchaser. If the product is found to be defective, CURT Manufacturing LLC. may repair or replace the product at their option, when the product is returned, prepaid, with proof of purchase. Alteration to, misuse of, or improper installation of this product voids the warranty. CURT Manufacturing LLC.'s liability is limited to repair or replacement of products found to be defective, and specifically excludes liability for incidental or consequential loss or damage.

For more information log onto [www.curtmfg.com](http://www.curtmfg.com), & for helpful towing tips log onto [www.hitchinfo.com](http://www.hitchinfo.com)

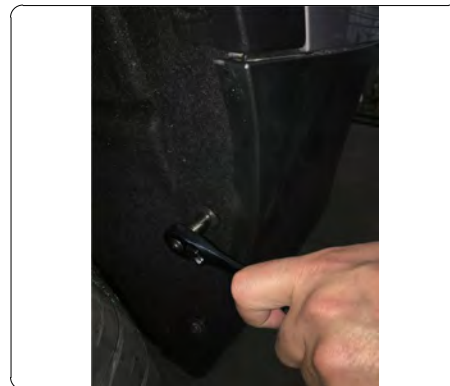
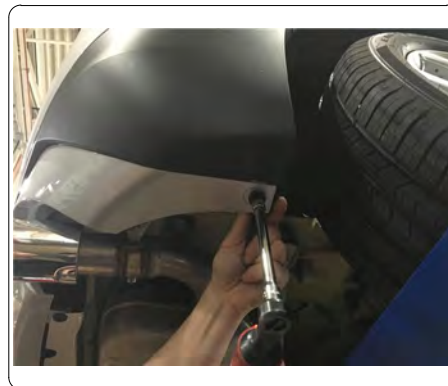
This product complies with safety specifications and requirements for connecting devices and towing systems of the state of New York, V.E.S.C.Regulation V-5 and SAE J684.

5/4/2018

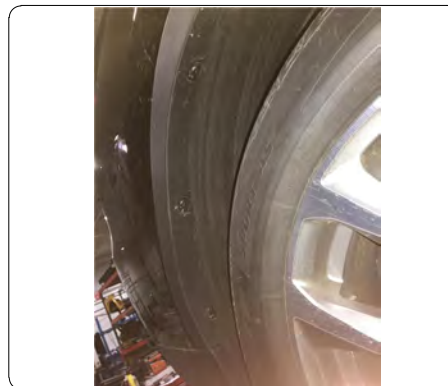
## INSTALLATION WALKTHROUGH:



1. Remove (6) fasteners from bottom of rear fascia using 8mm socket. Also remove (2) fasteners located in each wheel well using 8mm socket.

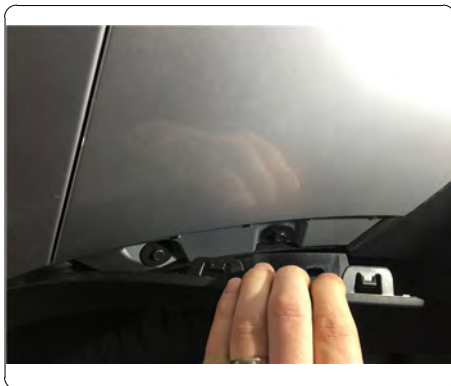
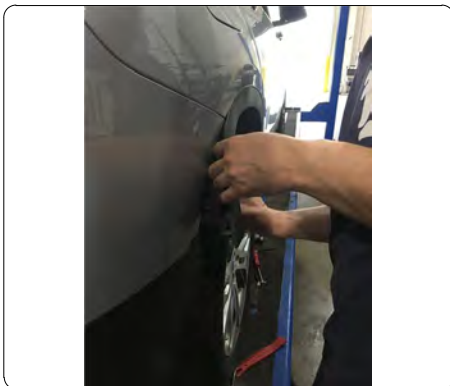


- ↓
2. Remove (3) rivets along wheel well trim above each rear tire using a small punch and pry tool. **NOTE:** Replacement rivets are included.

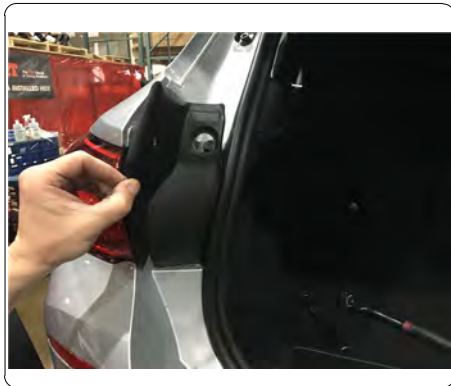
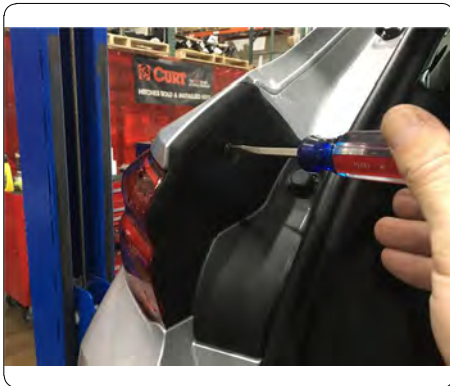


## INSTALLATION WALKTHROUGH:

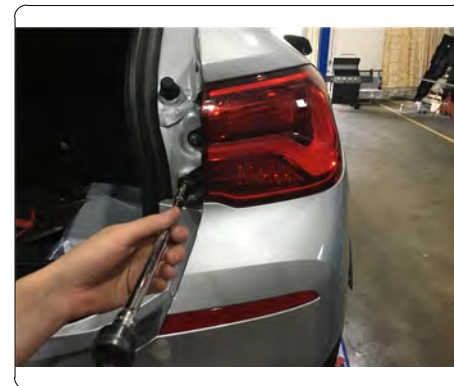
3. Remove (2) fasteners from each side of rear fascia behind wheel well trim using 8mm socket.



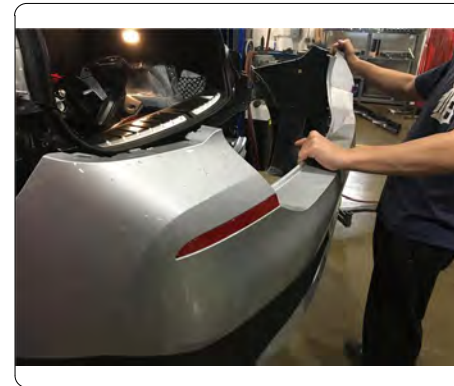
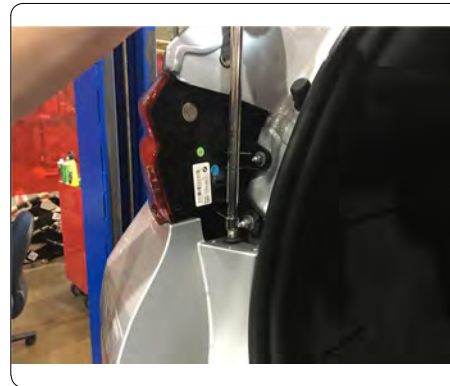
4. Open rear hatch to expose and remove plastic cover located inboard of each tail light, remove (1) fastener on each side flathead screwdriver.



5. Remove (2) bolts from each tail light using 10mm socket. Carefully remove tail light from vehicle and unclip electrical harness.



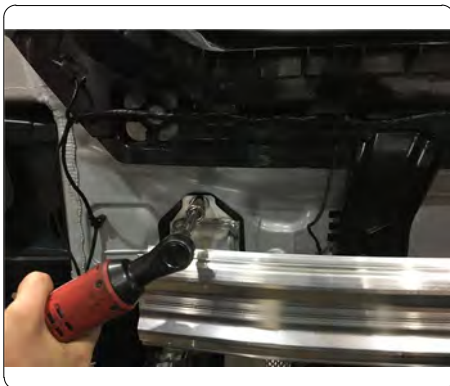
6. Remove rear fascia by locating and removing fastener behind tail light cover using 8mm socket and unclip rear fascia attachments.  
**NOTE:** Unplug electrical sensors if present.





## INSTALLATION WALKTHROUGH:

7. Remove rear bumper beam from vehicle by removing (2) nuts on each side using 18mm socket.  
**NOTE:** If hands free lift gate is present remove (2) fasteners and unclip from vehicle.



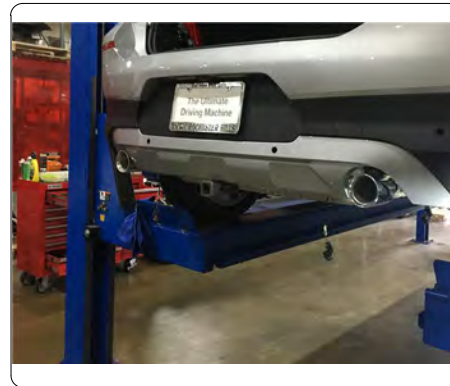
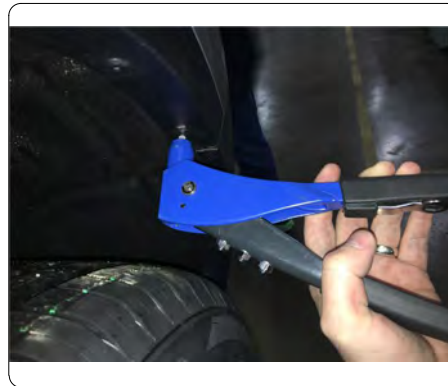
8. Raise hitch into position using studs to align. Reinstall rear bumper beam over hitch and secure using existing vehicle hardware.



9. Torque all M12 hardware to 86 ft-lbs.



10. Reinstall vehicle components removed using steps 1-7 in reverse order.



## TOWING SAFETY INFORMATION

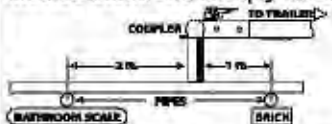
### Gross Trailer Weight / GTW

The Gross Trailer Weight is the weight of the trailer & cargo. Measure this by putting the fully loaded trailer on a vehicle scale.



### Tongue Weight / TW

The downward force that is exerted on the hitch ball by the coupler. The tongue weight will vary depending on where the load is positioned in relationship to the trailer axle(s). To measure the tongue weight, use either a commercial scale or a bathroom scale with the coupler at towing height. When using a bathroom scale with heavier tongue weights, use the method shown and multiply the scale reading by 3.

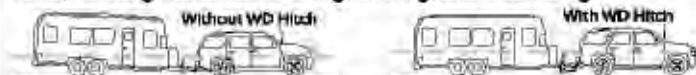


### Weight Carrying / WC

The total weight of both the trailer and the cargo inside. Never exceed the weight capacity of your trailer hitch.

### Weight Distribution / WD




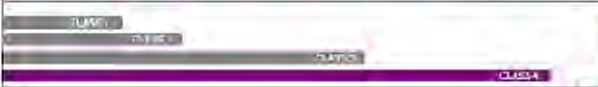
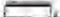


Used to balance the weight of the cargo between the front and rear wheels throughout the trailer, allowing for better steering, braking, and level riding.



### Sway Control

A device used to reduce the lateral movements of the trailer that are caused by the wind. This works in conjunction with a weight distribution hitch. Do not use this on a class 1 or 2 hitch, or with surge brakes.

### How Much Can You Safely Tow?

<b>TONGUE WEIGHT</b> 												
	<b>Tongue weight should be about 10 to 15 percent of the gross trailer weight.</b>											
<b>TRAILER TYPE</b> 	<b>Coupler</b>											
 lbs.	1100	1200	1300	1400	1500	1600						
 lbs.	2100	2400	2700	3000	3300	3600	3900	4200	4500	4800		
 lbs.	2800	3200	3600	4000	4400	4800	5200	5600	6000	6400		
 lbs.												
<b><i>Refer to owner's manual for towing capabilities and limitations.</i></b>												



11530

BMW X2

5/4/2018

GROSS LOAD CAPACITY WHEN USED AS A WEIGHT CARRYING HITCH: 2,000 LBS. TRAILER WEIGHT & 200 LBS. TONGUE WEIGHT.

WARNING: ALL NON-TRAILER (WHEEL-LESS) LOADS APPLIED TO THIS PRODUCT MUST BE SUPPORTED BY 18050 STABILIZING STRAPS.

WARNING: \*\* FAILURE TO PROPERLY SUPPORT NON-TRAILER LOADS WILL VOID PRODUCT WARRANTY \*\*

WARNING: \*\*\* DO NOT EXCEED VEHICLE MANUFACTURER'S RECOMMENDED TOWING CAPACITY \*\*\*

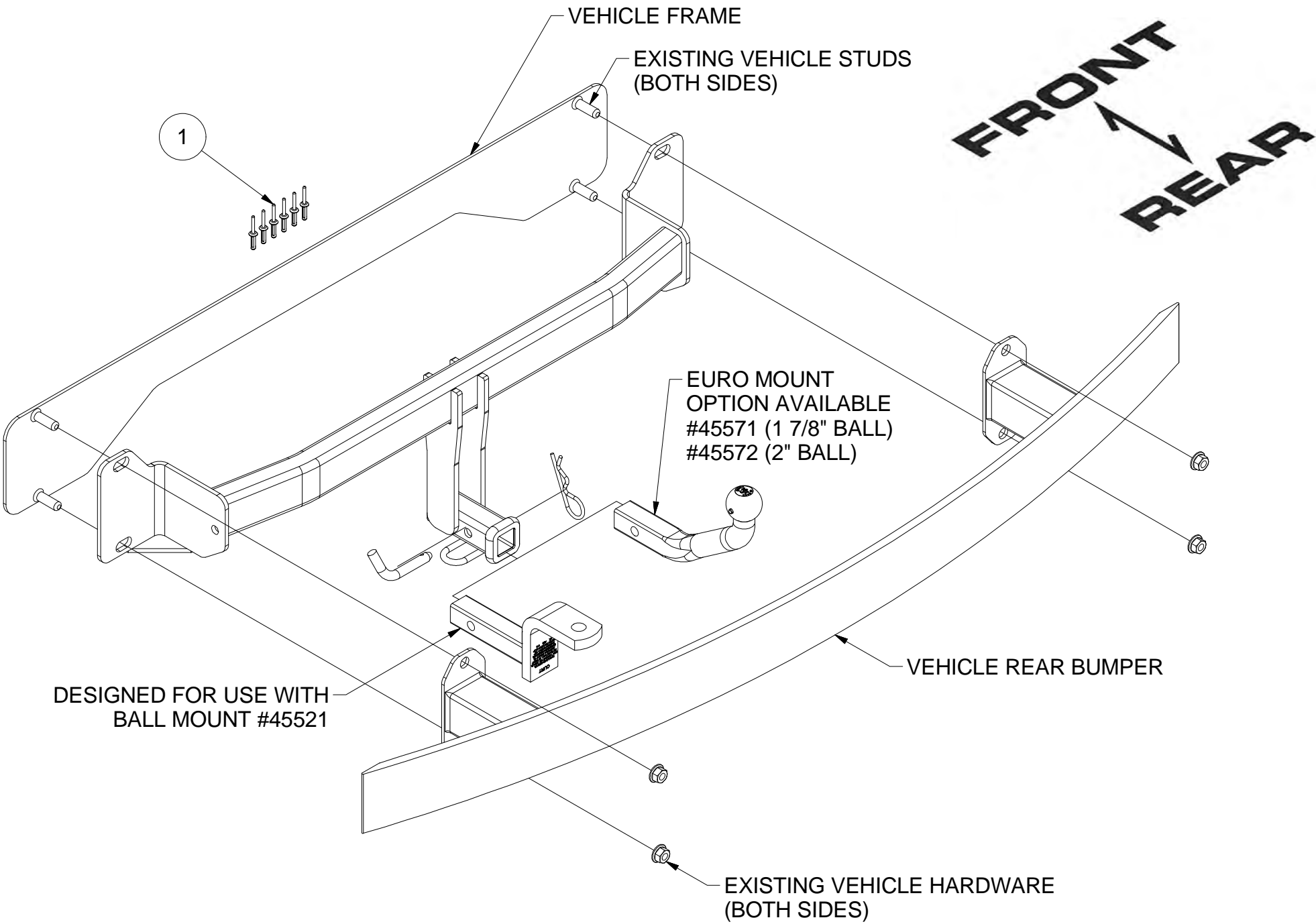
FOR MORE INFORMATION LOG ONTO [WWW.CURTMFG.COM](http://WWW.CURTMFG.COM)

HAVING INSTALLATION QUESTIONS? CALL TECHNICAL SUPPORT AT 1-800-798-0813



Parts List			
ITEM	QTY	PART NUMBER	DESCRIPTION
1	6	M6 RIVET	NYLON RIVET

TOOLS REQUIRED	
RATCHET	
TORQUE WRENCH	
8" SOCKET EXTENSION	
8mm / 10mm / 18mm SOCKETS	
PRY TOOL	
CENTER PUNCH	
PLASTIC RIVET GUN	
SCREW DRIVER	
SAFETY GLASSES	



HITCH WEIGHT: 24 LBS.

INSTALL TIME

PROFESSIONAL: 90 MINUTES

NOVICE (DIY): 180 MINUTES

INSTALL NOTES:

- NO DRILLING REQUIRED
- TEMPORARILY REMOVE BUMPER AND REAR FASCIA

## INSTALLATION STEPS

1. Remove (6) fasteners from bottom of rear fascia using 8mm socket. Also remove (2) fasteners located in each rear wheel well using 8mm socket.
2. Remove (3) rivets along wheel well trim above each rear tire using a small punch and pry tool.  
**NOTE:** Replacement rivets are included.
3. Remove (2) fasteners from each side of rear fascia behind wheel well using 8mm socket.
4. Open rear hatch to expose and remove plastic cover inboard of each tail light, remove (1) fastener flathead screwdriver.
5. Remove (2) bolts from each tail light using 10mm socket. Carefully remove tail light from vehicle and unclip electrical harness.
6. Remove rear fascia by locating and removing fastener behind tail light cover using 8mm socket and unclip rear fascia attachments.  
**NOTE:** Unplug electrical sensors if present.
7. Remove rear bumper beam from vehicle by removing (2) nuts on each side using 18mm socket.  
**NOTE:** If hands free lift gate is present remove (2) fasteners using 8mm socket and unclip from vehicle.
8. Raise hitch into position using studs to align. Reinstall rear bumper over hitch and secure using existing vehicle hardware.
9. Torque all M12 hardware to 86 ft-lbs.
10. Reinstall vehicle components using steps 1-7 in reverse order.



Scan  
for more  
information

PERIODICALLY CHECK THIS RECEIVER HITCH TO ENSURE THAT ALL FASTENERS ARE TIGHT AND THAT ALL STRUCTURAL COMPONENTS ARE SOUND.

CURT Manufacturing LLC., warrants this product to be free of defects in material and/or workmanship at the time of retail purchase by the original purchaser. If the product is found to be defective, CURT Manufacturing LLC., may repair or replace the product, at their option, when the product is returned, prepaid, with proof of purchase. Alteration to, misuse of, or improper installation of this product voids the warranty. CURT Manufacturing LLC.'s liability is limited to repair or replacement of products found to be defective, and specifically excludes liability for incidental or consequential loss or damage.

This product complies with safety specifications and requirements for connecting devices and towing systems of the state of New York, V.E.S.C.Regulation V-5 and SAE J684.