



12120 INSTALLATION INSTRUCTIONS



Safety glasses should be worn at all times while installing this product.

YEARS: 2014

MAKE: ACURA

MODEL: RLX

STYLE: SEDAN

WARNING: NEVER EXCEED YOUR VEHICLE MANUFACTURER'S RECOMMENDED TOWING CAPACITY

WEIGHT CARRYING:
TRAILER WEIGHT: 3500 LBS.
TONGUE WEIGHT: 350 LBS.

WARNING:
WE RECOMMEND THE USE OF 18050 STABILIZING STRAPS FOR ALL NON-TRAILER (WHEEL-LESS) LOADS. PLEASE SEE THE CURT CATALOG OR VISIT US ONLINE AT WWW.CURTMFG.COM FOR FURTHER INFORMATION.

PRO INSTALL TIME: 30 MIN.

NOVICE INSTALL TIME: 60 MIN.

IF YOU ARE HESITANT TO UNDERTAKE THIS TASK ON YOUR OWN, CONTACT AN AUTHORIZED CURT INSTALLER FOR ADDITIONAL ASSISTANCE.

INSTALLATION REQUIRES:



SAFETY GLASSES



SPRAY LUBRICANT



10mm
3/4"
SOCKET



RATCHET



DRILL BIT
17/32"



ROTARY TOOL



TORQUE WRENCH



POWER DRILL



PRY BAR



AVIATION SHEARS

INSTALLATION TIPS:

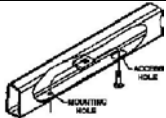
1. BEFORE YOU BEGIN INSTALLATION, READ ALL INSTRUCTIONS THOROUGHLY.
2. TO EASE INSTALLATION, 2 PEOPLE MAY BE REQUIRED.
3. USING PROPER TOOLS WILL GREATLY IMPROVE THE QUALITY OF THE INSTALL AND REDUCE THE TIME REQUIRED.
4. NEED HELP OR HAVE SOME QUESTIONS? CALL TECHNICAL SUPPORT AT 800.798.0813

LEVEL OF DIFFICULTY: MODERATE

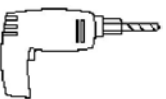
EASY

MODERATE

CHALLENGING



FISHWIRE HARDWARE



DRILLING REQUIRED



TRIM EXHAUST HEAT SHEILD



FRAME HOLE ENLARGEMENT



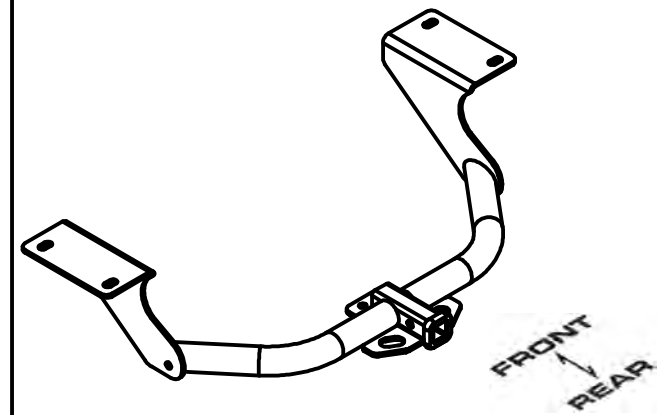
LOWER EXHAUST

VEHICLE PHOTO:



REPRESENTATIVE PHOTO

HITCH ILLUSTRATION:



MAKE SURE YOUR HITCH MATCHES



SCAN FOR
MORE INFO

PERIODICALLY CHECK THIS RECEIVER HITCH TO ENSURE ALL FASTENERS ARE TIGHT AND ALL STRUCTURAL COMPONENTS ARE SOUND CURT Manufacturing LLC. warrants this product to be free of defects in material and/or workmanship at the time of retail purchase by the original purchaser. If the product is found to be defective, Curt Manufacturing LLC. may repair or replace the product at their option, when the product is returned, prepaid, with proof of purchase. Alteration to, misuse of, or improper installation of this product voids the warranty. Curt Manufacturing LLC.'s liability is limited to repair or replacement of products found to be defective, and specifically excludes liability for incidental or consequential loss or damage. For more information log onto www.curtmfg.com, & for helpful towing tips log onto www.hitchinfo.com

INSTALLATION WALKTHROUGH:

Parts List			
ITEM	QTY	PART NUMBER	DESCRIPTION
1	4	1/2-13 x 1 3/4, GR8	CARRIAGE BOLT
2	4	HFN 1213, GR8	HEX FLANGE NUT
3	4	CM-SP6	.188 x 1.00 x 3.00" SQUARE SPACER
4	1	3_8 - 16 x 1.00 WIDE x 2.25	U-BOLT
5	2	3/8 - 16	HEX NUT
6	2	3/8" CONICAL WASHER	CONICAL TOOTHED WASHER
7	4	1_2 FISHWIRE	1/2" FISHWIRE

DESIGNED FOR USE WITH BALL MOUNT #45016 (D-224)

DESIGNED FOR USE WITH EURO BALLMOUNT 45551 (1 7/8") AND 45552 (2" BALL)

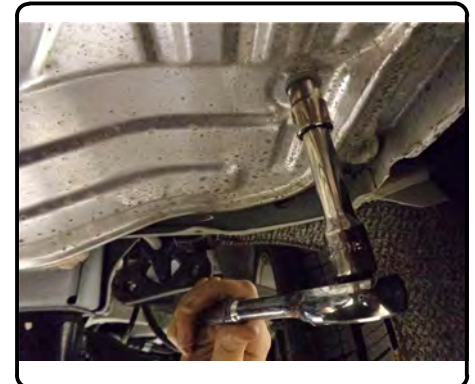
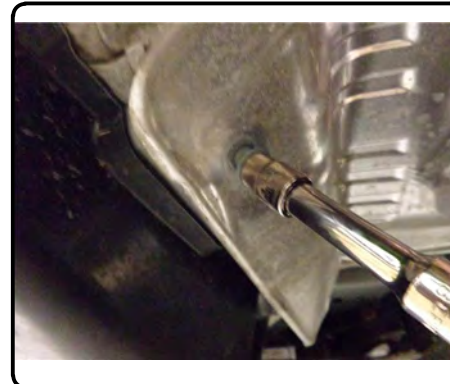
FRONT
REAR

1. Lower exhaust by removing (4) rearmost isolators from the hangers.



2. Remove the heat shields on each side of the car, (8) bolts using the 10mm socket.

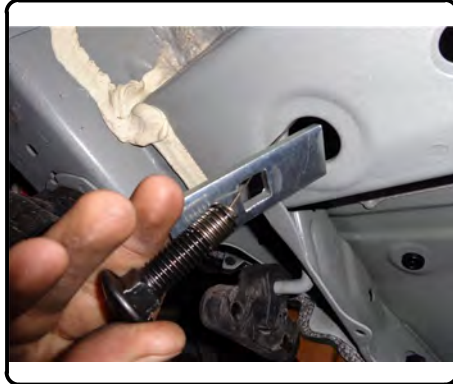
Set heat shields aside for trimming and reassembly.



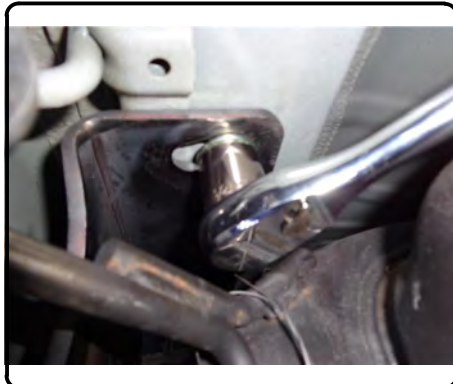
For more information log onto www.curtmfg.com, & for helpful towing tips log onto www.hitchinfo.com

INSTALLATION WALKTHROUGH:

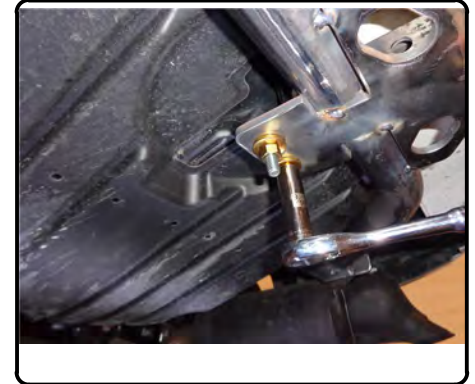
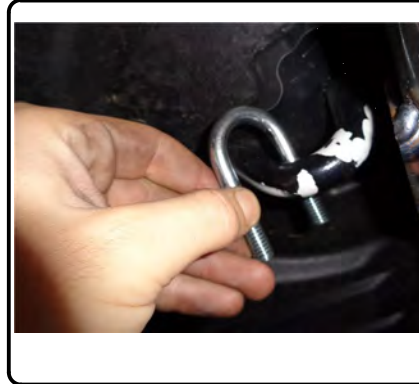
3. Enlarge (1) hole on each frame rail to $\varnothing 1.00$, then using the fishwire install (1) bolt with spacer in each frame rail. Using the fishwire feed, the spacer and 1/2" bolt into location. Raise hitch into position and loosely secure with 1/2" flange nuts.



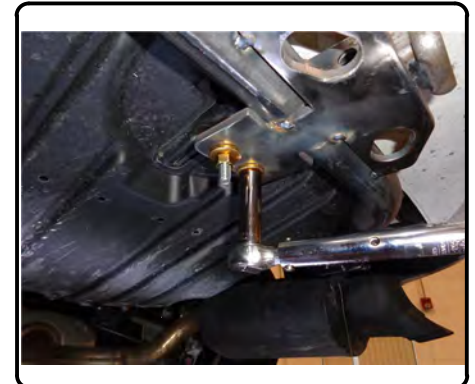
4. Drill (1) hole in each side of the frame rail for the remaining 1/2" fasteners using the hitch front mounting hole as a template. Fish remaining 1/2" bolts and spacers into location using the same technique shown in Step 3.



5. Install the U-bolt through the vehicle tow hook and hitch as shown below, install both washers and nuts evenly.

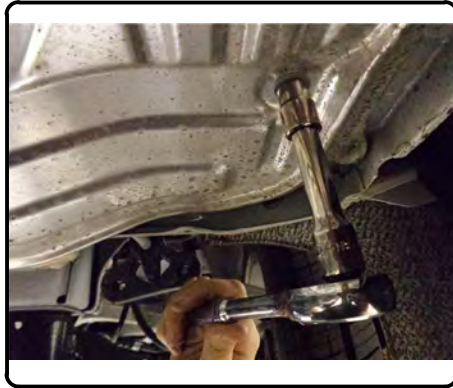


6. Torque all 1/2" fasteners to 110 lb-ft and 3/8" fasteners to 37 lb-ft.



INSTALLATION WALKTHROUGH:

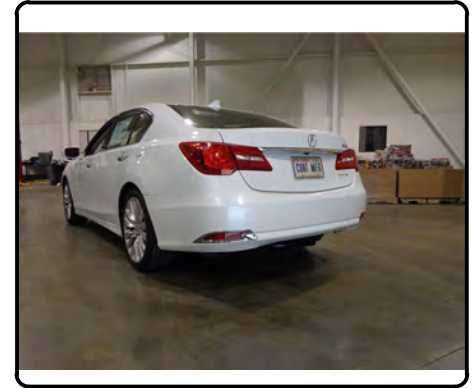
7. Trim each heat shield to clear the hitch and reinstall.



8. Move exhaust back into location, and reinstall rubber exhaust hangers.



9. Installation complete



TOWING SAFETY INFORMATION

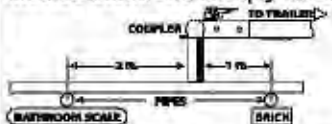
Gross Trailer Weight / GTW

The Gross Trailer Weight is the weight of the trailer & cargo. Measure this by putting the fully loaded trailer on a vehicle scale.



Tongue Weight / TW

The downward force that is exerted on the hitch ball by the coupler. The tongue weight will vary depending on where the load is positioned in relationship to the trailer axle(s). To measure the tongue weight, use either a commercial scale or a bathroom scale with the coupler at towing height. When using a bathroom scale with heavier tongue weights, use the method shown and multiply the scale reading by 3.

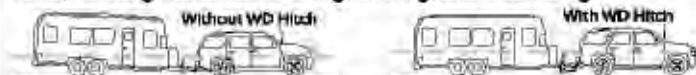


Weight Carrying / WC

The total weight of both the trailer and the cargo inside. Never exceed the weight capacity of your trailer hitch.

Weight Distribution / WD

Used to balance the weight of the cargo between the front and rear wheels throughout the trailer, allowing for better steering, braking, and level riding.



Sway Control

A device used to reduce the lateral movements of the trailer that are caused by the wind. This works in conjunction with a weight distribution hitch. Do not use this on a class 1 or 2 hitch, or with surge brakes.

How Much Can You Safely Tow?

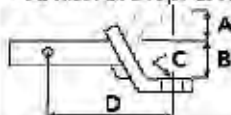
TRAILER TYPE	TONGUE WEIGHT (lb.)									
	1100	1200	1300	1400	1500	1600				
Coupler										
1100										
1200										
1300										
1400										
1500										
1600										
1700										
1800										
1900										
2000										
2100										
2200										
2300										
2400										
2500										
2600										
2700										
2800										
2900										
3000										
3100										
3200										
3300										
3400										
3500										
3600										
3700										
3800										
3900										
4000										
4100										
4200										
4300										
4400										
4500										
4600										
4700										
4800										
4900										
5000										
5100										
5200										
5300										
5400										
5500										
5600										
5700										
5800										
5900										
6000										
6100										
6200										
6300										
6400										
6500										
6600										
6700										
6800										
6900										
7000										
7100										
7200										
7300										
7400										
7500										
7600										
7700										
7800										
7900										
8000										
8100										
8200										
8300										
8400										
8500										
8600										
8700										
8800										
8900										
9000										
9100										
9200										
9300										
9400										
9500										
9600										
9700										
9800										
9900										
10000										

Refer to owner's manual for towing capabilities and limitations.

Ball Mount

The ball mount is placed inside the opening of the receiver hitch which is mounted to the vehicle. Make sure a hitch pin and clip is properly securing the ball mount to the receiver hitch before you begin towing.

• A: Rise. B: Drop. C: Hole Size. D: Length.



Trailer Ball

The connection from the hitch to the trailer. There are many factors that determine the correct hitch ball:

- Number one is the hitch ball's gross trailer weight rating.
- The mounting platform must be at least 3/8" thick.
- The hole diameter must not be more than 1/16" larger than the threaded shank.
- Every time you tow, check the nut and lock washer to make sure they are fastened securely.

• A: Ball Dia. B: Shank Length. C: Shank Dia. D: Shank Rise.



Coupler

The component that is placed over the trailer ball to connect the vehicle to the trailer. Be sure that the coupler size matches the size of the hitch ball and that the coupler handle is securely fastened. To determine what size hitch ball you need for your application you will need to know the size of coupler that is on the trailer. Be sure your coupler is properly adjusted to the ball you are using.

NOTE: For added security the use of safety devices such as Coupler Safety Pins and Locks is strongly recommended.

Safety Chains

Safety chains are a requirement and should be crossed under the tongue of the trailer so that the tongue will not drop to the road if it becomes separated from the hitch. Always leave enough slack so you can turn. Never allow the safety chains to drag on the ground and never attach the chains to the bumper.

Trailer Classification: Safety Chain Breaking Force - Minimum

Class 1: 2,000 lbs. (8.9 kN)

Class 2: 3,500 lbs. (15.6 kN)

Class 3: 5,000 lbs. (22.2 kN)

The strength rating of each length of safety chain or its equivalent and its attachments shall be equal to or exceed in minimum breaking force the GVWR (Gross Vehicle Weight Rating) of the trailer.

Electrical

Trailer lights, Electric Brakes, Break-away systems - Every time you tow, be sure to check that all components are working properly.

Wiring identification by color:

7-WAY					
6-WAY					
5-WAY					
4-WAY					
GREEN	YELLOW	BROWN	WHITE	RED	BLUE
RIGHT TURN & BRAKE	LEFT TURN & BRAKE	TAILLIGHTS	GROUND	AUXILIARY POWER	ELECTRIC BRAKES
					PURPLE
					BACK-UP LIGHTS

CURT DISCLAIMER: WIRING COLOR SHOWN WORK IN CONJUNCTION WITH CURT MANUFACTURING PRODUCTS.

12120

ACURA RLX

1/24/14

GROSS LOAD CAPACITY WHEN USED AS A WEIGHT CARRYING HITCH: 3500 LBS. TRAILER WEIGHT & 350 LBS. TONGUE WEIGHT.

DO NOT EXCEED VEHICLE MANUFACTURER'S RECOMMENDED TOWING CAPACITY.

WARNING: ALL NON-TRAILER LOADS APPLIED TO THIS PRODUCT MUST BE SUPPORTED BY 18050 STABILIZING STRAPS.

** FAILURE TO PROPERLY SUPPORT NON-TRAILER LOADS WILL VOID PRODUCT WARRANTY**

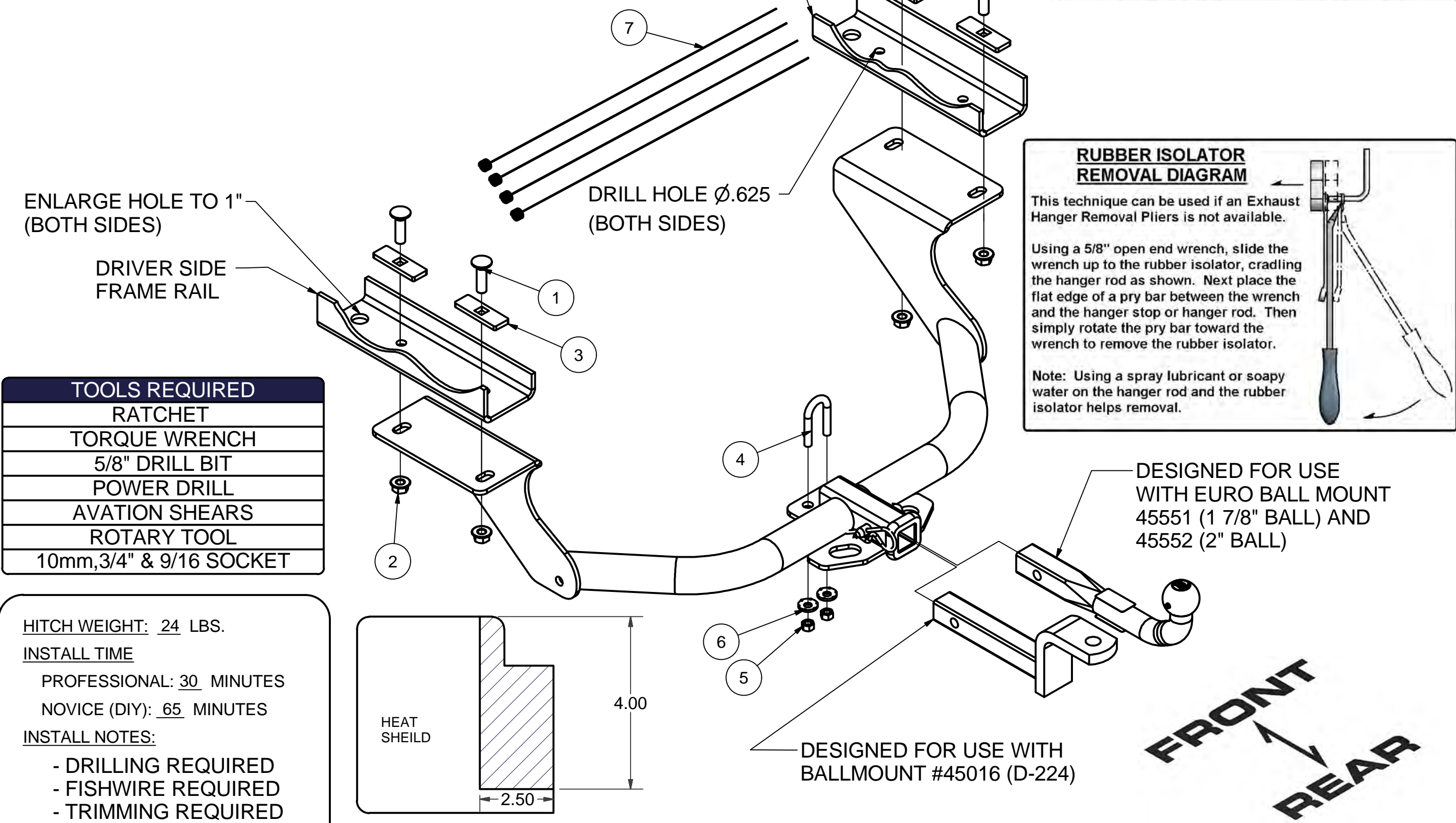
HAVING INSTALLATION QUESTIONS? CALL TECHNICAL SUPPORT AT 1-800-798-0813

Parts List			
ITEM	QTY	PART NUMBER	DESCRIPTION
1	4	1/2-13 x 1 3/4, GR8	CARRIAGE BOLT
2	4	HFN 1213, GR8	HEX FLANGE NUT
3	4	CM-SP6	.250 x 1.00 x 3.00" SQUARE HOLE SPACER
4	1	3_8 - 16 x 1.00 WIDE x 2.25 U-BOLT	U-BOLT
5	2	3/8 - 16	HEX NUT
6	2	3/8" CONICAL WASHER	CONICAL TOOTHED WASHER
7	4	1_2 FISHWIRE	1/2" FISHWIRE

FISHWIRE TECHNIQUE

INSERT COILED END OF FISHWIRE TOOL THROUGH HITCH MOUNTING HOLE IN VEHICLE FRAME RAIL AND OUT THE ACCESS HOLE. PASS COILED END OF FISHWIRE THROUGH SPACER AND THREAD BOLT INTO COIL. KINK WIRE TO KEEP SPACER SEPERATE FROM BOLT AS SHOWN. PULL FISHWIRE, SPACER, AND BOLT THROUGH FRAME AND OUT MOUNTING HOLE. USE FISHWIRE TO GUIDE HITCH DURING MOUNTING AND PREVENT LOSS OF BOLT / SPACER INSIDE FRAME RAIL.

NOTE: SOME VEHICLES MAY FISHWIRE THROUGH END OF FRAME



INSTALLATION STEPS

1. Lower exhaust by removing (4) rearmost isolators from the hangers.
2. Remove the heat shields on each side of the car, (8) bolts using 10mm socket.
- 3.Enlarge (1) hole on each frame rail to Ø1.00, then using the fishwire install (1) bolt with spacer in each frame rail. Using the fishwire feed, the spacer and 1/2" bolt into location. Raise hitch into postion and loosely secure with 1/2" flange nuts.
4. Drill (1) hole in each side of the frame rail for the remaining 1/2" fastners using the hitch front mounting hole as a template. Fish remaining 1/2"bolts and spacers into location using the same technique shown in Step 3.
5. Install the U-bolt through the vehicle tow hook and hitch as shown below, install both washers and nuts evenly.
6. Torque all 1/2" fasteners to 110 lb-ft and 3/8" fasteners to 37 lb-ft.
7. Trim each heat shield to clear the hitch and reinstall.
8. Move exhaust back into location, and reinstall rubber exhaust hangers.

PERIODICALLY CHECK THIS RECEIVER HITCH TO ENSURE THAT ALL FASTENERS ARE TIGHT AND THAT ALL STRUCTURAL COMPONENTS ARE SOUND.

Curt Manufacturing LLC., warrants this product to be free of defects in material and/or workmanship at the time of retail purchase by the original purchaser. If the product is found to be defective, Curt Manufacturing LLC., may repair or replace the product, at their option, when the product is returned, prepaid, with proof of purchase. Alteration to, misuse of, or improper installation of this product voids the warranty. Curt Manufacturing LLC.'s liability is limited to repair or replacement of products found to be defective, and specifically excludes liability for incidental or consequential loss or damage.