



12173

INSTALLATION INSTRUCTIONS



Safety glasses should be worn at all times while installing this product.

YEARS: 2018 - PRESENT

MAKE: BUICK

MODEL: REGAL TOUR X

STYLE: WAGON



WARNING: NEVER EXCEED YOUR VEHICLE MANUFACTURER'S RECOMMENDED TOWING CAPACITY
For more information log onto www.curtmfg.com & for helpful towing tips log onto www.hitchinfo.com

WEIGHT CARRYING:

TRAILER WEIGHT: 3,500 LBS.
TONGUE WEIGHT: 350 LBS.

WARNING:

WE RECOMMEND THE USE OF 18050 STABILIZING STRAPS FOR ALL NON-TRAILER (WHEEL-LESS) LOADS. PLEASE SEE THE CURT CATALOG OR VISIT US ONLINE AT WWW.CURTMFG.COM FOR FURTHER INFORMATION.

PRO INSTALL TIME: 30 MIN.

NOVICE INSTALL TIME: 60 MIN.

IF YOU ARE HESITANT TO UNDERTAKE THIS TASK ON YOUR OWN, CONTACT AN AUTHORIZED CURT INSTALLER FOR ADDITIONAL ASSISTANCE.





INSTALLATION REQUIRES:

		 8" SOCKET EXTENSION
 7mm 15mm 11/16"		
		

INSTALLATION TIPS:

1. BEFORE YOU BEGIN INSTALLATION, READ ALL INSTRUCTIONS THOROUGHLY.
2. TO EASE INSTALLATION, 2 PEOPLE MAY BE REQUIRED.
3. USING PROPER TOOLS WILL GREATLY IMPROVE THE QUALITY OF THE INSTALL AND REDUCE THE TIME REQUIRED.
4. NEED HELP OR HAVE SOME QUESTIONS? CALL TECHNICAL SUPPORT AT 800.798.0813

LEVEL OF DIFFICULTY: MODERATE

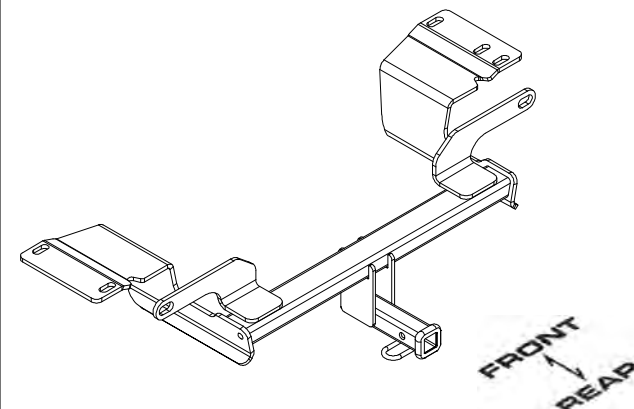
EASY	MODERATE	CHALLENGING
	NO DRILLING REQUIRED	
	TRIM HEAT SHIELD	
	LOWER EXHAUST	
	REMOVE HEAT SHIELD	

VEHICLE PHOTO:



REPRESENTATIVE PHOTO

HITCH ILLUSTRATION:



MAKE SURE YOUR HITCH MATCHES



SCAN FOR
MORE INFO

PERIODICALLY CHECK THIS RECEIVER HITCH TO ENSURE ALL FASTENERS ARE TIGHT AND ALL STRUCTURAL COMPONENTS ARE SOUND

CURT Manufacturing LLC. warrants this product to be free of defects in material and/or workmanship at the time of retail purchase by the original purchaser. If the product is found to be defective, CURT Manufacturing LLC. may repair or replace the product at their option, when the product is returned, prepaid, with proof of purchase. Alteration to, misuse of, or improper installation of this product voids the warranty. CURT Manufacturing LLC.'s liability is limited to repair or replacement of products found to be defective, and specifically excludes liability for incidental or consequential loss or damage.

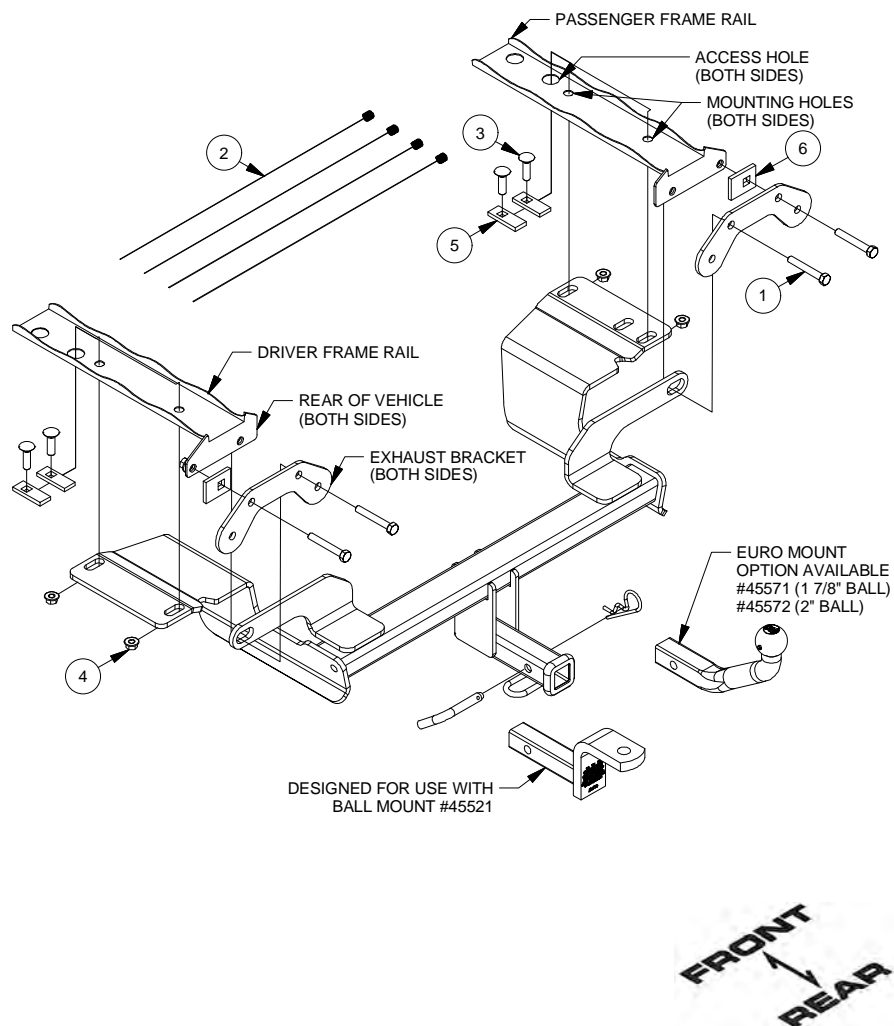
For more information log onto www.curtmfg.com, & for helpful towing tips log onto www.hitchinfo.com

This product complies with safety specifications and requirements for connecting devices and towing systems of the state of New York, V.E.S.C.Regulation V-5 and SAE J684.

6/14/2018

INSTALLATION WALKTHROUGH:

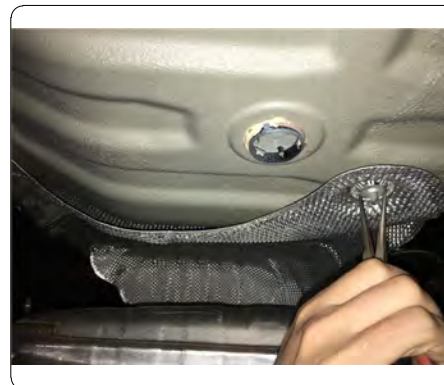
Parts List			
ITEM	QTY	PART NUMBER	DESCRIPTION
1	4	M10 - 1.5 x 65 HEX	HEX BOLT
2	4	7_16 FISHWIRE	7/16" FISHWIRE
3	4	7/16-14 x 1 1/2	CARRIAGE BOLT
4	4	7/16-14	HEX FLANGE NUT
5	4	CM-SP2	.250 x .88 x 2.25" SQUARE HOLE SPACER
6	2	CM-SP1	.250 x 1.50 x 2.00" SQUARE HOLE SPACER



- Lower exhaust using 15mm socket to remove (2) bolts attaching the exhaust bracket to rear of vehicle, on each side.
NOTE: Support exhaust to avoid damage.



- Remove heat shield using needle nose pliers to loosen (4) speed nuts on driver side and (2) speed nuts on passenger. Trim heat shield using aviation shears as shown in Heat Shield Trim Diagram. Reinstall trimmed heat shield.
NOTE: All dimensions are approximate, confirm fit prior to trimming.



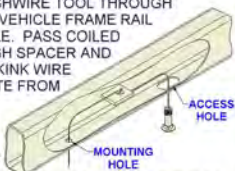
HEAT SHIELD TRIM DIAGRAM



INSTALLATION WALKTHROUGH:

3. Fishwire (2) 7/16 carriage bolts and (2) CM-SP2 through access hole and out mounting holes on each side as shown in the Fishwire Technique Diagram. Reinstall trimmed heat shield.

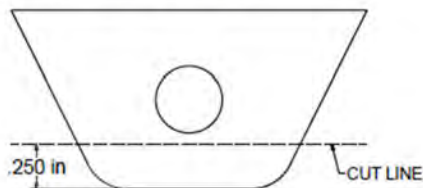
FISHWIRE TECHNIQUE
INSERT COILED END OF FISHWIRE TOOL THROUGH HITCH MOUNTING HOLE IN VEHICLE FRAME RAIL AND OUT THE ACCESS HOLE. PASS COILED END OF FISHWIRE THROUGH SPACER AND THREAD BOLT INTO COIL. KINK WIRE TO KEEP SPACER SEPARATE FROM BOLT AS SHOWN. PULL FISHWIRE, SPACER, AND BOLT THROUGH FRAME AND OUT MOUNTING HOLE. USE FISHWIRE TO GUIDE HITCH DURING MOUNTING AND PREVENT LOSS OF BOLT / SPACER INSIDE FRAME RAIL.
NOTE: SOME VEHICLES MAY FISHWIRE THROUGH END OF FRAME



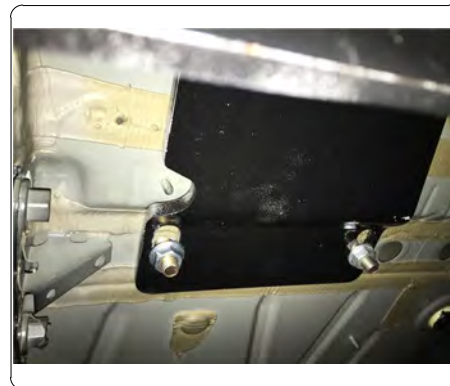
4. Remove (1) screw on each side using 7mm socket attaching rear fascia to vehicle.
NOTE: Trimming center fascia tab as shown in Fascia Tab Trim Diagram may ease installation.



FASCIA TAB TRIM DIAGRAM



5. Raise hitch into position and secure using (2) 7/16 flange nuts on each side.
NOTE: Bending exhaust bracket hanger down and away from mounting area may ease installation.



6. Reinstall vehicle exhaust bracket on hitch mounting plate and secure using (2) M10 x 70 and (1) CM-SP1 on each side.



INSTALLATION WALKTHROUGH:

7. Torque all 7/16 hardware to 59 ft-lbs and all M10 hardware to 45 ft-lbs.



Installation Complete



For more information log onto www.curtmfg.com, & for helpful towing tips log onto www.hitchinfo.com

TOWING SAFETY INFORMATION

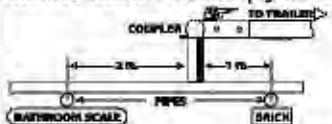
Gross Trailer Weight / GTW

The Gross Trailer Weight is the weight of the trailer & cargo. Measure this by putting the fully loaded trailer on a vehicle scale.



Tongue Weight / TW

The downward force that is exerted on the hitch ball by the coupler. The tongue weight will vary depending on where the load is positioned in relationship to the trailer axle(s). To measure the tongue weight, use either a commercial scale or a bathroom scale with the coupler at towing height. When using a bathroom scale with heavier tongue weights, use the method shown and multiply the scale reading by 3.

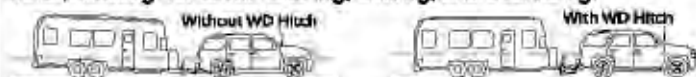


Weight Carrying / WC

The total weight of both the trailer and the cargo inside. Never exceed the weight capacity of your trailer hitch.

Weight Distribution / WD


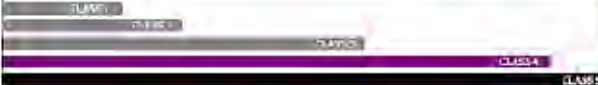





Used to balance the weight of the cargo between the front and rear wheels throughout the trailer, allowing for better steering, braking, and level riding.



Sway Control

A device used to reduce the lateral movements of the trailer that are caused by the wind. This works in conjunction with a weight distribution hitch. Do not use this on a class 1 or 2 hitch, or with surge brakes.

How Much Can You Safely Tow?

TONGUE WEIGHT 										
Tongue weight should be about 10 to 15 percent of the gross trailer weight.										
										
TRAILER TYPE 										
Camper										
 lbs	1100	1200	1300	1400	1500	1600				
W/coupler										
 lbs	2100	2400	2700	3000	3300	3600	3900	4200	4500	4800
W/coupler										
 lbs	2800	3200	3600	4000	4400	4800	5200	5600	6000	6400
24" Wheel										
 lbs										
Refer to owner's manual for towing capabilities and limitations.										

12173

BUICK REGAL TOUR X

6/14/2018

GROSS LOAD CAPACITY WHEN USED AS A WEIGHT CARRYING HITCH: 3,500 LBS. TRAILER WEIGHT & 350 LBS. TONGUE WEIGHT.

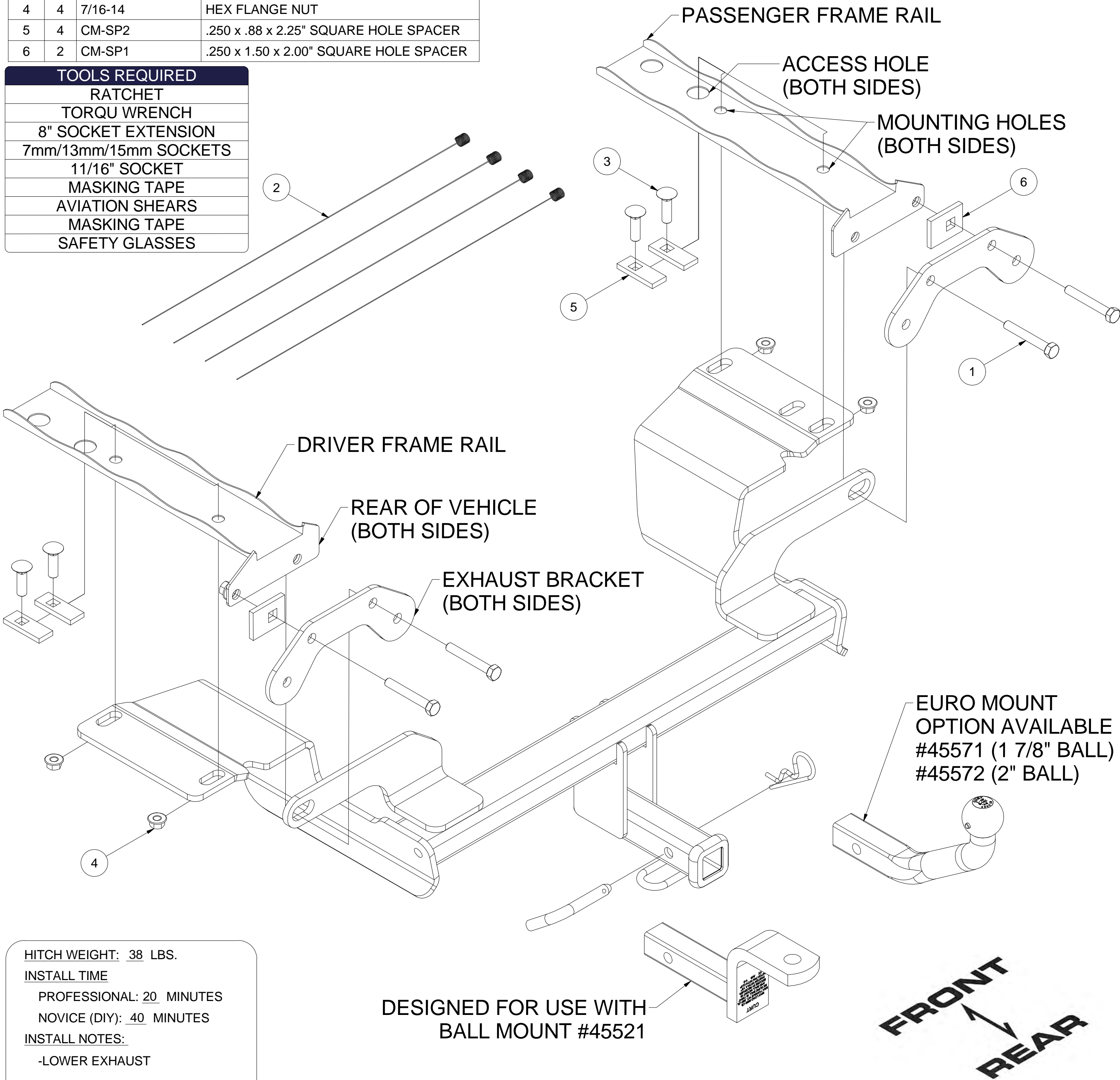


WARNING: *** DO NOT EXCEED VEHICLE MANUFACTURER'S RECOMMENDED TOWING CAPACITY. ***
FOR MORE INFORMATION LOG ONTO WWW.CURTMFG.COM & FOR HELPFUL TOWING TIPS LOG ONTO WWW.HITCHINFO.COM
HAVING INSTALLATION QUESTIONS? CALL TECHNICAL SUPPORT AT 1-800-798-0813



Parts List			
ITEM	QTY	PART NUMBER	DESCRIPTION
1	4	M10 - 1.5 x 65 HEX	HEX BOLT
2	4	7_16 FISHWIRE	7/16" FISHWIRE
3	4	7/16-14 x 1 1/2	CARRIAGE BOLT
4	4	7/16-14	HEX FLANGE NUT
5	4	CM-SP2	.250 x .88 x 2.25" SQUARE HOLE SPACER
6	2	CM-SP1	.250 x 1.50 x 2.00" SQUARE HOLE SPACER

TOOLS REQUIRED	
RATCHET	
TORQU WRENCH	
8" SOCKET EXTENSION	
7mm/13mm/15mm SOCKETS	
11/16" SOCKET	
MASKING TAPE	
AVIATION SHEARS	
MASKING TAPE	
SAFETY GLASSES	



HITCH WEIGHT: 38 LBS.

INSTALL TIME

PROFESSIONAL: 20 MINUTES

NOVICE (DIY): 40 MINUTES

INSTALL NOTES:

-LOWER EXHAUST

-TRIM REQUIRED

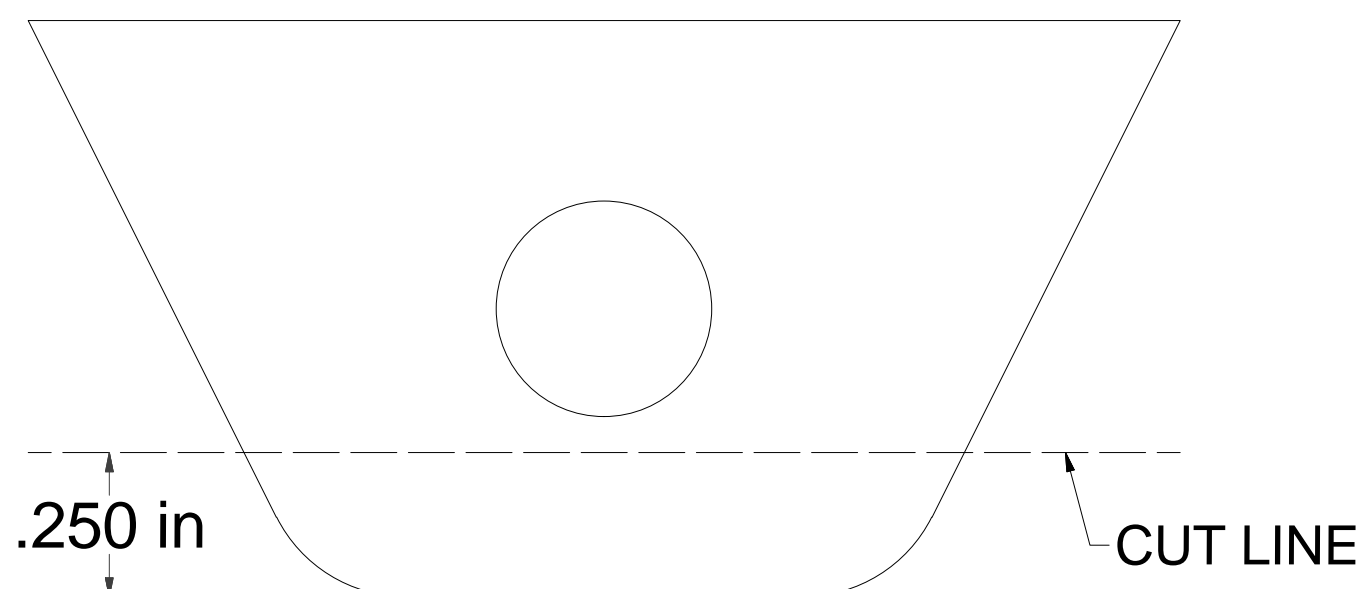
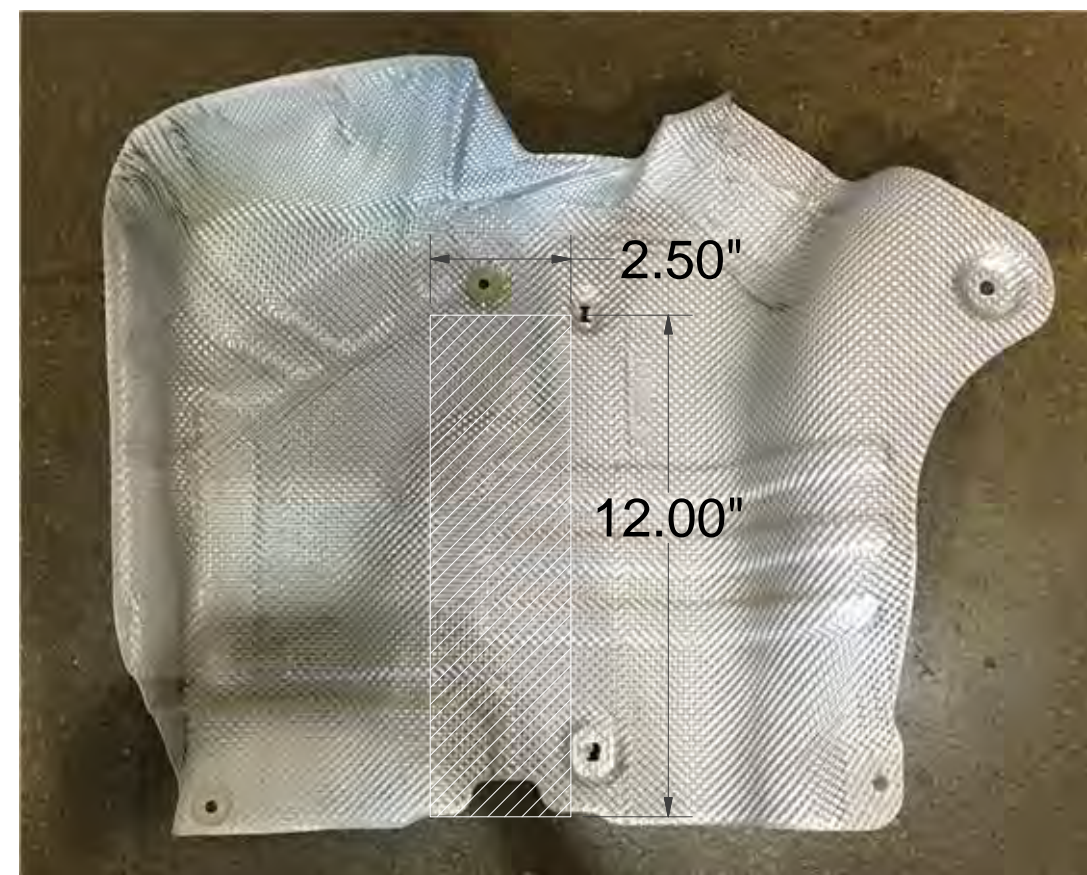
PERIODICALLY CHECK THIS RECEIVER HITCH TO ENSURE THAT ALL FASTENERS ARE TIGHT AND THAT ALL STRUCTURAL COMPONENTS ARE SOUND.



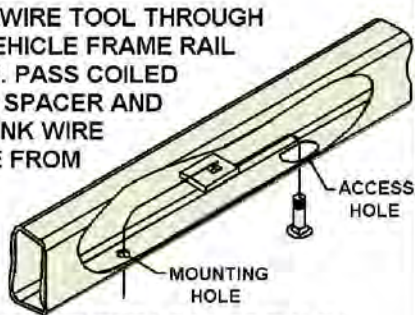
Scan for more information

CURT Manufacturing LLC., warrants this product to be free of defects in material and/or workmanship at the time of retail purchase by the original purchaser. If the product is found to be defective, CURT Manufacturing LLC., may repair or replace the product, at their option, when the product is returned, prepaid, with proof of purchase. Alteration to, misuse of, or improper installation of this product voids the warranty. CURT Manufacturing LLC.'s liability is limited to repair or replacement of products found to be defective, and specifically excludes liability for incidental or consequential loss or damage.

This product complies with safety specifications and requirements for connecting devices and towing systems of the state of New York, V.E.S.C.Regulation V-5 and SAE J684.

FASCIA TAB TRIM DIAGRAM**HEAT SHIELD TRIM DIAGRAM****FISHWIRE TECHNIQUE**

INSERT COILED END OF FISHWIRE TOOL THROUGH HITCH MOUNTING HOLE IN VEHICLE FRAME RAIL AND OUT THE ACCESS HOLE. PASS COILED END OF FISHWIRE THROUGH SPACER AND THREAD BOLT INTO COIL. KINK WIRE TO KEEP SPACER SEPERATE FROM BOLT AS SHOWN. PULL FISHWIRE, SPACER, AND BOLT THROUGH FRAME AND OUT MOUNTING HOLE. USE FISHWIRE TO GUIDE HITCH DURING MOUNTING AND PREVENT LOSS OF BOLT / SPACER INSIDE FRAME RAIL.



NOTE: SOME VEHICLES MAY FISHWIRE THROUGH END OF FRAME

INSTALLATION STEPS

1. Lower exhaust using 15mm socket to remove (2) bolts attaching the exhaust bracket to rear of vehicle, on each side.
NOTE: Support exhaust to avoid damage.
2. Remove heat shield using needle nose pliers to loosen (4) speed nuts on driver side and (2) speed nuts on passenger side. Trim heat shield using aviation shears as shown in Heat Shield Trim Diagram. Reinstall trimmed heat shield
NOTE: All dimensions are approxiamate, confirm fit prior to trimming.
3. Fishwire (2) 7/16 carriage bolts and (2) CM-SP2 through access hole and out mounting holes on each side as shown in the Fishwire Technique Diagram. Reinstall trimmed heat shield.
4. Remove (1) screw on each side using 7mm socket attaching lower fascia to inner fascia.
NOTE: Trimming center fascia tab as shown in Fascia Tab Trim Diagram may ease installation.
5. Raise hitch into position and secure using (2) 7/16 flange nuts on each side.
NOTE: Bending exhaust bracket hanger down and away from mounting area may ease installation.
6. Reinstall vehicle exhaust bracket on hitch mounting plate and secure using (2) M10 x 70 and (1) CM-SP1 on \ each side.
7. Torque all 7/16 hardware to 59 ft-lbs and all M10 hardware to 45 ft-lbs.

Installation Complete

PERIODICALLY CHECK THIS RECEIVER HITCH TO ENSURE THAT ALL FASTENERS ARE TIGHT AND THAT ALL STRUCTURAL COMPONENTS ARE SOUND.

CURT Manufacturing LLC., warrants this product to be free of defects in material and/or workmanship at the time of retail purchase by the original purchaser. If the product is found to be defective, CURT Manufacturing LLC., may repair or replace the product, at their option, when the product is returned, prepaid, with proof of purchase. Alteration to, misuse of, or improper installation of this product voids the warranty. CURT Manufacturing LLC.'s liability is limited to repair or replacement of products found to be defective, and specifically excludes liability for incidental or consequential loss or damage.