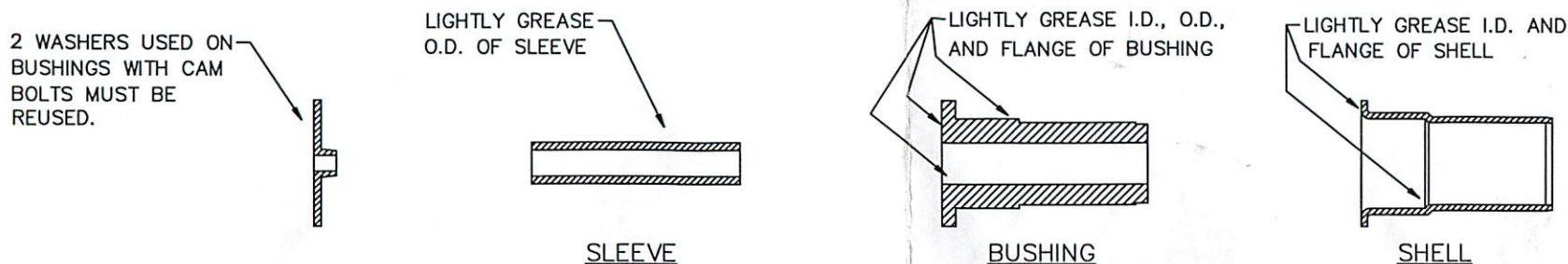


DAYSTAR GENERAL PURPOSE CONTROL ARM BUSHING INSTALLATION INSTRUCTIONS



1. IF YOUR BUSHING KIT DOES NOT CONTAIN NEW SHELLS AND/OR SLEEVES, THE ORIGINAL PARTS MUST BE REUSED.
2. CAM BOLT STYLE BUSHINGS USE A SPECIAL WASHER ON EACH SIDE OF THE SLEEVE. TO REMOVE THESE WASHERS PLACE A SMALL PUNCH THROUGH THE CENTER OF THE SLEEVE AND TAP LIGHTLY. SLEEVES AND WASHERS MUST BE REUSED.
3. IF NEW SLEEVES ARE NOT INCLUDED IN YOUR KIT, YOU MUST COMPLETELY REMOVE THE ORIGINAL RUBBER BUSHING. MAKE SURE THE INSIDE SURFACE IS FREE OF ALL OLD BUSHING MATERIAL.
4. WHEN A CONTROL ARM SHAFT IS USED, IT MUST BE IN POSITION BEFORE BUSHINGS AND/OR NEW SHELLS ARE INSTALLED. ALL WASHERS OR SPACERS ON THE SHAFT MUST BE REUSED AND INSTALLED IN THE CORRECT LOCATION BEFORE THE NEW BUSHINGS ARE INSTALLED.
5. WHEN NEW SHELLS ARE INCLUDED, INSTALLATION IS EASIER IF BUSHINGS AND SHELLS ARE DISSASSEMBLED AND SHELLS ARE INSTALLED FIRST.
6. AFTER SHELLS ARE INSTALLED (OR ORIGINAL SHELLS CLEANED) LIGHTLY GREASE I.D. OF SHELL, BUSHING, AND SLEEVE AND INSTALL IN THAT ORDER.



DAYSTAR GENERAL PURPOSE THRUST WASHER INSTALLATION INSTRUCTIONS

THRUST WASHERS ARE DESIGNED TO PREVENT THE CONTROL ARM FROM WALKING SIDE TO SIDE BY ACCEPTING SIDE LOAD PRESSURE CREATED DURING HARD CORNERING. MOST KITS CONTAIN MORE THAN ONE PART NUMBER. IT IS VERY IMPORTANT TO INSTALL THEM AT THE CORRECT LOCATION. SEE BELOW ILLUSTRATION FOR WASHER LOCATIONS FOR YOUR KIT.

KJ03001

1. M02412
2. M02409
3. M02411
4. M02415

KJ03002

1. M02410
2. M02409
3. M02411
4. M02415 FOR SELECT TRACK. FOR COMMAND TRACK FRONT AXLE, RIGHT SIDE UPPER AT AXLE, USE THRUST WASHER M02412

