



**INSTALLATION MANUAL**  
**FORD BRONCO REAR INNER FENDERS**  
**PRODUCT NUMBER: FB2006**  
**APPLICATION: 2021 FORD BRONCO**



## **IMPORTANT SAFETY GUIDE** | Your safety and the safety of others is very important.

In order to help you make informed decisions about safety, we have provided the following warnings, safety precautions, installation instructions, and other important information to alert you to potential hazards that could hurt you or others.

Please do a job safety analysis before each task to identify potential hazards for your situation and remove/protect against them. Use own good judgment and take your time.

Check packaged materials immediately upon arrival to ensure that all listed parts are included and undamaged.

**Read and understand all warnings, safety precautions, and instructions before installing this product.**

SENSORS FIELD OF VIEW MAY BE ALTERED WITH USE OF THE REPLACEMENT BUMPER.

---

### **WARNINGS**

- Failure to observe the following warnings and instructions provided in this manual could lead to severe injury and/or death.
- For professional installation only. Careless installation and/or operation can result in serious injury, death, and/or equipment damage. All liability for installation and use rests with the user or consumer.
- Fab Fours, Inc. only approves installing this product according to these written instructions with the hardware provided. Failure to install according to these instructions will invalidate the warranty. This includes, but is not limited to, using alternative installation methods, hardware, or materials.
- This product is for off road use only.

---

### **SAFETY PRECAUTIONS**

- Always remove jewelry and wear eye protection.
- Always use extreme caution when jacking up a vehicle for work. Set emergency brake and use tire blocks. Locate and use the vehicle manufacturers designated lifting points. Use jack stands.
- Always use appropriate and adequate care in lifting components into place.
- Always ensure components will remain secure during installation and operation.
- Always wear safety glasses when installing this kit. A drilling operation will cause flying metal chips. Flying chips can cause serious eye injury.
- Always use extreme caution when drilling a vehicle. Always disconnect power before welding. Thoroughly inspect the area to be drilled (on both sides of material when possible) prior to drilling, and relocate any objects that may be damaged.
- Always use extreme caution when welding a vehicle. Thoroughly inspect the area to be welded (on both sides of material when possible) prior to welding, and relocate any objects that may be a fire hazard. When welding in a cab, make sure the interior surfaces are covered (e.g., welding blanket) and a fire extinguisher is at hand.
- Always use extreme caution when cutting and trimming during fitting.
- Always tighten all nuts and bolts securely per installation instructions.
- Always route electrical cables carefully. Avoid moving parts, components that become hot, and rough or sharp edges.
- Always insulate and protect all exposed wiring and electrical terminals.
- Perform regular inspections and maintenance on mounts and hardware.

# TABLE OF CONTENTS

- 2 SAFETY / DISCLAIMER
- 3 TABLE OF CONTENTS
- 4 A MESSAGE FROM THE OWNER
- 5 GETTING STARTED
- 6 PROVIDED MATERIAL
- 8 INSTALLATION
- 13 CONTACT

# A MESSAGE FROM THE FOUNDER



Fab Fours' was born out of a passion for customizing vehicles and a love of the outdoors. Our engineering team uses the latest 3D design software to turn new product ideas into reality. In our factory, designs come to life with the combination of cutting edge technology for metal cutting and forming and an American workforce that puts its' heart and pride into every product.

From design and manufacturing, to quality and delivery, Fab Fours' mission is to be the market leader for steel truck and jeep accessories. We make sure a quality product is delivered on time, more than expected, better than expected to our customers.

Enjoy your new Fab Fours product. Welcome to the family!

*Greg Higgs*

FOUNDER, FAB FOURS

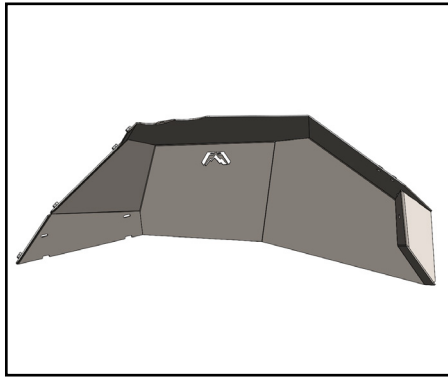
# GETTING STARTED

---

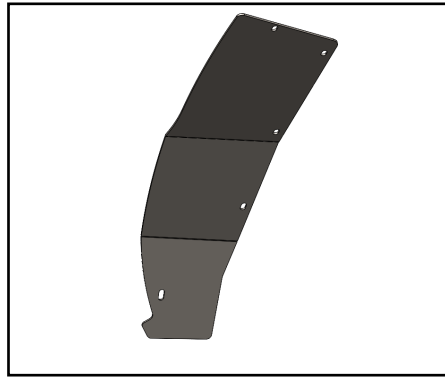
Before you begin the installation process of your new Fab Fours product, we suggest laying out all materials and parts on a pad or protective surface.

Failure to fully account for all components before beginning installation may leave vehicle immobile until part is acquired. Refer to the next pages as an inventory check.

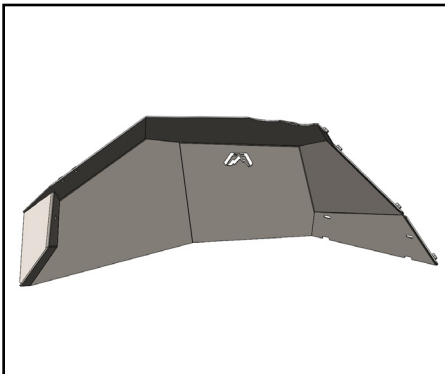
# PROVIDED MATERIALS



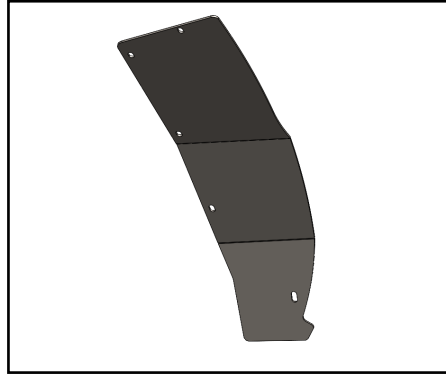
22970 - DS Inner Fender



22971 - DS Bolt on Panel



22972 - PS Inner Fender



22973 - PS Bolt on Panel

## TOOLS REQUIRED

- PLASTIC PUSH RIVET REMOVAL TOOL
- NEEDLE NOSE PLIERS
- PHILLIP'S HEAD SCREWDRIVER
- 7MM SOCKET WRENCH
- 10MM SOCKET WRENCH
- 5/16" SOCKET WRENCH
- 3/8" COMBINATION WRENCH
- 7/32" ALLEN WRENCH
- 7/16" SOCKET WRENCH
- 7/16" COMBINATION WRENCH
- ELECTRIC DRILL
- CUTOFF WHEEL OR SIMILAR METAL CUTTING TOOL

## ASSISTANCE

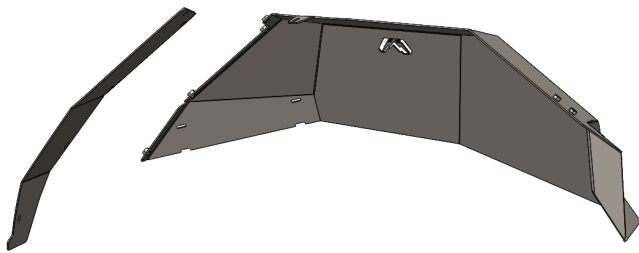
We recommend two people perform the installation as items are heavy and may need to be held in place while installing.

## ORGANIZATION

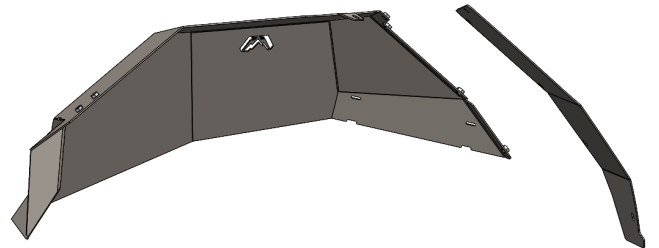
Disassemble the vehicle where you can catalog and store everything. We suggest labeling and bagging all the OEM bolts when removing from the vehicle. Failure to keep track of parts could lead to an inability to properly reinstall components.

# HARDWARE KIT | 50382-HW

FAB FOURS IDENTIFICATION	COMPONENT DESCRIPTION	QTY
50382-HW	1/4" BOLT YELLOW ZINC STEEL	2
50382-HW	1/4" HEX NUT ZINC STEEL	2
50382-HW	1/4" FLAT WASHER ZINC STEEL	4
50382-HW	1/4" LOCK WASHER ZINC STEEL	2
50382-HW	M6 X 1.0, BLACK STAINLESS, BUTTON HEAD CAP SCREW	14
50382-HW	M6, STAINLESS STEEL FLAT WASHER	14
50382-HW	M6 CAPTIVE NUT	2
50382-HW	3/8"-16, BOLT, PLAIN, SS	2
50382-HW	3/8"-16, NUT, PLAIN, SS	2
50382-HW	3/8", FLAT WASHER, PLAIN, SS	4
50382-HW	3/8", LOCK WASHER, PLAIN, SS	2
50382-HW	3/8"-16, RIVET NUT, ZINC, STEEL	2
50382-HW	17/32" DRILL BIT	1
50382-HW	3/8" RIVET NUT INSTALL TOOL	1



*Exploded View - Driver's Side*



*Exploded View - Passenger Side*

1. Remove factory fender flares by turning plastic levers and pulling off flares. (Figure 1)



Figure 1

2. Using pop rivet removal tool and Phillip's head screwdriver, remove plastic push rivets from inner fender. Remove two (2) plastic wing nuts and use 7mm socket to remove remaining sheet metal screws from inner fender.

3. Use metal cutoff wheel to trim roughly 2" of metal off inner body panel. (Figure 2)

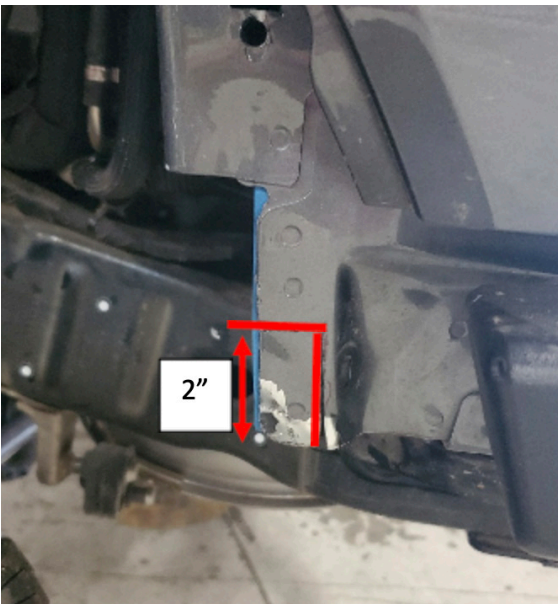


Figure 2



4. Bend center top mounting tab up and out of the way for installation. (Figure 3)



Figure 3

5. Insert 22970 inner fender into wheel well. Use 7/16" socket and combination wrench to attach upper mounting point of inner fender to wheel well mounting tab with 1/4" bolt and hardware (50382-HW). (Figure 4)



Figure 4

- 
6. Firmly hold inner fender up into position in wheel well, ensuring face is firmly against inner body face. Use marker to mark rear mounting hole on inner body panel. (Figure 5)

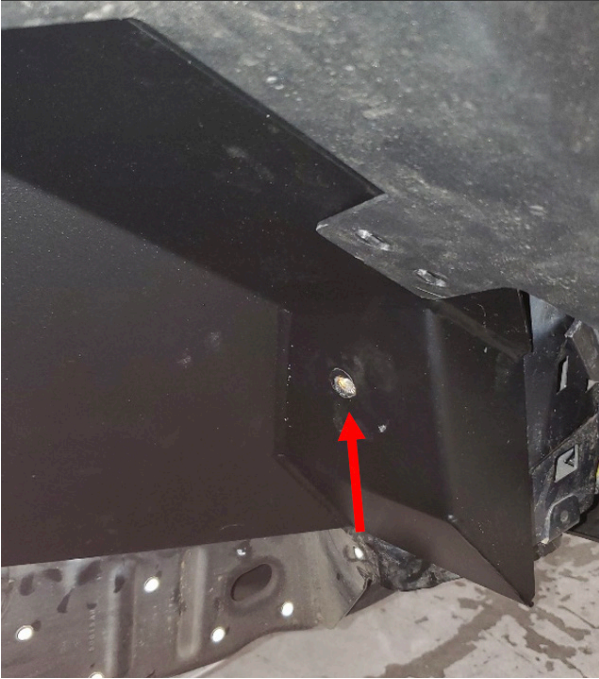


Figure 5

7. Remove  $\frac{1}{4}$ " bolt in step 5 and remove inner fender.
8. Use drill and supplied drill bit (50382-HW) to drill  $\frac{17}{32}$ " hole in body panel at mark made in step 6.
9. Install  $\frac{3}{8}$ " rivet nut (50382-HW) using rivet nut installation tool provided.
10. Reinstall inner fender by re-attaching  $\frac{1}{4}$ " bolt to top mount and use  $\frac{3}{8}$ " cap head bolt, lock washer and flat washer (50382-HW) to attach inner fender with rivet nut installed in step 9.

- 
11. Using flat head screwdriver and needle nose pliers, remove OEM captive nut on front inner fender mounting point. (Figure 6)



Figure 6

12. Install M6 captive nut into hole as shown in Figure 7.



Figure 7

- 
13. Install 22971 bolt on bracket using five (5) M6 caphead bolts. Attach four (4) bolts to 22971 inner fender and one (1) bolt into captive nut installed in step 12. (Figure 8)



Figure 8

14. Reinstall OEM fender flare.
15. Repeat installation steps for passenger side inner fender.
16. IF installing external reservoir for suspension: loop hose clamps through slots in inner fender (22970 & 22972) and attach reservoir. (Figure 9)



Figure 9

**INSTALLATION COMPLETE**

# CONTACT INFORMATION

**FAB FOURS INC.  
2213 INDUSTRIAL PARK ROAD  
LANCASTER, SC 29720**

**PHONE: (866) 385-1905**

**FAX: 970-385-1914**

**EMAIL: [SUPPORT@FABFOURS.COM](mailto:SUPPORT@FABFOURS.COM)**

**FABFOURS.COM**



**“IF YOU’RE LOOKING FOR MORE OF THE SAME,  
THEN YOU’VE COME TO THE WRONG PLACE.”**

**- GREG HIGGS**

