

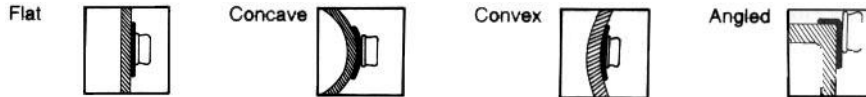


HK104 – Stick A Stud INSTALLATION INSTRUCTIONS

INSTALLATION WITH NO-DRILL STICK-A-STUD™ FASTENERS

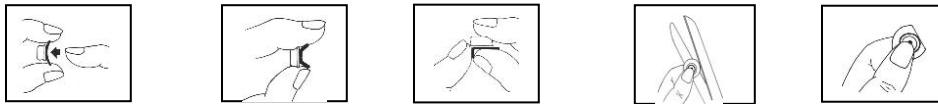
For best results install at temperature over 60° F (16° C). Stick-A-Stud™ Fasteners are designed to be shaped to the contours of the surface. Some installations may require bending or contouring the base of the Stick-A-Stud™ Fasteners (see below). For best results, bend or contour the base along the grooves. When installing Stick-A-Stud™ Fasteners **FIRM PRESSURE** must be applied to ensure proper contact.

At this point it is **IMPORTANT TO NOTE** that surface contact points may vary as below:



DEPENDING UPON THE CONFIGURATION OF THE CONTACT POINT, THE STICK-A-STUD™ FASTENER'S BASE MAY REQUIRE MODIFICATION AS NOTED:

- On **FLAT & CONCAVE SURFACES**, no modification is required
- On **CONTOURED & CONVEX SURFACES** the base of the Stick-A-Stud™ Fastener must be bent. This reduces the memory of the plastic and will allow for better adhesion to the surface contact points
- On **ANGLED SURFACES** the base should be bent to the angle required
- **IN SOME INSTANCES** the Stick-A-Stud™ Fastener's base may require trimming. Simply cut as required



Clean surfaces where the Stick-A-Stud™ Fasteners will be applied with the alcohol swab. Ensure no wax or cleaning fluid is present. Ensure contact surface points are dry.

Remove protective backing from a corner Stick-A-Stud™ Fastener and immediately apply to the surface. **REMOVE THE PROTECTIVE BACKING ONE AT A TIME WHEN APPLYING** STICK-A-STUD™ FASTENERS.

DO NOT TOUCH ADHESIVE ONCE BACKING IS REMOVED. THIS MAY RESULT IN IMPROPER ADHESION.

Apply firm pressure for 20 seconds.

BOND STRENGTH

| TIME | BOND |
|------------|------|
| 20 minutes | 50% |
| 60 minutes | 75% |
| 24 hours | 90% |
| 72 hours | 100% |

