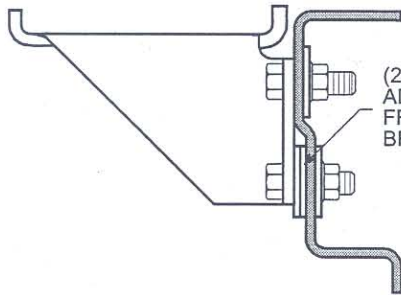
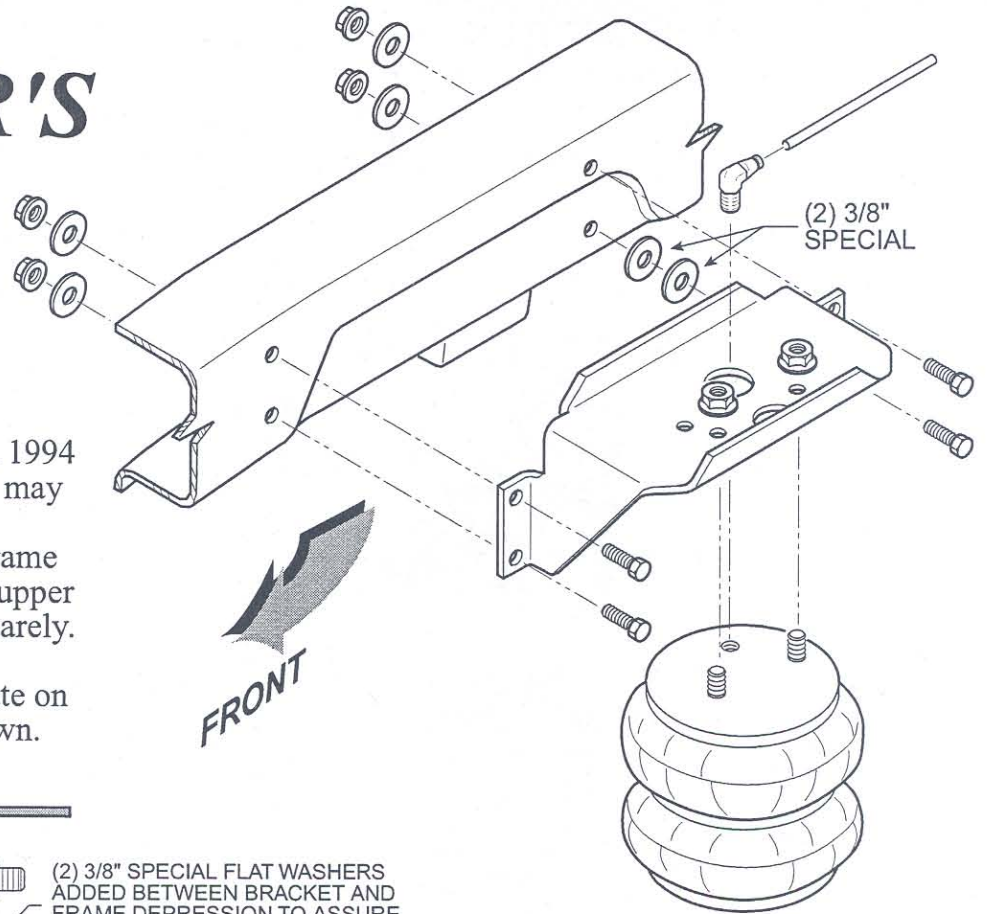


**NOTICE:** KIT INSTALLATION ON 1994 AND LATER DODGE PICKUPS

**DRIVER'S  
SIDE  
VIEW**

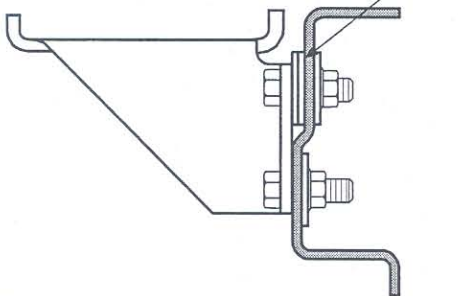
Installation of this kit on 1994 and later Dodge pickups may require (2) 3/8" special washers be used in the frame depression to assure the upper bracket is positioned squarely. The other three bracket mounting holes will locate on the frame surface as shown.



(2) 3/8" SPECIAL FLAT WASHERS ADDED BETWEEN BRACKET AND FRAME DEPRESSION TO ASSURE BRACKET SQUARENESS.

**DRIVER'S SIDE VIEW  
FROM THE REAR**

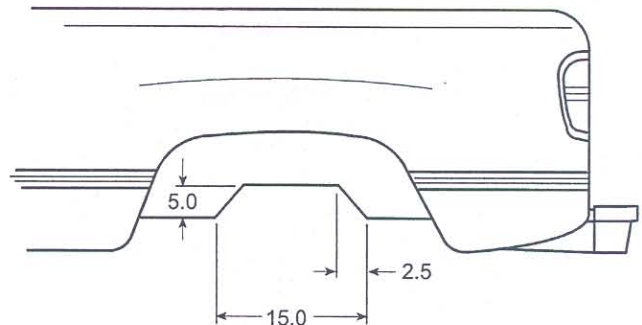
(2) 3/8" SPECIAL FLAT WASHERS ADDED BETWEEN BRACKET AND FRAME DEPRESSION TO ASSURE BRACKET SQUARENESS.



**Note:** The frame depression may be on the upper or bottom half of the frame rail. If your vehicle has an indentation on the upper half of the frame use the special flat washers as shown in the illustration directly above.

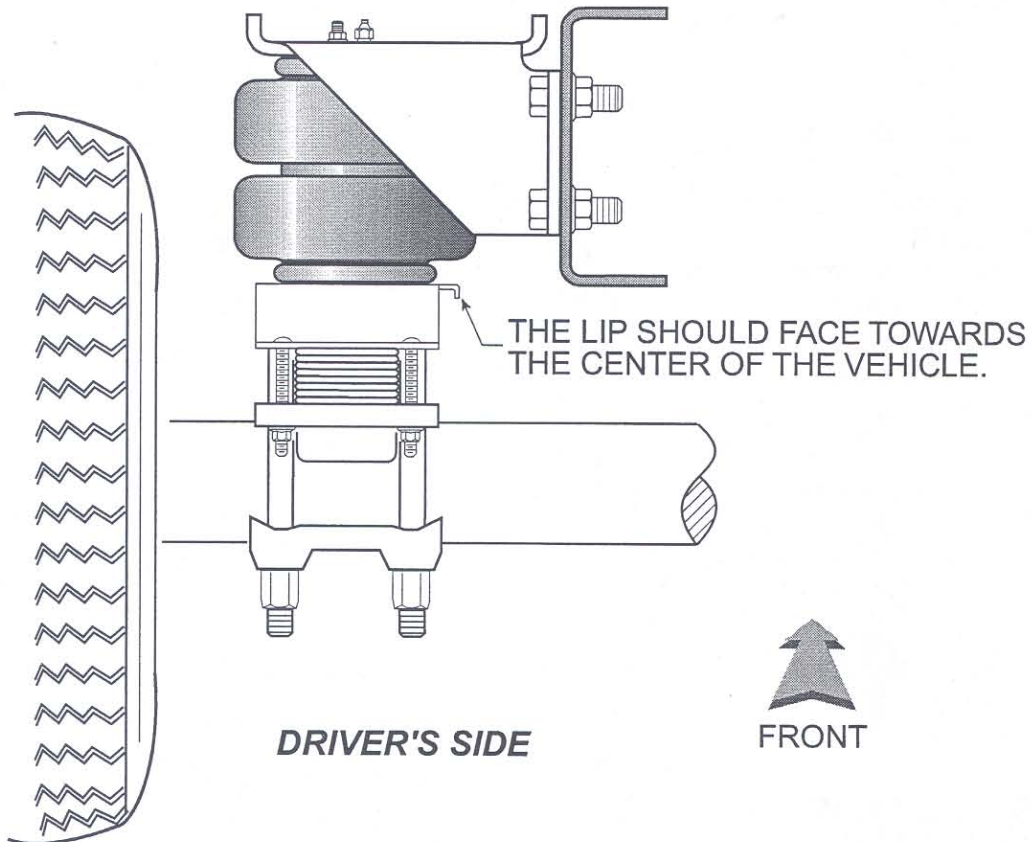
**Notice:** 1994 and later Dodge four wheel drive pickups have a splash guard inside the wheel well that will need to be trimmed away as shown in the figure below. This must be done in order to expose the frame rail and allow for the installation of the upper brackets.

**Note:** All the dimensions shown are in inches.



**(SEE OTHER SIDE OF PAGE)**

**NOTICE:** KIT INSTALLATION ON 1987 AND PRIOR CHEVROLET AND GMC PICKUPS.



**Notice:** In order to fit this kit on 1987 and prior Chevrolet and GMC two wheel drive 1/2, 3/4, and 1 ton models. The lower bracket needs to be reversed so that the lip on the side of the bracket (as shown in the illustration above) is towards the center of the vehicle.

**Note:** The rotation of the lower bracket is to ensure proper air spring alignment.

**(SEE OTHER SIDE OF PAGE)**