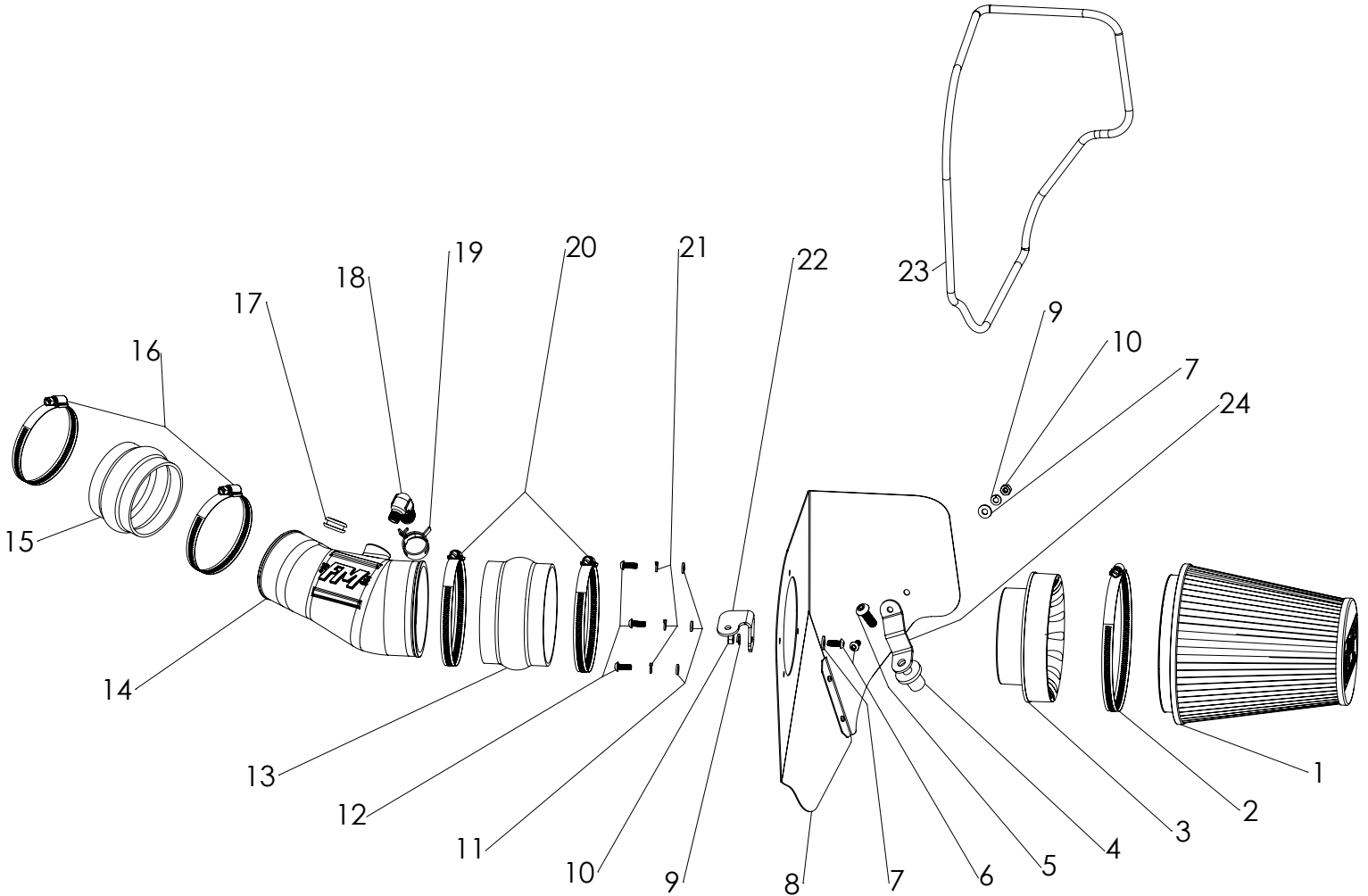




# Installation Instructions for: SYSTEM # 615108

2011-2016 MOPAR CARS  
6.4L Engine



| ITEM NO. | PART NUMBER | DESCRIPTION                               | QTY. |
|----------|-------------|---|------|
| 1        | AF1001      | FILTER, AIR 8.625" HIGH, Ø6" FLANGE       | 1    |
| 2        |             | #104 HOSE CLAMP Ø4.125 TO 7"              | 1    |
| 3        | AF6003      | 4.50" TO 6.00" AIR FILTER ADAPTER         | 1    |
| 4        | HW119       | NUT, BRASS RIVET 3/4" OD RUBBER INSULATED | 1    |
| 5        | HW250       | 3/8"-16 X 1.125" BTNHD SS                 | 1    |
| 6        | HW245       | 1/4"-20 X 5/8" BTNHD SS                   | 2    |
| 7        | HW320       | 1/4" FLAT WASHER SAE SS                   | 2    |
| 8        | AF3008      | HEAT SHIELD, 11-16 MOPAR CARS 6.4L SRT    | 1    |
| 9        | HW322       | 1/4" SPLIT LOCK WASHER SS                 | 2    |
| 10       | HW115       | 1/4"-20 NUT SS                            | 2    |
| 11       | HW319       | M6 FLAT WASHER SS                         | 3    |
| 12       | HW244       | M6 X 1.0 X 16MM BTNHD SS                  | 3    |

| ITEM NO. | PART NUMBER | DESCRIPTION                                 | QTY. |
|----------|-------------|---|------|
| 13       | AF4021      | 4.5"ID X 3"L RUBBER COUPLER, HUMP           | 1    |
| 14       | AF2017      | MOLDED INTAKE TUBE, 11-16 MOPAR CARS, 6.4L  | 1    |
| 15       | AF4019      | 3.5"ID X 2.5"L RUBBER COUPLER, HUMP         | 1    |
| 16       | MC350H      | #56 HOSE CLAMP Ø3 1/16 TO 4"                | 2    |
| 17       | AF4008      | GROMMET, RUBBER 1.06"OD X 1/2"ID X 7/16"THK | 1    |
| 18       | AF4014      | 3/4" BARB TO 1/4" NPT MALE 90DEG            | 1    |
| 19       | MC005P      | 3/4" HOSE PINCH CLAMP                       | 1    |
| 20       | MC450H      | #72 HOSE CLAMP Ø3 TO 5"                     | 2    |
| 21       | HW318       | M6 SPLIT LOCK WASHER SS                     | 3    |
| 22       | AF5016      | BRACKET 1, 2017, DODGE CARS, 6.2L           | 1    |
| 23       | 49000061    | HEAT SHIELD BRACKET                         | 1    |
| 24       | AF5017      | BRACKET 2, 2017, DODGE CARS, 6.2L           | 1    |