



Installation Instructions for

**717894**

**CAT-BACK FFX DOS**

**2019 GM SILVERADO/SIERRA 1500  
CREW CAB 4WD & DOUBLE CAB  
2WD/4WD W/DUAL EXHAUST  
EXITS FACTORY EXHAUST BEZELS  
WITH 5.3L ENGINES ONLY**

**OVERVIEW:**

1. Please take a moment to read and understand these instructions before installing your Flowmaster performance system. Use the parts drawing and list to verify exhaust system contents.

PART NO.	DESCRIPTION	QTY.
26740M	Inlet Pipe	1
TB700M	Extension Pipe	1
72288-Z	FFX Muffler	1
86546M	Left Front Tailpipe	1
86547M	Right Front Tailpipe	1
86548M	Left Rear Tailpipe	1
86549M	Right Rear Tailpipe	1

PART NO.	DESCRIPTION	QTY.
PK981	Hardware Pack includes:	1
MC300BS	3" Band Clamp	2
MC250BS	2½" Band Clamp	4
HW503	½" Hanger Keeper	5

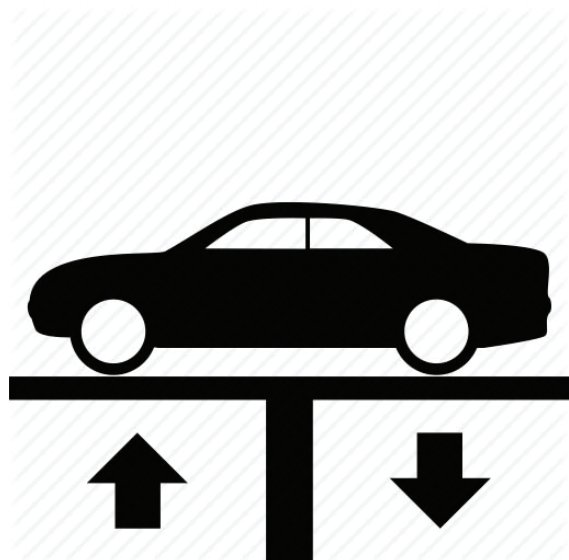
**REMOVE FACTORY EXHAUST SYSTEM:**

2. Raise vehicle up on a hoist or rack to working height. If you don't have access to a hoist or rack, support vehicle with jack stands.

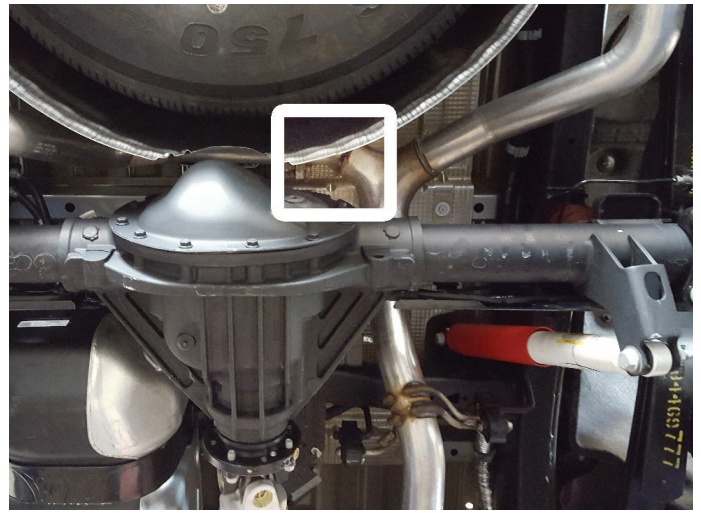
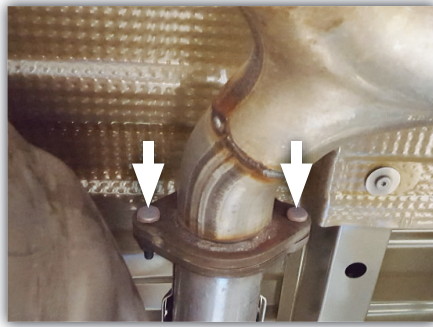
**WARNING:**  
Avoid serious burns! Allow your vehicle time to cool completely before touching any factory engine components.

**To ease disassembly of factory components:**

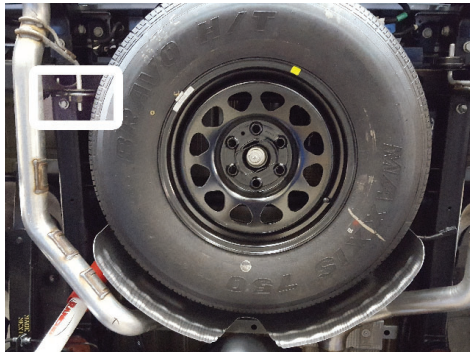
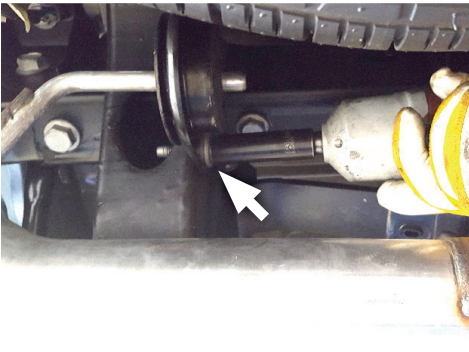
- Apply penetrating lubricant to mounts, bolts and clamps before you remove them.
- Use stands as necessary to support parts as you detach them from your vehicle.



3. Remove bolts (x2) and disconnect driver side tailpipe from exhaust at flange connection.



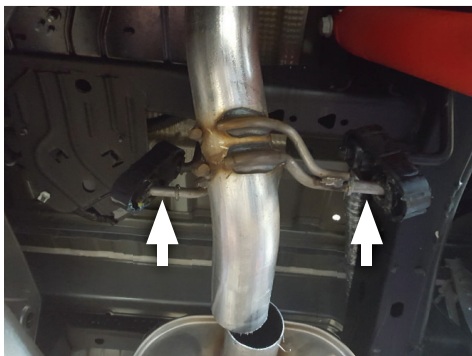
4. Remove bolt and mount securing driver side tailpipe then remove it from vehicle. Retain bolt and mount for later use.



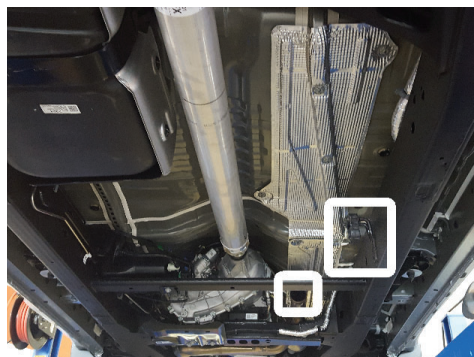
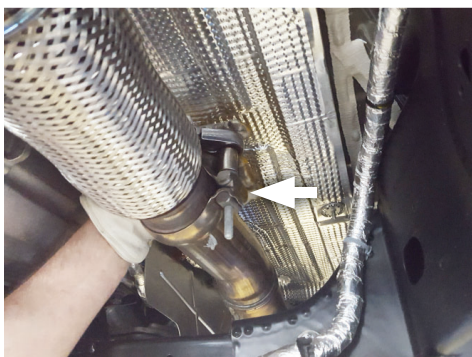
5. Cut tailpipes just behind factory muffler.



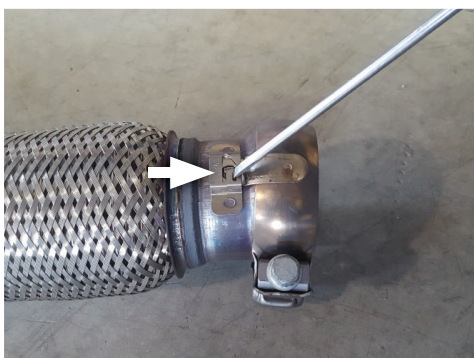
6. Disassemble passenger side tailpipe wire hangers (x2) from isolators. Remove bolt and mount near outlet then remove assembly from vehicle. Retain bolt and mount for later use.



7. Loosen factory clamp from catalytic converter connection to disconnect inlet pipe, disassemble wire hanger from isolator then remove muffler assembly completely from vehicle.



8. Release tab and remove factory clamp from pipe inlet. Retain factory clamp for later use.



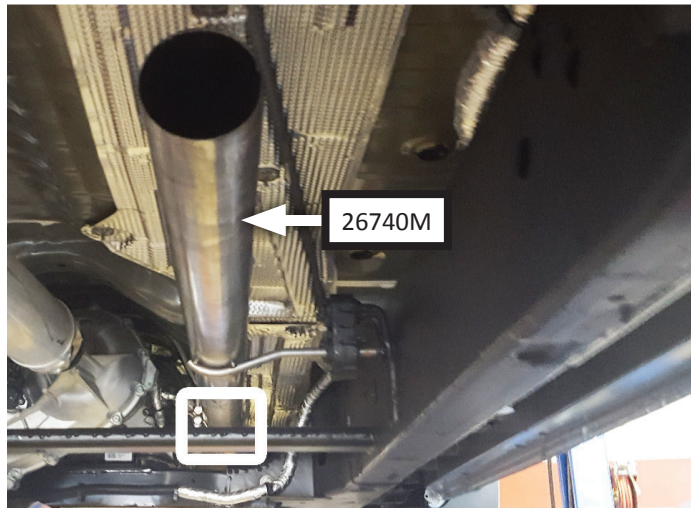
## INSTALL FLOWMASTER EXHAUST SYSTEM:

9. Remove nuts from stock and Flowmaster clamps, apply anti-seize compound to bolts and re-install nuts.

**NOTE:** The image in this step is intended for illustrative purposes only and may or may not accurately reflect components included in your kit.

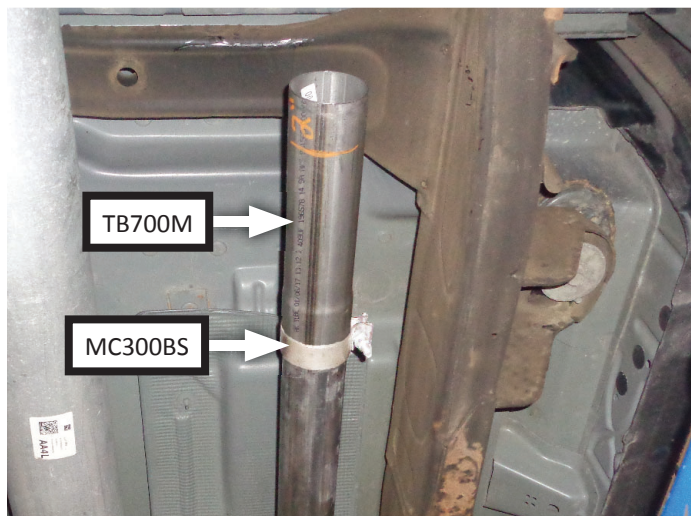


10. Place clamp (removed step 8) onto **inlet pipe (26740M)**. Connect inlet pipe to catalytic converter and mount wire hanger into factory isolator. Tighten clamp just enough to allow for adjustment.

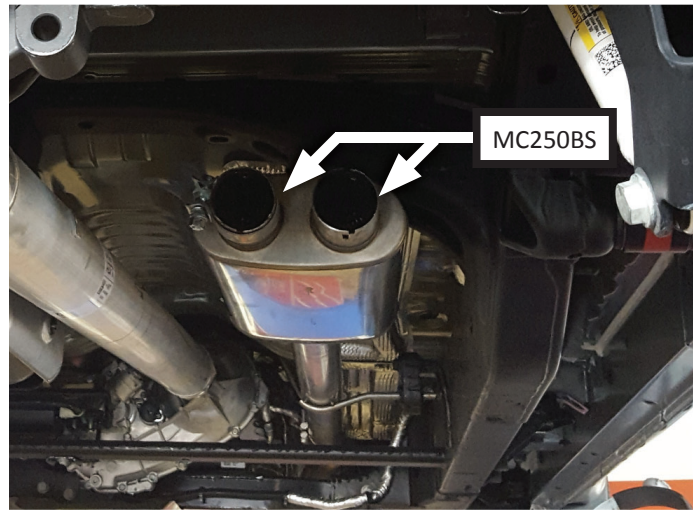
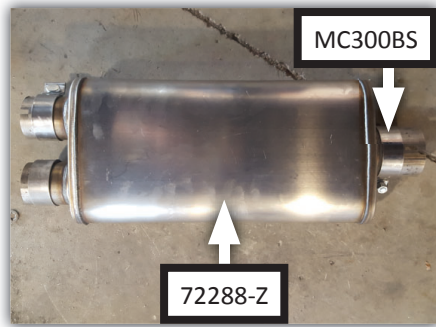


**NOTE:** Complete this step **ONLY** if your vehicle is a Crew Cab truck with a 6'5" bed. This extension pipe will not be used on Double Cab or Crew Cab-5.5' bed models.

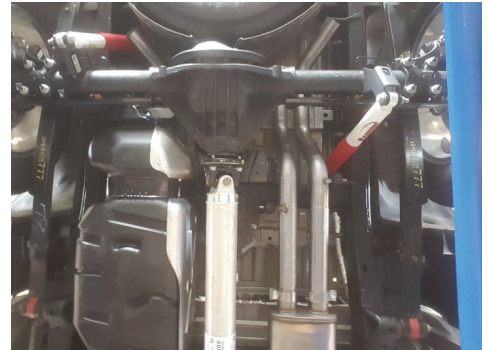
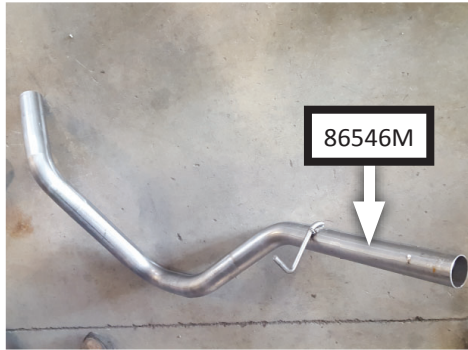
11. Place **clamp (MC300BS)** onto **extension pipe (TB700M)** inlet then connect extension pipe to inlet pipe.



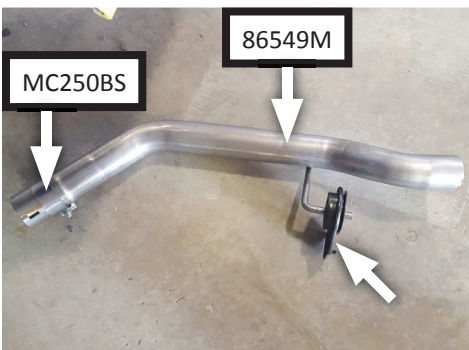
12. Place clamp (**MC300BS**) onto muffler (**72288-Z**) inlet. Place clamps (**x2**) (**MC250BS**) onto muffler outlets. Connect muffler to inlet or extension pipe then tighten front clamp just enough to allow for adjustment.



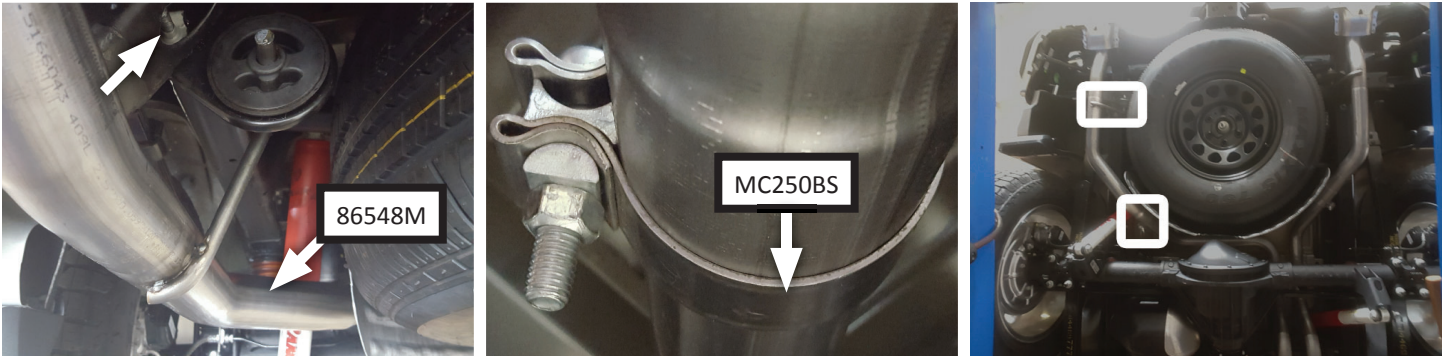
13. Route **right front tailpipe (86547M)** and **left front tailpipe (86546M)** over axle and connect them to muffler outlets. Mount wire hangers into isolators then tighten clamps (**x2**) enough to allow for adjustment.



14. Place clamp (**MC250BS**) and mount (removed step 6) onto **right rear tailpipe (86549M)** then connect it to right front tailpipe. Bolt mount onto frame then tighten clamp enough to allow for adjustment.



15. Place **clamp (MC250BS)** and mount (removed step 4) onto **left rear tailpipe (86548M)** then connect it to left front tailpipe. Bolt mount onto frame then tighten clamp enough to allow for adjustment.



16. Adjust exhaust components to provide a satisfactory fit. Maintain a minimum of  $\frac{1}{2}$ " clearance around all components of exhaust system, keeping in mind suspension, travel and vibration. After making any required adjustments, securely tighten clamps.

**NOTE:** If your exhaust system still needs alignment, adjust isolator mounts in step 14 and 15.

17. Slide **hanger keepers (x5) (HW503)** onto the end of each hanger to prevent components from slipping out of their rubber mounts.
18. We recommend applying a one inch tack weld to all slip-fit connections for a more secure installation. You may also apply high temperature paint over welded areas to prevent rust and premature corrosion.

Congratulations, the installation of your FLOWMASTER performance exhaust system is now complete!





Installation Diagram for

**717894**

**CAT-BACK FFX DOS**

**2019 GM SILVERADO/SIERRA 1500**

**CREW CAB 4WD & DOUBLE CAB**

**2WD/4WD W/DUAL EXHAUST**

**EXITS FACTORY EXHAUST BEZELS**

**WITH 5.3L ENGINES ONLY**

