

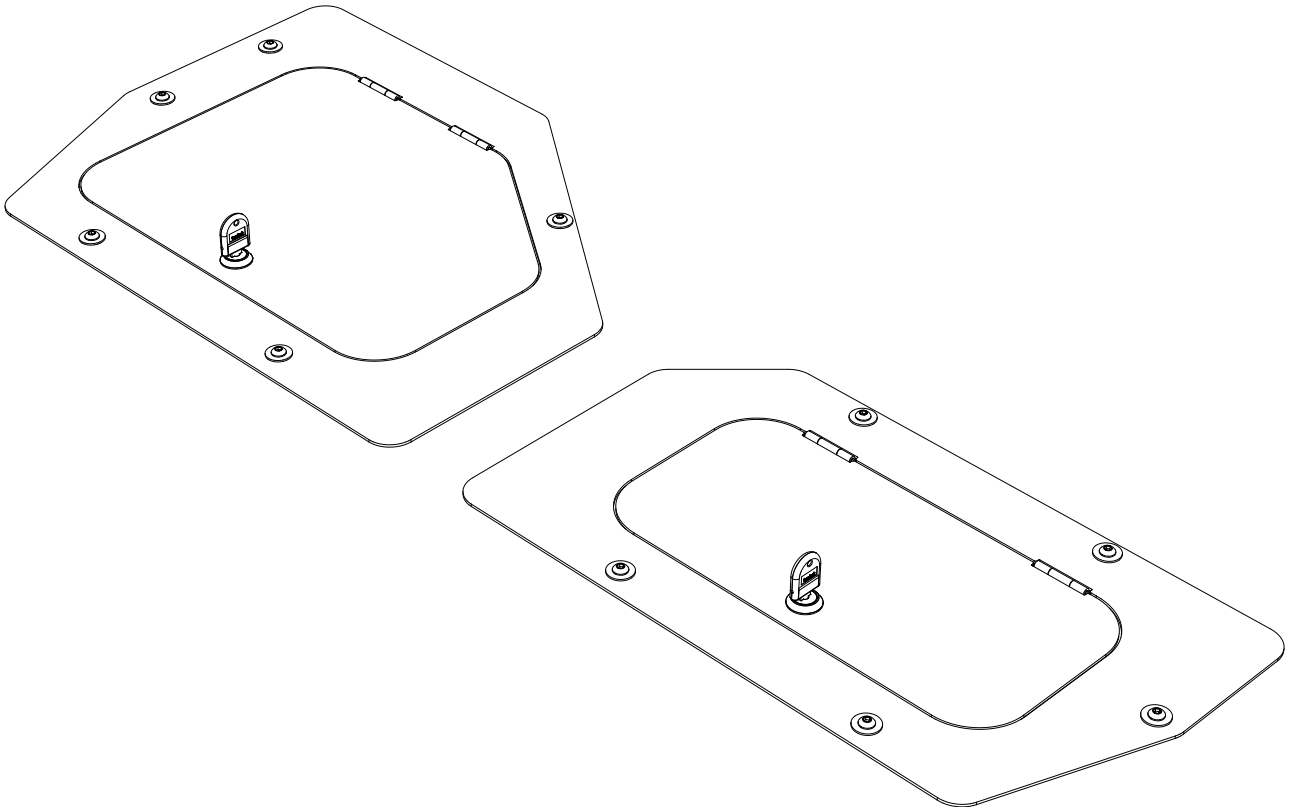


FRONT RUNNER
VEHICLE OUTFITTERS

FORD RANGER
UNDER SEAT SAFE

ENG

SAFE010



READ ME !

Thank you for purchasing a Front Runner Ford Ranger Under Seat Safe.

Before you start, take a moment to familiarize yourself with this Fitting Instruction and the components received.

Refer to Page 2 for a list of all the components, quantities and tools required.

IMPORTANT WARNING!

IT IS CRITICAL THAT ALL FRONT RUNNER PRODUCTS BE PROPERLY AND SECURELY ASSEMBLED AND ATTACHED TO YOUR VEHICLE.

IMPROPER ATTACHMENT COULD RESULT IN AN AUTOMOBILE ACCIDENT, AND COULD CAUSE SERIOUS BODILY INJURY OR DEATH.

YOU ARE RESPONSIBLE FOR ASSEMBLING AND SECURING ALL FRONT RUNNER PRODUCTS TO YOUR VEHICLE. CHECKING THE ATTACHMENTS PRIOR TO USE, AND PERIODICALLY INSPECTING THE PRODUCTS FOR ADJUSTMENT, WEAR AND DAMAGE.

THEREFORE YOU MUST READ AND UNDERSTAND ALL OF THE INSTRUCTIONS AND PRECAUTIONS SUPPLIED WITH YOUR FRONT RUNNER PRODUCT PRIOR TO INSTALLATION OR USE.

IF YOU DO NOT UNDERSTAND ALL OF THE INSTRUCTIONS AND CAUTIONS, OR IF YOU HAVE NO MECHANICAL EXPERIENCE AND ARE NOT THOROUGHLY FAMILIAR WITH THE INSTALLATION PROCEDURES,

YOU SHOULD HAVE THE PRODUCT INSTALLED BY A PROFESSIONAL INSTALLER OR OTHER QUALIFIED PERSONNEL.

1

GET ORGANIZED

Here is what you are looking at for SAFE010

IN THE BOX

1	1 X	Safe Right Side
2	1 X	Safe Left Side
3	10 X	M6 Rivnut
4	22 X	M6 x 19 x 1SS Flat Washer
5	10 X	M6 x 20 Button Head

TOOLS NEEDED



9.5MM

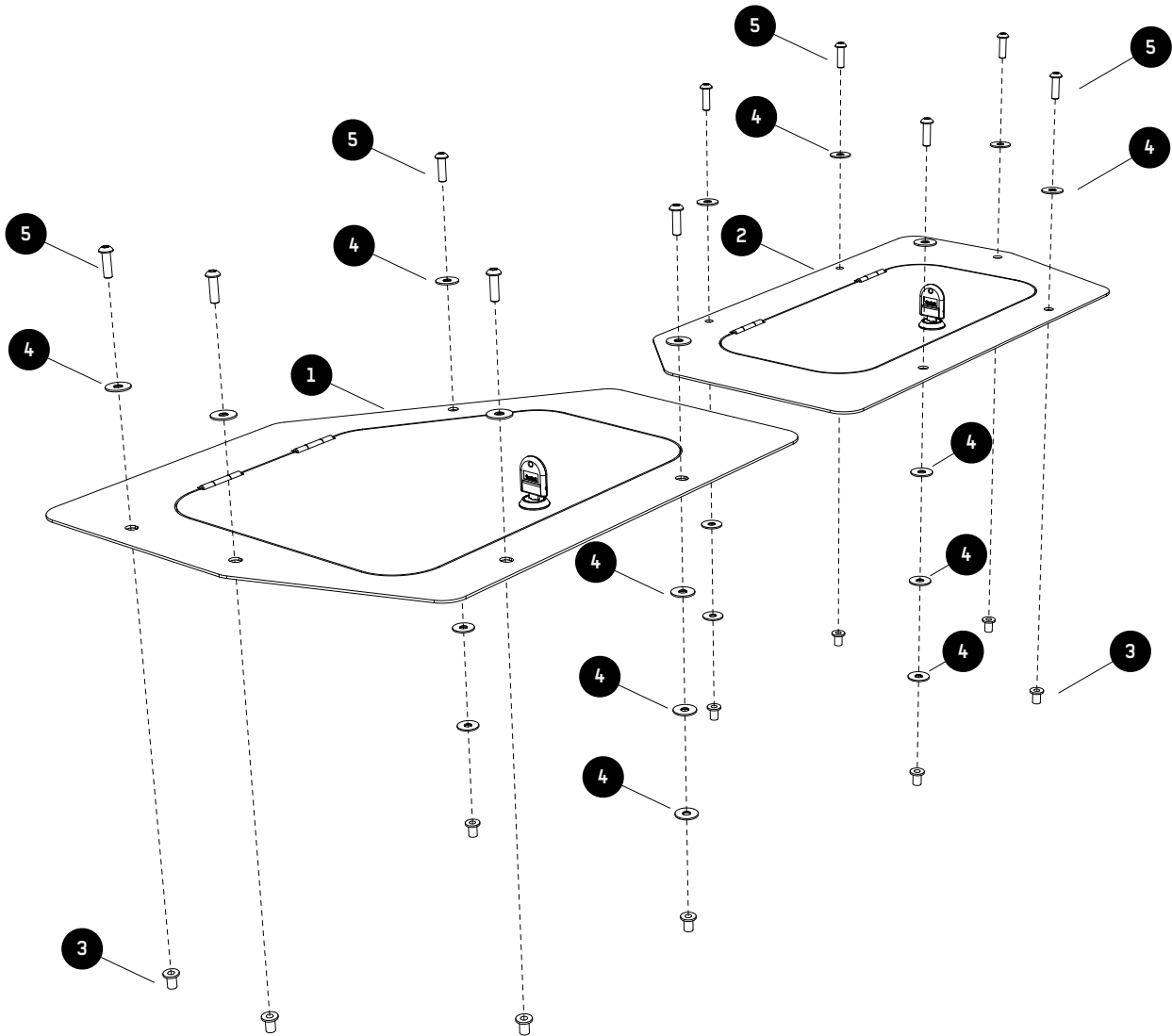


Rivnut Tool



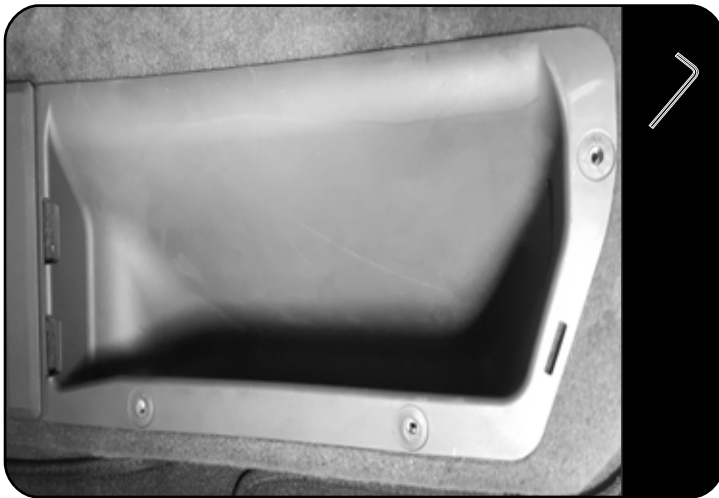
4MM

FIGURE 1.1



2**FIT AND SECURE**

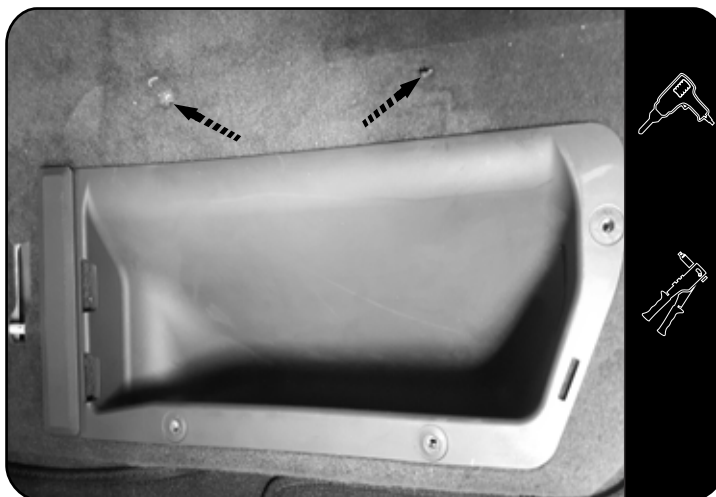
2.1




 To fit the Under Seat Safe you need to lift the rear seat of the vehicle.

Loosen and remove the bolts holding the two plastic trays in place.

2.2



 On the left side of the vehicle, place the Safe (Item 2) over the plastic tray and mark the holes shown in 2.2.

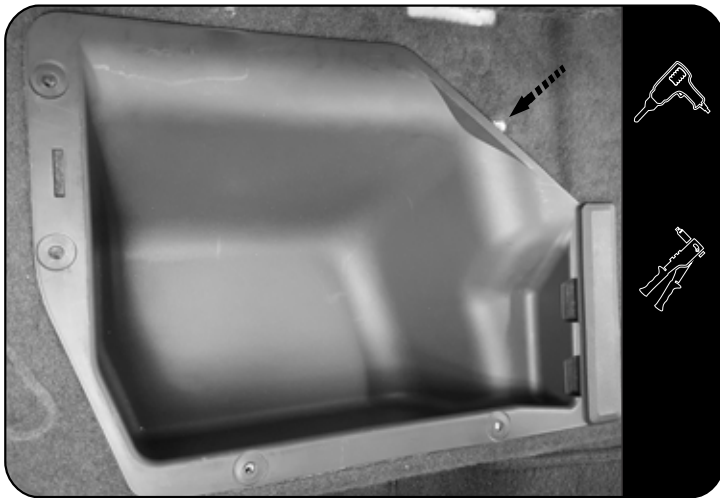
Remove the tray and drill the holes to 9.5mm. Insert and crimp rivnuts (Item 3) in all the holes.


 **TAKE CARE WHEN DRILLING AS THE FUEL TANK IS SITUATED BELOW THE FLOOR.**

2.3

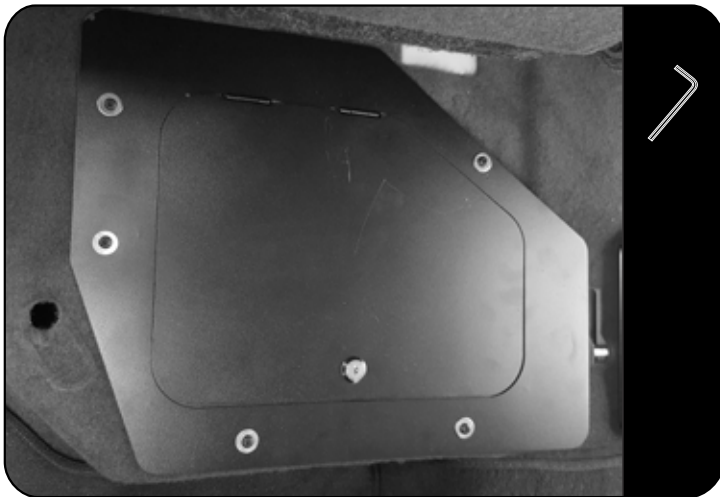


 Re fit the plastic tray back in place. Place the Safe (Item 2) over the plastic tray. Aligning the holes, secure with fasteners shown in 1.1

2**FIT AND SECURE****2.4**

 On the right side of the vehicle, place the Safe (Item 1) over the plastic tray and mark the hole shown in 2.4.

Remove the tray and drill the holes to 9.5mm. Insert and crimp rivnuts (Item 3) in all the holes.

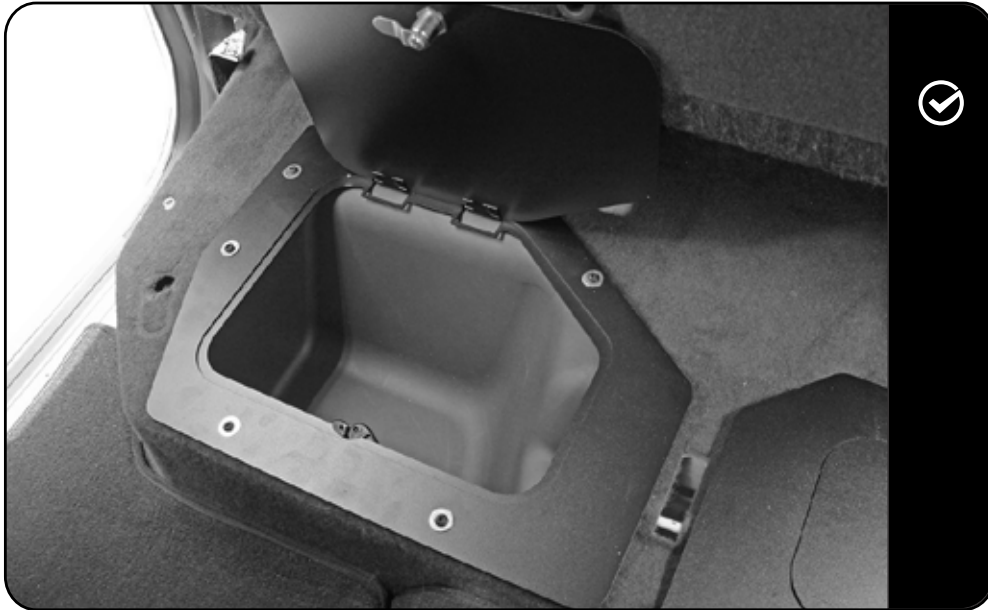
2.5

 Re fit the plastic tray back in place. Place the Safe (Item 1) over the plastic tray. Aligning the holes, secure with fasteners shown in 1.1.

3

COMPLETION

3.1



Congratulations. You did it. Take a step back and admire your work!

4

INSTALL OTHER VEHICLE AND RACK ACCESSORIES

Now's the time to visit your favorite Front Runner Dealer in person or online.