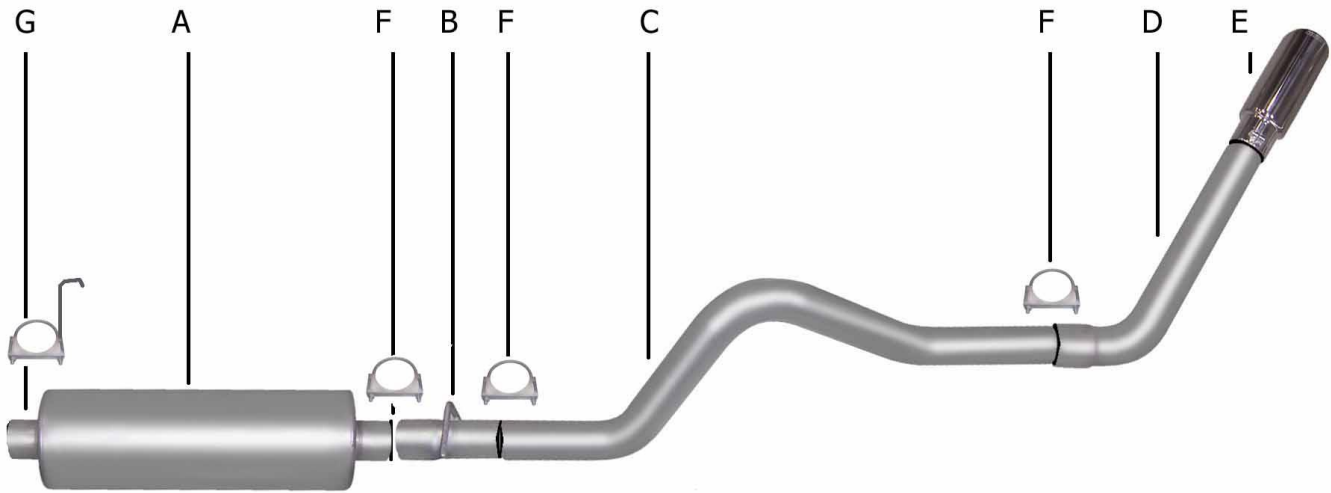




PERFORMANCE EXHAUST SYSTEMS

**INSTRUCTION MANUAL**  
**CAT-BACK STAINLESS SINGLE EXHAUST**  
**Dodge Cummins 5.9L Turbo Diesel Truck**  
**Standard, Extended, Crew Cab**  
**PART # 616576**



ITEM	PART #	QUANTITY	DESCRIPTION
A	420887	1	3.00" Stainless Superflow Muffler
B	1101-700720S	1	3.00" Stainless Extension Pipe
C	110-50030RS	1	3.00" Stainless Overaxle Tailpipe
D	1102-700721S	1	3.00" Stainless Turnout Tailpipe
E	500379	1	4.00" Stainless Steel Tip
F	OHD300	3	3.00" Clamp
G	4252	1	O.E. Hanger

Thank you for purchasing our GIBSON EXHAUST SYSTEM for your vehicle. If you need further assistance, please do not hesitate to call our Technical Department at (800) 528-3044, Monday through Friday, 8:00 AM to 5:00 PM.

# EXHAUST INSTALLATION #616576

WHEN INSTALLING THIS EXHAUST SYSTEM, MAKE SURE TO USE PROPER SAFETY PRECAUTIONS. USE JACK STANDS WHEN UNDER TRUCK, SET PARKING BRAKE, BLOCK TIRES, AND USE SAFETY GLASSES AND GLOVES. **DO NOT WORK WITH HOT PIPES!**

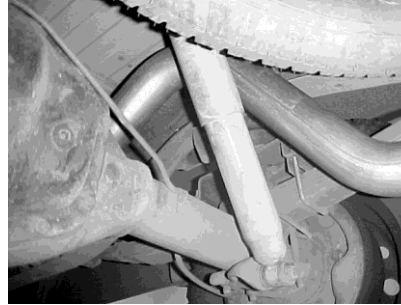
## SUGGESTED TOOLS:

9/16" SOCKET, 15MM SOCKET, 1/2" WRENCH, 1/2" SOCKET, JACK STAND, WD-40, HACKSAW

**LAY OUT THE GIBSON EXHAUST SO IT LOOKS LIKE THE DRAWING AND COMPARE THE PART NUMBERS.**



Lay out the exhaust on the floor so it looks like the drawing and compare the parts with the manual. Leave all rubber grommets in place. Use WD-40 to aid in removal.

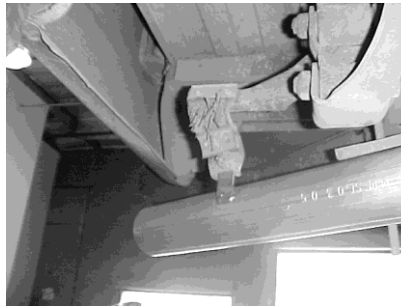


Install rear extension pipe #B and connect to muffler using clamp #F. Install over-axle tailpipe #C to extension pipe and attach using clamp #F.

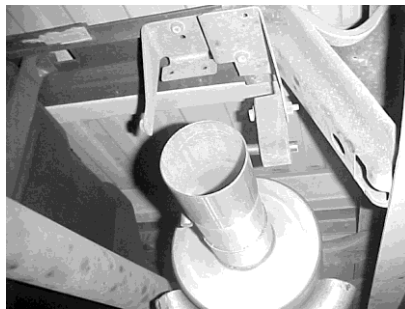


Remove & cut stock exhaust at the first connection approximately 12" in front of your stock muffler. Use jack stands to support converter.

Install hanger #G .



Slide turn out pipe #D on the tailpipe behind the rear tire, & hook to your existing hanger. Roll turnout pipe until you have it at the correct angle for your truck and connect with clamp #F.



Slide muffler #A with inlet towards the converter onto your stock front extension pipe. Use a jack stand to support the muffler and connect with hanger #G but do not tighten. Muffler inlet is looking into the louvers.



Install your Stainless Steel tip and clamp down. When you have everything in place \*, firmly tighten all your hardware and clamps securely down. To clean your stainless steel tips, use a stainless cleaner and polish.

**\* MAKE SURE YOU HAVE AT LEAST A 1" CLEARANCE ON ALL PIPES FROM ALL RUBBER BRAKE LINES, FUEL LINES, SHOCK BOOTS, TIRES, ETC**