

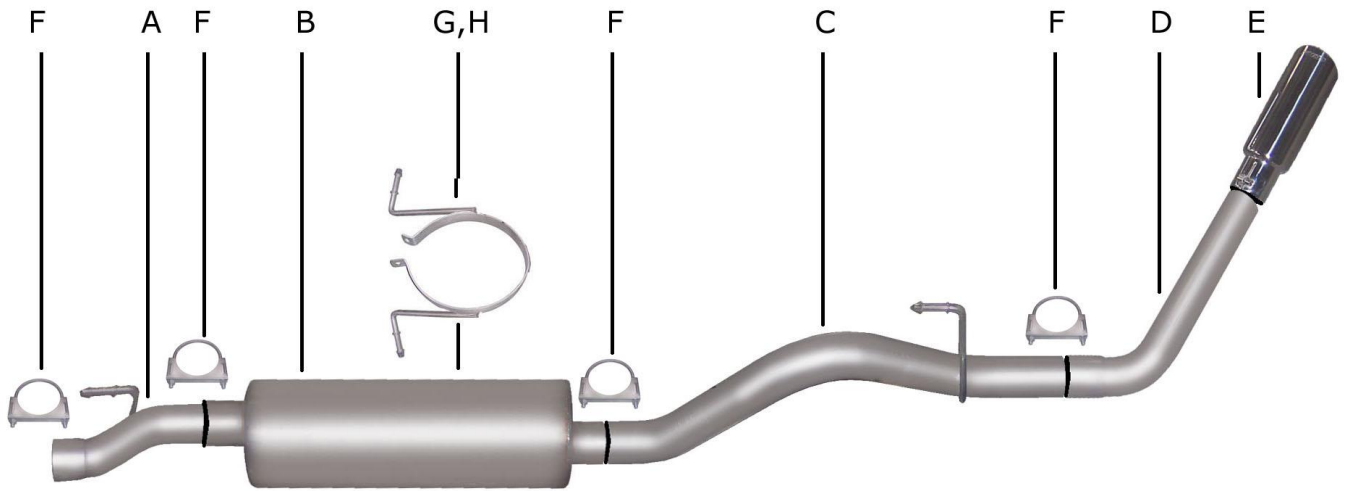


# INSTALLATION INSTRUCTIONS

## CAT BACK STAINLESS SINGLE EXHAUST

DODGE RAM 5.7L 2/4WD 4DR MEGA CAB, SHORT BED 2500  
 DODGE RAM 5.7L 2/4WD 4DR QUAD CAB, SHORT BED 2500/3500

### PART #616602



ITEM	PART #	QUANTITY	DESCRIPTION
A	1076-700814S	1	3" Stainless Headpipe
B	766302S	1	Stainless Superflow muffler
C	558-700406S	1	3" Stainless Overaxle tailpipe w/welded hanger
D	154-50032RS-2	1	3" Stainless Exit pipe
E	500360	1	3½" Stainless tip
F	OHD300	4	3" clamp
G	4339	1	8" Band clamp
H	BO-1015	1	Bolt kit for band clamp

Thank you for purchasing our Gibson exhaust system for your vehicle. If you need further assistance, please do not hesitate to call our technical dept at (800) 528-3044 Monday through Friday, 8:00 am to 5:00 pm.

# INSTALLATION INSTRUCTIONS #616602

## CAREFULLY READ INSTRUCTIONS BEFORE STARTING INSTALLATION.

When installing this exhaust system make sure to use proper safety precautions. Use jack stands when working under the vehicle, set parking brake, block tires and use safety glasses and gloves. Allow exhaust to cool before attempting installation. Severe injury or burns could occur if safety measures are not taken.

**SUGGESTED TOOLS:** 1/2", 9/16" 15mm wrenches & sockets, WD-40, hacksaw, jack stands.

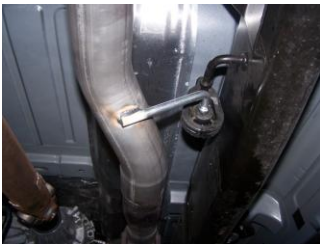
.....  
: **Disconnect the negative battery cable before removal of OEM exhaust. This will allow the computer to reset and recognize the** :  
: **new exhaust. Lay out the exhaust on the floor so it looks like the drawing and compare parts with manual.** :  
: .....



**1.** To remove the stock exhaust remove it from in front of the stock muffler. **DO NOT REMOVE STOCK HEADPIPE.** Disengage the welded hangers using WD-40 from the OEM rubber grommets. Do not damage or remove the rubber grommets as you will re-use them



**5.** Install the overaxle tailpipe #C into the muffler 1½"-2". Use clamp #F to secure tailpipe to muffler. **DO NOT TIGHTEN.** Insert welded hanger into rubber grommet.



**2.** Install head pipe #A onto your existing stock front pipe and attach with clamp #F. Use a jack stand to support the converter. Insert welded hanger into rubber grommet.



**6.** Install exit pipe #D onto overaxle tail pipe. Use clamp #F to secure. **DO NOT TIGHTEN.**



**3.** Install muffler #B onto head pipe #B 1½"-2" with the louvers facing towards the converter. Use a jack stand to support the muffler. Use clamp #F to secure the muffler to the headpipe. Do not tighten. Muffler inlet is looking into the louvers.



**7.** Install stainless steel tip #E. Clamp down. When you have everything in place, firmly tighten all bolts and clamps down securely. Use stainless steel cleaner and a Scotch Brite pad weekly to prevent tip from discoloration.



**4.** Slide band clamp #G onto muffler and attach with bolt kit #H. **DO NOT TIGHTEN.** Insert hangers into rubber grommets.

GIBSON EXHAUST systems are designed on a factory stock vehicle. Any aftermarket products installed could increase the sound levels of this Exhaust. **Make sure there is a 1" clearance from ALL rubber brake lines, shock boots, fuel lines, tires, etc to prevent heat related damage or fire.**