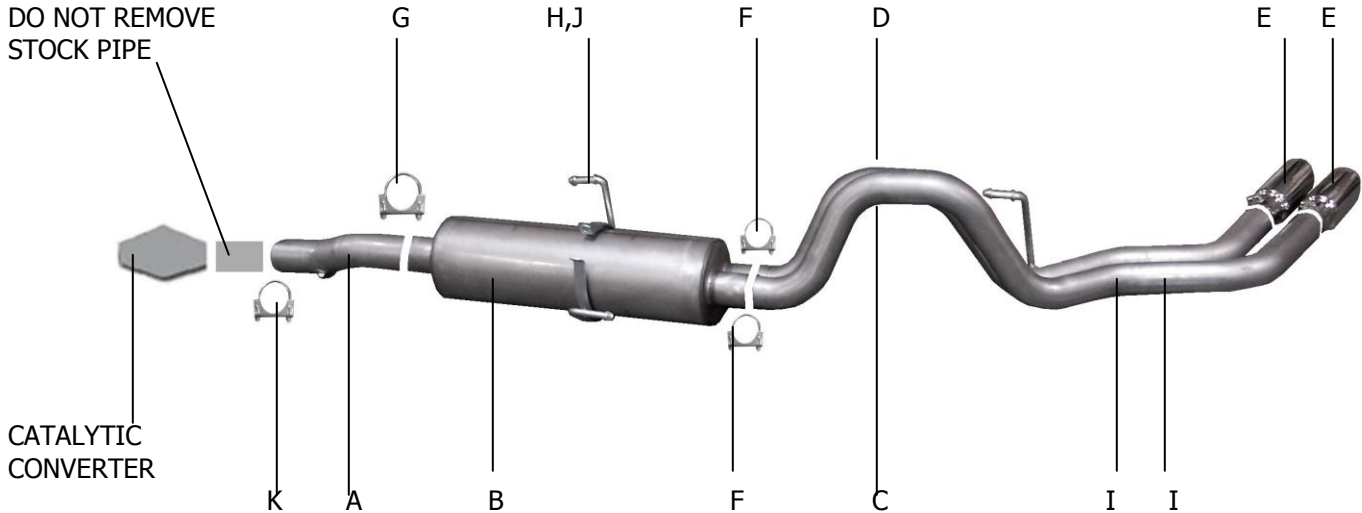




# INSTRUCTION MANUAL

**CAT BACK DEEGAN 38 DUAL SPORT STAINLESS EXHAUST  
DODGE RAM 1500 TRUCK 5.7L HEMI 2/4WD  
STANDARD CAB, SHORT BED 2DR  
PART # 66531D**



ITEM	PART #	QUANTITY	DESCRIPTION
A	832-700591S	1	3"X21" SS HEADPIPE EXT.W/HGR
B	789800S	1	SUPERFLOW STAINLESS MUFFLER
C	553-700409S	1	2- $\frac{1}{2}$ " STAINLESS DRIVER TAILPIPE
D	554-700410S	1	2- $\frac{1}{2}$ " STAINLESS PASS. TAILPIPE
E	500640-B	2	4" BLACK SS TIP
F	5757	2	2- $\frac{1}{2}$ " CLAMP
G	OHD300	1	3" CLAMP
H	4188	1	BAND CLAMP
I	BO-906	2	BOLT KIT FOR TAILPIPE
J	BO-1015	1	BAND CLAMP BOLT KIT
K	5758	1	2-3/4" CLAMP
L	DE-13	2	DEEGAN 38 BADGE

**WILL NOT FIT WITH FACTORY GROUND KIT**

Thank you for purchasing our GIBSON EXHAUST SYSTEM for your vehicle. If you need further assistance, please do not hesitate to call our Technical Department at (800) 524-3044, Monday through Friday, 8:00 am to 5:00 pm.

# EXHAUST INSTALLATION KIT#66531D

WHEN INSTALLING THIS EXHAUST SYSTEM MAKE SURE TO USE ALL THE PROPER SAFETY PRECAUTIONS. USE JACKSTANDS WHEN UNDER THE TRUCK, SET PARKING BRAKE, BLOCK TIRES, AND USE SAFETY GLASSES AND GLOVES.

**DO NOT WORK WITH HOT PIPES!**

## SUGGESTED TOOLS

15MM SOCKET, 9/16" SOCKET, 1/2" SOCKET, 1/2" WRENCH, JACKSTANDS, HACKSAW, WD-40

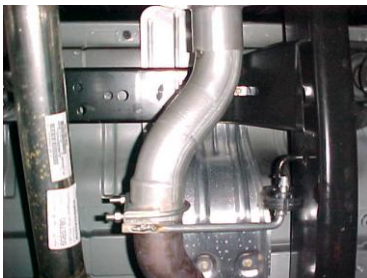
**TO REMOVE THE STOCK EXHAUST UNCLAMP THE STOCK EXHAUST JUST IN FRONT OF THE MUFFLER**



**DO NOT REMOVE YOUR HEADPIPE.** YOU MAY NEED TO HEAT IT UP FOR EASIER REMOVAL. LEAVE ALL RUBBER GROMMETS IN PLACE. USE WD-40 FOR REMOVAL OF HANGERS.



INSTALL DRIVERSIDE TAILPIPE #C INTO MUFFLER. USE CLAMP #F TO SECURE TAILPIPE TO MUFFLER.



INSTALL HEADPIPE #A ONTO YOUR EXISTING STOCK FRONT PIPE AND SECURE WITH CLAMP #K. INSERT WELDED HANGER INTO RUBBER GROMMET.



INSTALL PASSENGER SIDE TAILPIPE #D INTO MUFFLER AND ATTACH USING CLAMP #F. INSERT WELDED HANGER INTO RUBBER GROMMET. DO NOT TIGHTEN. USE BOLT KIT #I TO ATTACH THE TAILPIPES TOGETHER. DO NOT TIGHTEN. PASSANGER SIDE TAB ON THE TAILPIPE WILL BE ON TOP OF THE DRIVERSIDE TAB.



INSTALL MUFFLER #B ONTO HEADPIPE 1-1/2" TO 2". USE CLAMP #G TO SECURE THE MUFFLER TO THE HEADPIPE. DO NOT TIGHTEN. SLIDE BAND CLAMP #H ONTO THE MUFFLER AND INSERT THE WELDED HANGERS INTO THE RUBBER GROMMETS. ATTACH WITH BOLT KIT #J.



INSTALL YOUR BLACK CERAMIC COATED TIPS. PROCEED TO THE NEXT SHEET ON HOW TO INSTALL YOUR DEEGAN 38 BADGES. AFTER YOU HAVE CHECKED FOR CLEARANCES GO BACK AND TIGHTEN ALL NUTS, BOLTS AND CLAMPS.

**MAKE SURE YOU HAVE A MIMIMUM OF A 1" CLEARANCE AWAY FROM ALL SHOCK BOOTS, BRAKE LINES, FUEL LINES, TIRES, ETC...**