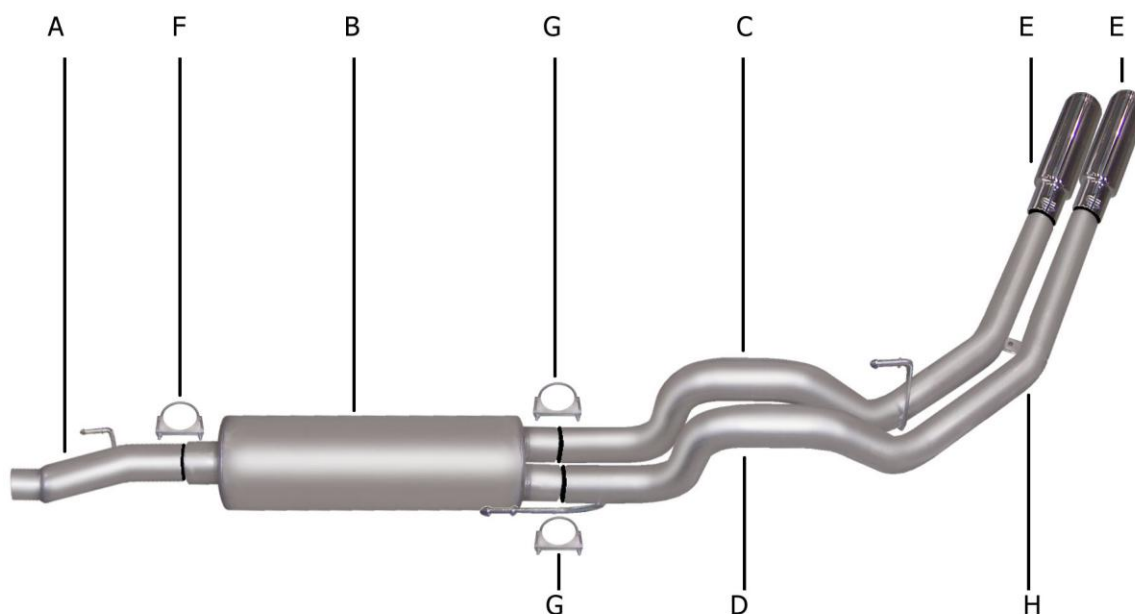




INSTRUCTION MANUAL
CAT-BACK DEEGAN 38 DUAL STAINLESS SPORT EXHAUST
FORD F150 SVT RAPTOR 5.4L TRUCK 4WD
SUPERCAB, SHORT BED
PART # 69120D



ITEM	PART#	QUANTITY	DESCRIPTION
A	1297-701065S	1	3" STAINLESSHEADPIPE
B	789800S	1	SUPERFLOW STAINLESS MUFFLER
C	1397-701133S	1	2.5" STAINLESSPASSENGER SIDE TAILPIPE
D	1396-701134S	1	2.5" STAINLESS DRIVER SIDE TAILPIPE
E	500640-B	2	4" BLACK SS TIP
F	OHD300	1	3" CLAMP
G	5757	2	2.5" CLAMP
H	BO-906	1	BOLT KIT FOR TAILPIPES
I	DE-13	2	DEEGAN 38 BADGE

BOX – 54 X 12 X 20

Thank you for purchasing our GIBSON PERFORMANCE EXHAUST SYSTEM for your vehicle.

If you need further assistance, please do not hesitate to call our Technical department at
1-800-528-3044 Monday through Friday, 8:00 am to 5:00 pm

EXHAUST INSTALLATION #69120D

When installing this exhaust system make sure to use proper safety precautions. Use jack stands when working under the vehicle, set parking brake, block tires and use safety glasses and gloves. Allow exhaust to cool before attempting installation. Severe injury or burns could occur if safety measures are not taken.

SUGGESTED TOOLS:

HACKSAW, JACKSTAND, 1/2" WRENCH & SOCKET, 9/16" SOCKET & WRENCH, WD-40, MEASURING TAPE



TO REMOVE YOUR STOCK EXHAUST, REMOVE IT FROM THE CLAMP LOCATED JUST IN FRONT OF THE MUFFLER REMOVE HANGERS FROM RUBBER GROMMETS BY PULLING EXHAUST TOWARDS THE REAR OF THE VEHICLE, USE WD-40 TO AID IN REMOVAL, LEAVE GROMMETS IN PLACE.



INSTALL DRIVERS SIDE TAILPIPE # D INTO MUFFLER 1 1/2" TO 2". INSERT HANGERS INTO RUBBER GROMMETS, USE CLAMP # G TO SECURE PIPE TO MUFFLER. DO NOT TIGHTEN. THE TAB ON THIS PIPE SHOULD GO ON BOTTOM OF PASSENGER SIDE PIPE USE BOLT KIT # H TO SECURE TOGETHER.



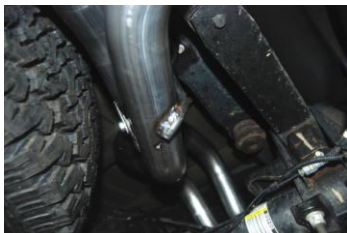
INSTALL HEADPIPE # A INTO STOCK PIPE. THE END OF THE PIPE SHOULD BE AT THE 12 O'CLOCK POSITION, ATTACH WITH FACTORY CLAMP. DO NOT TIGHTEN. INSERT WELDED HANGER INTO RUBBER GROMMET.



INSTALL MUFFLER # B ONTO HEADPIPE 1 1/2" TO 2". USE CLAMP # F TO SECURE MUFFLER TO HEADPIPE. DO NOT TIGHTEN. USE A JACK STAND TO HOLD UP THE MUFFLER. OUTLETS SHOULD BE LEVEL.



INSTALL YOUR BLACK CERAMIC COATED TIPS. PROCEED TO THE NEXT SHEET ON HOW TO INSTALL YOUR DEEGAN 38 BADGES. AFTER YOU HAVE CHECKED FOR CLEARANCES GO BACK AND TIGHTEN ALL NUTS, BOLTS AND CLAMPS.



INSTALL PASS. SIDE TAILPIPE # C INTO MUFFLER 1 1/2" TO 2". INSERT HANGER INTO RUBBER GROMMET, USE CLAMP # G TO SECURE PIPE TO MUFFLER. DO NOT TIGHTEN.

GIBSON EXHAUST systems are designed on a factory stock vehicle. Any aftermarket products installed could increase the sound levels of this Exhaust. **Make sure there is a 1" clearance from ALL rubber brake lines, shock boots, fuel lines, tires, etc to prevent heat related damage .**