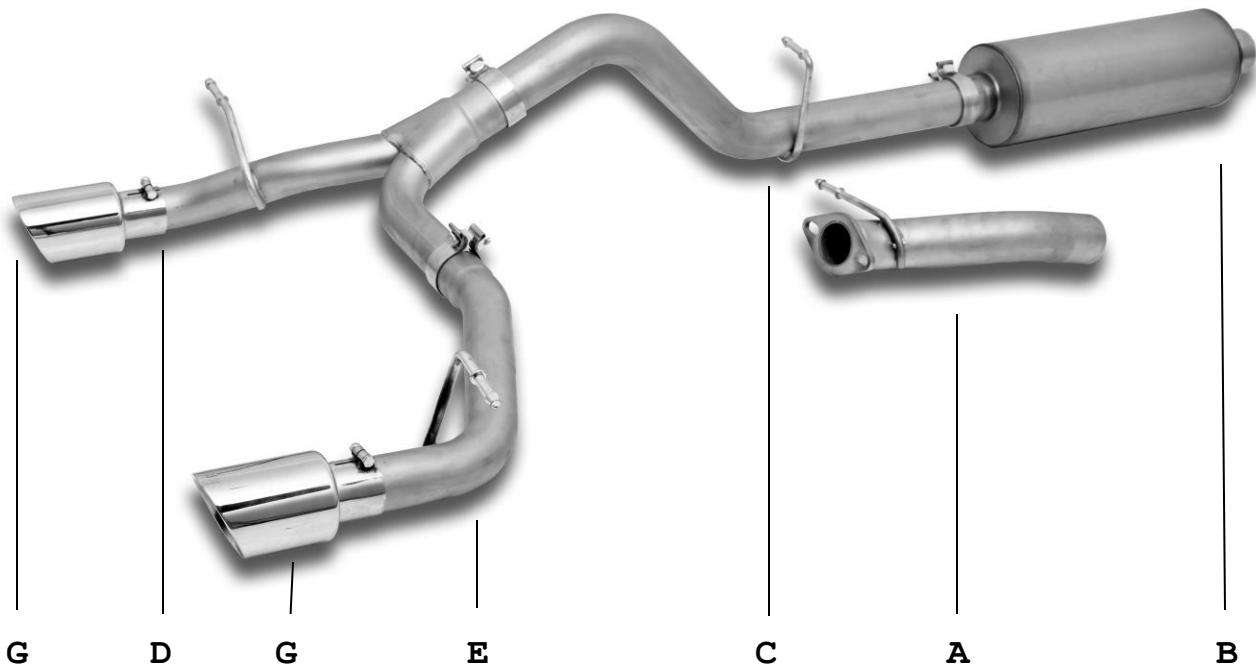




INSTALLATION INSTRUCTIONS

**Stainless Steel Split Rear Cat-Back
2021 Ford Bronco 4 door
2.7L Eco Boost 4x4**

PART #69551



ITEM	PART #	QTY	DESCRIPTION
A	999701116S	1	3.0" Headpipe
B	758221S	1	3.0" SFT Superflow Muffler
C	999701118S	1	3.0" Overaxle pipe w/ hanger
D	999701117S	1	2.50 Y-pipe
E	999701119S	1	Passenger Side Exit pipe
F	800049	2	Exit pipe hanger
G	500417	2	4.0" Stainless Steel Tip
H	5763	3	3.0" Band Clamp
I	5762	1	2.50" Band Clamp
J	BO-1045	1	Hanger Bolt kIt

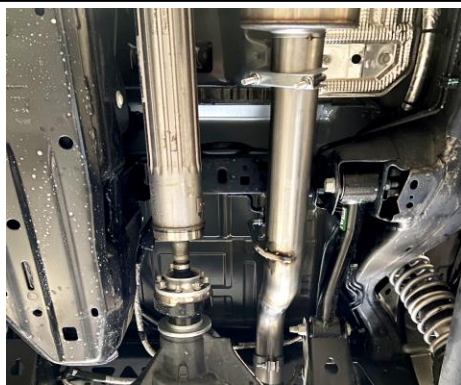
**Thank you for purchasing our Gibson Exhaust system for your vehicle.
If you need further assistance, please do not hesitate to call our technical dept at (800) 528-3044
Monday through Friday, 8:00 am to 5:00 pm. 10/21**

EXHAUST INSTALLATION

WHEN INSTALLING THIS EXHAUST SYSTEM MAKE SURE TO USE ALL THE PROPER SAFETY PRECAUTIONS. USE JACK STANDS WHEN UNDER TRUCK, SET PARKING BRAKE, BLOCK TIRES AND USE SAFETY GLASSES.

DO NOT WORK WITH HOT PIPES!!!

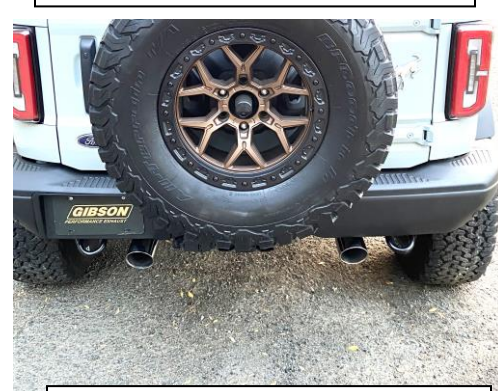
1. Disconnect the negative battery cable before removal of the OEM Exhaust. This will allow the computer to reset and recognize the new exhaust. Lay out the exhaust on the floor so it looks like the drawing and compare parts with manual. Remove the factory exhaust by Un bolting the rear muffler assembly just above the rear axle. Once the tail pipe has been removed un-bolt the muffler and head pipe at the flanges located behind the catalytic converters. Use wd-40 or another type of penetrating oil to remove the rubber grommets. Do not damage these they will be re used.



2. Install Headpipe Item # A onto the factory flange using factory bolts. Install muffler with louvers opening towards the rear of the vehicle. Facing them forward will reduce sound levels and quality of sound.

3. with Muffler in place install your over axle pipe. Keep everything loose until all is installed. Be sure to not bottom out the hanger into the factory grommet. It will create vibration.

4. Install the rear supplied Hanger brackets to the factory frame rail. There will be large existing holes in the frame for the hangers to be installed to. Keep loose until everything is installed



5. Install the y pipe and insert the hanger into the factory rubber grommet on the supplied Gibson hanger. Install the driver side pipe as well. Keep in mind the length the pipe is slid on will change the angle of the tip. Make adjustments until it fits correctly.

6. Install the tips. They were designed to have a .75" of an inch clearance from the bumper. Adjust pipes and all connections to find that perfect fit. Begin to tighten all connections from the front to the back. Double check you tip exit locations after each connection is tight.

7 After your vehicle has gone through a few heat cycles re torque all your clamps and double check fitment. Use soap and water to clean your black ceramic coated stainless steel tips.

"MAKE SURE YOU HAVE A 1" CLEARANCE ON ALL PIPES FROM ALL RUBBER BRAKE LINES, SHOCK BOOTS, TIRES, ETC..." TORQUE ALL CLAMPS TO APPROX. 100 TO 150 FT LBS.