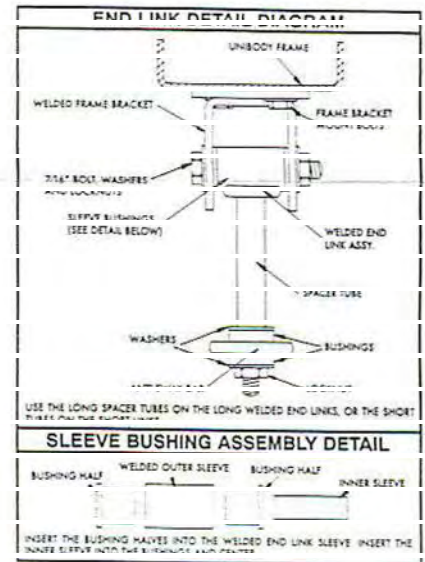
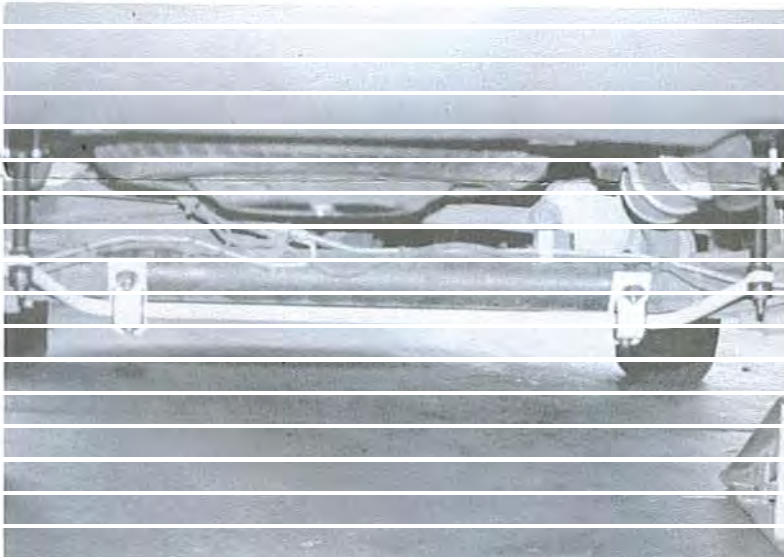
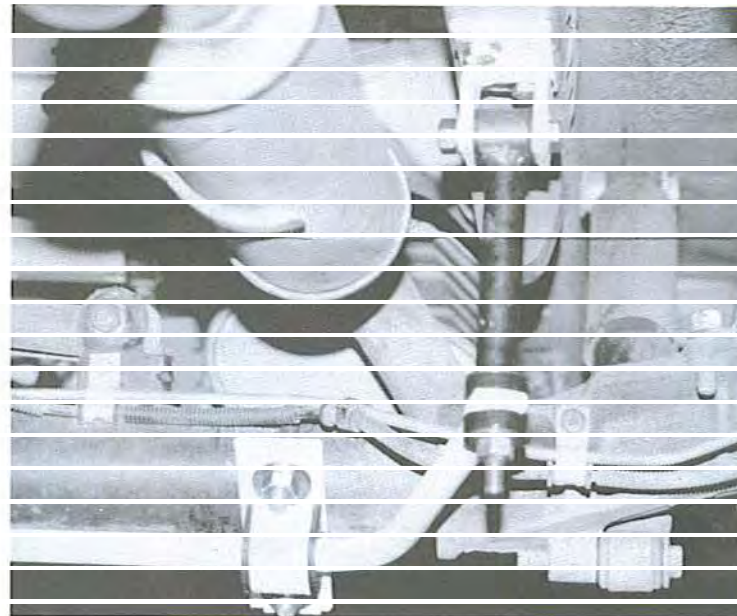
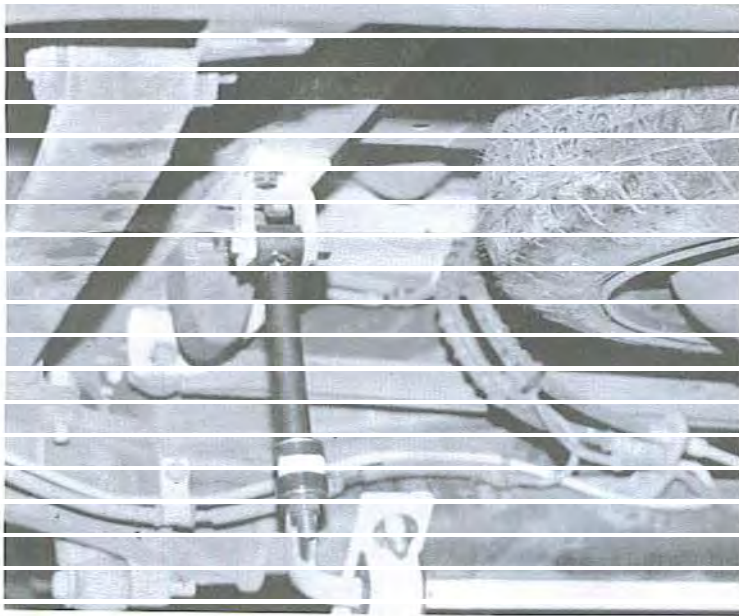




HELLWIG INSTALLATION INSTRUCTIONS

FACTORY AND GENERAL OFFICES • 16237 AVENUE 296, VISALIA, CA 93292 • (209) 734-7451

READ THIS INSTRUCTION SHEET COMPLETELY BEFORE STARTING YOUR INSTALLATION



ATTENTION INSTALLER: BE SURE THE CUSTOMER RECEIVES THIS INSTRUCTION SHEET, ALL IMPORTANT NOTE CARDS, WARNING CARDS, AND THE WARRANTY FORM.



HELLWIG INSTALLATION INSTRUCTIONS

FACTORY AND GENERAL OFFICES • 16237 AVENUE 296, VISALIA, CA 93292 • (209) 734-7451

READ THIS INSTRUCTION SHEET COMPLETELY BEFORE STARTING YOUR INSTALLATION

TORQUE RATES

$\frac{3}{8}$ inch = 20-30 ft. lbs. $\frac{7}{16}$ inch = 35-45 ft. lbs. $\frac{1}{2}$ inch = 50-70 ft. lbs. $\frac{9}{16}$ inch = 70-90 ft. lbs.

NOTE: THIS ANTI-SWAY BAR MOUNTS ON TOP OF THE AXLE WITH THE ARMS POINTING TO THE REAR OF THE VEHICLE.

1. Install the frame brackets for the end links on each frame rail, using the preexisting holes provided located rear of the axle. (See Photos and Diagrams.)
2. Install the axle hardware and bushings as shown in Photo. Be sure brake lines are outside the U-bolt legs and cannot be damaged when tightening U-bolts. Complete both sides. LEAVE LOOSE at this point to allow for adjustment.
3. Install the shackle per line drawings and Photo. DO NOT OVERTIGHTEN the self locking nuts. Tighten just enough to bulge the bushings slightly, approximately $\frac{1}{16}$ ".
4. Adjust the shackle to a vertical or near vertical position by moving the anti-sway bar on the axle and by moving the frame hardware. Torque all mounting hardware to the specified rates. Double nut the axle U-bolts.
5. Check your installation. Be sure all undercarriage components, exhaust pipes, brake lines, fuel lines, etc., will not touch the newly installed anti-sway bar and cannot be damaged during full suspension travel. Bounce the vehicle for further checks. Adjust installation as needed.
6. Recheck the installation after one week's driving and every thirty (30) days thereafter.

ATTENTION INSTALLER: BE SURE THE CUSTOMER RECEIVES THIS INSTRUCTION SHEET, ALL IMPORTANT NOTE CARDS, WARNING CARDS, AND THE WARRANTY FORM.