



X-ACT CONTOUR

FLOOR LINERS

CARE AND USE INSTRUCTIONS – PN:53721

Thank you for selecting Xact Contour™ Front Floor Liners from Winfield Consumer Products. Your new front floor liners are custom molded to fit your specific vehicle's floor board. The liners are made to take the place of your factory floor mats. **For correct fit, it is necessary to remove the factory floor mats before installing your new floor liners.** However, do not remove the factory-installed carpeting.

When installing your floor liners, first remove the four (4) factory mat retention hooks from your vehicle's floor (see back of page for details). Screw in the supplied carpet screw retention fasteners, install the Xact Contour liner over the carpet screws aligning the holes and thread on the carpet screw cap to finish.

Your liners are made from an engineering resin that is lightweight and extremely tough and durable. The easiest way to clean your liners is with a damp cloth or sponge and soap and water. Windex®, 409® and ArmorAll® type cleaners work as well.

LEFT OR DRIVER

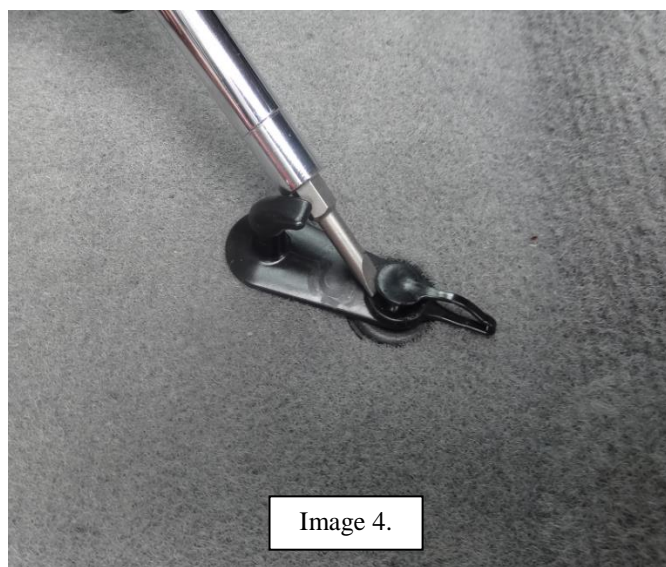
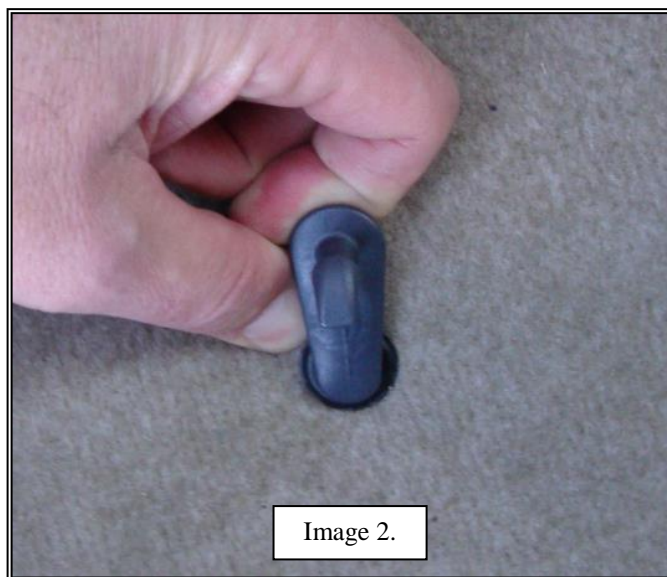


RIGHT OR PASSENGER

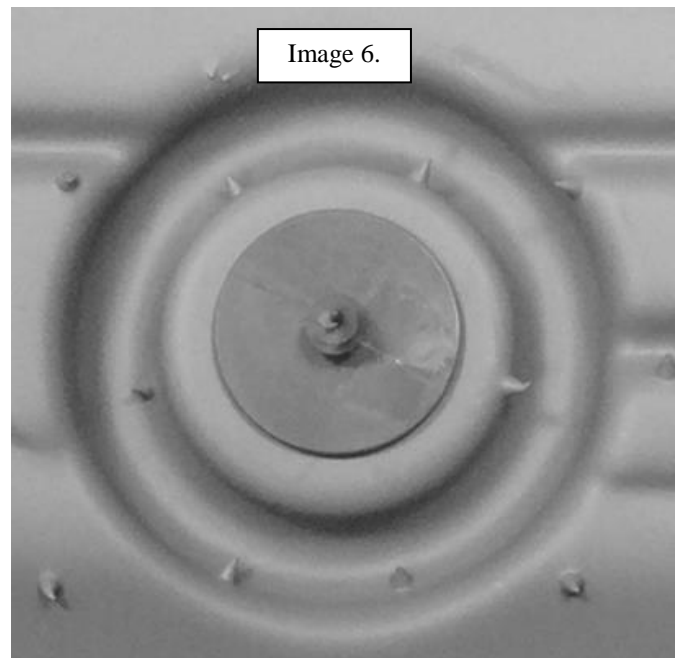
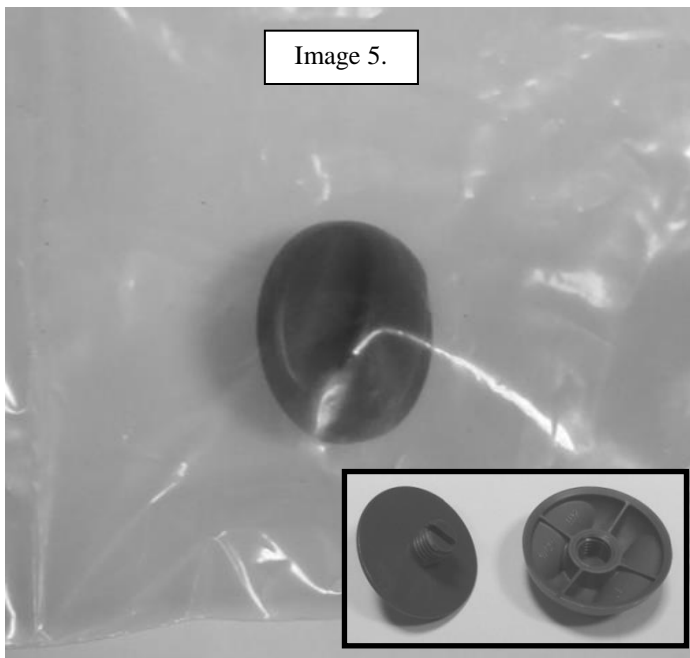


HUSKY FLOOR LINER RETAINING CLIP INSTALLATION INSTRUCTIONS FOR USE IN VEHICLES WITH REMOVABLE FACTORY MAT HOOKS

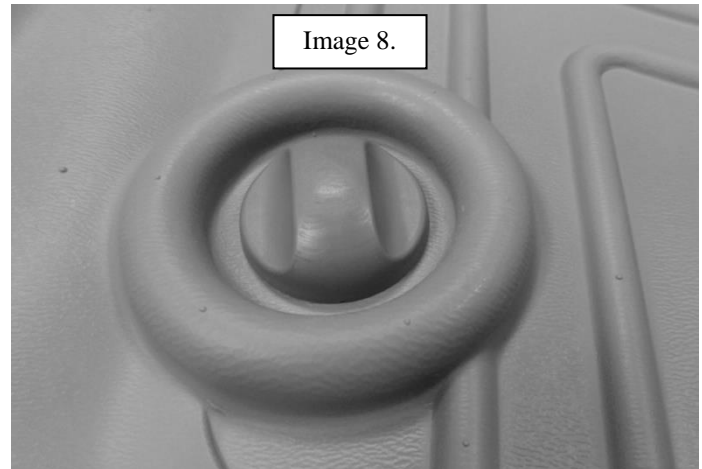
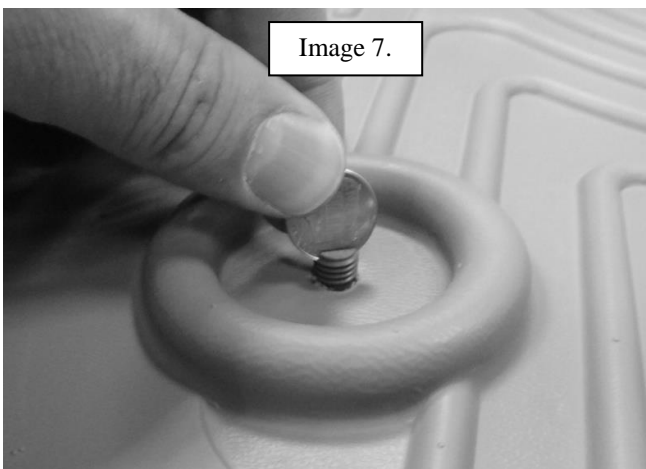
REMOVE THE EXISTING FACTORY MAT HOOK AS SHOWN IN IMAGE 1 AND IMAGE 2 BELOW. MODERATE EFFORT IS REQUIRED TO POP THE FACTORY HOOKS OUT. NEWER GENERATIONS OF THE FACTORY HOOK HAVE A CENTER SPREADER THAT MUST FIRST BE REMOVED BEFORE THE HOOK WILL RELEASE. SEE IMAGES 3 AND 4 BELOW. ONCE THE SPREADER IS REMOVED, THE HOOK WILL POP OUT JUST AS WITH THE OLDER STYLE HOOKS. YOU CAN WATCH A YOUTUBE VIDEO OF THE HOOK REMOVAL BY ACCESSING THIS LINK-- http://www.youtube.com/watch?v=5P-d_BkQ6Uc.



WITH THE FACTORY CLIPS REMOVED, UNSCREW THE TWO HALVES OF THE HUSKY® RETAINING CLIP AND INSERT THE BOTTOM HALF INTO THE LINER AS SHOWN BELOW IN IMAGE 5 AND IMAGE 6.



WITH THIS DONE INSTALL THE LINER IN THE VEHICLE AND, USING A COIN, SCREWDRIVER OR SIMILAR TOOL, SCREW THE BASE OF THE FASTENER INTO THE CARPETING (SEE IMAGE 7). LASTLY, AS SHOWN IN IMAGE 4, INSTALL THE CAP ONTO THE BASE. TIGHTEN UNTIL THE CAP MEETS RESISTANCE, DO NOT OVER TIGHTEN.



IF YOU HAVE ANY QUESTIONS REGARDING THE INSTALLATION OF YOUR HUSKY® LINER RETAINING CLIPS, JUST GIVE US A CALL MONDAY THROUGH FRIDAY FROM 8:00 AM – 5:00 PM CENTRAL TIME AT 800-344-8759 OR E-MAIL US AT: contactus@huskyliners.com.