



# WHEEL WELL LINERS 06-14 FORD F150

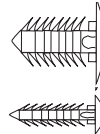


Driver Side Wheel Well (A)

### LIST OF CONTENTS:

- (A) 1 - Driver Side Wheel Well
- (B) 1 - Passenger Side Wheel Well

- (C) 2 - Large Christmas Tree Fastener
- (D) 4 - Small Christmas Tree Fastener



Passenger Side Wheel Well (B)

### TOOLS REQUIRED:



- Ratchet using 10mm socket in steps 3 & 4, 10 & 11.
- Drill with 1/4" drill bit in steps 5 & 8.
- Utility knife in step 7.
- Easy removal tool or flat screwdriver in step 6.

## INSTALLATION INSTRUCTIONS

Installation Video available @ [huskyliners.com/79101](http://huskyliners.com/79101)

**1** PLEASE READ INSTRUCTIONS CAREFULLY BEFORE STARTING THE INSTALLATION. One person can perform the installation.

**2** VEHICLE PREPARATION: It is important that all areas where the wheel wells mount are clean and free of debris prior to installing.

**3** Support Rod

Start on the driver's side using a ratchet with a 10mm socket to remove the fastener holding the support rod toward the cab. (Save the fastener).

**4** Support Rod

Start on the driver's side using a ratchet with a 10mm socket to remove the fastener holding the support rod toward the tail. (Save the fastener).

**7**

Trim the excess length of the existing lower Christmas tree fastener with a utility knife, leaving approximately 1/8" of the length.

**5** Drill

Use a drill with a 1/4" drill bit and drill a hole through the existing mark at the bottom lower corner in the sheet metal toward the cab.

**6** Flat Tool

Use a flat tool to remove the fastener from the bottom lower corner in sheet metal toward the tail and discard it.

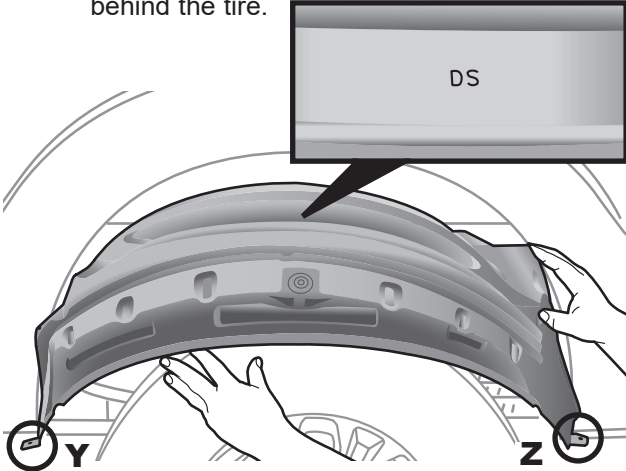
**8** 04

Use a drill with 1/4" drill bit and drill hole in the center of the dimple marked as (04) located on the rear face of the liner.



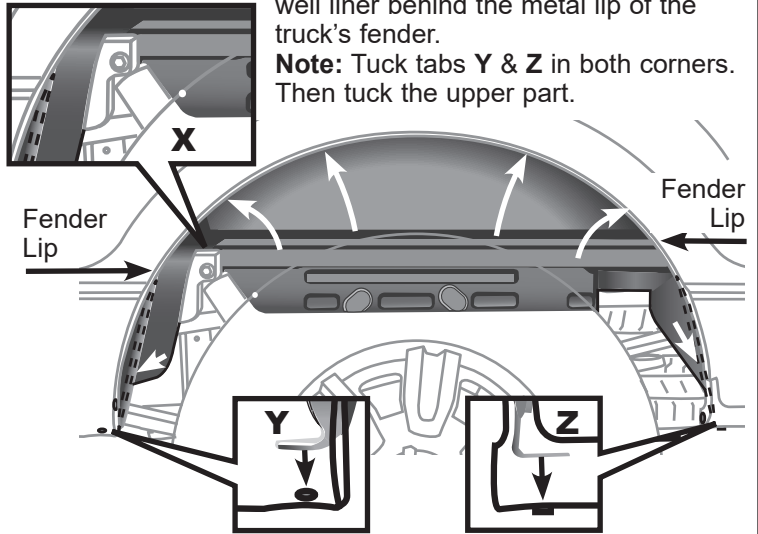
# WHEEL WELL LINERS 06-14 FORD F150

**8** Start on the driver side by setting the driver side wheel well (A) marked as (DS) inside the inner panel of the truck's wheel well behind the tire.

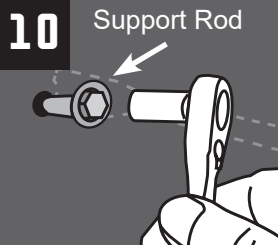


Make sure each tab **Y & Z** with hole are tucked inside the bottom corners of the fender.

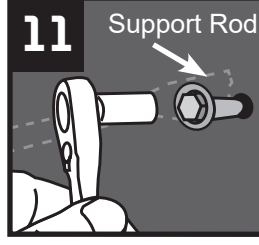
**9** **Note:** Make sure the liner goes over the shock and shock mounting bracket. See figure **X**. Tuck the bottom sides of the lower part of the wheel well liner behind the metal lip of the truck's fender.



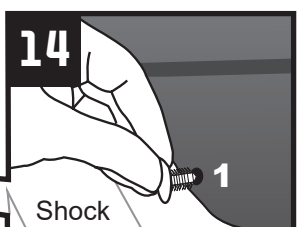
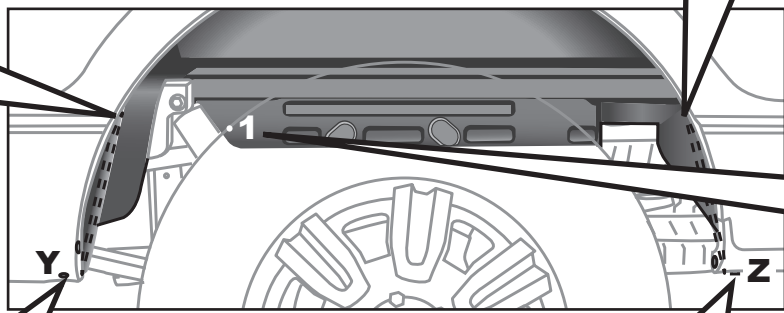
**Note:** Tuck tabs **Y & Z** in both corners. Then tuck the upper part.



Re-install the fastener saved in step 3 using a ratchet with a 10mm socket through the existing hole in the liner and into the hole in the fender. Make sure the support rod is behind the liner.

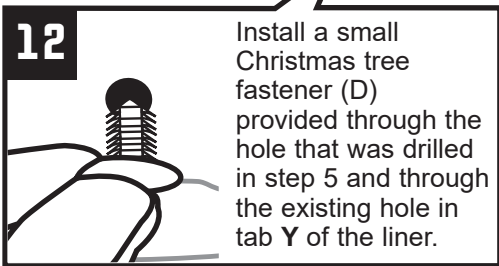


Re-install the fastener saved in step 4 using a ratchet with a 10mm socket through the existing hole in the liner and into the hole in the fender toward the tail. Make sure the support rod is behind the liner.

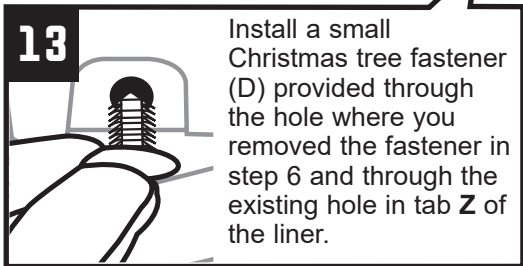


Shock

Locate the (1) pre-drilled hole near the bottom section of the liner and insert a large Christmas tree fastener (C) through the existing hole in the liner and into the existing hole in the frame.



Install a small Christmas tree fastener (D) provided through the hole that was drilled in step 5 and through the existing hole in tab **Y** of the liner.



Install a small Christmas tree fastener (D) provided through the hole where you removed the fastener in step 6 and through the existing hole in tab **Z** of the liner.

**15** Repeat steps 3-14 on the passenger side when installing the passenger side wheel well (B).

Installation Video available @ [huskyliners.com/79101](http://huskyliners.com/79101)