



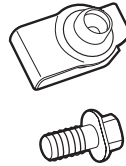
# WHEEL WELL LINERS

## FORD F-250/F-350

### LIST OF CONTENTS:

- (A) 1 - Driver Side Wheel Well  
 (B) 1 - Passenger Side Wheel Well

- LIK61 KIT:  
 (C) 4 - J-Clips  
 (D) 4 - Screws



Driver Side Wheel Well (A)



Passenger Side Wheel Well (B)

### TOOLS REQUIRED:

- Ratchet using 10mm socket in steps 3, 4 & 7.

## INSTALLATION INSTRUCTIONS

Installation Video available @ [huskyliners.com/79131](https://www.huskyliners.com/79131)

**1**

**PLEASE READ INSTRUCTIONS CAREFULLY BEFORE STARTING THE INSTALLATION.**  
 One person can perform the installation.

**2**

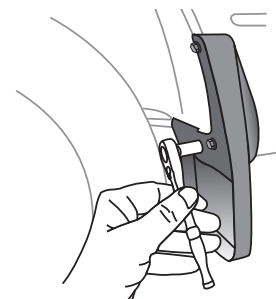
#### VEHICLE PREPARATION:

It is important that all areas where the wheel wells mount are clean and free of debris prior to installing.

**3**

#### For Trucks with Mud Flaps:

Remove mud flaps before installing wheel well liners.  
 Then follow steps 4-8.  
 Re-install mud flaps.

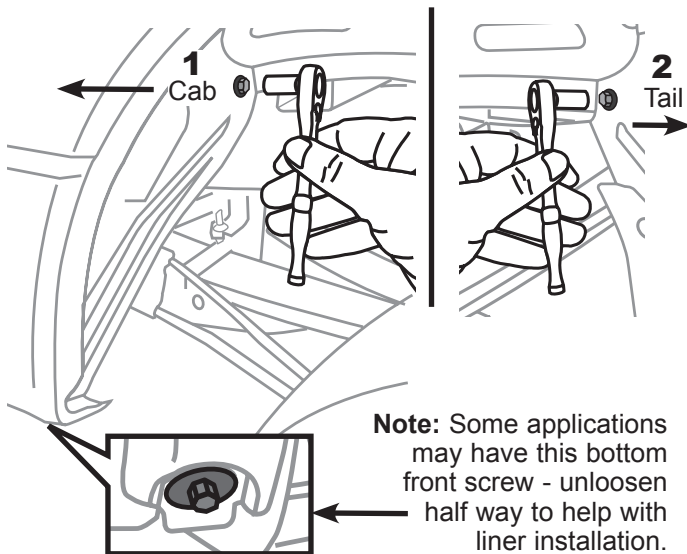




## WHEEL WELL LINERS FORD F-250/F-350

- 4** Start on the driver side using a ratchet with 10mm socket to remove the fastener toward the cab end of the wheel housing **1**. Then remove the fastener toward the tail end of wheel housing **2**. (Save the fasteners).

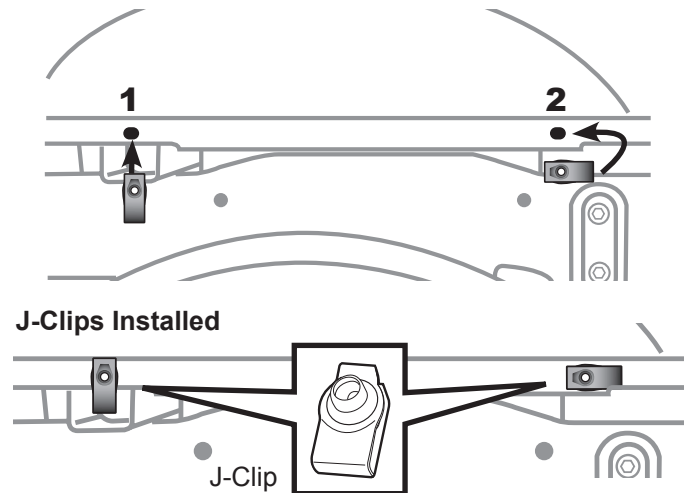
**Note:** Ford F150 application - No fastener toward cab to remove.



- 5** Locate the two holes at the back area of the wheel housing and insert one J-Clip (C) in each hole **1 & 2**.

**Note:** Due to some variations in Super Duty trucks - you might have to turn J-Clip (C) sideways and hold it behind the metal flange because of the return lip at bottom edge of wheel house flange near hole **2**.

Shows Orientation of J-Clips Facing Cab

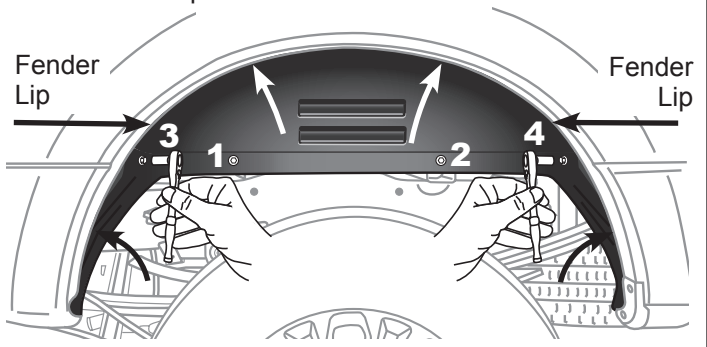


- 6** Start on the driver side by setting the driver side wheel well (A) marked as (DS) inside the inner panel of the truck's wheel well behind the tire.



- 7** Tuck the liner behind the metal fender lip. Starting in the rear, first tuck the bottom lower part of the liner behind the metal lip of the truck's fender. Then work towards the front. Finish by tucking in the front lower part of the liner. Then install two screws (D) provided in places **1 & 2** using a ratchet with 10mm socket. After that re-install the two fasteners saved in step 4 in places **3 & 4**.

**Note:** Ford F150 application - No fastener toward cab to replace.



- 8** Repeat steps 3-7 on the passenger side when installing the passenger side wheel well (B).

Installation Video available @ [huskyliners.com/79131](http://huskyliners.com/79131)