

# HUSKYLINERS®

## weatherBEATER

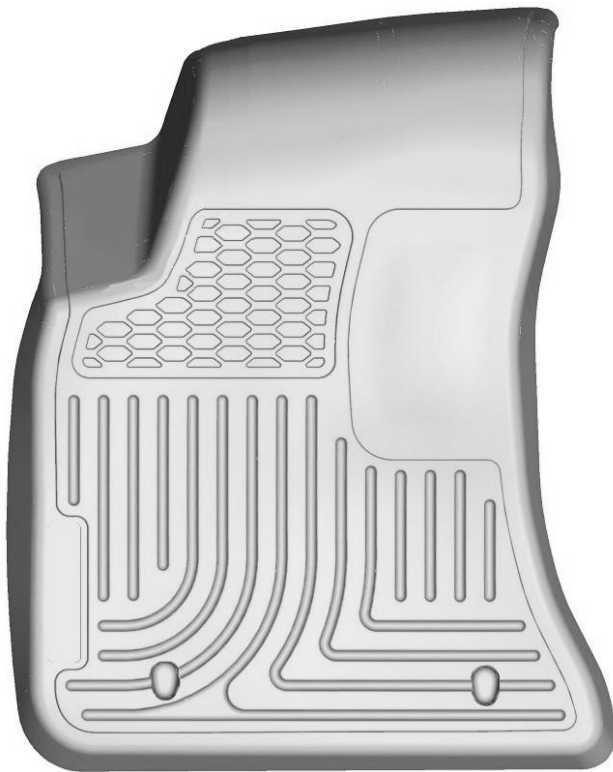
### CARE AND USE INSTRUCTIONS

---

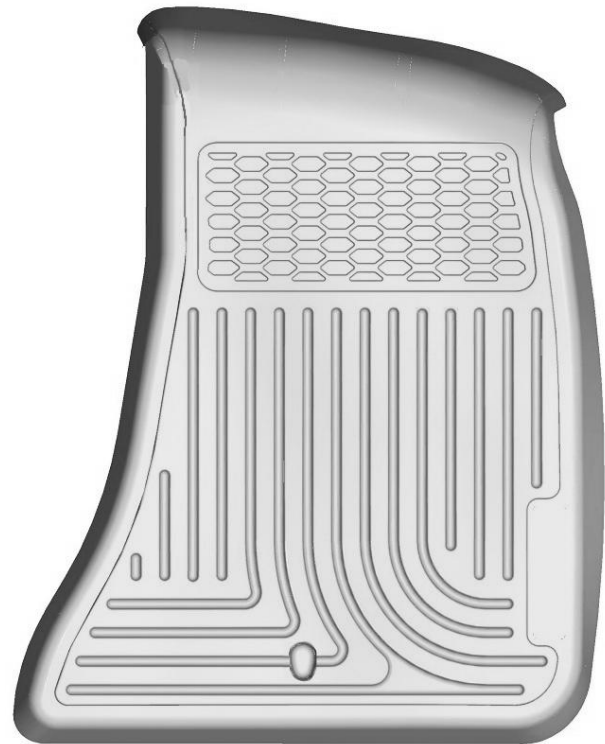
Thank you for selecting a WeatherBeater® Floor Liner from Winfield Consumer Products. Your new front floor liners are custom molded to fit your Dodge Challenger. The liners are made to take the place of your factory floor mats. **For correct fit, it is necessary to remove the factory floor mats before installing your new floor liners.** However, do not remove the factory-installed carpeting.

Your liners are made from an engineering resin that is lightweight and extremely tough and durable. The easiest way to clean your liners is with a damp cloth or sponge. If using a cleaner, 409® or Glass Plus® work well. Use of Armor All®, Son-of-a-Gun® or similar items is discouraged as these products make the liners slick.

### INSTALLATION INSTRUCTIONS FOR YOUR DODGE CHALLENGER WeatherBeater FLOOR LINERS



LEFT OR DRIVER'S SIDE



RIGHT OR PASSENGER'S SIDE

TO EASE INSTALLATION OF YOUR CHALLENGER FRONT FLOOR LINERS, MOVE THE FRONT SEATS TO THEIR REAR MOST POSITION. ONCE YOU HAVE INSTALLED THE LINERS, REPOSITION YOUR FRONT SEATS AS NEEDED.

# HUSKYLINERS®

## weatherBEATER

### CARE AND USE INSTRUCTIONS

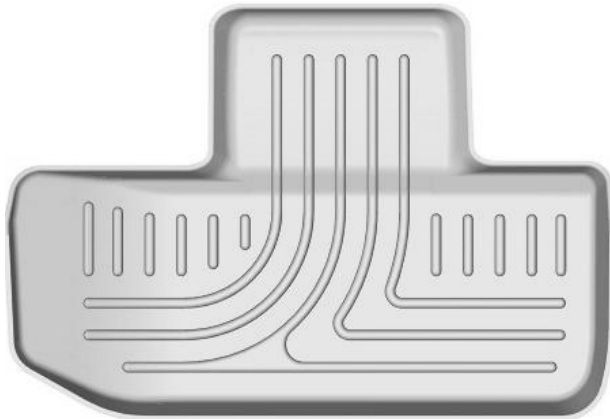
---

Thank you for selecting a WeatherBeater® Floor Liner from Winfield Consumer Products. Your new rear floor liner is custom molded to fit your Dodge Challenger. The liner is made to take the place of your factory floor mats. **For correct fit, it is necessary to remove the factory floor mats before installing your new floor liners.** However, do not remove the factory-installed carpeting.

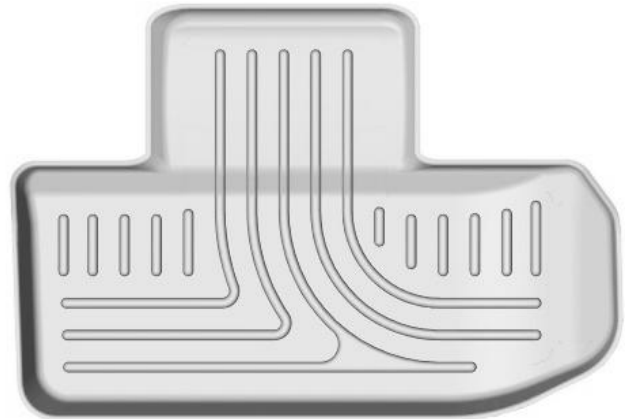
Your liner is made from an engineering resin that is lightweight and extremely tough and durable. The easiest way to clean your liner is with a damp cloth or sponge. If using a cleaner, 409® or Glass Plus® work well. Use of Armor All®, Son-of-a-Gun® or similar items is discouraged as these products make the liner slick.

## INSTALLATION INSTRUCTIONS FOR YOUR DODGE CHALLENGER REAR SEAT WeatherBeater FLOOR LINERS

FRONT OF  
VEHICLE



LEFT OR DRIVER'S SIDE



RIGHT OR PASSENGER'S SIDE

TO EASE INSTALLATION OF YOUR CHALLENGER SECOND SEAT LINERS, MOVE THE FRONT SEATS TO THEIR MOST FORWARD POSITION. WITH THIS DONE, INSTALL LINERS IN VEHICLE. ONCE LINERS ARE IN PLACE, REPOSITION THE FRONT SEATS AS NEEDED.