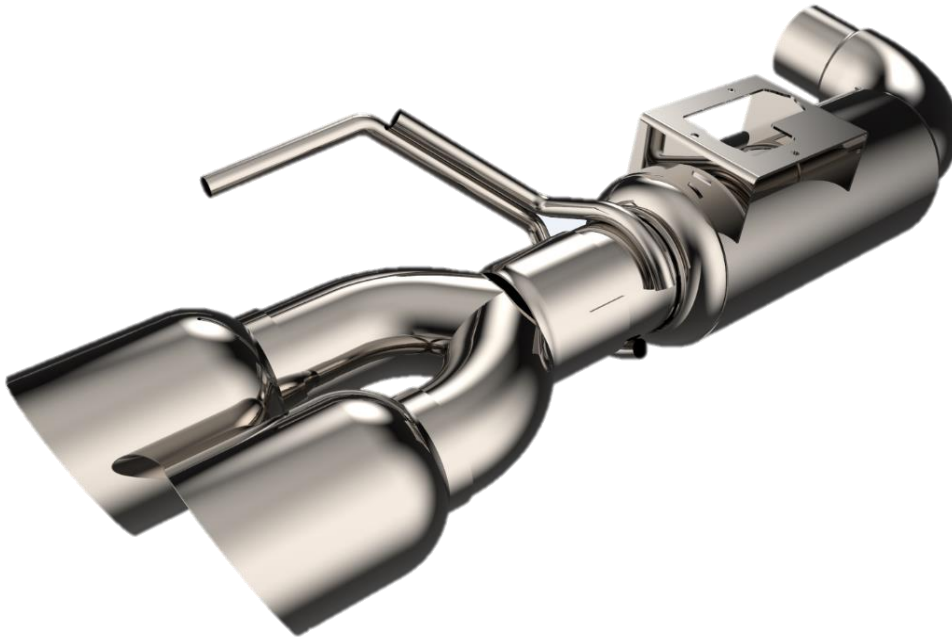
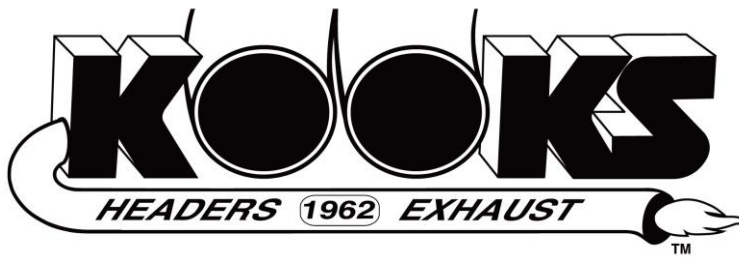


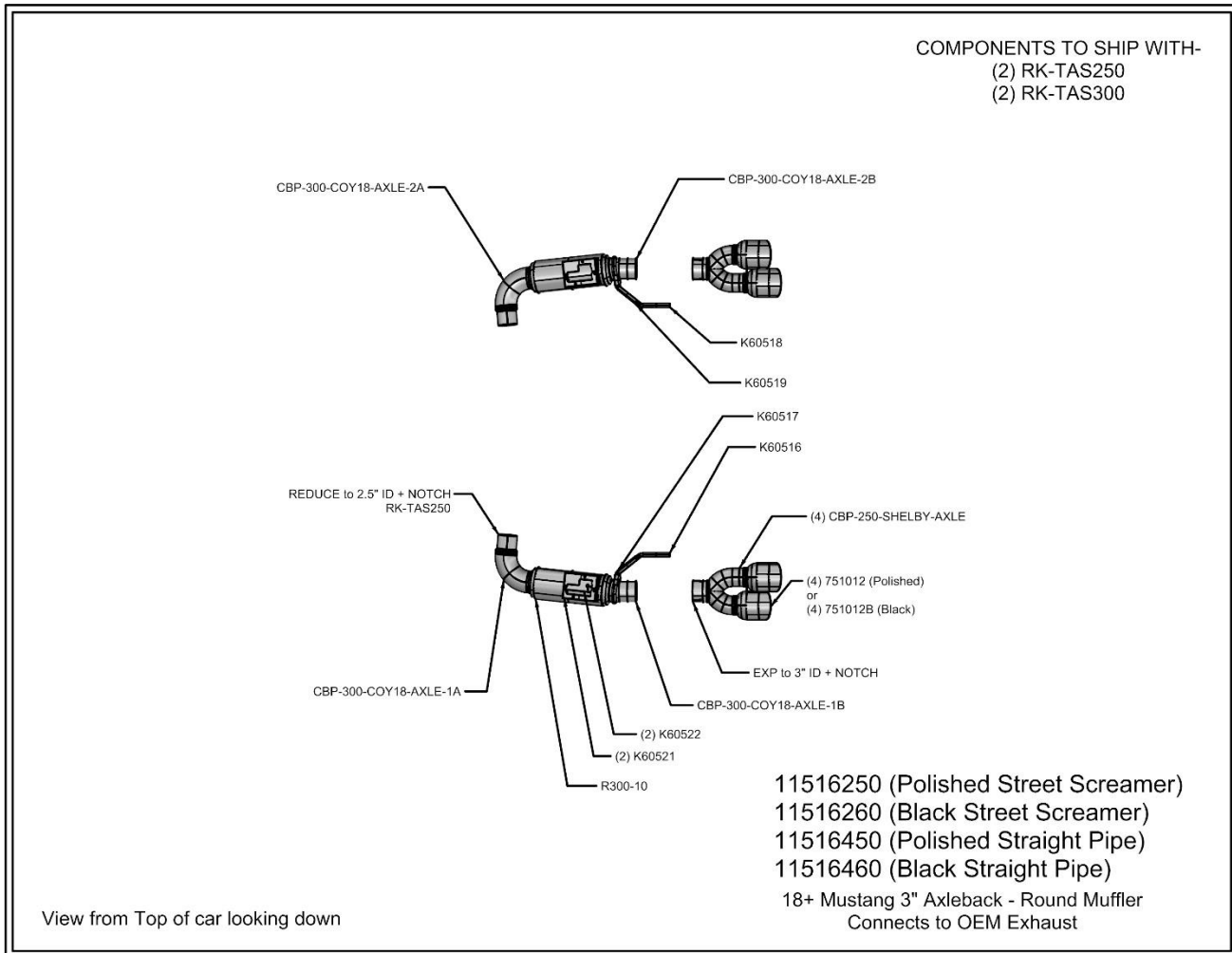
2018+ Ford Mustang Axle Back Installation Instructions

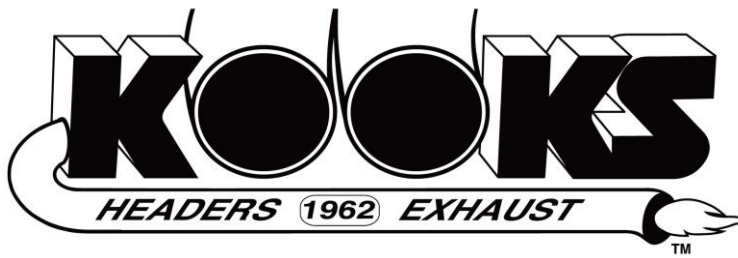


Versions Covered:
Straight Pipe and Street Screamer (Pictured)



System Layout





Do not attempt this installation if proper safety equipment is not available to you.
Seek the assistance of a professional installer.

Requires cutting of the factory exhaust system.

Read and understand all instructions before beginning.

To install this system, the following tools are suggested:

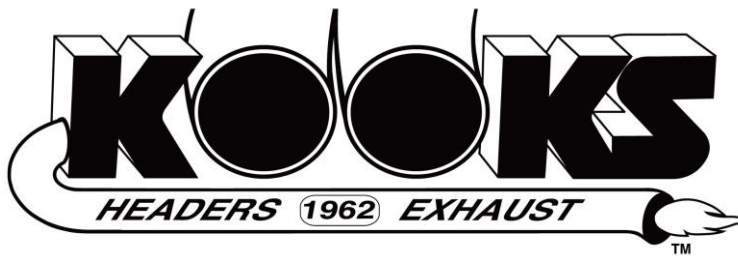
- Vehicle Lift or Jack and 4 Jack Stands
- Ratchet Set ($\frac{1}{4}$ " & $\frac{3}{8}$ " Drive)
- Metric Socket Set ($\frac{1}{4}$ " & $\frac{3}{8}$ " Drive)
- Extensions ($\frac{1}{4}$ " & $\frac{3}{8}$ " Drive)
- Pry Bar Set
- O² Socket ($\frac{7}{8}$ " Wrench)
- Gasket Scraper
- Metric Wrench Set
- Exhaust Hanger Pliers (or groove joint pliers)
- Standard Screwdriver Set
- Safety Glasses
- Paint Pen or Marker
- Vehicle Service Manual
- Thread Locker
- Penetrating Oil
- Anti-seize
- Cable Ties

VEHICLE PREPARATION

****Raise and Support Vehicle (Refer to Owner's Manual for specified jacking points). ****

***Always disconnect the negative battery terminal before performing this type of work on any vehicle. ***

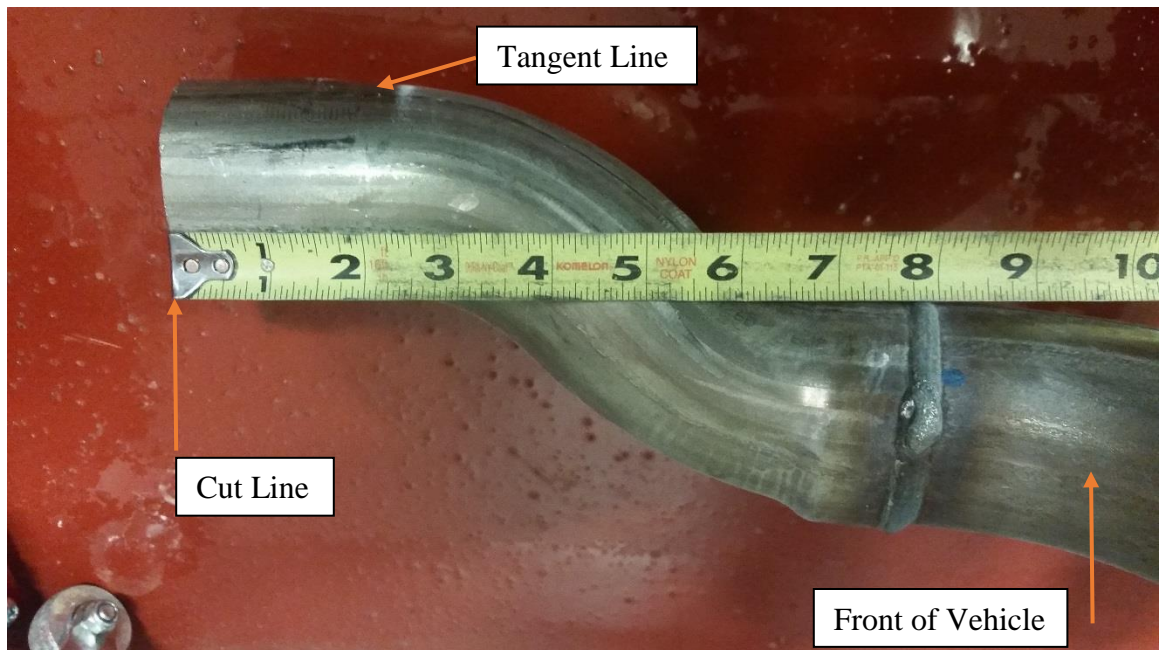
It is a good idea to spray penetrating oil on the rusted hardware before you start to help loosen them. While the lube is doing its job, you can start the install.



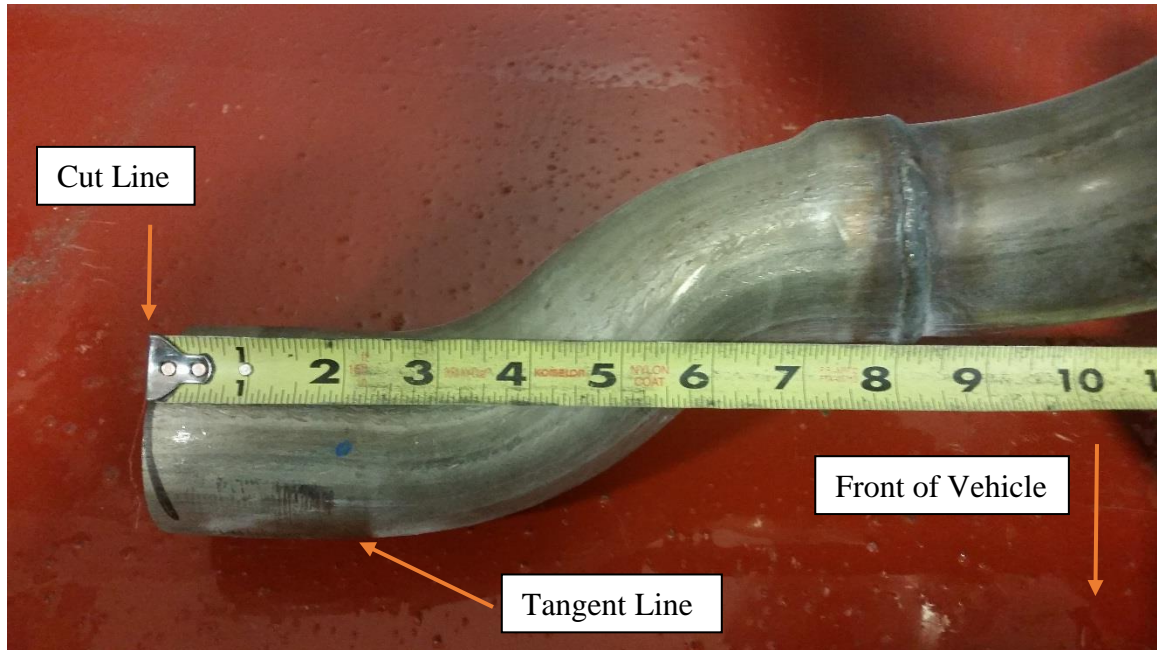
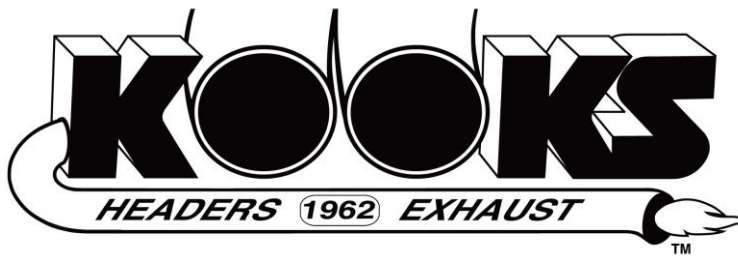
STOCK AXLE BACK REMOVAL PROCESS

STEP 1.

- The factory system must be cut to install the axle back. All cuts can be done on the car.
- Unbolt the farthest back hanger assembly from the car (2 bolts on each side). These hangers are hooked onto the frame so they will not fall when unbolting.
- Disconnect actuator valve from ire harness.
- Measure 2 inches back from the tangent line of the bends directly after the factory welds located just behind the rear differential on each tube, along centerline of the tube (refer to pictures below).
- Mark tubes accordingly (or tape them). Support the weight of the muffler assembly and cut the factory tubes.
- Carefully remove the muffler assembly and the hanger assembly. The hanger assembly will be reused.
- Unbolt actuator motor from muffler assembly (3 nuts on each side). Leave spring connected to motor. All of this will be reused.



[Driver side viewed from the top.]



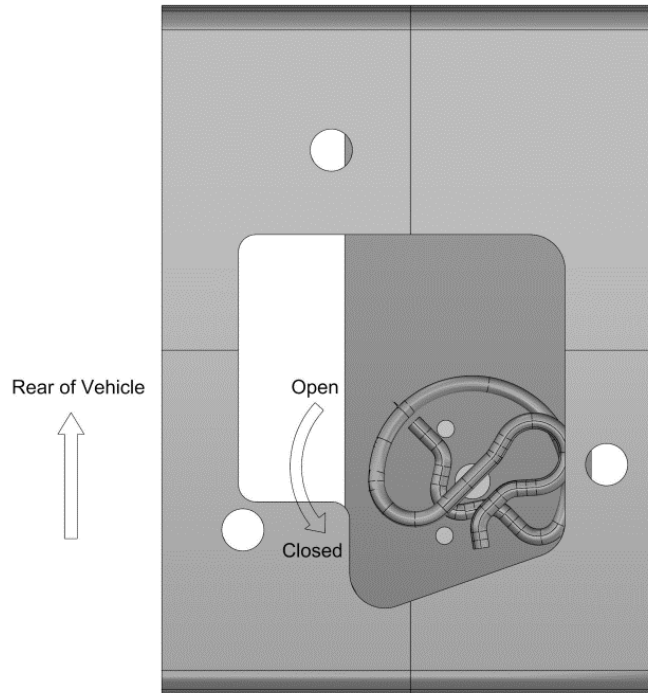
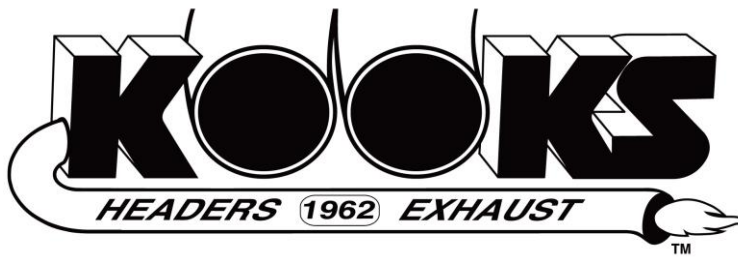
[Passenger side viewed from the top.]

KOOKS AXLE BACK INSTALLATION PROCESS

****Clamps should be torqued to 40-45 ft. lbs.****

STEP 1. Kooks Axle Back Install

- Install hanger assembly onto axle back, note there is a left and right side.
- Bolt valve motor to bracket on muffler with supplied fasteners. See drawing below for how this is installed. Spring will go to the "Open" position.
- Slip the provided 2.5" band clamps over the factory exhaust tubes; do not tighten.
- Install the Kooks Axle-Back exhaust onto the factory tubes.
- Hook OEM hanger assembly into slots on car.
- Install hanger bolts (2 on each side) and torque to OEM specifications.
- Reconnect valve motor to wire harness.
- Slip on Tip section with supplied 3" band clamps.



18+ Mustang Actuator Motor Mount

STEP 2. Exhaust Alignment

- Align the exhaust clear of all obstructions and position tips where desired.
- Tighten all clamps to specified torque.

STEP 3. Inspection

- Start Engine and check for any Exhaust Leaks.
- Allow Vehicle to complete one heat cycle (Heat to temp and allow for cooling).
- Re-torque clamps.

**Thank you for your purchase, we appreciate your business.
If additional assistance is needed, please contact Kooks Custom Headers
Toll free at 1-866-586-KOOK or contact your local dealer.**