



DRYFLOW[®]

AIR INTAKE SYSTEMS

NOT LEGAL FOR SALE OR USE ON ANY POLLUTION CONTROLLED MOTOR VEHICLE IN CALIFORNIA OR STATES ADOPTING CALIFORNIA EMISSION PROCEDURES.

See knfilters.com for CARB status on each part for a specific vehicle

INSTALLATION INSTRUCTIONS

30-1542

DODGE / CHRYSLER

2009-19 Challenger

2006-19 Charger

2005-19 300c

2005-08 Magnum R/T

V8-5.7L HEMI

2008-10 Challenger SRT8

2006-10 Charger SRT8

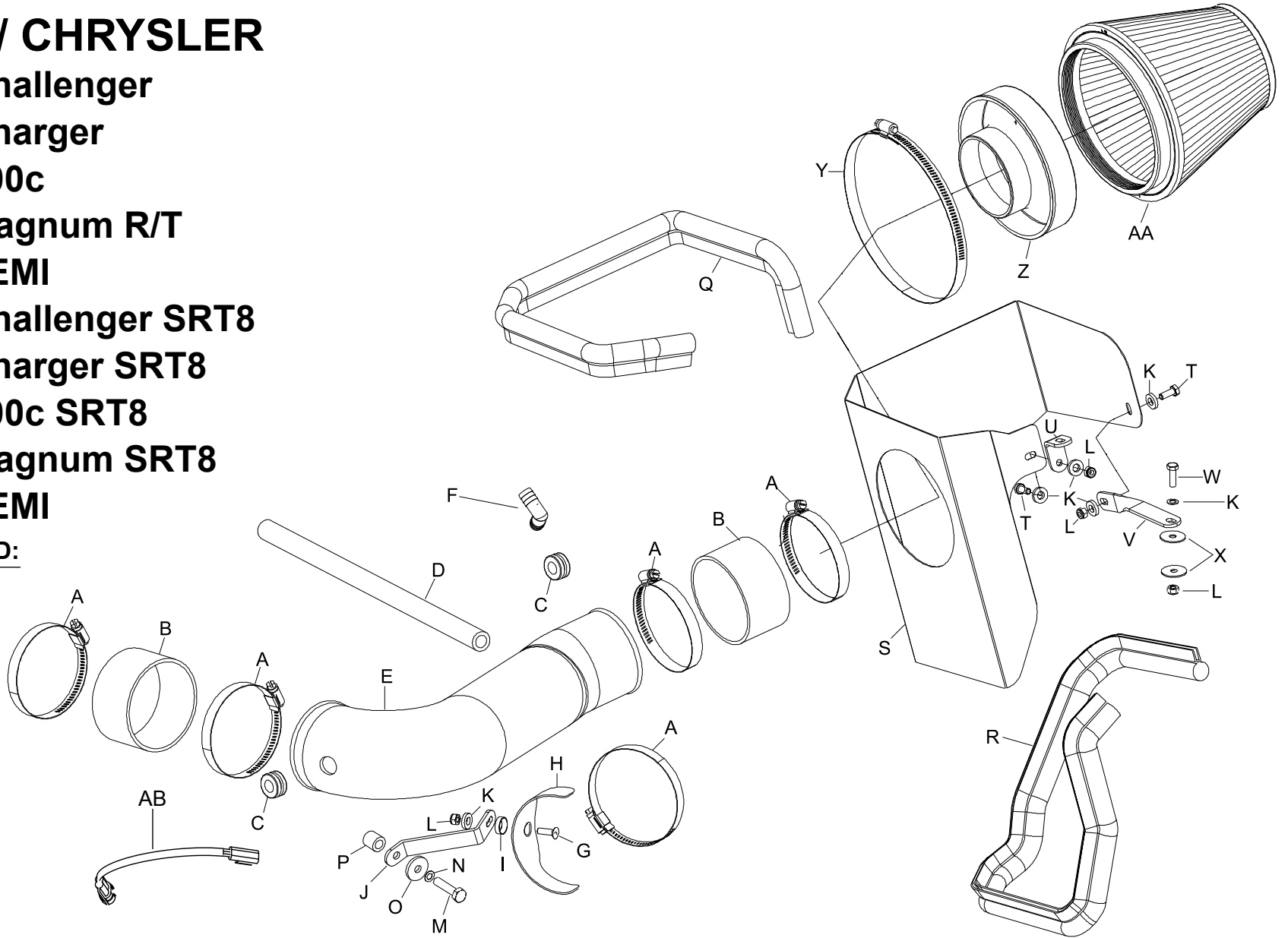
2005-10 300c SRT8

2006-08 Magnum SRT8

V8-6.1L HEMI

TOOLS NEEDED:

- Ratchet
- Extension
- 10mm Socket
- 13mm Socket
- 4mm Allen Key
- 10mm Wrench
- Saw
- Drill Motor
- 3/4" Drill Bit
- Flat Blade Screw Driver



PARTS LIST:

Description	Qty.	Part #	Description	Qty.	Part #	Description	Qty.	Part #
A HOSE CLAMP; #56	5	08620	J BRACKET; "Z", SM.	1	010088A	S HEAT SHIELD	1	07498A
B HOSE; 3.5"ID X 2"L	2	08630	K WASHER; 1/4"ID X 5/8"OD	6	08275	T BOLT; M6-1.00 X 16MM, HEXHD	2	07703
C GROMMET; 1"OD, 1/2"ID, 1/2"THK	2	08064	L NUT; 6MM NYLOCK HEXHD	4	07553	U BRACKET; "L" SM.	1	070066A
D HOSE; 1/2"ID X 17"L	1	08177	M BOLT; 8MM-1.25 X 35MM, HEXHD	1	07784	V BRACKET; TWIST, SHORT	1	070772A
E INTAKE TUBE; (EM)	1	087153A	N WASHER; 8MM SPRING (WAVE)	1	08239	W BOLT; M6-1 X 20MM, HEXHD	1	07865
F FITTING; VENT, ELBOW, 1/2 BARB	1	08065	O WASHER; 5/16"ID X 5/8"OD, FLAT	1	08276	X WASHER; 1" X 1/4" HOLE FENDER	2	08160
G BOLT; M6-1.00 X 20MM, F/H/A	1	08376	P SPACER; .625"OD X .375"ID X .63"L	1	07849	Y HOSE CLAMP; #104 BLK	1	08697KA
H BRACKET; SADDLE	1	078855	Q EDGE TRIM; (30"L)	1	102489	Z ADAPTER; UNIV. 6" FILTER	1	21512-1
I WASHER; CONICAL, NYLON	1	08180	R EDGE TRIM; (39"L)	1	102496	AA AIR FILTER	1	RU-3102HBK
						AB EXTENSION HARNESS	1	21680

If you need any assistance please call 1-800-858-3333 to speak with a representative in our Customer Service Center before returning the product.

NOTE: FAILURE TO FOLLOW INSTALLATION INSTRUCTIONS AND NOT USING THE PROVIDED HARDWARE MAY DAMAGE THE INTAKE TUBE, THROTTLE BODY AND ENGINE.

TO START:

1. Turn off the ignition and disconnect the negative battery cable.
NOTE: Disconnecting the negative battery cable erases pre-programmed electronic memories. Write down all memory settings before disconnecting the negative battery cable. Some radios will require an anti-theft code to be entered after the battery is reconnected. The anti-theft code is typically supplied with your owner's manual. In the event your vehicles anti-theft code cannot be recovered, contact an authorized dealership to obtain your vehicles anti-theft code.



2. Lift the engine cover up and remove it from the vehicle.



3. Disconnect the IAT sensor electrical connection.



4. Loosen the hose clamp that secures the intake tube to the throttle body and disconnect the tube from the throttle body.



5. On 5.7L equipped models, disconnect the CCV hose from the port on the valve cover.



6. On 6.1L equipped models, disconnect the CCV hose from the air filter housing.



7. Remove the bolt that secures the air filter housing to the core support.



8. Remove the complete intake assembly from the vehicle.



9. Install the heat shield mounting bracket onto the core support using the provided hardware.



10. Install the small "L" bracket onto the heat shield as shown using the provided hardware.



11. Install the edge trim onto the heat shield as shown, some trimming of the edge trim will be necessary.



12. Install the heat shield and secure with the provided hardware.



13. Due to vehicle manufacturer tolerances, The A/C lines on some vehicles may need to be repositioned slightly so that they do not contact the heat shield. To adjust, grab the A/C line in the aluminum section and carefully apply pressure in the desired direction until clearance is obtained.



14. Assemble the tube mounting bracket and saddle as shown using the provided hardware.



15. Install the tube mounting bracket assembly using the provided hardware and spacer.



16. Install the provided coupler onto the throttle body and secure with the provided hose clamp.



17. Remove the IAT sensor from the factory intake system. Remove the O-ring from the sensor and then install it into the K&N intake tube using the provided grommet.



18. On 6.1L equipped models, cut the vent port off the K&N intake tube at the base.



19. Drill out the hole to 3/4" id.



20. Install the provided 90-degree vent fitting and grommet.



21. Install the intake tube into the coupler at the throttle body and saddle clamp, secure the tube with the provided hose clamps.



22. On 5.7L equipped models, install the provided CCV hose onto the valve cover vent port and then connect to the K&N intake tube port.



23. On 6.1L equipped models, Connect the factory CCV hose to the 90-degree fitting installed into the intake tube and then connect the open end to the port on the valve cover.



24. Install the filter adapter into the K&N filter and secure with the provided hose clamp.



25. Install the coupler onto the filter adapter and secure with the provided hose clamp.



26. Install the filter assembly onto the intake tube and secure with the provided hose clamp.



27. Reconnect the IAT sensor electrical connection.



28. Reinstall the engine cover.



29. Reconnect the vehicle's negative battery cable. Double check to make sure everything is tight and properly positioned before starting the vehicle.

30. It will be necessary for all K&N® high flow intake systems to be checked periodically for realignment, clearance and tightening of all connections. Failure to follow the above instructions or proper maintenance may void warranty.

ROAD TESTING:

1. Start the engine with the transmission in neutral or park, and the parking brake engaged. Listen for air leaks or odd noises. For air leaks secure hoses and connections. For odd noises, find cause and repair before proceeding. This kit will function identically to the factory system except for being louder and much more responsive.

2. Test drive the vehicle. Listen for odd noises or rattles and fix as necessary.

3. If road test is fine, you can now enjoy the added power and performance from your kit.

4. K&N Engineering, Inc., requires cleaning the intake system's air filter element every 50,000 miles. When used in dusty or off-road environments, our filters will require cleaning more often. We recommend that you visually inspect your filter once every 25,000 miles to determine if the screen is still visible. When the screen is no longer visible some place on the filter element, it is time to clean it. To clean, purchase our Synthetic Filter Cleaner, part number 99-0624 and follow the easy instructions.

NOT LEGAL FOR SALE OR USE ON ANY POLLUTION CONTROLLED MOTOR VEHICLE IN CALIFORNIA OR STATES ADOPTING CALIFORNIA EMISSION PROCEDURES.

See knfilters.com for CARB status on each part for a specific vehicle