



INTAKE SYSTEMS FOR VEHICLES LISTED ARE 50 STATE LEGAL. SEE KNFILTERS.COM FOR CARB STATUS ON EACH PART FOR A SPECIFIC VEHICLE.

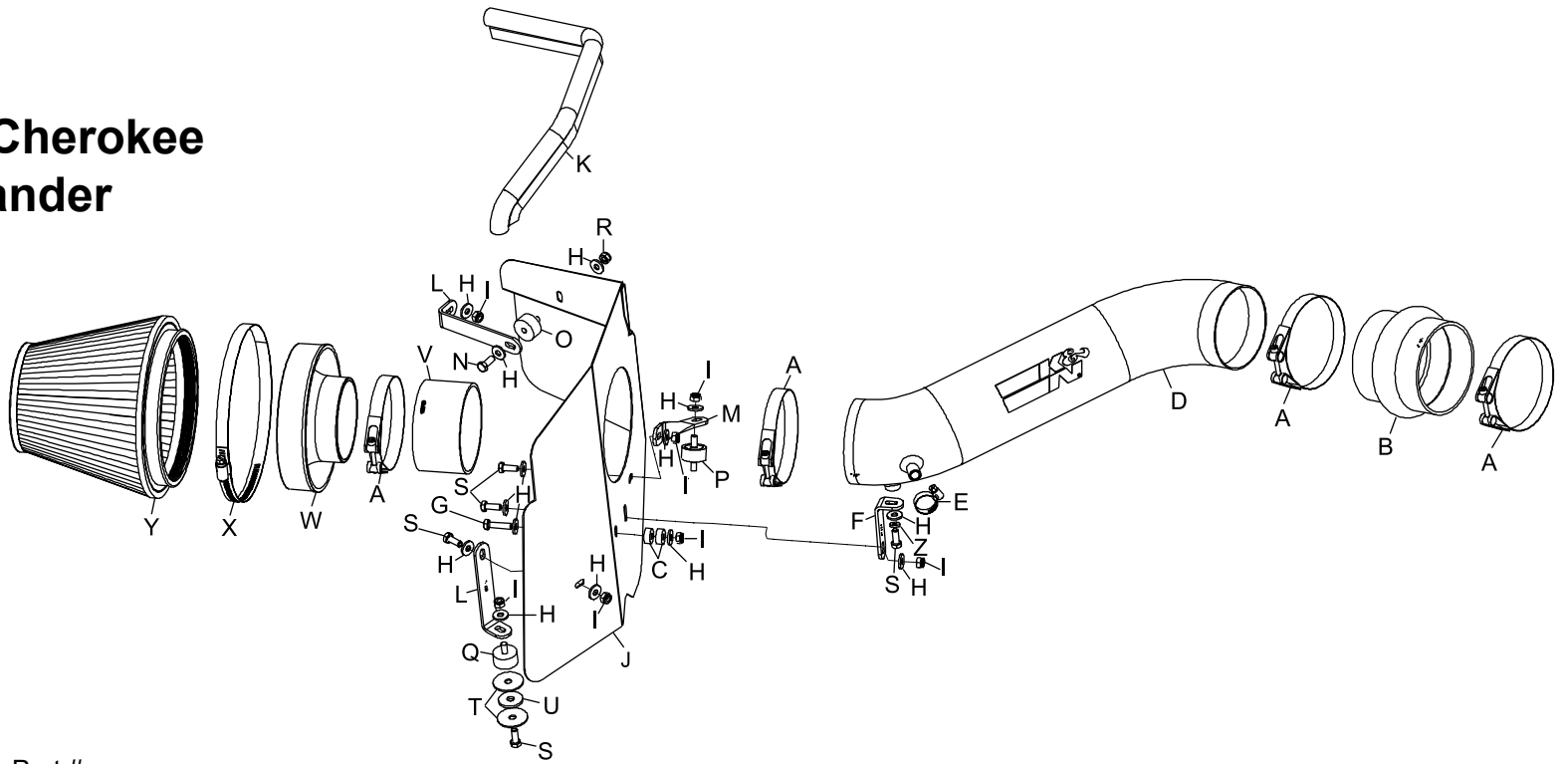
INSTALLATION INSTRUCTIONS

77-1545KP JEEP 2005-10 Grand Cherokee 2006-10 Commander V6-3.7L

NOTE: This kit was not designed to fit vehicles with a body lift.

TOOLS NEEDED:

- Flat Blade Screwdriver
- Ratchet
- Extension
- 8mm Socket
- 10mm Socket
- 10mm Wrench
- 7/16" Wrench
- 9/64" Allen Wrench



PARTS LIST:

Description	Qty.	Part #	Description	Qty.	Part #	Description	Qty.	Part #
A HOSE CLAMP; #56	4	08620	H WASHER; 1/4"ID X 5/8"OD	14	08275	O STUD; 1/4-20 RUBBER	1	070226
B HOSE; HUMP 3-5/8" TO 3.5"ID	1	084056	I NUT; 6MM NYLOCK	7	07553	P STUD; M6-1.00 RUBBER	1	07027
C SPACER; .625"OD X .250"ID	2	06555	J HEAT SHIELD	1	07321	Q STUD; RUBBER	1	070228
D INTAKE TUBE; (BRIGHT)	1	127429AKP	K EDGE TRIM; 17"L	1	102469	R NUT; 1/4"-20 NYLOCK	1	07517
E HOSE CLAMP; #6 MINI	1	108407	L BRACKET; "L" LG.	2	070952A	S BOLT; M6-1.00 X 16MM	5	07703
F BRACKET; "L"	1	07131	M BRACKET; TWIST	1	010117	T WASHER; 1.25"OD X .28	2	08151
G BOLT; M6-1 X 25MM	1	07704	N BOLT; 1/4-20 X 1/2"	1	08317	U WASHER; 1" X .300"	1	21685
						V HOSE; 3.5"ID X 2"L	1	08698
						W ADAPTER' 6" FILTER	1	21512-1
						X HOSE CLAMP; #104	1	08697
						Y AIR FILTER	1	RU-1048
						Z WASHER; 1/4" LOCK	1	08198

NOTE: FAILURE TO FOLLOW INSTALLATION INSTRUCTIONS AND NOT USING THE PROVIDED HARDWARE MAY DAMAGE THE INTAKE TUBE, THROTTLE BODY AND ENGINE.

TO START:

1. Turn off the ignition and disconnect the negative battery cable.
NOTE: Disconnecting the negative battery cable erases pre-programmed electronic memories. Write down all memory settings before disconnecting the negative battery cable. Some radios will require an anti-theft code to be entered after the battery is reconnected. The anti-theft code is typically supplied with your owner's manual. In the event your vehicles' anti-theft code cannot be recovered, contact an authorized dealership to obtain your vehicles anti-theft code.



2. Loosen the hose clamp, which secures the stock intake tube to the intake plenum, and disconnect the crankcase vent hose from the airbox lid.



3. Unclip the upper airbox retaining clips and remove the upper airbox and intake tube assembly as shown.



4. On vehicles equipped disconnect the vacuum canister hose shown.



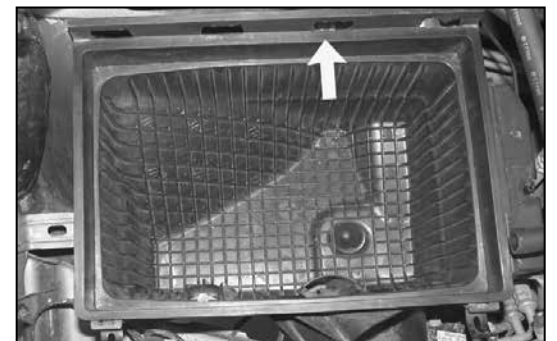
5. Using a small screwdriver, release the center holding pins in the six grill retaining clips shown.



6. Remove the six grill retaining clips from the grill, then tilt the grill forward and remove from the vehicle.



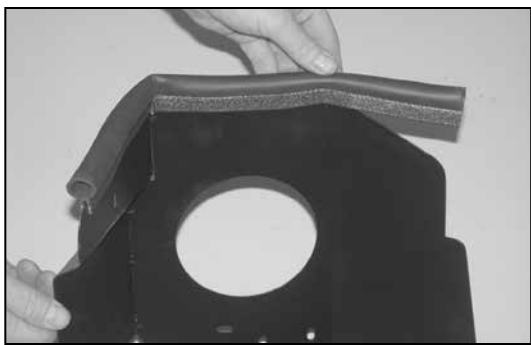
7. Pull the fresh air duct to disconnect it from the airbox and then remove it from the vehicle.



8. Remove the airbox mounting bolt shown.



9. Remove the lower airbox from the vehicle as shown.
NOTE: K&N Engineering, Inc., recommends that customers do not discard factory air intake. NOTE: It may be necessary to loosen and move the windshield washer bottle to remove the lower airbox.

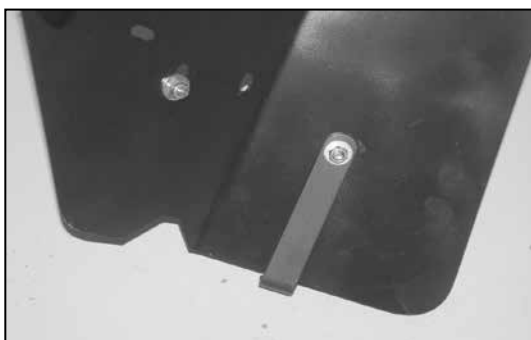


10. Install the provided edge trim onto the heat shield as shown.

NOTE: Some trimming of the edge trim may be necessary.

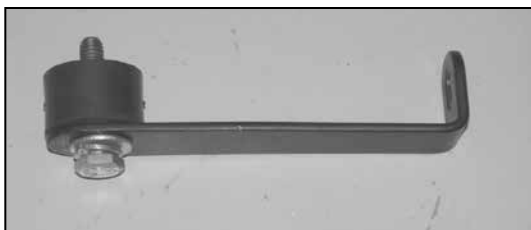


11. Install the tube mounting bracket (07131) onto the heat shield with the provided hardware as shown.

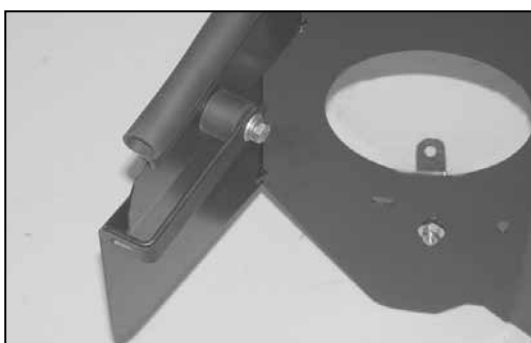


12. Install the "L" bracket (070952) onto the heat shield with provided hardware as shown.

NOTE: The bracket mounts on the inside of the heat shield with the "L" positioned to the outside of the heat shield.



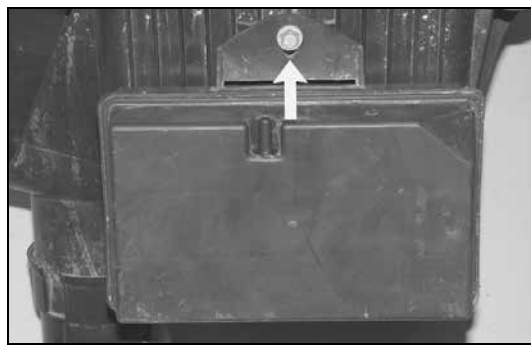
13. Install the 1/4"-20 male/female rubber mounted stud onto the "L" bracket (070952) with the provided hardware as shown.



14. Install the bracket/rubber mounted stud assembly onto the heat shield as shown using the provided hardware.



15. Install the twist bracket onto the heat shield as shown using the provided hardware.

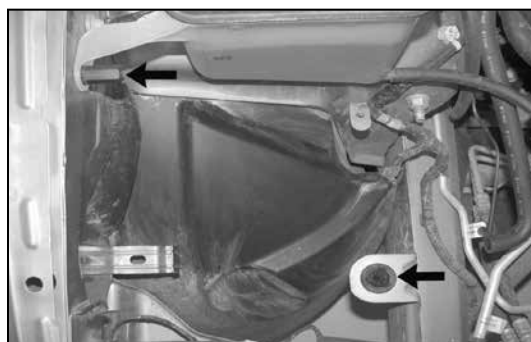


16. On vehicles equipped remove the bolt which secures the vacuum reservoir to the airbox and then remove the reservoir from the airbox.



17. On vehicles equipped with vacuum reservoir, using the provided spacer, install the vacuum reservoir onto the heat shield as shown.

NOTE: Due to manufacturing tolerances, 2 spacers may be needed.



18. Remove the coolant reservoir retaining nut and airbox mounting grommet shown.



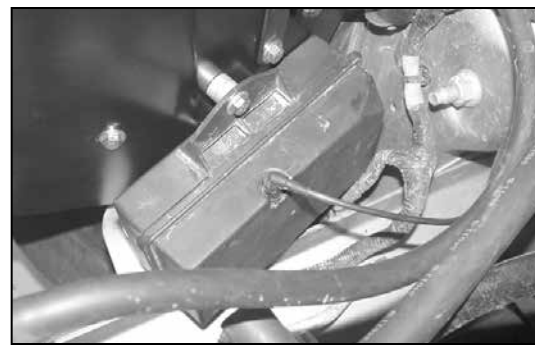
19. Using the two fender washers and one rubber washer, install the 6mm male/female rubber mounted stud onto the lower airbox mount as shown.



20. Install the 6mm male/male rubber mounted stud onto the upper airbox mount as shown.



21. Install the heat shield assembly into the vehicle and secure it to the mounting locations with the provided hardware.



22. On vehicles equipped reconnect the vacuum reservoir vacuum line.



23. Install the silicone hose (084056) onto the intake plenum and secure with the provided hose clamp as shown.



24. Install the K&N® intake tube into the silicone hose at the throttle body and onto the bracket. Secure the tube with the provided hose clamp and hardware.



25. Connect the crankcase vent hose onto the K&N® intake tube as shown and secure with the provided hose clamp.

NOTE: Some trimming of the factory vent hose may be necessary.



26. Install the filter adapter into the air filter as shown, secure with the provided hose clamp.

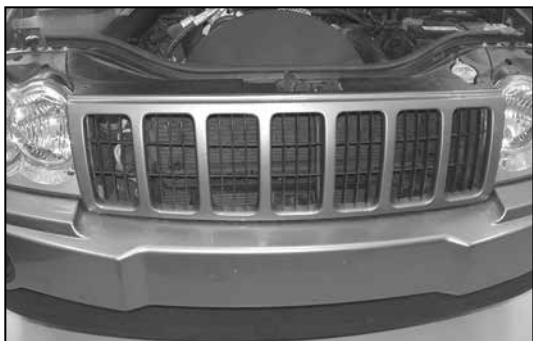


27. Install the silicone hose (08698) onto the air filter assembly and secure with the provided hose clamp.



28. Install the air filter assembly onto the K&N® intake tube as shown and secure with the provided hose clamp.

NOTE: Drycharger® air filter wrap; part # RF-1048DK is available to purchase separately. To learn more about Drycharger® filter wraps or look up color availability please visit <http://www.knfilters.com>®.



29. Reinstall the grill assembly with the factory retaining clips removed in step #5.



30. Reconnect the vehicle's negative battery cable. Double check to make sure everything is tight and properly positioned before starting the vehicle.

31. The C.A.R.B. exemption sticker, (attached), must be visible under the hood so that an emissions inspector can see it when the vehicle is required to be tested for emissions. California requires testing every two years, other states may vary.

32. It will be necessary for all K&N® high flow intake systems to be checked periodically for realignment, clearance and tightening of all connections. Failure to follow the above instructions or proper maintenance may void warranty.

ROAD TESTING:

1. Start the engine with the transmission in neutral or park, and the parking brake engaged. Listen for air leaks or odd noises. For air leaks secure hoses and connections. For odd noises, find cause and repair before proceeding. This kit will function identically to the factory system except for being louder and much more responsive.

2. Test drive the vehicle. Listen for odd noises or rattles and fix as necessary.

3. If road test is fine, you can now enjoy the added power and performance from your kit.

4. K&N Engineering, Inc., suggests checking the air filter element periodically for excessive dirt build-up. When the element becomes covered in dirt (or once a year), service it according to the instructions on the Recharger® service kit, part number 99-5050 or 99-5000.

INTAKE SYSTEMS FOR VEHICLES LISTED ARE 50 STATE LEGAL. SEE KNFILTERS.COM FOR CARB STATUS ON EACH PART FOR A SPECIFIC VEHICLE.