

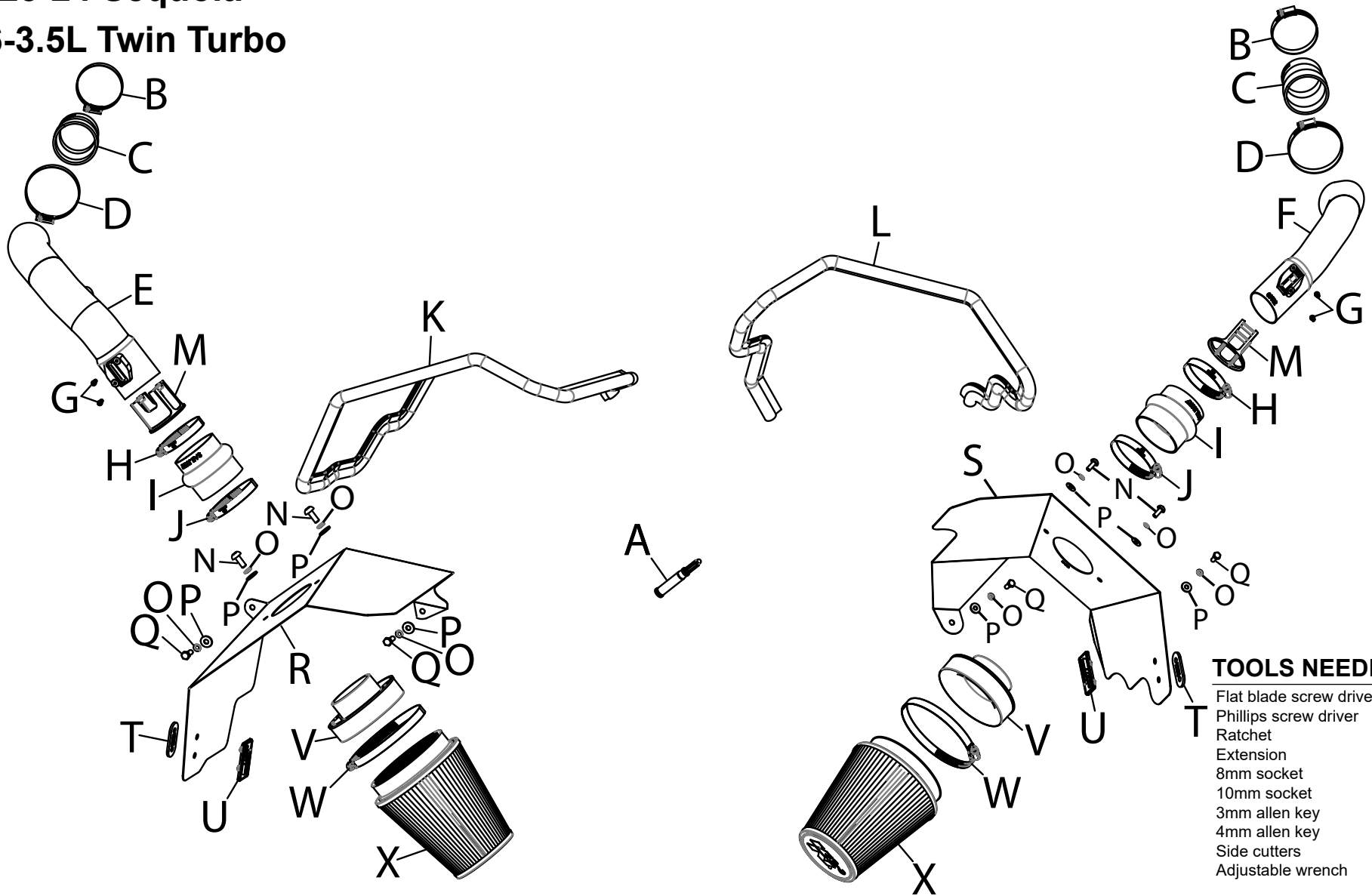


NOT LEGAL FOR SALE OR USE ON ANY POLLUTION CONTROLLED MOTOR VEHICLE IN CALIFORNIA OR STATES ADOPTING CALIFORNIA EMISSION PROCEDURES.

See knfilters.com for CARB status on each part for a specific vehicle

INSTALLATION INSTRUCTIONS

77-9042KP
TOYOTA
2022-24 Tundra
2023-24 Sequoia
V6-3.5L Twin Turbo



TOOLS NEEDED:

- Flat blade screw driver
- Phillips screw driver
- Ratchet
- Extension
- 8mm socket
- 10mm socket
- 3mm allen key
- 4mm allen key
- Side cutters
- Adjustable wrench

PARTS LIST:

Description	Qty.	Part #	Description	Qty.	Part #	Description	Qty.	Part #
A SUPER GLUE	1	409	I HOSE; HUMP 3" TO 2.75"L	2	08421	Q BOLT; M6-1 X 16MM HEX	4	07812
B HOSE CLAMP; #36	2	08530	J HOSE CLAMP; #48	2	08601	R HEAT SHIELD; PASSENGER	1	074563
C HOSE; 2.25"ID TO 2.5"ID	2	08638	K EDGE TRIM; 66"L	1	102472	S HEAT SHIELD; DRIVER	1	074562
D HOSE CLAMP; #40	2	08554	L EDGE TRIM; 61"L	1	102492	T PLATE; LOCKING K&N BADGE	2	010151
E TUBE; 3.5"OD TO 2.75"OD	1	25900P	M MAF INSERT; 2.59"OD	2	9-21070	U BADGE; PLASTIC SNAP-IN	2	088096
F TUBE; 2.5"OD TO 2.75"OD	1	25901P	N BOLT; M6 X 1 X 16MM BTNHD	4	07730	V ADAPTER; 3"OD HOSE	2	21569
G BOLT; M4-.7 X 8MM ALNHD	4	07733	O WASHER; M6, SPLIT LOCK	8	1-3025	W HOSE CLAMP; #88	2	KITHS88
H HOSE CLAMP; #44	2	08577	P WASHER; 6MM FLAT	8	08269	X AIR FILTER	2	RU-2800

If you need any assistance please call 1-800-858-3333 to speak with a representative in our Customer Service Center before returning the product.

NOTE: FAILURE TO FOLLOW INSTALLATION INSTRUCTIONS AND NOT USING THE PROVIDED HARDWARE MAY DAMAGE THE INTAKE TUBE, THROTTLE BODY AND ENGINE.

TO START:

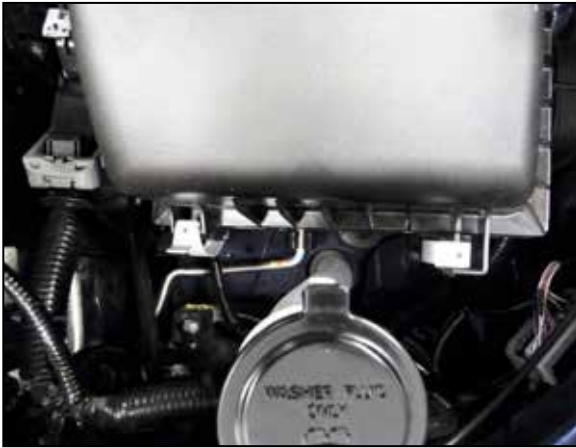
1. Turn off the ignition and disconnect the negative battery cable.
NOTE: Disconnecting the negative battery cable erases pre-programmed electronic memories. Write down all memory settings before disconnecting the negative battery cable. Some radios will require an anti-theft code to be entered after the battery is reconnected. The anti-theft code is typically supplied with your owner's manual. In the event your vehicles anti-theft code cannot be recovered, contact an authorized dealership to obtain your vehicles anti-theft code.



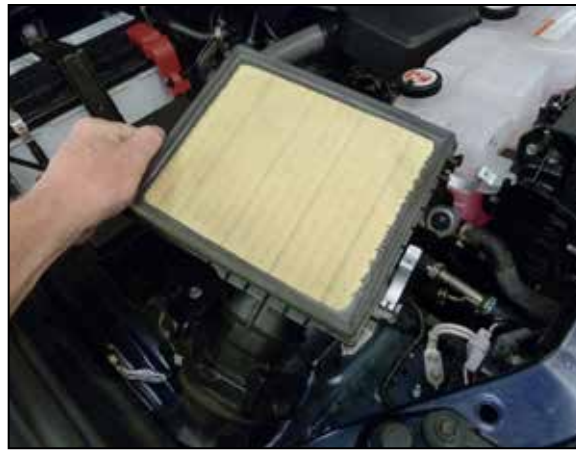
2. Disconnect the passenger and driver side mass air sensor electrical connection and unhook the harness's mounting clips.



3. Release the retaining clips that secure the upper air filter housings.



4. Loosen the hose clamps that secure the factory upper intake tubes and then remove the upper housings and intake tubes.



5. Disconnect the PCV hose from the passenger side lower intake tube, Remove the intake tube mounting bolt then loosen the hose clamp securing the intake tube to the turbo inlet and remove the tube from the vehicle.



6. Disconnect the PCV hose from the driver side lower intake tube, Remove the intake tube mounting bolt then loosen the hose clamp securing the intake tube to the turbo inlet and remove the tube from the vehicle.



7. Remove the bolt that secures the driver side intake tube mounting bracket and then remove the bracket from the vehicle.



8. Remove the three air filter housing mounting studs from both the left and right sides.



9. Install the provided couplers onto the turbo inlets and secure with the provided hose clamps.



10. Install the filter adapters and K&N badges onto the heat shields using the provided hardware.



11. Cut the 61\"/>



12. Cut the 66" L edge trim to lengths of 12" and 49.75", install the edge trim onto the driver side heat shield as shown.



13. Install the driver side heat shield assembly and secure with the provided hardware.



14. Install the passenger side heat shield assembly and secure with the provided hardware.



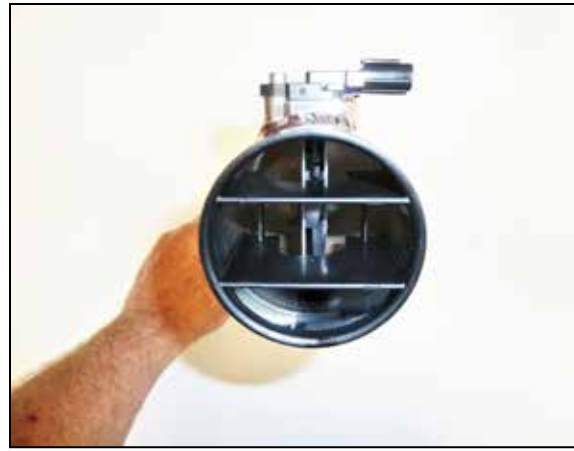
15. Install the provided hump couplers onto the filter adapters and secure with the provided hose clamp.



16. Remove the mass air sensors from the factory housings and install them into the K&N intake tubes using the provided hardware.



17. Apply four drops of the provided super glue to the air straighteners as shown.



18. Install the air straighteners into the K&N intake tubes so that the blades are aligned as shown in relation to the mass air sensor.



19. Install the driver side intake tube into the couplers, adjust the tube for best fit and then secure with the provided hose clamps.



20. Install the passenger side intake tube into the couplers, adjust the tube for best fit and then secure with the provided hose clamps.



21. Connect the driver side PCV hose to the fitting installed into the intake tube and secure with the factory spring clamp.



22. Connect the passenger side PCV hose to the fitting installed into the intake tube and secure with the factory spring clamp.



23. Reconnect the mass air sensor electrical connections.



24. Install the K&N air filters onto the filter adapters and secure with the provided hose clamp.



25. Reconnect the vehicle's negative battery cable. Double check to make sure everything is tight and properly positioned before starting the vehicle.

26. It will be necessary for all K&N® high flow intake systems to be checked periodically for realignment, clearance and tightening of all connections. Failure to follow the above instructions or proper maintenance may void warranty.

ROAD TESTING:

1. Start the engine with the transmission in neutral or park, and the parking brake engaged. Listen for air leaks or odd noises. For air leaks secure hoses and connections. For odd noises, find cause and repair before proceeding. This kit will function identically to the factory system except for being louder and much more responsive.

2. Test drive the vehicle. Listen for odd noises or rattles and fix as necessary.

3. If road test is fine, you can now enjoy the added power and performance from your kit.

4. K&N Engineering, Inc., requires cleaning the intake system's air filter element every 100,000 miles. When used in dusty or off-road environments, our filters will require cleaning more often. We recommend that you visually inspect your filter once every 25,000 miles to determine if the screen is still visible. When the screen is no longer visible some place on the filter element, it is time to clean it. To clean and re-oil, purchase our filter Recharger® service kit, part number 99-5050 or 99-5000 and follow the easy instructions.

NOT LEGAL FOR SALE OR USE ON ANY POLLUTION CONTROLLED MOTOR VEHICLE IN CALIFORNIA OR STATES ADOPTING CALIFORNIA EMISSION PROCEDURES.

See knfilters.com for CARB status on each part for a specific vehicle